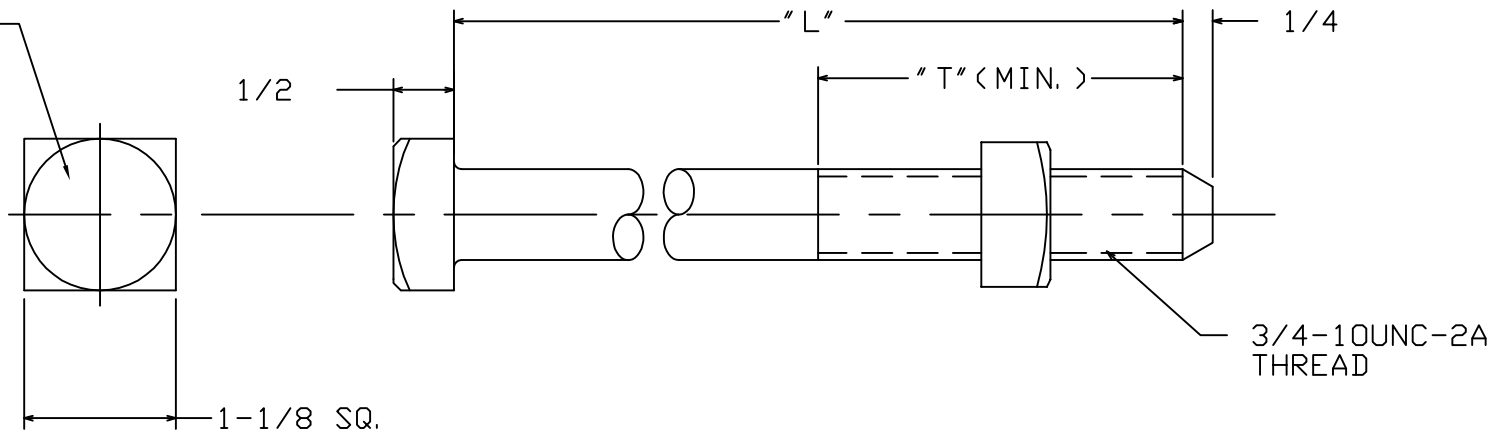


MANUFACTURER'S IDENTIFICATION



CATALOG NUMBER	"L"	"T"
PS8902	2	1.75
PS8903	3	1.75
PS8906	6	4
PS8907	7	4
8908	8	4
8910	10	6
8912	12	6
8914	14	6
8916	16	6
8918	18	6
8920	20	6
8922	22	6
8924	24	6
8926	26	6
8928	28	6
8930	30	8
8932	32	8
PS8934	34	8
PS8936	36	8

==NOTES==

1. MATERIAL: STEEL, HOT DIP GALVANIZE PER ASTM A153 (LATEST REV).
2. BOLT AND NUT ASSEMBLY MEETS THE ANSI MINIMUM TENSILE LOAD OF 18,350 LBS AND THE 180° BEND TEST.

CHANCE TOLERANCE CHART EC 29088		HUBBELL POWER SYSTEMS	
<small>CONFIDENTIAL: THIS DRAWING AND ITS CONTENTS ARE CONFIDENTIAL AND THE EXCLUSIVE PROPERTY OF HUBBELL POWER SYSTEMS. NO PUBLICATION, DISTRIBUTION OR COPIES MAY BE MADE WITHOUT THE WRITTEN CONSENT OF HUBBELL POWER SYSTEMS. HUBBELL POWER SYSTEMS UNPUBLISHED ALL RIGHTS RESERVED UNDER THE COPYRIGHT LAWS.</small>		TITLE 3/4 MACHINE OR CROSSARM BOLT	
SIZE SB SA8908	DWG NO. SA8908	CAT / PART / ASSY NO. SEE CHART	REV C
DO NOT SCALE THIS DRAWING	DRN BY MCF	DATE 01/19/15	SHEET 01 OF 01