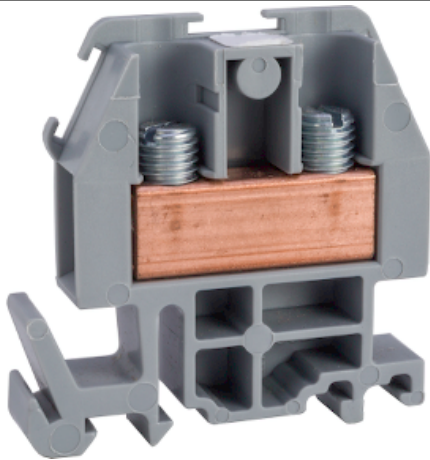


Product availability : Stock - Normally stocked in distribution facility



Price* : 2.40 USD



Main

| | |
|---------------------------|-------------------------|
| Range of product | 9080G |
| Product or component type | Terminal block |
| Product or component type | Terminal block standard |
| Color | Grey |
| Quantity per set | Set of 50 |

Complementary

| | |
|---------------------------------------|---|
| System Voltage | 600 V AC/DC |
| [In] rated current | 60 A per: UL 60 A per: CSA |
| AWG gauge | AWG 22...AWG 8 (copper) |
| Mounting support | 35 mm DIN rail 9080GH track |
| Product certifications | CSA file 62144 class 6228 01 UL recognized E60616 CCN XCFR2 CE |
| Protection type | Fingersafe per: DIN 57470 |
| Electrical connection | Box lugs copper |
| Material | Nylon block |
| Ambient air temperature for operation | -40...257 °F |
| Connections - terminals | Lug copper Tightening Torque: 18...20 lbf.in for: AWG 22...AWG 8 (copper) |
| Height | 1.82 in |
| Width | 1.72 in |
| Depth | 0.35 in |
| Number of terminal blocks | 34 per foot |
| Product compatibility | GM6B |

Ordering and shipping details

| | |
|-----------------------|--------------------------|
| Category | 21702 - 9080 G (NOT GCB) |
| Discount Schedule | CP5 |
| GTIN | 00785901917472 |
| Nbr. of units in pkg. | 50 |
| Package weight(Lbs) | 2.9999999999999999E-2 |
| Returnability | Y |
| Country of origin | MX |

Offer Sustainability

| | |
|------------------------|---|
| RoHS (date code: YYWW) | Compliant - since 0846 - Schneider Electric declaration of conformity Schneider Electric declaration of conformity |
|------------------------|---|

Contractual warranty

| | |
|-----------------|-----------|
| Warranty period | 18 months |
|-----------------|-----------|