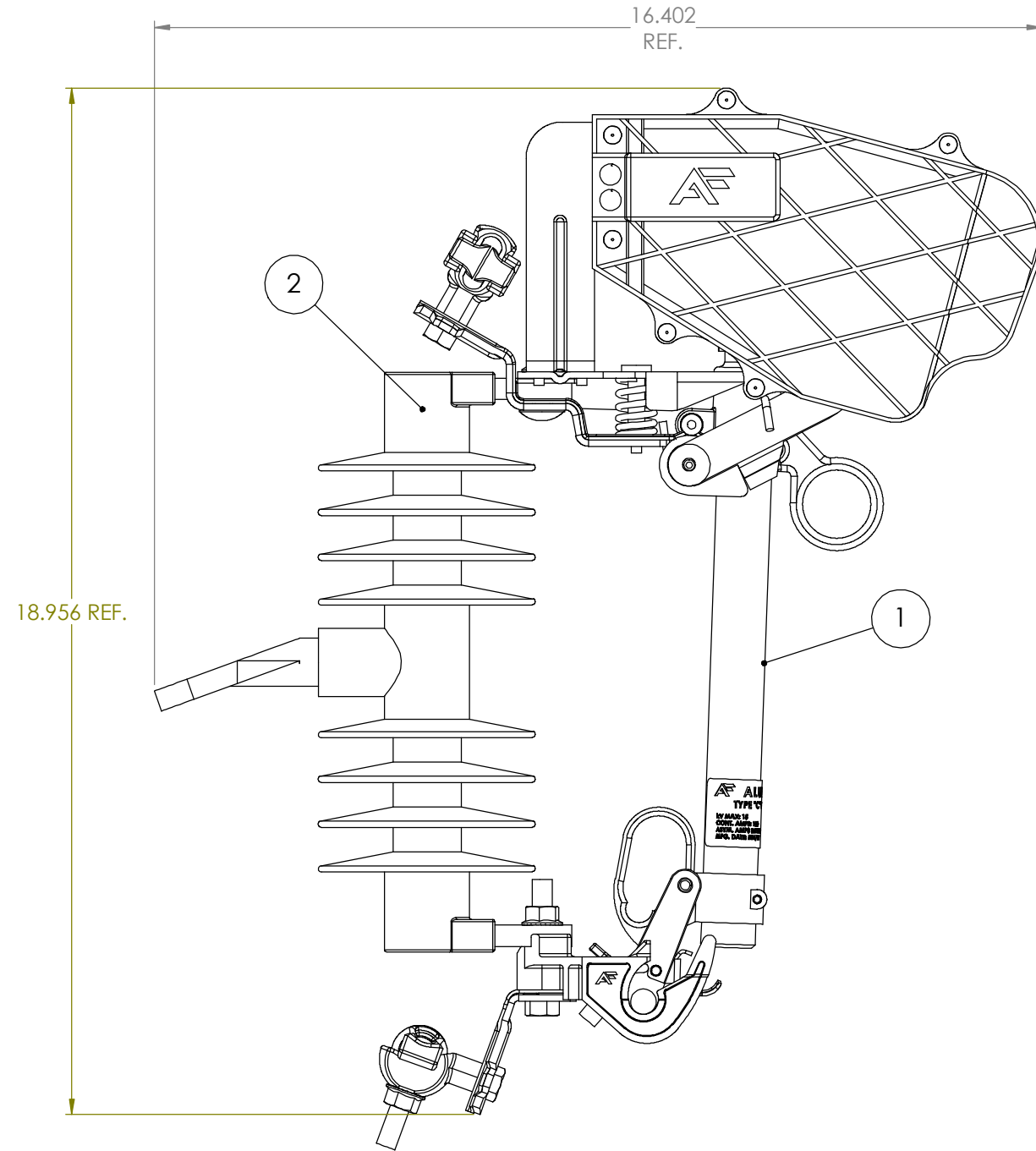


DUPLICATION, DISTRIBUTION OR ALTERATION OF THIS DOCUMENT BY ANY MEANS, IN WHOLE OR IN PART, IS STRICTLY FORBIDDEN. ALL INFORMATION HEREIN DISCLOSED, WHETHER PATENTABLE OR OTHERWISE, IS THE CONFIDENTIAL, PROPRIETARY AND INTELLECTUAL PROPERTY OF ALUMA-FORM, INC. ANY USE OR PUBLICATION OF THIS DOCUMENT OR CONTAINED INFORMATION, WITHOUT FIRST OBTAINING EXPLICIT WRITTEN AUTHORIZATION FROM ALUMA-FORM, INC., IS ABSOLUTELY FORBIDDEN.

- NOTES:
- MUST COMPLY WITH IEEE STANDARDS C37.41 AND C37.42 (LATEST REVISIONS)
 - SHALL COMPLY WITH AF STANDARD 90325



ITEM NO.	PART NUMBER	DESCRIPTION	58076-01	58076-02	58076-03	58076-04	58076-05	58076-06	58076-07	58076-08	58076-09	58076-10	58076-11	58076-12
-	18139	BOLT PACK, NEMA B BRACKET	-	1	-	-	1	-	-	1	-	-	1	-
-	18145	BOLT PACK, EXTENDED "L" BRACKET	-	-	1	-	-	1	-	-	1	-	-	1
1	25170-01	FUSE HOLDER, 15kV/100A 16KA-B, LX	1	1	1	1	1	1	1	1	1	1	1	1
2	42974-01	CSG15LX-E, SUBASSEMBLY	1	1	1	-	-	-	-	-	-	-	-	-
	42974-03	CSS15LX-E, SUBASSEMBLY	-	-	-	1	1	1	-	-	-	-	-	-
	42974-02	CSG15LX-S, SUBASSEMBLY	-	-	-	-	-	-	1	1	1	-	-	-
	42974-04	CSS15LX-S, SUBASSEMBLY	-	-	-	-	-	-	-	-	-	1	1	1

PART NUMBER	DESCRIPTION	WEIGHT
58076-01	CSG15LX-100A-110-EN-16KA-HFJ	10.39
58076-02	CSG15LX-100A-110-EB-16KA-HFJ	13.71
58076-03	CSG15LX-100A-110-EX-16KA-HFJ	14.25
58076-04	CSS15LX-100A-110-EN-16KA-HFJ	10.40
58076-05	CSS15LX-100A-110-EB-16KA-HFJ	13.72
58076-06	CSS15LX-100A-110-EX-16KA-HFJ	14.27
58076-07	CSG15LX-100A-110-SN-16KA-HFJ	10.31
58076-08	CSG15LX-100A-110-SB-16KA-HFJ	13.63
58076-09	CSG15LX-100A-110-SX-16KA-HFJ	14.18
58076-10	CSS15LX-100A-110-SN-16KA-HFJ	10.25
58076-11	CSS15LX-100A-110-SB-16KA-HFJ	13.57
58076-12	CSS15LX-100A-110-SX-16KA-HFJ	14.11

UNLESS OTHERWISE SPECIFIED, STANDARD ALUMA-FORM, INC. MANUFACTURING TOLERANCES APPLY

CHANGE / REVISION DESCRIPTION	JOB NUMBER	ALUMA-FORM, Inc.	SCALE	DESCRIPTION	CS_15LX-100A-110-E/S_-16K-HFJ							
	5957	3625 OLD GETWELL ROAD MEMPHIS, TN 38118-6072 U.S.A.	1:3									
	REVISION		PROJECT CODE	HFJ	MATERIAL							
			WEIGHT	SEE TABLE	SECTION							
	DRAWING NUMBER		DRH	5898	31-MAR-17							
	58076		DRAWN BY	RELEASE E.A.	RELEASE DATE	REVISED BY	REVISED E. A.	REVISED DATE	REVIEWED	APPROVED	58076	-
											DRAWING NUMBER	REVISION