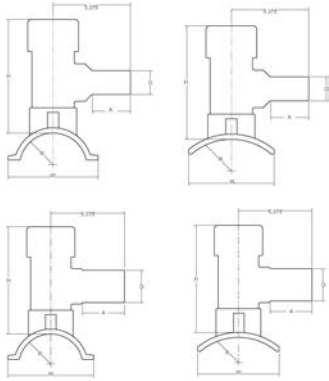


High Volume Tapping Tee with Stainless Steel Cutter



ELECTROFUSION HIGH VOLUME TAPPING TEE with STAINLESS STEEL CUTTER PE3408/PE4710, B-Under Clamp Outlet Size: 2" IPS, DR11

- Pin Type: 4.7R (4.7 Pin with Resistor)
 - Cutter Size Material: 1.5/Stainless Steel
 - Approval: ASTM D2513
 - Approval: ASTM F1055
 - Approval: ASTM D3261
 - Approval: AWWA C906
 - Approval: NSF-61
- Please call for more information on availability, pricing, other sizes and dimensions.

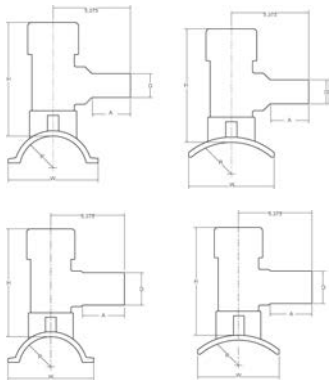


Main Size (inch)	GFCP Part No.	GF weight Part No.	(lb)	A (inch)	W (inch)	H (inch)	D (inch)	Box Qty
2 IPS (BF)	10004598	360 001 005	3.131	3.00	3.59	6.65	2.60	10
2 IPS	10012182	360 021 286	3.505	3.00	3.59	6.65	2.60	10



ELECTROFUSION HIGH VOLUME TAPPING TEE with STAINLESS STEEL CUTTER PE3408/PE4710 Outlet Size: 2" IPS, DR11

- Pin Type: 4.7R (4.7 Pin with Resistor)
 - Cutter Size Material: 1.8/Stainless Steel
 - Approval: ASTM D2513
 - Approval: ASTM F1055
 - Approval: ASTM D3261
 - Approval: AWWA C906
 - Approval: NSF-61
- Please call for more information on availability, pricing, other sizes and dimensions. The products listed are standard stocking options. However, GF Central Plastics offers thousands of different configurations as well as custom innovative structures.



Main Size (inch)	GFCP Part No.	GF weight Part No.	(lb)
3 IPS (BF)	10004613	360 001 015	2.866
3 IPS	10012183	360 021 296	3.175
4 IPS (BF)	10004610	360 001 025	3.020
4 IPS/DIPS (BF)	10006024	360 001 032	3.020
4 IPS	10012184	360 021 307	3.748
6 IPS/DIPS (BF)	10004622	360 001 043	3.792
6 IPS	10012185	360 021 320	3.527
8 IPS (BF)	10007720	360 001 050	2.756
8 IPS	10012186	360 021 334	2.954
10 IPS	10012187	360 021 264	2.910
12 IPS	10012188	360 021 275	28.506

Clamp Type	A (inch)	W (inch)	H (inch)	D (inch)	Box Qty
C-Under Clamp	3.00	3.59	6.65	2.60	10
C-Under Clamp	3.00	3.59	6.65	2.60	10
D-Under Clamp	3.00	4.60	6.66	2.60	8
D-Under Clamp	3.00	4.60	6.66	2.60	8
D-Under Clamp	3.00	4.60	6.66	2.60	8
E-Under Clamp	3.00	8.68	8.43	2.60	5
E-Under Clamp	3.00	8.68	8.43	2.60	5

table continued on the next page

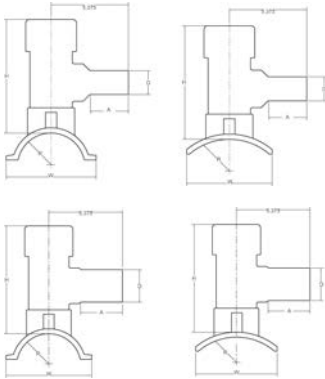
Clamp Type	A (inch)	W (inch)	H (inch)	D (inch)	Box Qty
E-Top Load	2.68	5.92	7.88	1.60	8
E-Top Load	2.68	5.92	7.88	1.60	8
E-Top Load	3.00	6.10	7.88	1.60	8
E-Top Load	3.00	6.10	7.88	1.60	8



**ELECTROFUSION HIGH VOLUME TAPPING TEE with STAINLESS STEEL CUTTER
PE3408/PE4710, H-Top Load
Outlet Size: 2" IPS, DR11**

- Pin Type: 4.7S (4.7 Solid Pin)
- Cutter Size Material: 1.8/Stainless Steel
- Approval: ASTM D2513
- Approval: ASTM F1055
- Approval: ASTM D3261
- Approval: AWWA C906
- Approval: NSF-61

Please call for more information on availability, pricing, other sizes and dimensions.



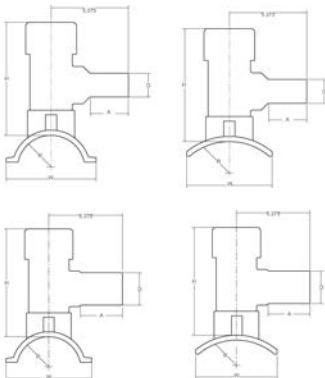
Main Size (inch)	GFCP Part No.	GF weight Part No.	(lb)	A (inch)	W (inch)	H (inch)	D (inch)	Box Qty
8 DIPS (SF)	10004582	360 021 323	1.830	3.00	5.92	7.88	2.60	15
8 DIPS (BF)	10004616	360 001 045	4.101	3.00	5.92	7.88	2.60	30
8 IPS (BF)	10007505	360 001 053	2.756	3.00	5.92	7.88	2.60	8
10 IPS (BF)	10014208	360 029 065	6.151	3.00	6.10	7.88	2.60	8
12 IPS (BF)	10003561	360 000 995	3.153	3.00	6.10	7.88	2.60	8
12 DIPS (BF)	10012489	360 021 270	6.151	3.00	6.10	7.88	2.60	8



**ELECTROFUSION HIGH VOLUME TAPPING TEE with STAINLESS STEEL CUTTER
PE3408/PE4710, H-Top Load
Outlet Size: 1.25" IPS (BF), DR10/11**

- Pin Type: 4.7S (4.7 Solid Pin)
- Cutter Size Material: 1.8/Stainless Steel
- Approval: ASTM D2513
- Approval: ASTM F1055
- Approval: ASTM D3261

Please call for more information on availability, pricing, other sizes and dimensions.



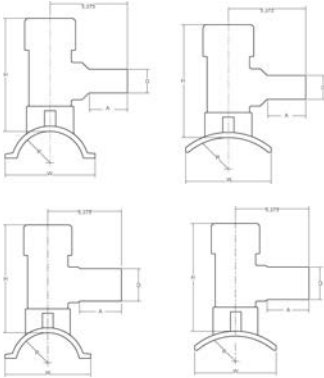
Main Size (inch)	GFCP Part No.	GF weight Part No.	(lb)	A (inch)	W (inch)	H (inch)	D (inch)	Box Qty
12	10009314	360 000 991	3.351	2.68	6.10	7.88	1.66	8



ELECTROFUSION HIGH VOLUME TAPPING TEE with STAINLESS STEEL CUTTER
PE3408/PE4710, H-Top Load
Outlet Size: 1.25" IPS (BF), DR11

- Pin Type: 4.7S (4.7 Solid Pin)
- Cutter Size Material: 1.5/Stainless Steel
- Approval: ASTM D2513
- Approval: ASTM F1055
- Approval: ASTM D3261
- Approval: AWWA C906
- Approval: NSF-61

Please call for more information on availability, pricing, other sizes and dimensions.



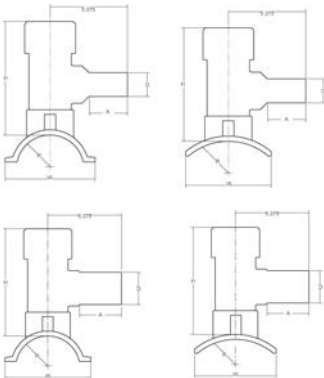
Main Size (inch)	GFCP Part No.	GF weight Part No.	(lb)	A (inch)	W (inch)	H (inch)	D (inch)	Box Qty
8	10004614	360 001 044	4.101	2.68	6.10	7.88	1.66	8



ELECTROFUSION HIGH VOLUME TAPPING TEE with STAINLESS STEEL CUTTER
PE3408/PE4710
Outlet Size: 1.25" IPS (BF), DR11

- Pin Type: 4.7R (4.7 Pin with Resistor)
- Cutter Size Material: 1.5/Stainless Steel
- Approval: ASTM D2513
- Approval: ASTM F1055
- Approval: ASTM D3261
- Approval: AWWA C906
- Approval: NSF-61

Please call for more information on availability, pricing, other sizes and dimensions. The products listed are standard stocking options. However, GF Central Plastics offers thousands of different configurations as well as custom innovative structures.



Main Size (inch)	GFCP Part No.	GF weight Part No.	(lb)	Clamp Type	A (inch)	W (inch)	H (inch)	D (inch)	Box Qty
2	10004594	360 001 002	3.351	Under Clamp (B)	2.68	3.59	6.65	1.60	10
3	10004604	360 001 011	3.307	Under Clamp (C)	2.68	4.60	6.66	1.66	10
4	10004611	360 001 031	3.527	Under Clamp (D)	2.68	6.26	7.27	1.66	8
6	10004617	360 001 041	3.748	Under Clamp (E)	2.68	8.68	8.43	1.66	5
8	10007719	360 001 050	2.756	Top Load (E)	2.68	6.10	7.88	1.60	8

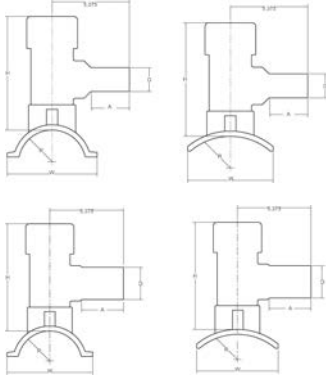
High Volume Tapping Tee



ELECTROFUSION HIGH VOLUME TAPPING TEE with STEEL CUTTER PE3408/PE4710 Outlet Size: 2" IPS

- Pin Type: 4.7R (4.7 Pin with Resistor)
- Cutter Size Material: 1.8/Steel
- Approval: ASTM D2513
- Approval: ASTM F1055
- Approval: ASTM D3261

Please call for more information on availability, pricing, other sizes and dimensions.



Main Size (inch)	SDR	GF Part No.	GF Part No.	GF weight (lb)
3	11	10009495	360 003 443	3.439
3	9	10009664	360 003 469	2.910
3	11	10009718	360 003 126	3.439
3	9	10009722	360 003 749	3.439
3	11	10012511	360 021 291	0.002
4	11	10009497	360 003 446	2.624
4	9	10009668	360 003 471	2.624
4	11	10009724	360 003 127	2.624
4	9	10009727	360 003 750	2.624
4	11	10012512	360 021 302	3.682
6	11	10009499	360 003 447	3.263
6	9	10009672	360 003 473	3.814
6	11	10009730	360 003 128	3.461
6	9	10009734	360 003 751	3.814
6	11	10011777	360 021 314	0.002
6	11	10012513	360 021 313	3.968
8	11	10009501	360 003 448	2.998
8	9	10009676	360 003 475	2.910
8	11	10009695	360 003 480	2.756
8	11	10011190	360 021 332	3.461
8	11	10011778	360 021 331	0.002
8	11	10012514	360 021 330	3.395

Clamp Type	A (inch)	W (inch)	H (inch)	D (inch)	Box Qty
Under Clamp (C)	3.00	4.60	6.66	2.60	10
Under Clamp (C)	3.00	4.60	6.66	2.60	10
Underpart	3.00	4.60	6.66	2.60	10
Underpart	3.00	4.60	6.66	2.60	10
Underpart	3.00	4.60	6.66	2.60	10
Under Clamp (D)	3.00	6.26	7.27	2.60	8
Under Clamp (D)	3.00	6.26	7.27	2.60	8
Underpart	3.00	6.26	7.27	2.60	7
Underpart	3.00	6.26	7.27	2.60	8
Underpart	3.00	6.26	7.27	2.60	10
Under Clamp (E)	3.00	8.68	8.43	2.60	5
Under Clamp (E)	3.00	8.68	8.43	2.60	5
Underpart	3.00	8.68	8.43	2.60	5
Underpart	3.00	8.68	8.43	2.60	5
Underpart	3.00	8.68	8.43	2.60	5
Underpart	3.00	8.68	8.43	2.60	10
Top Load (E)	3.00	5.92	7.88	2.60	8
Top Load (E)	3.00	5.92	7.88	2.60	8

table continued on the next page

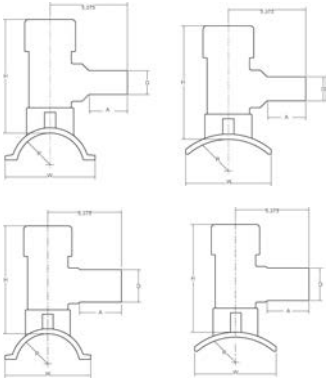
Clamp Type	A (inch)	W (inch)	H (inch)	D (inch)	Box Qty
Top Load (E)	3.00	5.92	7.88	2.60	5
Top Load (E)	3.00	5.92	7.88	2.60	8
Top Load (E)	3.00	5.92	7.88	2.60	5
Top Load (E)	3.00	5.92	7.88	2.60	10



ELECTROFUSION HIGH VOLUME TAPPING TEE with STEEL CUTTER
PE3408/PE4710
Outlet Size: 2" IPS

- Pin Type: 4.7R (4.7 Pin with Resistor)
- Cutter Size Material: 1.5/Steel
- Approval: ASTM D2513
- Approval: ASTM F1055
- Approval: ASTM D3261

Please call for more information on availability, pricing, other sizes and dimensions.



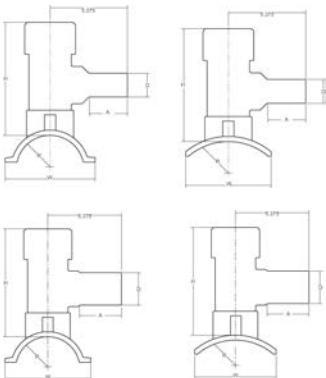
SDR	GFCP Part No.	GF Part No.	weight (lb)	Clamp Type	A (inch)	W (inch)	H (inch)	D (inch)	Box Qty
11	10003537	360 001 006	1.830	Under Clamp (B)	3.00	6.59	6.65	2.60	10
9	10006644	360 001 009	2.756	Under Clamp (B)	3.00	6.59	6.65	2.60	10
11	10010493	360 003 748	2.910	Underpart	3.00	6.59	6.65	2.60	10
11	10012510	360 021 281	3.329	Underpart	3.00	6.59	6.65	2.60	10



ELECTROFUSION HIGH VOLUME TAPPING TEE with STEEL CUTTER
PE3408/PE4710, DR11
Outlet Size: 1 1/4" IPS

- Pin Type: 4.7R (4.7 Pin with Resistor)
- Cutter Size Material: 1.5/Steel
- Approval: ASTM D2513
- Approval: ASTM F1055
- Approval: ASTM D3261

Please call for more information on availability, pricing, other sizes and dimensions. The products listed are standard stocking options. However, GF Central Plastics offers thousands of different configurations as well as custom innovative structures.



Main Size (inch)	GFCP Part No.	GF Part No.	weight (lb)	Clamp Type	A (inch)	B (inch)	H (inch)	D (inch)	Box Qty
2	10004588	360 001 003	1.830	Under Clamp (B)	2.68	3.59	6.65	1.66	10
6	10004618	360 001 034	3.263	Under Clamp (E)	2.68	3.59	6.65	1.66	5
2	10010492	360 003 743	2.888	Underpart	2.68	8.68	8.43	1.66	10



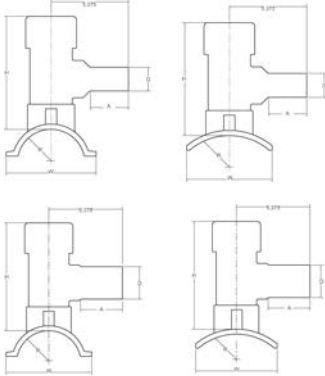
ELECTROFUSION HIGH VOLUME TAPPING TEE with STEEL CUTTER

PE3408/PE4710, DR11

Outlet Size: 1 1/4" IPS (BF)

- Pin Type: 4.7R (4.7 Pin with Resistor)
- Cutter Size Material: 1.8/Steel
- Approval: ASTM D2513
- Approval: ASTM F1055
- Approval: ASTM D3261

Please call for more information on availability, pricing, other sizes and dimensions.



Main Size (inch)	GFCP Part No.	GF Part No.	weight (lb)
3	10009662	360 003 468	2.910
3	10009717	360 003 744	3.351
4	10009666	360 003 470	3.042
4	10009723	360 003 745	3.461
6	10009670	360 003 472	3.241
6	10009729	360 003 746	3.417
8	10009674	360 003 474	2.998

Clamp Type	A (inch)	W (inch)	H (inch)	D (inch)	B (inch)	Box Qty
Under Clamp (C)	2.68	1.60	6.66	1.66		10
Underpart	2.68	1.60	6.66	1.66		8
Under Clamp (D)	2.68	6.26	7.27	1.66		8
Underpart	2.68	6.26	7.27	1.66		8
Under Clamp (E)	2.68	8.68	8.43	1.66		5
Underpart	2.68	8.68	8.43	1.66		5
Top Load (E)	2.68	6.10	7.88	1.66		8



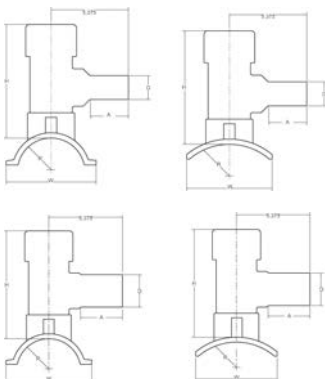
ELECTROFUSION HIGH VOLUME TAPPING TEE

PE2406/PE2708, DR11

Outlet Size: 2" IPS (BF)

- Pin Type: 4.7R (4.7 Pin with Resistor)
- Cutter Size Material: 1.8/Steel
- Approval: ASTM D2513
- Approval: ASTM F1055
- Approval: ASTM D3261
- *Approval: CSA B137.4.1

Please call for more information on availability, pricing, other sizes and dimensions. The products listed are standard stocking options. However, GF Central Plastics offers thousands of different configurations as well as custom innovative structures.



<...>	Main Size (inch)	Part No.	Part No.	weight (lb)
*	3	10009496	360 003 444	2.888
	3	10009688	360 021 293	3.880
	3	10009719	360 004 343	3.020
	3	10009720	360 021 295	3.880
*	4	10009498	360 002 881	3.020
	4	10009690	360 021 304	4.012
	4	10009725	360 004 344	3.616
	4	10009728	360 021 306	4.012
*	6	10009500	360 001 039	2.822
	6	10009731	360 004 345	3.836
*	6	10009754	360 021 316	3.990
	6	10012294	360 021 319	4.079
*	8	10009502	360 003 450	3.527
*	8	10009696	360 021 333	3.880

table continued on the next page

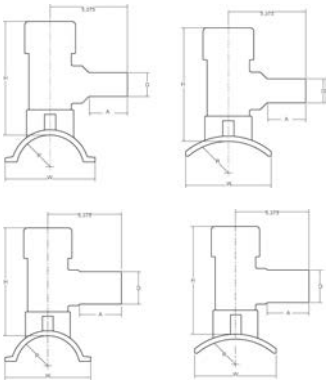
Clamp Type	A (inch)	W (inch)	H (inch)	D (inch)	Box Qty
Under Clamp (C)	3.00	4.60	6.66	2.60	10
Underpart	3.00	4.60	6.66	2.60	10
Underpart	3.00	4.60	6.66	2.60	7
Underpart	3.00	4.60	6.66	2.60	10
Under Clamp (D)	3.00	6.26	7.27	2.60	8
Underpart	3.00	6.26	7.27	2.60	10
Underpart	3.00	6.26	7.27	2.60	7
Underpart	3.00	6.26	7.27	2.60	10
Under Clamp (E)	3.00	8.68	8.43	2.60	5
Underpart	3.00	8.68	8.43	2.60	5
Under Clamp (E)	3.00	8.68	8.43	2.60	8
Underpart	3.00	8.68	8.43	2.60	5
Top Load (E)	3.00	5.92	7.88	2.60	8
Top Load (E)	3.00	5.92	7.88	2.60	5



ELECTROFUSION HIGH VOLUME TAPPING TEE
PE2406/PE2708, DR11
Outlet Size: 2" IPS (BF), Common Dimensions: A: 3.00", D: 2.60"

- Pin Type: 4.7R (4.7 Pin with Resistor)
- Cutter Size Material: 1.5/Steel
- Approval: ASTM D2513
- Approval: ASTM F1055
- Approval: ASTM D3261
- *Approval: CSA B137.4

Please call for more information on availability, pricing, other sizes and dimensions. The products listed are standard stocking options. However, GF Central Plastics offers thousands of different configurations as well as custom innovative structures.



<...>	Main Size (inch)	GFCP Part No.	GF weight Part No.	(lb)	Clamp Type	W (inch)	H (inch)	Box Qty
	2	10010496	360 004 342	2.888	Underpart	3.59	6.65	10
	2	10012293	360 021 285	3.748	Underpart	3.59	6.65	10
	2	5757081	360 021 284	3.704	Under Clamp (B)	3.59	6.65	10
*	2	5757114	360 001 007	2.778	Under Clamp (B)	3.59	6.65	10
*	6	5757119	360 001 036	4.079	Under Clamp (E)	8.68	8.43	5
*	8	5757121	360 001 054	2.910	Top Load (E)	5.92	7.88	8



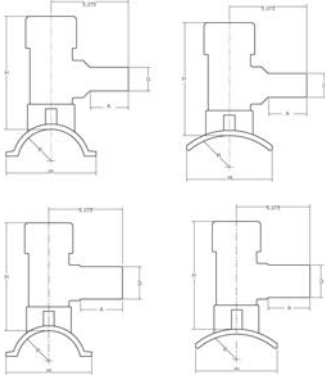
ELECTROFUSION HIGH VOLUME TAPPING TEE

PE2406/PE2708, DR10/11

Outlet Size: 1 1/4" IPS (BF), Common Dimensions: A: 2.68", D: 1.66"

- Pin Type: 4.7R (4.7 Pin with Resistor)
- Cutter Size Material: 1.8/Steel
- Approval: ASTM D2513
- Approval: ASTM F1055
- Approval: ASTM D3261

Please call for more information on availability, pricing, other sizes and dimensions.



Main Size (inch)	GFCP Part No.	GF Part No.	weight (lb)	Clamp Type	W (inch)	H (inch)	Box Qty
3	10009661	360 021 289	3.307	Under Clamp (C)	4.60	6.66	10
3	10010968	360 021 288	3.395	Under Clamp (C)	4.60	6.66	10
4	10009665	360 021 300	3.042	Under Clamp (D)	6.26	7.27	7
4	10010969	360 021 299	3.219	Under Clamp (D)	6.26	7.27	10
6	10009669	360 021 311	3.241	Under Clamp (E)	8.68	8.43	5
6	10010970	360 021 310	3.483	Under Clamp (E)	8.68	8.43	5
8	10009673	360 021 326	3.439	Top Load (E)	6.10	7.88	10
8	10009892	360 021 327	3.439	Top Load (E)	6.10	7.88	10
8	10010109	360 021 324	3.439	Top Load (E)	6.10	7.88	10
8	10010971	360 021 325	3.175	Top Load (E)	6.10	7.88	5



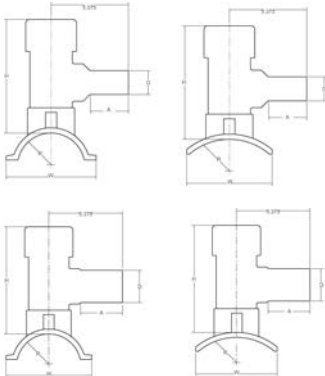
ELECTROFUSION HIGH VOLUME TAPPING TEE

PE2406/PE2708, DR10/11

Outlet Size: 1 1/4" IPS (BF)

- Pin Type: 4.7R (4.7 Pin with Resistor)
- Cutter Size Material: 1.5/Steel
- Approval: ASTM D2513
- Approval: ASTM F1055
- Approval: ASTM D3261
- *Approval: CSA B137.4

Please call for more information on availability, pricing, other sizes and dimensions.



<...>	Main Size (inch)	GFCP Part No.	GF Part No.	weight (lb)
	2	10010495	360 004 341	3.109
	2	10010967	360 021 278	2.998
*	2	10011853	360 021 279	4.365
*	2	5757109	360 001 001	3.329
*	3	5757110	360 001 010	2.800
*	4	5757111	360 001 021	3.483
*	6	5757112	360 001 033	3.660
*	8	5757113	360 001 046	2.888

Clamp Type	A (inch)	W (inch)	H (inch)	D (inch)	Box Qty
Underpart	2.68	3.59	6.65	1.66	10
Underpart	2.68	3.59	6.65	1.66	10
Under Clamp (B)	2.68	3.59	6.65	1.66	10
Under Clamp (B)	2.68	3.59	6.65	1.66	10
Under Clamp (C)	2.68	4.60	6.66	1.66	10
Under Clamp (D)	2.68	6.26	7.27	1.66	8
Under Clamp (E)	2.68	8.68	8.43	1.66	5
Top Load (E)	2.68	6.10	7.88	1.66	10

Tapping Tee with Butt Outlet & Brass Cutter



ELECTROFUSION TAPPING TEE with BUTT OUTLET and BRASS CUTTER PE3408/PE4710, DR7 Outlet Size: 1" IPS

- Pin Type: 4.7R (4.7 Pin with Resistor)
- Cutter Size Material: 0.8/Brass
- Approval: ASTM D2513
- Approval: ASTM F1055
- Approval: ASTM D3261
- Approval: AWWA C906

Please call for more information on availability, pricing, other sizes and dimensions.

Main Size (inch)	GF Part No.	GF Part No.	weight (lb)	Clamp Type	A (inch)	D (inch)	H (inch)	L (inch)	Box Qty
1 1/4 IPS	10011663	360 021 460	0.816	Under Clamp (A)	2.22	1.31	4.83	4.58	50
2 IPS	10009410	360 003 739	0.838	Underpart	2.22	1.31	5.06	4.50	40
2 IPS	10004790	360 001 276	0.816	Under Clamp (B)	2.22	1.31	5.06	4.50	40
3 IPS	10004810	360 001 310	0.904	Under Clamp (C)	2.22	1.31	5.18	4.58	40
4 IPS/DIPS	10004828	360 001 349	0.926	Under Clamp (D)	2.22	1.31	5.93	4.46	30
4 IPS	10009411	360 003 741	0.948	Underpart	2.22	1.31	5.93	4.46	30
6 IPS/DIPS	10004587	360 001 384	1.190	Under Clamp (E)	2.22	1.31	7.06	4.61	20
8 IPS/DIPS	10003798	360 001 413	0.705	Top Load (H)	2.22	1.31	4.14	4.60	40



ELECTROFUSION TAPPING TEE with BUTT OUTLET and BRASS CUTTER PE3408/PE4710 Outlet Size: 1" CTS

- Pin Type: 4.7R (4.7 Pin with Resistor)
- Cutter Size Material: 0.8/Brass
- Approval: ASTM D2513
- Approval: ASTM F1055
- Approval: ASTM D3261
- Approval: AWWA C906

Please call for more information on availability, pricing, other sizes and dimensions.

Main Size (inch)	GF Part No.	GF Part No.	weight (lb)	Clamp Type	A (inch)	D (inch)	H (inch)	L (inch)	Box Qty
1 1/4 IPS	10011662	360 021 445	0.794	Under Clamp (A)	2.22	1.12	4.83	4.58	40
2 IPS	10003085	360 001 267	0.838	Under Clamp (B)	2.22	1.12	5.06	4.50	30
3 IPS	10004845	360 001 303	0.882	Under Clamp (C)	2.22	1.12	5.18	4.58	40
4 IPS/DIPS	10007380	360 001 348	0.926	Under Clamp (D)	2.22	1.12	5.93	4.46	30
6 IPS/DIPS	5757760	360 001 383	1.190	Under Clamp (E)	2.22	1.12	7.06	4.61	20
8 IPS/DIPS	10008645	360 001 412	0.794	Top Load (H)	2.22	1.12	4.14	4.60	40
8 IPS/DIPS	10006643	360 021 706	0.882	Top Load (H)	2.22	1.12	4.14	4.60	10



ELECTROFUSION TAPPING TEE with BUTT OUTLET and BRASS CUTTER
PE3408/PE4710, DR11
Outlet Size: 3/4" IPS

- Pin Type: 4.7R (4.7 Pin with Resistor)
- Cutter Size Material: 0.8/Brass
- Approval: ASTM D2513
- Approval: ASTM F1055
- Approval: ASTM D3261
- Approval: AWWA C906

Please call for more information on availability, pricing, other sizes and dimensions. The products listed are standard stocking options. However, GF Central Plastics offers thousands of different configurations as well as custom innovative structures.

Main Size (inch)	GFCP Part No.	GF Part No.	weight (lb)	Clamp Type	A (inch)	D (inch)	H (inch)	L (inch)	Box Qty
2	10006028	360 001 258	0.772	Under Clamp (B)	2.22	1.12	5.06	4.50	40
3	10004781	360 001 294	0.154	Under Clamp (C)	2.22	1.12	5.18	4.58	40
4	10004794	360 001 347	0.992	Under Clamp (D)	2.22	1.12	5.93	4.46	30
6	10006029	360 001 382	1.190	Under Clamp (E)	2.22	1.12	7.06	4.61	20
8	10004592	360 001 411	0.860	Top Load (H)	2.22	1.12	4.14	4.60	40

Tapping Tee with Butt Outlet



ELECTROFUSION TAPPING TEE with BUTT OUTLET PE2406/PE2708 Outlet Size: 1/2" CTS

- Pin Type: 4.7R (4.7 Pin with Resistor)
- Cutter Size Material: 0.8/Steel
- Approval: ASTM D2513
- Approval: ASTM F1055
- Approval: ASTM D3261
- Approval: CSA B137.4.1
- *Approval: ASTM D2513/F1055/D2683

Please call for more information on availability, pricing, other sizes and dimensions. The products listed are standard stocking options. However, GF Central Plastics offers thousands of different configurations as well as custom innovative structures.

<...>	Main Size (inch)	GFCP Part No.	GF Part No.	weight (lb)
	1.25" IPS	10009385	360 004 329	0.838
	1.25" IPS	5757251	360 001 226	0.507
*	1.25" IPS	10011089	360 021 418	0.794
	2.00" IPS	10011097	360 021 481	0.860
	2.00" IPS	10011197	360 021 482	0.002
	2.00" IPS	5757248	360 001 247	0.485
	3.00" IPS	10011103	360 021 538	0.794
	3.00" IPS	10011104	360 021 539	1.257
	4.00" IPS	10011110	360 021 579	0.002
	4.00" IPS	5757249	360 001 315	0.904
	6.00" IPS	10011116	360 021 633	1.257
	6.00" IPS	10011117	360 021 634	0.002
	6.00" IPS	5757250	360 001 351	1.080
	8.00" IPS	5757253	360 001 386	0.728

Clamp Type	A (inch)	D (inch)	H (inch)	L (inch)	Box Qty
Under Clamp (A)	2.22	0.62	4.83	4.58	50
Under Clamp (A)	2.22	0.62	4.83	4.58	50
Under Clamp (A)	2.22	0.62	4.83	4.58	50
Underpart	2.22	0.62	5.06	4.50	40
Underpart	2.22	0.62	5.06	4.50	10
Under Clamp (B)	2.22	0.62	5.06	4.50	50
Under Clamp (C)	2.22	0.62	5.18	4.58	40
Under Clamp (C)	2.22	0.62	5.18	4.58	10
Underpart	2.22	0.62	5.93	4.46	30
Under Clamp (D)	2.22	0.62	5.93	4.46	30
Under Clamp (E)	2.22	0.62	7.06	4.61	10
Underpart	2.22	0.62	7.06	4.61	20
Under Clamp (E)	2.22	0.62	7.06	4.61	20
Under Clamp (H)	2.22	0.62	4.14	4.60	40



ELECTROFUSION TAPPING TEE with BUTT OUTLET

PE2406/PE2708

Outlet Size: 1/2" IPS

- Pin Type: 4.7R (4.7 Pin with Resistor)
- Cutter Size Material: 0.8/Steel
- Approval: ASTM D2513
- Approval: ASTM F1055
- Approval: ASTM D3261
- Approval: CSA B137.4.1

Please call for more information on availability, pricing, other sizes and dimensions. The products listed are standard stocking options. However, GF Central Plastics offers thousands of different configurations as well as custom innovative structures.

Main Size (inch)	GFCP Part No.	GF Part No.	weight (lb)	Clamp Type	A (inch)	D (inch)	H (inch)	L (inch)	Box Qty
1 1/4 IPS	10011090	360 021 425	0.794	A-Under Clamp	2.22	0.84	4.83	4.58	50
2 IPS	10011099	360 021 490	0.882	B-Under Clamp	2.22	0.84	5.06	4.50	40
2 IPS	10011532	360 021 491	0.882	Underpart	2.22	0.84	5.06	4.50	50
3 IPS	10011105	360 021 541	1.080	C-Under Clamp	2.22	0.84	5.18	4.58	40
4 IPS	10011112	360 021 586	0.970	D-Under Clamp	2.22	0.84	5.93	4.46	30
6 IPS	10011118	360 021 639	1.257	E-Under Clamp	2.22	0.84	7.06	4.61	20
8 IPS	10011606	360 021 681	0.794	H-Under Clamp	2.22	0.84	4.41	4.60	40



ELECTROFUSION TAPPING TEE with BUTT OUTLET

PE2406/PE2708

Outlet Size: 3/4" CTS

- Pin Type: 4.7R (4.7 Pin with Resistor)
- Cutter Size Material: 0.8/Steel
- Approval: ASTM D2513
- Approval: ASTM F1055
- Approval: ASTM D3261
- Approval: CSA B137.4.1

Please call for more information on availability, pricing, other sizes and dimensions. The products listed are standard stocking options. However, GF Central Plastics offers thousands of different configurations as well as custom innovative structures.

Main Size (inch)	GFCP Part No.	GF Part No.	weight (lb)	Clamp Type	A (inch)	D (inch)	H (inch)	L (inch)	Box Qty
1 1/4 IPS	10011092	360 021 429	0.002	Under Clamp (A)	2.22	0.87	4.83	4.58	50
2 IPS	5757161	360 001 252	0.750	Under Clamp (B)	2.22	0.87	5.06	4.50	40
3 IPS	5757162	360 001 290	0.794	Under Clamp (C)	2.22	0.87	5.18	4.50	40
4 IPS	5757163	360 001 319	0.002	Under Clamp (D)	2.22	0.87	5.93	4.46	30
6 IPS	5757164	360 001 355	0.002	Under Clamp (E)	2.22	0.87	7.06	4.61	20
8 IPS	5757167	360 001 390	0.794	Under Clamp (H)	2.22	0.87	4.14	4.60	40



ELECTROFUSION TAPPING TEE with BUTT OUTLET
PE2406/PE2708
Outlet Size: 3/4" IPS

- Pin Type: 4.7R (4.7 Pin with Resistor)
- Cutter Size Material: 0.8/Steel
- Approval: ASTM D2513
- Approval: ASTM F1055
- Approval: ASTM D3261
- Approval: CSA B137.4.1

Please call for more information on availability, pricing, other sizes and dimensions. The products listed are standard stocking options. However, GF Central Plastics offers thousands of different configurations as well as custom innovative structures.

Main Size (inch)	GFCP Part No.	GF Part No.	weight (lb)	Clamp Type	A (inch)	D (inch)	H (inch)	L (inch)	Box Qty
1 1/4 IPS	5757084	360 001 233	0.794	Under Clamp (A)	2.22	1.08	4.83	4.58	50
2 IPS	5757087	360 001 259	0.794	Under Clamp (B)	2.22	1.08	5.06	4.50	40
2 IPS	10009392	360 003 120	0.860	Under Clamp (B)	2.22	1.08	5.06	4.50	30
3 IPS	5757088	360 001 295	0.816	Under Clamp (C)	2.22	1.08	5.18	4.58	40
4 IPS	5757141	360 001 325	0.882	Under Clamp (D)	2.22	1.08	5.93	4.46	30
4 IPS	10009401	360 004 332	0.926	Under Clamp (D)	2.22	1.08	5.93	4.46	30
6 IPS	5757143	360 001 361	1.146	Under Clamp (E)	2.22	1.08	7.06	4.61	20
6 IPS	10009405	360 004 333	1.190	Under Clamp (E)	2.22	1.08	7.06	4.61	20



ELECTROFUSION TAPPING TEE with BUTT OUTLET
PE2406/PE2708
Outlet Size: 1" CTS

- Pin Type: 4.7R (4.7 Pin with Resistor)
- Cutter Size Material: 0.8/Steel
- Approval: ASTM D2513
- Approval: ASTM F1055
- Approval: ASTM D3261
- Approval: CSA B137.4.1

Please call for more information on availability, pricing, other sizes and dimensions. The products listed are standard stocking options. However, GF Central Plastics offers thousands of different configurations as well as custom innovative structures.

Main Size (inch)	GFCP Part No.	GF Part No.	weight (lb)	Clamp Type	A (inch)	D (inch)	H (inch)	L (inch)	Box Qty
1 1/4 IPS	5757030	360 001 240	0.882	Under Clamp (A)	2.22	1.12	4.83	4.58	50
1 1/4 IPS	10010563	360 021 451	0.816	Underpart	2.22	1.12	4.83	4.58	40
1 1/4 IPS	5757050	360 021 449	0.441	Under Clamp (A)	2.22	1.12	4.83	4.58	15
2 IPS	5757032	360 001 270	0.750	Under Clamp (B)	2.22	1.12	5.06	4.50	40
2 IPS	10009397	360 004 334	0.882	Underpart	2.22	1.12	5.06	4.50	40
2 IPS	10003171	360 001 272	0.882	Under Clamp (B)	2.22	1.12	5.06	4.50	10
2 IPS	5757052	360 021 515	0.485	Under Clamp (B)	2.22	1.12	5.06	4.50	15
3 IPS	5757033	360 001 306	0.816	Under Clamp (C)	2.22	1.12	5.18	4.58	40
3 IPS	10010564	360 021 556	0.970	Underpart	2.22	1.12	5.18	4.58	30
3 IPS	5757053	360 021 554	1.543	Under Clamp (C)	2.22	1.12	5.18	4.58	15
4 IPS	5757034	360 001 335	0.904	Under Clamp (D)	2.22	1.12	5.93	4.46	30
4 IPS	10009402	360 021 610	1.080	Underpart	2.22	1.12	5.93	4.46	20
4 IPS	10010565	360 021 608	0.002	Underpart	2.22	1.12	5.93	4.46	20
4 IPS	5757054	360 021 606	0.617	Under Clamp (D)	2.22	1.12	5.93	4.46	10
6 IPS	5757036	360 001 370	1.080	Under Clamp (E)	2.22	1.12	7.06	4.61	20

table continued on the next page

Main Size (inch)	GFCP Part No.	GF Part No.	weight (lb)	Clamp Type	A (inch)	D (inch)	H (inch)	L (inch)	Box Qty
6 IPS	10009407	360 004 335	0.551	Underpart	2.22	1.12	7.06	4.61	10
6 IPS	5757056	360 021 658	0.772	Under Clamp (E)	2.22	1.12	7.06	4.61	10
6 IPS	5757058	360 021 695	0.463	Underpart	2.22	1.12	4.14	4.60	10
8 IPS	5757038	360 001 399	0.728	Top Load (H)	2.22	1.12	4.14	4.60	40

Tapping Tee



ELECTROFUSION TAPPING TEE

PE2406/PE2708

Outlet Size: 1" IPS, DR7

- Pin Type: 4.7R (4.7 Pin with Resistor)
- Cutter Size Material: 0.8/Steel
- Approval: ASTM D2513
- Approval: ASTM F1055
- Approval: ASTM D3261
- Approval: CSA B137.4.1

Please call for more information on availability, pricing, other sizes and dimensions. The products listed are standard stocking options. However, GF Central Plastics offers thousands of different configurations as well as custom innovative structures.

Main Size (inch)	GFCP Part No.	GF Part No.	weight (lb)	Clamp Type	A (inch)	D (inch)	H (inch)	L (inch)	Box Qty
1 1/4 IPS	5757083	360 001 244	0.794	Under Clamp (A)	2.22	1.31	4.83	4.58	50
1 1/4 IPS	10009388	360 004 336	0.794	Underpart	2.22	1.31	4.83	4.58	50
2 IPS	5757150	360 001 278	0.772	Under Clamp (B)	2.22	1.31	4.94	4.50	40
2 IPS	10009398	360 003 122	0.904	Underpart	2.22	1.31	4.94	4.50	40
3 IPS	5757151	360 001 312	0.904	Under Clamp (C)	2.22	1.31	5.06	4.50	40
3 IPS	10009399	360 004 337	0.816	Underpart	2.22	1.31	5.18	4.58	40
4 IPS	5757152	360 001 340	0.926	Under Clamp (D)	2.22	1.31	5.96	4.46	30
4 IPS	10009403	360 004 338	1.058	Underpart	2.22	1.31	5.96	4.46	20
6 IPS	5757153	360 001 376	1.102	Under Clamp (E)	2.22	1.31	7.06	4.61	20
6 IPS	10009408	360 004 339	1.301	Underpart	2.22	1.31	7.06	4.61	20
8 IPS	5757157	360 001 404	0.794	Top Load Clamp (H)	2.22	1.31	4.14	4.60	40



ELECTROFUSION TAPPING TEE

PE2406/PE2708

Outlet Size - 1 1/4" CTS

- Pin Type: 4.7R (4.7 Pin with Resistor)
- Cutter Size Material: 0.8/Steel
- Approval: ASTM D2513
- Approval: ASTM F1055
- Approval: ASTM D3261

Please call for more information on availability, pricing, other sizes and dimensions. The products listed are standard stocking options. However, GF Central Plastics offers thousands of different configurations as well as custom innovative structures.

Main Size (inch)	GFCP Part No.	GF Part No.	weight (lb)	Clamp Type	A (inch)	D (inch)	H (inch)	L (inch)	Box Qty
2 IPS	5757086	360 001 282	0.485	Under Clamp (B)			5.06	4.50	40
4 IPS	5757140	360 001 344	0.926	Under Clamp (D)			5.93	4.46	30
6 IPS	5757142	360 001 379	0.794	Under Clamp (E)			7.06	4.61	20
8 IPS	5757145	360 001 408	0.816	Top Load Clamp (H)			4.14	4.60	40

Tapping Tee with Butt Outlet & Steel Cutter



ELECTROFUSION TAPPING TEE with BUTT OUTLET and STEEL CUTTER
PE3408/PE4710
Outlet Size: 1/2" CTS

- Pin Type: 4.7R (4.7 Pin with Resistor)
- Cutter Size Material: 0.8/Steel
- Approval: ASTM D2513
- Approval: ASTM F1055
- Approval: ASTM D3261

Please call for more information on availability, pricing, other sizes and dimensions. The products listed are standard stocking options. However, GF Central Plastics offers thousands of different configurations as well as custom innovative structures.

Main Size (inch)	GFCP Part No.	GF Part No.	weight (lb)	Clamp Type	A (inch)	D (inch)	H (inch)	L (inch)	Box Qty
1 1/4 IPS	10004749	360 001 225	0.728	Under Clamp (A)	2.22	0.62	4.83	4.58	50
1 1/4 IPS	10010501	360 003 724	0.002	Underpart	2.22	0.62	4.83	4.58	50
2 IPS	10004761	360 001 246	0.838	Under Clamp (B)	2.22	0.62	5.06	4.50	50
2 IPS	10009389	360 003 725	0.860	Underpart	2.22	0.62	5.06	4.50	40
3 IPS	10010499	360 003 726	0.948	Underpart	2.22	0.62	5.18	4.58	40
4 IPS	10010502	360 003 727	1.102	Underpart	2.22	0.62	5.93	4.46	25
4 IPS	10011108	360 021 575	0.882	Under Clamp (D)	2.22	0.62	5.93	4.46	30
6 IPS	10010504	360 003 728	1.257	Underpart	2.22	0.62	7.06	4.61	30
6 IPS	10011115	360 021 630	1.058	Under Clamp (E)	2.22	0.62	7.06	4.61	20

Tapping Tee with Butt Outlet & Steel Cutter



ELECTROFUSION TAPPING TEE with BUTT OUTLET and STEEL CUTTER PE3408/PE4710, DR11 Outlet Size: 3/4" IPS

- Pin Type: 4.7R (4.7 Pin with Resistor)
- Cutter Size Material: 0.8/Steel
- Approval: ASTM D2513
- Approval: ASTM F1055
- Approval: ASTM D3261
- *Approval: AWWA C906; NSF-61

Please call for more information on availability, pricing, other sizes and dimensions. The products listed are standard stocking options. However, GF Central Plastics offers thousands of different configurations as well as custom innovative structures.

<...>	Main Size (inch)	GFCP Part No.	GF Part No.	weight (lb)
	1 1/4 IPS	10008687	360 001 232	0.794
	1 1/4 IPS	10010422	360 003 730	0.838
	2 IPS	10010423	360 003 145	0.860
*	2 IPS	10012665	360 021 494	0.904
	3 IPS	10010424	360 003 731	0.948
	4 IPS	10010425	360 003 732	1.124
*	4 IPS	10012666	360 021 627	0.992
	6 IPS	10010426	360 003 733	1.257
*	6 IPS	10012667	360 021 670	1.190
	8 IPS	10008654	360 021 702	0.860
	8 IPS	10010427	360 003 715	0.750

Clamp Type	A (inch)	D (inch)	H (inch)	L (inch)	Box Qty
Under Clamp (A)	2.22	1.12	4.83	4.58	50
Underpart	2.22	1.12	4.83	4.58	50
Underpart	2.22	1.12	5.06	4.50	30
Under Clamp (B)	2.22	1.12	5.06	4.50	40
Underpart	2.22	1.12	5.18	4.58	25
Underpart	2.22	1.12	5.93	4.46	20
Under Clamp (D)	2.22	1.12	5.93	4.46	30
Underpart	2.22	1.12	7.06	4.61	12
Under Clamp (E)	2.22	1.12	7.06	4.61	20
Under Clamp (H)	2.22	1.12	4.14	4.60	10
Under Clamp (H)	2.22	1.12	4.14	4.60	40



ELECTROFUSION TAPPING TEE with BUTT OUTLET and STEEL CUTTER

PE3408/PE4710

Outlet Size: 1" CTS

- Pin Type: 4.7R (4.7 Pin with Resistor)
- Cutter Size Material: 0.8/Steel
- Approval: ASTM D2513
- Approval: ASTM F1055
- Approval: ASTM D3261

Please call for more information on availability, pricing, other sizes and dimensions. The products listed are standard stocking options. However, GF Central Plastics offers thousands of different configurations as well as custom innovative structures.

Main Size (inch)	GFCP Part No.	GF weight Part No.	(lb)	Clamp Type	A (inch)	D (inch)	H (inch)	L (inch)	Box Qty
1 1/4 IPS	10007328	360 001 238	0.705	Under Clamp (A)	2.22	1.12	4.83	4.58	50
1 1/4 IPS	10010566	360 021 446	0.838	Underpart	2.22	1.12	4.83	4.58	40
2 IPS	10009394	360 003 734	0.860	Underpart	2.22	1.12	5.06	4.50	30
2 IPS	10010093	360 021 513	0.838	Under Clamp (B)	2.22	1.12	5.06	4.50	20
3 IPS	10007349	360 001 304	0.794	Under Clamp (C)	2.22	1.12	5.18	4.58	40
3 IPS	10010500	360 003 735	0.948	Underpart	2.22	1.12	5.18	4.58	30
4 IPS	10010503	360 003 736	1.080	Underpart	2.22	1.12	5.93	4.46	25
6 IPS	10010505	360 003 737	1.146	Underpart	2.22	1.12	7.06	4.46	15
8 IPS	10012485	360 021 693	1.058	Top Load (H)	2.22	1.12	4.14	4.60	10



ELECTROFUSION TAPPING TEE with BUTT OUTLET and STEEL CUTTER

PE3408/PE4710

Outlet Size: 1" IPS

- Pin Type: 4.7R (4.7 Pin with Resistor)
- Cutter Size Material: 0.8/Steel
- Approval: ASTM D2513
- Approval: ASTM F1055
- Approval: ASTM D3261

Please call for more information on availability, pricing, other sizes and dimensions. The products listed are standard stocking options. However, GF Central Plastics offers thousands of different configurations as well as custom innovative structures.

Main Size (inch)	SDR	GFCP Part No.	GF weight Part No.	(lb)
1 1/4 IPS	7	10003452	360 001 243	0.728
1 1/4 IPS	7	10009387	360 003 738	0.750
2 IPS	7	10003355	360 001 277	0.794
2 IPS	7	10009395	360 003 740	0.904
3 IPS	7	10004792	360 001 311	0.838
3 IPS	7	10013267	360 021 567	0.882
4 IPS	7	10003701	360 001 339	0.948
4 IPS	7	10013266	360 021 624	0.970
6 IPS	11	10004820	360 021 662	1.411
6 IPS	7	10004823	360 001 375	1.301
8 IPS	7	10004858	360 001 403	0.772

Clamp Type	A (inch)	D (inch)	H (inch)	L (inch)	Box Qty
Under Clamp (A)	2.22	1.31	4.83	4.58	30
Underpart	2.22	1.31	4.83	4.58	30
Under Clamp (B)	2.22	1.31	5.06	4.50	40
Underpart	2.22	1.31	5.06	4.50	30
Under Clamp (C)	2.22	1.31	5.18	4.58	40
Underpart	2.22	1.31	5.18	4.58	30
Under Clamp (D)	2.22	1.31	5.93	4.46	30

table continued on the next page

Clamp Type	A	D	H	L	Box Qty
	(inch)	(inch)	(inch)	(inch)	
Underpart	2.22	1.31	5.93	4.46	30
Underpart	2.22	1.31	7.06	4.61	10
Under Clamp (E)	2.22	1.31	7.06	4.61	20
Top Load (H)	2.22	1.31	4.14	4.60	40
