

CPU Universal Conduit Outlet Boxes and Covers

Explosionproof, Dust-Ignitionproof

UNILETS® for use with Threaded Metal Conduit.

Class I, Division 1 and 2, Groups C, D
Class II, Division 1 and 2, Groups E, F, G
Class III

Enclosures and Junction Boxes

ENCLOSURES AND JUNCTION BOXES: HAZARDOUS LOCATION CONDUIT OUTLET BOXES

Applications

- Complies with a wide range of classified area requirements.
- Corrosion-resistant: ideal indoors or out.
- For pulling of wires.
- Connect conduit lengths and change direction of conduit runs.
- Provide access for maintenance.

Features

- Malleable iron bodies have high tensile strength and ductility. Provides great resistance to corrosion, impact, and shock.
- Accurately tapped, tapered hub threads for tight, rigid joints and ground continuity.
- Furnished with covers.
- General purpose wiring.
- Universal design with four threaded universal hubs and three close-up plugs.
- Serve as mounting outlets for lighting fixtures when used with hub cover.
- Wide, accurately ground explosion-proof mating surfaces.
- Smooth, rounded integral bushing in each hub type box protects conductor insulation.

Standard Materials

- Bodies and covers : malleable iron
- Connection block: phenolic

Standard Finishes

- Bodies and covers: triple-coat — (1) zinc electroplate, (2) chromate, and (3) epoxy powder coat

Certifications and Compliances

- UL Standard: UL 886 (UL 1203)
- UL Listed: E10444

Box Type	Conduit Size (Inches)	Fixture Stem Size Inches	Cover Opening Inches/Millimeters	Capacity in ³ /dm ³	Catalog Number
----------	-----------------------	--------------------------	----------------------------------	---	----------------

CPU Box with Blank Cover

Furnished with four threaded universal 3/4" hubs, four 3/4" to 1/2" reducers, and three 1/2" close-up plugs.



1/2 or 3/4	Blank	3.81/96.8	21.0/0.34	CPU20
------------	-------	-----------	-----------	--------------

CPU Box with Hub Cover

(Supports lbs – 112.5 kg. Furnished with four threaded universal 3/4" hubs, four 3/4" to 1/2" reducers, and three 1/2" close-up plugs.



1/2 or 3/4	1/2	3.81/96.8	21.0/0.34	CPU20-50
1/2 or 3/4	3/4	3.81/96.8	21.0/0.34	CPU20-75

CPU Covers only

Furnished with fastening screws.



Cover	Blank	3.81/96.8	21.0/0.34	CPSK20B
-------	-------	-----------	-----------	----------------



Hub Covers	1/2	3.81/96.8	21.0/0.34	CPSK20-50
	3/4	3.81/96.8	21.0/0.34	CPSK20-75

CPU Connection Block

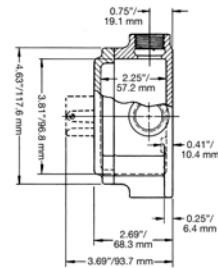
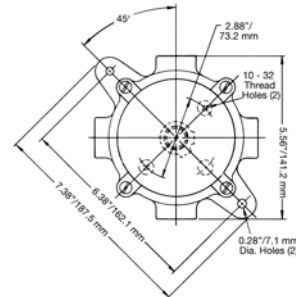
Phenolic. With fastening strap and two mounting screws.

5-Wire, 20 Amp, 300 Volt

CB205

Dimensions

CPU Box with Cover



Connection Block

