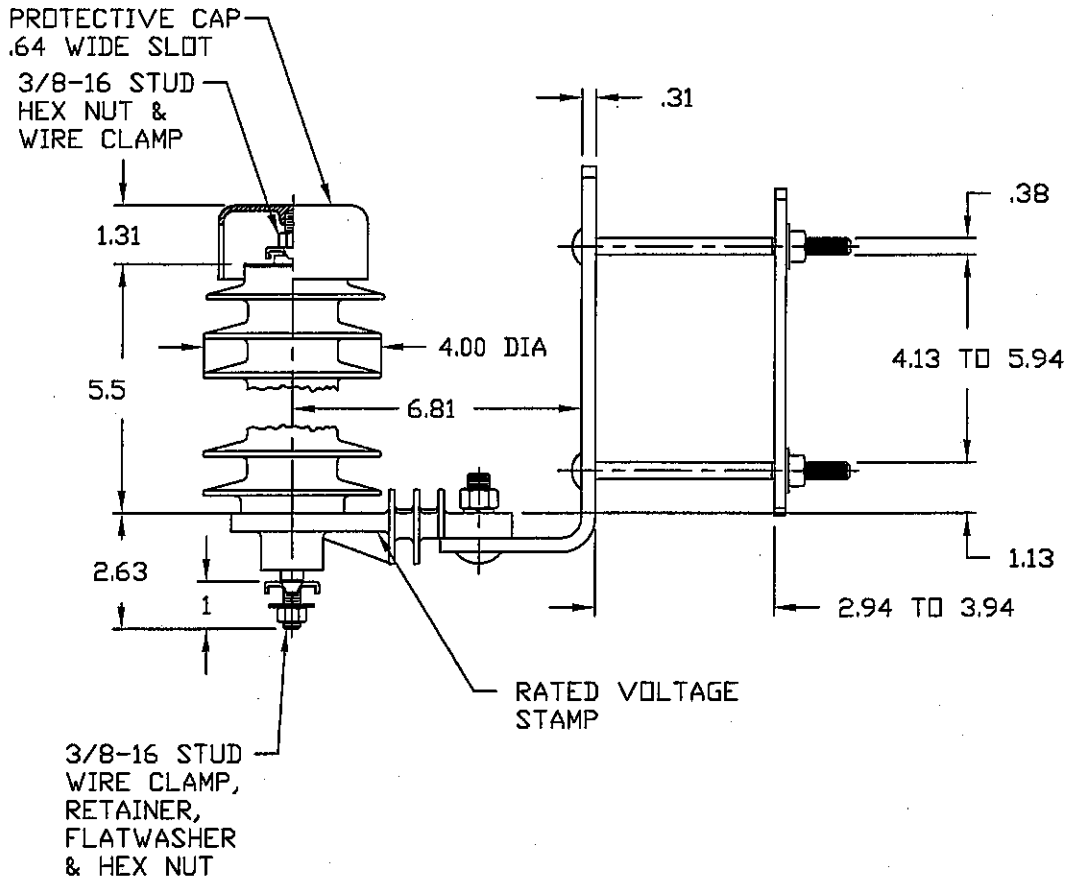


NOTES:

1. DIMENSIONS SUBJECT TO +/- 3% TOLERANCE
2. LEAKAGE DISTANCE (Inches) - 15.4
3. ALTITUDE 0-12000 FT. ABOVE SEA LEVEL
4. WEIGHT OF UNIT INCLUDING HARDWARE - 6.6 LB.
5. MAXIMUM CONTINUOUS LINE-TO-GROUND OPERATING VOLTAGE 10.2 kV MCOV
6. DUTY CYCLE VOLTAGE RATING 12 kV RMS.
7. PVR RISER LABEL ON UNDERSIDE OF INSULATING BASE, OR ARRESTER



.5 μ SEC 10KA IR kV	500 A SWITCHING SURGE IR kV	MAXIMUM 8/20 DISCHARGE VOLTAGE - kV AT					
		1.5 kA	3.0 kA	5 kA	10 kA	20 kA	40 kA
35.5	23.6	25.9	27.9	29.4	32.5	37.3	44.0

RISER POLE SURGE ARRESTER	OHIO BRASS TOLERANCE CHART	HUBBELL® POWER SYSTEMS					
	CONFIDENTIAL: THIS DRAWING AND ITS CONTENTS ARE CONFIDENTIAL AND THE EXCLUSIVE PROPERTY OF HUBBELL POWER SYSTEMS. NO PUBLICATION, DISTRIBUTION OR COPIES MAY BE MADE WITHOUT THE WRITTEN CONSENT OF HUBBELL POWER SYSTEMS. HUBBELL POWER SYSTEMS UNPUBLISHED ALL RIGHTS RESERVED UNDER THE COPYRIGHT LAWS.	TITLE PVR ARRESTER 10.2 KV MCOV					
		SIZE S	DWG NO. ALES7XXX	CAT / PART / ASSY NO. 221610-7324			REV 7
REV DATE 10/24/07	DO NOT SCALE THIS DRAWING	DRN BY ENG102	DATE 06/17/00	SHEET 1 OF 1			