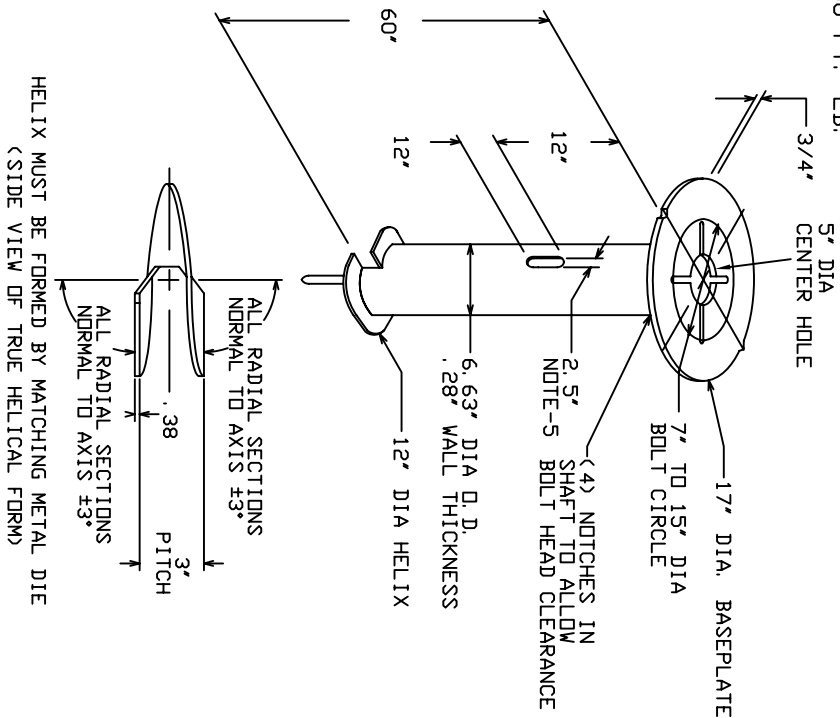


RECOMMENDED TORQUE NO HARDWARE INCLUDED, T112-0633, OR T112-0393
NO GREATER THAN 10,000 FT. L.B. HARDWARE PACKAGES SOLD SEPARATELY



LIGHTING FOUNDATION CAT. NO. T112-0645

T112-0393 HARDWARE PACKAGE INCLUDES:
(4) 3/4" X 3-1/2" GALV. CARRIAGE
(4) BOLT
(4) ROUND FLAT WASHERS
(4) 3/4" NUTS

T112-0633 HARDWARE PACKAGE INCLUDES:
(4) 3/4" X 3-1/2" GALV. CARRIAGE
(4) BOLT FULL THREADS
(4) ROUND FLAT WASHERS
(5) 3/4" NUTS
(4) LOCK WASHERS
(4) 3" X 3" X 1/4" TAPPED
RETAINING WASHER

-NOTES-

1. FINISH: HOT DIP GALVANIZE PER ASTM-A153 (LATEST REVISION).
2. BASEPLATE TO BE PERPENDICULAR TO SHAFT AXIS ($\pm 1^\circ$) AND HOLE CENTERLINE CONCENTRIC ($\pm .188$) TO SHAFT AXIS.
3. STENCIL MIN. 1/2 IN. LETTERS MANUFACTURER'S NUMBER AFTER GALVANIZING.
4. PILOT POINT AND SHAFT AXES TO BE CONCENTRIC ($\pm .125$ FIM) AND IN LINE ($\pm 2^\circ$) FLAME CUT TWO SLOTS IN SHAFT PERPENDICULAR TO THE BASEPLATE.
5. PREHEAT, TUMBLEBLAST, HANDGRIND, AND CLEAN BASEPLATE, HELIX, AND PILOT POINT ON ALL WELDED AREAS.
6. FLAMECUT IRREGULARITIES PERMISSIBLE: (1) VALLEYS NOT TO EXCEED 3/32" BELOW NOMINAL SURFACE LEVEL, (2) PEAKS OR POSITIVE IRREGULARITIES NOT TO EXCEED 1/32 IN. ABOVE NOMINAL SURFACE LEVEL OR INTERSECTIONS OF NOMINAL SURFACES.
7. MANUFACTURER TO HAVE IN EFFECT INDUSTRY RECOGNIZED WRITTEN QUALITY CONTROL FOR ALL MATERIALS AND MANUFACTURING PROCESSES.
8. ALL MATERIAL IS TO BE NEW, UNUSED AND MILL TRACEABLE MEETING THE FOLLOWING SPECIFICATIONS:
9. BASEPLATE: ASTM A36-(LATEST REVISION) STRUCTURAL STEEL
(CONFORM TO AASHTO TECH. BUL. #270)

SHAFT: ASTM A252-(LATEST REVISION) GRADE 2, STEEL PIPE PILES,
ALTERNATE MATERIAL: ASTM A53-(LATEST REVISION) TYPE E OR S,
GRADE B, STEEL PIPE OR ASTM A500-(LATEST REVISION) GRADE B,
STRUCTURAL STEEL TUBING.

HELIX: ASTM A635-(LATEST REVISION) 3/8" THICK HOT ROLLED STEEL PLATE
OR COIL.

PILOT POINT: ASTM A575-(LATEST REVISION) 1-1/4" DIAMETER HOT ROLLED STEEL BAR.

BOLTS: CARRIAGE BOLT, 3/4-10UNC-2A PER ANSI B-18.5, SAE J429 GRADE-5,
NUTS: HEAVY HEX NUTS PER ASTM A194 GRADE 2H OR ASTM A563 GRADE DH,
MEETING THE SUPPLEMENTARY REQUIREMENTS OF ASTM A563, 1-8UNC-2B
PER ANSI B18.2.2.

10. BASEPLATE IS PERMANENTLY STAMPED WITH MANUFACTURER'S
IDENTIFICATION 'ABC' IN 1/2" LETTERS AND DATE CODE IN 1/4" LETTERS.
11. BASEPLATE PERMANENTLY MARKED TO INDICATE CABLEWAY OPENING IN
SHAFT.

CHANCE		HUBBELL POWER SYSTEMS	
CONFIDENTIAL: THIS DRAWING AND ITS CONTENTS ARE THE PROPERTY OF HUBBELL POWER SYSTEMS. NO PUBLICATION, DISTRIBUTION OR COPIES MAY BE MADE WITHOUT THE WRITTEN CONSENT OF HUBBELL POWER SYSTEMS. UNPUBLISHED ALL RIGHTS RESERVED UNDER THE COPYRIGHT LAWS.		HUBBELL POWER SYSTEMS	
TITLE		LIGHTING FOUNDATION	
SIZE	DWG NO.	DO NOT SCALE THIS DRAWING	REV
SB	SA112-0645	DEN BY KSH	D
DATE 4/22/05		SHEET 1	