

Condulet® EAJ Series Conduit Outlet Boxes with Covers

Cl. I, Div. 1 & 2, Groups A, B, C, D
Cl. II, Div. 1, Groups E, F, G
Cl. II, Div. 2, Groups F, G
Cl. III
NEMA 3, 4, 7ABCD, 9EFG

Explosionproof
Dust-ignitionproof
Raintight
Wet Locations

3F
3F

Applications:

EAJ Series Conduit Outlet Boxes are installed in conduit systems within hazardous areas to:

- Protect conductors in threaded rigid conduit
- Act as pull and splice boxes
- Interconnect lengths of conduit
- Change conduit direction
- Provide access to conductors for maintenance and future system changes
- Act as mounting outlets for fixtures (with appropriate covers)
- Act as sealing fittings (with appropriate covers)

Features:

EAJ Conduit Outlet Boxes have:

- Water shedding cover – suitable for wet locations when mounted in upright position
- External cover threads on body protecting conductors from damage during pulling
- No pinching of conductors during cover installation
- Six different hub arrangements
- Taper threaded hubs to provide ground continuity
- Smooth integral hub bushing to protect conductor insulation when pulling
- Internally threaded cover openings for additional wiring room
- Flat overlapping threaded covers furnished with boxes
- Weather-resistant finish
- Internal green ground screw #10 standard in all boxes
- Four standard mounting pads, except for EAJB and EAJD

Certifications and Compliances:

NEC/CEC:

- Class I, Divisions 1 & 2, Groups A, B, C, D
- Class II, Division 1, Groups E, F, G
- Class II, Division 2, Groups F, G
- Class III

UL Standard:

- UL1203

CSA Standard:

- C22.2 No. 30

Standard Materials:

- Body – Feraloy® iron alloy
- Cover – copper-free aluminum

A Form 9 products with 5" cover opening are not suitable for Group A.

B Available in copper-free aluminum. To order, add suffix 'SA' to end of catalog number.

C EAJ0687 is listed for Groups C and D only.

Standard Finishes:

- Feraloy iron alloy – electrogalvanized and aluminum acrylic paint
- Aluminum – natural

Options:

- | Description | Suffix |
|--|-------------|
| • Bodies – copper-free aluminum | SA |
| • Covers – Feraloy iron alloy..... | WOD |
| <i>Electrogalvanized and aluminum acrylic paint finish</i> | |
| • Corro-free™ epoxy powder coat..... | S752 |

Ordering Information:

EAJB



Cover Opening Dia.	Hub Size	Cat. #
3 ³ / ₁₆	1/2"	EAJB16
3 ³ / ₁₆	3/4"	EAJB26 ^B
3 ³ / ₁₆	1"	EAJB36 ^B

EAJC



Cover Opening Dia.	Hub Size	Cat. #
3 ³ / ₁₆	1/2"	EAJC16 ^B
3 ³ / ₁₆	3/4"	EAJC26 ^B
3 ³ / ₁₆	1"	EAJC36 ^B

EAJD



Cover Opening Dia.	Hub Size	Cat. #
3 ³ / ₁₆	1/2"	EAJD16
3 ³ / ₁₆	3/4"	EAJD26 ^B
3 ³ / ₁₆	1"	EAJD36 ^B

EAJL



Cover Opening Dia.	Hub Size	Cat. #
3 ³ / ₁₆	1/2"	EAJL16 ^B
3 ³ / ₁₆	3/4"	EAJL26 ^B
3 ³ / ₁₆	1"	EAJL36 ^B

EAJT



Cover Opening Dia.	Hub Size	Cat. #
3 ³ / ₁₆	1/2"	EAJT16 ^B
3 ³ / ₁₆	3/4"	EAJT26 ^B
5	1 1/4"	EAJT49 ^{A B}
5	1 1/2"	EAJT59 ^{A B}
5	2"	EAJT69 ^{A B}

EAJX



Cover Opening Dia.	Hub Size	Cat. #
3 ³ / ₁₆	1/2"	EAJX16 ^B
3 ³ / ₁₆	3/4"	EAJX26 ^B
3 ³ / ₁₆	1"	EAJX36 ^B

Size Ranges:

- Hub – 1/2" to 2"
- Cover opening – 3³/₁₆" to 5" diameter

EAJ Threaded Covers

Flat Covers



Cover Opening Dia.	Cat. #
3 ³ / ₁₆	EAJ06
5	EAJ09

Dome Covers



Cover Opening Dia.	Depth	Cat. #
3 ³ / ₁₆	2	EAJ0612

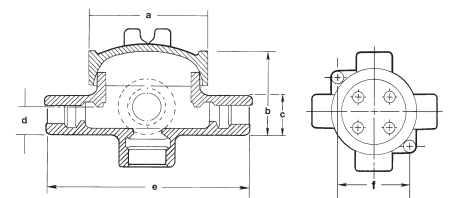
Fixture Covers

Union Hub Type



Cover Opening Dia.	Fixt. Stem Size	Cat. #
3 ³ / ₁₆	3/4"	EAJ0687 ^C

Dimensions (in Inches):

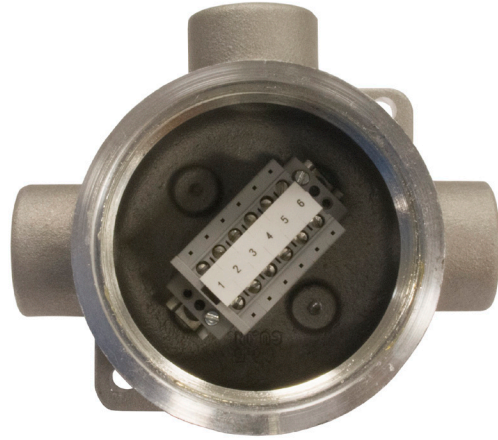


Cat. #	a	b	c	d	e	f
16	3 ³ / ₄	2 ¹⁷ / ₃₂	1 ¹ / ₂	3/4	5 ⁵ / ₁₆	3 ³ / ₃₂
26	3 ³ / ₄	2 ²⁵ / ₃₂	1 ³ / ₄	7/8	5 ⁹ / ₁₆	3 ⁷ / ₃₂
36	3 ³ / ₄	2 ²⁵ / ₃₂	1 ³ / ₄	7/8	5 ⁹ / ₁₆	3 ⁷ / ₃₂
49	5 ³ / ₄	4 ¹ / ₁₆	2 ³ / ₁₆	1 ³ / ₃₂	7 ⁵ / ₁₆	4 ³ / ₄
59	5 ³ / ₄	4 ¹ / ₁₆	3	1 ¹ / ₂	7 ¹³ / ₁₆	4 ³ / ₄
69	5 ³ / ₄	4 ¹ / ₁₆	3	1 ¹ / ₂	7 ¹³ / ₁₆	4 ³ / ₄

Factory Installed Terminal Block Ordering Guide

Ordering Information:**DIN Rail Mounted Terminal Blocks****Electrical Specifications:****30 Amp, 150V, AWG 26-10**

Cat. #	Description
DIN12	DIN Rail Mounted, 2 Terminal Blocks EAJ (Shapes X, C, L, T) Form 6 & 9 Cover Dia. Openings
DIN13	DIN Rail Mounted, 3 Terminal Blocks EAJ (Shapes X, C, L, T) Form 6 & 9 Cover Dia. Openings
DIN14	DIN Rail Mounted, 4 Terminal Blocks EAJ (Shapes X, C, L, T) Form 6 & 9 Cover Dia. Openings
DIN16	DIN Rail Mounted, 6 Terminal Blocks EAJ (Shapes X, C, L, T) Form 6 & 9 Cover Dia. Opening
DIN18	DIN Rail Mounted, 8 Terminal Blocks EAJ (Shape T) Form 9 Cover Dia. Opening
DIN112	DIN Rail Mounted, 12 Terminal Blocks EAJ (Shape T) Form 9 Cover Dia. Opening

**Direct Mounted Terminal Blocks****Electrical Specifications:****30 Amp, 300V, AWG 26-10**

Cat. #	Description
TB14	Direct Mounted Terminal Block, 4 Terminal Blocks EAJ (Shapes X, C, L, T) Form 6 & 9 Cover Dia. Openings
TB16	Direct Mounted Terminal Block, 6 Terminal Blocks EAJ (Shapes X, C, L, T) Form 6 & 9 Cover Dia. Openings
TB18	Direct Mounted Terminal Block, 8 Terminal Blocks EAJ (Shape T) Form 9 Cover Dia. Opening
TB112	Direct Mounted Terminal Block, 12 Terminal Blocks EAJ (Shape T) Form 9 Cover Dia. Opening

