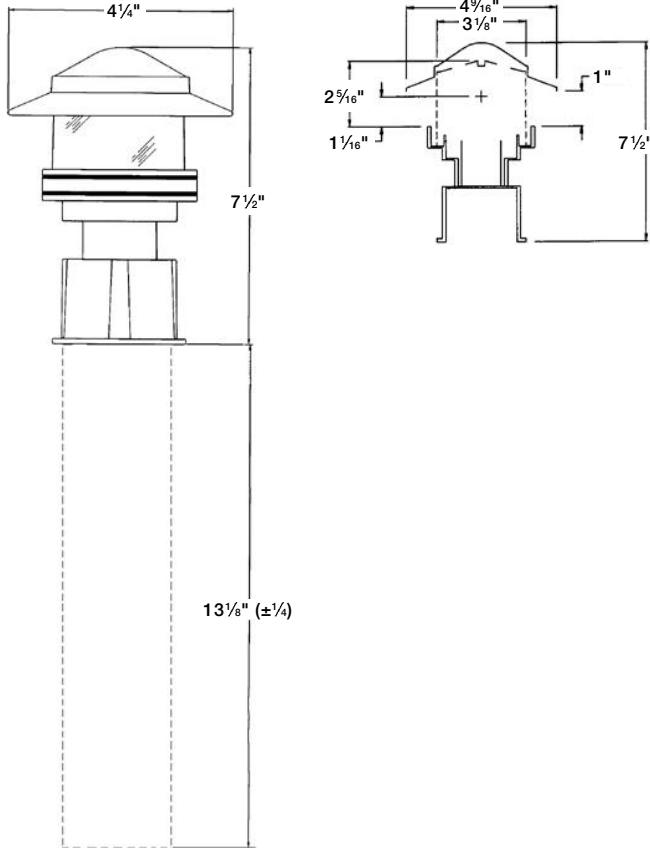


Outdoor lighting

K822BR specifications

Dimensions

- 7.5" height option



13 1/8" (±1/4)

See following page for 10" height.

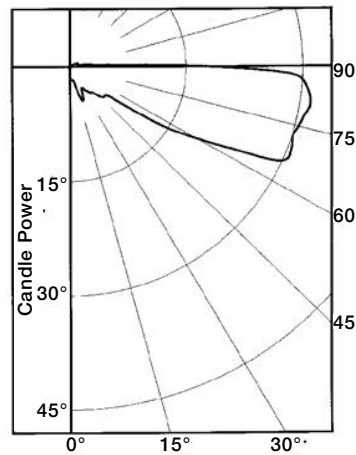
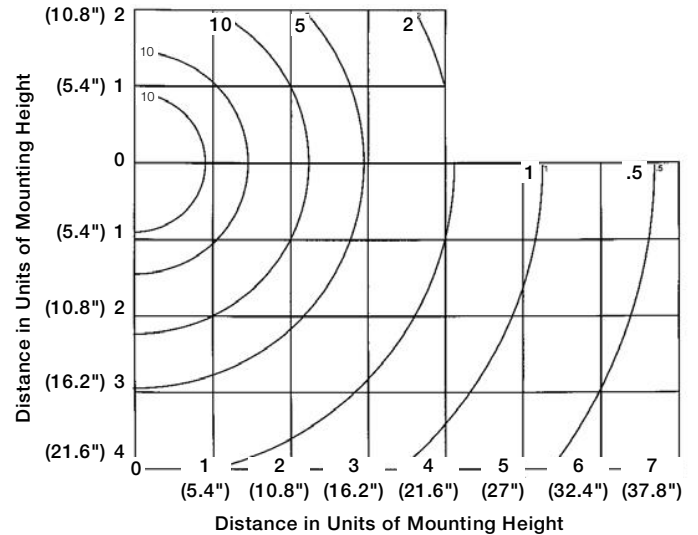
Zonal lumen summary

Zone deg.	Lumens	Percent of lamp output based on 400 lumens	Percent of total output
0-30	3	0.7	2.4
0-40	5	1.3	4.5
0-60	19	4.8	16.3
0-90	111	27.8	94.6
90-120	6	1.5	5.2
90-130	6	1.6	5.4
90-150	6	1.6	5.4
90-180	6	1.6	5.4
0-180	118	29.4	100.0

Note: Total luminaire efficiency=29.4%.

ISO foot candles

- Values based on .45 (5.4") foot mounting height and a 40-watt A15 clear 400-lumen lamp.

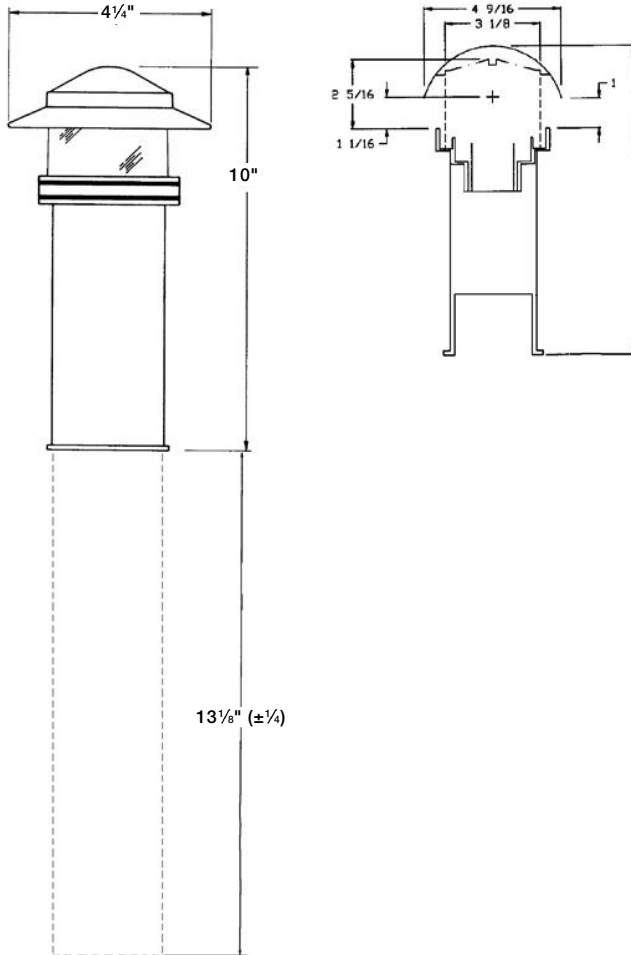


Deg	Candela	Lumens
0	2	—
5	2	0
15	3	1
25	4	2
35	4	2
45	6	4
55	10	10
65	29	27
75	31	32
85	31	33
90	22	—
95	3	4
105	1	1
115	1	0
125	0	0
135	0	0
145	0	0
155	0	0
165	0	0
175	0	0
180	0	—

Outdoor lighting K822BR specifications

Dimensions

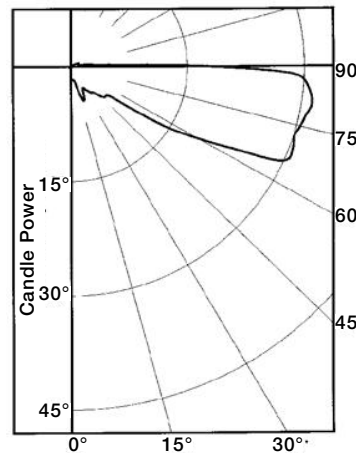
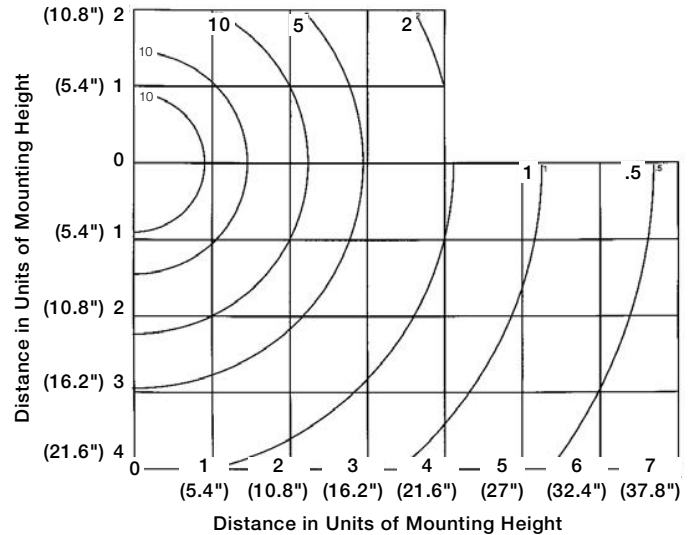
- 10" height option



See previous page for 7.5" height.

ISO foot candles

- Values based on .67 (8.04") foot mounting height and a 40-watt A15 clear 400-lumen lamp.



Deg	Candela	Lumens
0	2	—
5	2	0
15	3	1
25	4	2
35	4	2
45	6	4
55	10	10
65	29	27
75	31	32
85	31	33
90	22	—
95	3	4
105	1	1
115	1	0
125	0	0
135	0	0
145	0	0
155	0	0
165	0	0
175	0	0
180	0	—

Zonal lumen summary

Zone deg.	Lumens	Percent of lamp output based on 400 lumens	Percent of total output
0-30	3	0.7	2.4
0-40	5	1.3	4.5
0-60	19	4.8	16.3
0-90	111	27.8	94.6
90-120	6	1.5	5.2
90-130	6	1.6	5.4
90-150	6	1.6	5.4
90-180	6	1.6	5.4
0-180	118	29.4	100.0

Note: Total luminaire efficiency=29.4%.