



Full Line EC&N Catalog:
Elbows, Couplings & Nipples

We've been connecting America

Picoma is America's leading brand of steel elbows, couplings and nipples (EC&N) and a division of Zekelman Industries, the largest independent manufacturer of steel pipe and tube in North America.



North America's Best-in-class Electrical Elbows, Couplings & Nipples

for over 65 years.

Your complete EC&N package

Today, Picoma offers distributors a complete line of EMT as well as rigid steel and aluminum elbows, couplings and nipples for electrical conduit applications. With our experienced, dedicated service team, it's no surprise that Picoma has set the industry standard for decades.

The right product, right when you need it

As the industry leader, Picoma offers in-house bending, cutting and threading capabilities with the largest selection of specialty items, including special-length nipples, long-radius elbows, and custom bending and threading for unique applications. Our specialized hot-dip and in-line galvanizing processes set the benchmark for quality in the industry.

Picoma products are manufactured in Cambridge, Ohio, from conduit stock produced in-house, then further fabricated and shipped to our local warehouses across North America.

100% Made & Melted in America

Picoma's standard line of steel EC&N satisfies the strictest American Made, Made in America and Buy American legislation, so you can buy with confidence. Offering superior physical protection for electrical conductors, Picoma is your single source for all EC&N in North America.

Contractor-focused innovations

Innovation at Picoma starts with listening carefully to our customers' needs. Responsiveness to users is a priority at every level of the company, from the executive suite to the manufacturing floor.

For example, much of Picoma production equipment has been specially designed or modified by Picoma engineers to meet our own high, rigid quality standards, exceed industry standards and perform to precise customer requirements.

Responsive service, helpful technology

Our fully integrated planning systems ensure steel coils and conduit feedstock are in place and available when needed, so you can expect a quick response to spikes in demand and changes in order patterns.

Our Electronic Data Interchange (EDI) program with a vendor-managed inventory (VMI) system allows you to place your order 24/7. It speeds order entry, lets you match UPC numbers, improves order and invoice accuracy, and tells you when your order will ship. Picoma offers superior fill rates (98%) and fast order turnaround.

Strength. Innovation. Service.

We take great pride in serving our customers' needs. No job is too big for us to handle—and delivering on time is standard practice. And we continually look for opportunities to bring greater value to every customer relationship through product and process innovations.



Picoma products are listed to Underwriters Laboratories.

For more information, call **800.742.6621** or visit **picoma.com**

Electrical Metallic Tubing—Steel

ELBOWS 90° / 45°

TRADE SIZE	MIN. RADIUS	90° ELBOWS			45° ELBOWS		
		STANDARD CARTON QTY.	lbs. per ctn.	WEIGHT PER 100	STANDARD CARTON QTY.	lbs. per ctn.	WEIGHT PER 100
½	4	50	13	26	50	12	24
¾	4½	50	23	46	50	20	40
1	5¾	25	23	92	25	18	72
1¼	7¼	20	27	135	20	20	100
1½	8¼	15	30	200	15	22	147
2	9¼	10	28	280	10	21	210
2½*	10½	Bulk	—	500	Bulk	—	358
3*	13	Bulk	—	750	Bulk	—	700
3½*	15	Bulk	—	1014	Bulk	—	850
4*	16	Bulk	—	1300	Bulk	—	1000

* Trade sizes 2½ and larger shipped in palletized carton or bulk.
Standard radius elbows also available in 60, 30, 22½, 15 and 11¼.
Weights are approximate.
To estimate weights for 60, deduct 10%; for 45, deduct 15%; for 30, deduct 20%.

SPECIAL LARGE-RADIUS 90° ELBOWS†

TRADE SIZE	12" RADIUS	15" RADIUS	18" RADIUS	24" RADIUS	30" RADIUS	36" RADIUS	42" RADIUS	48" RADIUS
½	—	—	—	—	—	—	—	—
¾	—	—	—	—	—	—	—	—
1	—	—	—	—	—	—	—	—
1¼	—	—	—	5	—	—	—	—
1½	—	4	4	5	—	7	—	9
2	—	—	6	7	9	9	—	9
2½	—	—	—	11	—	13	—	—
3	—	—	—	15	15	16	—	21
3½	—	—	—	—	20	25	—	22
4	—	—	—	19	21	24	28	31

† Lbs. per piece



Tested and Listed for Safety

Our galvanized steel rigid elbows comply with the following standards: ANSI C80.1, federal specification WW-C-581 class 1 type A and UL-797, to which it is Listed.

Galvanized Rigid Conduit/IMC*

COUPLINGS

TRADE SIZE	OUTSIDE DIAMETER	UL MIN. LENGTH**	WEIGHT LBS.		STD. CTN. QTY.
			Per 100	Per ctn.	
½	1.010	1⅝	12	12	100
¾	1.250	1¼¼	18	9	50
1	1.525	1¾½	30	9	30
1¼	1.869	2¼½	37	9	25
1½	2.155	2⅞	52	13	25
2	2.650	2⅞	72	15	20
2½	3.250	3¾	170	41	24
3*	3.870	3¾	210	34	16
3½	4.500	3¾½	340	41	12
4	4.875	3¾¾	300	30	10
5	6.000	3¾¾	475	Bulk	Bulk
6	7.200	4¼	765	Bulk	Bulk

* Also for use with intermediate metal conduit (IMC).
** Maximum dimension per UL-6.

SPECIAL LARGE-RADIUS 90° ELBOWS†

TRADE SIZE	12" RADIUS	15" RADIUS	18" RADIUS	24" RADIUS	30" RADIUS	36" RADIUS	42" RADIUS	48" RADIUS	60" RADIUS
1	4	6	5	6	9	9	12	13	—
1¼	6	7	7	9	12	13	16	18	—
1½	8	9	10	11	15	16	19	21	—
2	10	10	11	14	20	22	24	26	—
2½	15	19	18	23	27	32	39	44	—
3	—	25	28	32	37	45	52	57	—
3½	—	Standard Radius	31	35	42	54	62	69	—
4	—	—	38	45	54	64	73	81	90
5	—	—	—	Standard Radius	85	94	100	120	136
6	—	—	—	—	Standard Radius	131	140	160	182

† Lbs. per piece



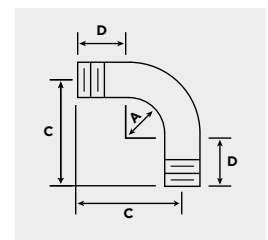
Tested and Listed for Safety

Our steel rigid elbows comply with the following standards: ANSI C80.1 and federal specification WW-C-581 class 1 type A and UL-6, to which it is Listed.

* Also for use with intermediate metal conduit (IMC).

DIMENSIONS OF SPECIAL LARGE-RADIUS 90° ELBOWS

TRADE SIZE	1-2½	1-3	1-4	1-4	1-5	1-6	1-6	1-6
When Radius "A" is	12"	15"	18"	24"	30"	36"	42"	48"
Offset "C" is	1'9"	2'0"	2'4"	2'11"	3'5"	3'11"	4'6"	5'0"
Straight End "D" is	9"	9"	10"	11"	11"	11"	12"	12"
Length Unbent is	3'0"	3'6"	4'0"	4'11"	5'9"	6'6"	7'6"	8'4"



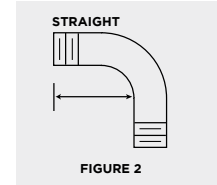
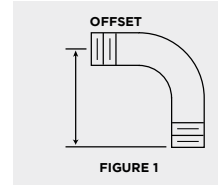
Galvanized Rigid Conduit

ELBOWS 90°



Tested and Listed for Safety
Our galvanized steel rigid elbows, couplings and nipples comply with the following standards: ANSI C80.1, federal specification WW-C-581 class 1 type A and UL-6, to which it is Listed.

TRADE SIZE	MIN. RADIUS in.	OFFSET FIG. 1	STRAIGHT FIG. 2	WEIGHT** LBS. Per 100 ft.	STANDARD CARTON QTY.
½	4	6 ¾	1 ¾	70	50
¾	4 ½	7 7/16	2 ¼	112	50
1	5 ¾	9 ½	2 ¼	192	25
1 ¼	7 ¼	11 ¾	3	320	20
1 ½	8 ¼	12 13/16	3 ¼	413	15
2	9 ½	15 ½	4	670	10
2 ½*	10 ½	19 ¼	4 ¾	1200	Bulk
3*	13	21 ½	6	1900	Bulk
3 ½*	15	24 ½	5 ½	2800	Bulk
4*	16	25 ½	5 ¾	3100	Bulk
5*	24	37 1/16	8 ¾	6800	Bulk
6*	30	49 ½	13 ¼	11400	Bulk



* Trade sizes 2 ½ and larger shipped in palletized cartons or bulk. Palletized and bulk elbows supplied with a thread protector on each end and UL label affixed.

** Minimum dimension per UL-6.

NIPPLES

LENGTH TRADE SIZE	LENGTH* (IN.)	CLOSE		1 ½"		2"		2 ½"		3"		3 ½"	
		STANDARD CARTON QTY.	WEIGHT PER 100 LBS.	STANDARD CARTON QTY.	WEIGHT PER 100 LBS.	STANDARD CARTON QTY.	WEIGHT PER 100 LBS.	STANDARD CARTON QTY.	WEIGHT PER 100 LBS.	STANDARD CARTON QTY.	WEIGHT PER 100 LBS.	STANDARD CARTON QTY.	WEIGHT PER 100 LBS.
½	1 ½	25	6	25	8	25	12	25	15	25	19	25	22
¾	1 ¾	25	9	25	9	25	14	25	19	25	24	25	28
1	1 ½	25	16	—	—	25	22	25	28	25	36	25	43
1 ¼	1 ¾	25	22	—	—	25	28	25	37	25	47	25	55
1 ½	1 ¾	25	28	—	—	25	34	25	44	25	56	25	68
2	2	25	44	—	—	—	—	25	59	25	72	25	88
2 ½	2 ½	12	84	—	—	—	—	—	—	10	100	10	120
3	2 ¾	12	118	—	—	—	—	—	—	10	130	10	157
3 ½	2 ¾	12	160	—	—	—	—	—	—	—	—	—	—
4	2 ¾	12	180	—	—	—	—	—	—	—	—	—	—
5	3	Bulk	240	—	—	—	—	—	—	—	—	—	—
6	3 ¾	Bulk	350	—	—	—	—	—	—	—	—	—	—

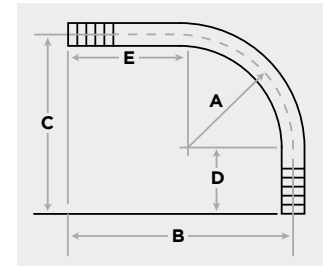
LENGTH TRADE SIZE	4"		5"		6"		8"		10"		12"	
	STANDARD CARTON QTY.	WEIGHT PER 100 LBS.	STANDARD CARTON QTY.	WEIGHT PER 100 LBS.	STANDARD CARTON QTY.	WEIGHT PER 100 LBS.	STANDARD CARTON QTY.	WEIGHT PER 100 LBS.	STANDARD CARTON QTY.	WEIGHT PER 100 LBS.	STANDARD CARTON QTY.	WEIGHT PER 100 LBS.
½	25	26	25	33	25	40	25	54	25	68	25	82
¾	25	34	25	43	25	52	25	73	25	89	25	109
1	25	49	25	64	25	78	25	109	25	138	25	166
1 ¼	25	66	25	84	25	100	12	136	12	176	12	216
1 ½	25	80	25	103	25	122	12	170	12	216	12	260
2	25	103	25	132	25	160	12	220	12	285	12	335
2 ½	10	150	12	197	12	240	5	329	5	422	5	505
3	10	200	10	260	10	300	5	411	5	528	5	630
3 ½	10	240	10	320	5	373	5	510	5	655	5	785
4	10	285	10	380	5	440	5	600	5	775	5	925
5	—	—	Bulk	480	Bulk	600	Bulk	825	Bulk	1055	Bulk	1260
6	—	—	Bulk	660	Bulk	820	Bulk	1125	Bulk	1440	Bulk	1720

* Length reference is for close nipples only. Prices are available upon request for nipples in lengths longer than 12" or with special threading requirements.

Galvanized Rigid Conduit

YARD-LIGHT ELBOWS

TRADE SIZE	PIECES	WEIGHT*			DIMENSIONS				
		Per ctn.	Per 100	Per ctn.	A	B	C	D	E
½	50	150	38	4	18	6 ⅜	2 ⅜	14	
¾	40	202	51	4 ½	18	6 ¾	2 ¼	13 ½	
1	25	316	79	5 ¾	18	8 ⅝	2 ⅞	12 ¼	
1¼	10	477	48	7 ¼	19 ¼	10 ¼	3 ¼	12 ¼	
1½	Bulk	609	—	8 ¼	20 ½	11 ⅝	3 ⅝	12 ¼	
2	Bulk	911	—	9 ½	21 ½	14 ½	5	12	
2½	Bulk	1530	—	10 ½	22 ½	16	5 ½	12	
3	Bulk	2279	—	13	25	19 ¼	6 ¼	12	
3½	Bulk	3082	—	15	27	22 ¾	7 ¾	12	
4	Bulk	3799	—	16	28	24	8	12	



Tested and Listed for Safety
 Our galvanized steel rigid elbows, couplings and nipples comply with the following standards: ANSI C80.1, federal specification WW-C-581 class 1 type A and UL-6, to which it is Listed.



Aluminum Rigid Conduit

COUPLINGS

TRADE SIZE	OUTSIDE DIAMETER	LENGTH*	WEIGHT*		STANDARD CARTON QTY.
			Per 100	Per ctn.	
½	1.078	1 ⅛	6	6	100
¾	1.328	1 ⅝	9	5	50
1	1.562	2	13	4	30
1¼	1.953	2 ⅛	19	5	25
1½	2.219	2 ¼	23	6	25
2	2.750	2 ⅝	35	7	20
2½	3.281	3 ⅜	68	16	24
3	3.812	3 ¾	91	15	16
3½	4.438	3 ⅞	108	13	12
4	5.000	3 ½	142	14	10
5	6.219	3 ¾	242	—	Bulk
6	7.312	4	320	—	Bulk

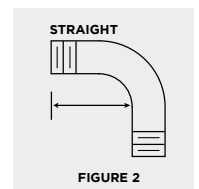
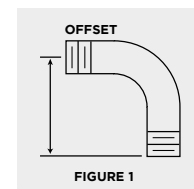
*Minimum dimension per manufacturing standard UL-6A.

Tested and Certified for Safety
 Our aluminum rigid elbows, couplings and nipples comply with the following standards: UL 6A, ANSI C80.5, federal specification WW-C-540c and UL-6, to which it is Listed.



ELBOWS 90°

TRADE SIZE	RADIUS**	OFFSET	STRAIGHT	WEIGHT*		STANDARD CARTON QTY.
				Per 100	Per ctn.	
½	4	6 ⅝	1 ½	26	13	50
¾	4 ½	7 ⅞	1 ½	40	20	50
1	5 ¾	9 ½	1 ⅞	72	18	25
1¼	7 ¼	11 ⅝	2	105	21	20
1½	8 ¼	12 ⅜	2	153	23	15
2	9 ½	15 ½	2	210	Bulk	Bulk
2½*	10 ½	19 ¼	3	500	Bulk	Bulk
3*	13	21 ½	3 ⅝	800	Bulk	Bulk
3½*	15	24 ½	3 ¾	900	Bulk	Bulk
4*	16	25 ½	3 ⅞	1200	Bulk	Bulk
5*	24	37 ⅞	3 ⅞	2400	Bulk	Bulk
6*	30	49 ½	3 ¾	3800	Bulk	Bulk



* Trade sizes 2½ and larger shipped in palletized cartons or bulk. Palletized and bulk elbows supplied with a thread protector on each end and UL label affixed.

** Minimum dimension per UL-6A.

Aluminum Rigid Conduit

SPECIAL LARGE-RADIUS 90° ELBOWS*

TRADE SIZE	12" RADIUS	15" RADIUS	18" RADIUS	24" RADIUS	30" RADIUS	36" RADIUS	42" RADIUS	48" RADIUS
1	1	2	2	3	4	4	4	5
1¼	2	3	3	3	5	5	6	6
1½	3	3	4	4	6	6	7	8
2	4	3	4	5	8	8	9	10
2½	6	7	6	8	12	12	14	16
3	—	9	10	11	13	16	18	21
3½	—	Standard Radius	11	14	18	19	22	25
4	—	Standard Radius	14	16	21	23	26	29
5	—	—	—	Standard Radius	29	34	37	44
6	—	—	—	—	Standard Radius	42	49	58

* Lbs. per piece

NIPPLES*

TRADE SIZE	LENGTH* (IN.)	CLOSE		1½"		2"		2½"		3"		3½"		4"	
		PACK QTY.	WT. PER 100	STD. CARTON	WT. PER 100	STD. CARTON	WT. PER 100	STD. CARTON	WT. PER 100	STD. CARTON	WT. PER 100	STD. CARTON	WT. PER 100	STD. CARTON	WT. PER 100
½	1½	25	2	25	3	25	4	25	5	25	7	25	8	25	9
¾	1¾	25	3	25	3	25	5	25	7	25	8	25	10	25	12
1	1½	25	4	—	—	25	7	25	8	25	12	25	14	25	16
1¼	1¾	25	7	—	—	25	10	25	13	25	16	25	20	25	23
1½	1¾	25	10	—	—	25	12	25	16	25	20	25	24	25	28
2	2	25	16	—	—	—	—	25	22	25	27	25	32	25	38
2½	2½	12	22	—	—	—	—	—	—	10	30	10	39	10	47
3	2¾	12	24	—	—	—	—	—	—	10	42	10	53	10	64
3½	2¾	12	42	—	—	—	—	—	—	—	—	—	—	10	75
4	2¾	12	51	—	—	—	—	—	—	—	—	—	—	10	87
5	3	Bulk	71	—	—	—	—	—	—	—	—	—	—	—	—
6	3¾	Bulk	105	—	—	—	—	—	—	—	—	—	—	—	—

TRADE SIZE	5"		6"		8"		10"		12"	
	STD. CARTON	WT. PER 100	STD. CARTON	WT. PER 100	STD. CARTON	WT. PER 100	STD. CARTON	WT. PER 100	STD. CARTON	WT. PER 100
½	25	12	25	14	25	19	25	24	25	29
¾	25	15	25	18	25	25	25	31	25	38
1	25	21	25	26	25	36	25	45	25	55
1¼	25	29	25	36	12	49	12	62	12	75
1½	25	36	25	44	12	59	12	74	12	90
2	25	48	25	58	12	78	12	100	12	120
2½	12	64	12	80	5	114	5	148	5	180
3	10	86	10	108	5	152	5	196	5	240
3½	10	101	5	128	5	180	5	234	5	286
4	10	118	5	149	5	212	5	274	5	336
5	Bulk	155	Bulk	197	Bulk	281	Bulk	366	Bulk	450
6	Bulk	208	Bulk	263	Bulk	372	Bulk	481	Bulk	591

*Length reference is for close nipples only.
All dimensions provided are for descriptive purposes only.



Tested and Listed for Safety
Our aluminum rigid elbows, couplings and nipples comply with the following standards: ANSI C80.5, federal specification WW-C-540c and UL-6A, to which it is Listed.



9208 Jeffrey Drive
Cambridge, OH 43725

800.742.6621
info@picoma.com
picoma.com



Corporate Office

227 West Monroe Street
26th Floor
Chicago, IL 60606

312.275.1600
info@zekelman.com
zekelman.com

About Picoma

Picoma Industries, a division of Zekelman Industries, manufactures a complete line of electrical conduit fittings — galvanized elbows, couplings and nipples — and a complete EC&N package of aluminum, running thread and service meter masts.

For more information, contact Picoma at:

800.742.6621 or **info@picoma.com**

Or, visit our website at picoma.com

About Zekelman Industries

Zekelman Industries includes the operating divisions of Atlas Tube, Energex Tube, Sharon Tube, Picoma and Wheatland Tube. It is the largest independent manufacturer of hollow structural sections (HSS) and steel pipe, and the top producer of electrical conduit and elbows, couplings and nipples in North America. Zekelman Industries delivers a broad range of pipe and tube solutions that build its customers' success.