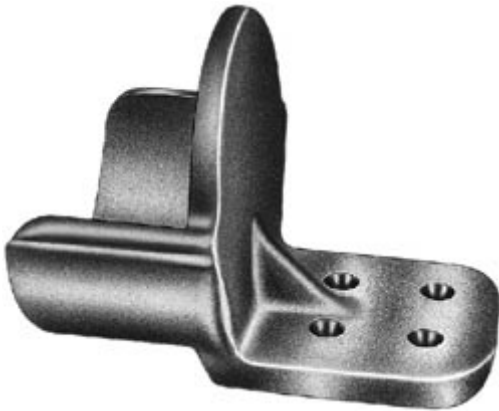




**Product Datasheet**

**ANDERSON FARGO**

**WSTF06B2 -- Terminal, Aluminum Weldment**



Terminal, Aluminum Weldment, Tube to Flat, tube size 3/4 IPS Pad: 2 hole, 2 in

**Product Specifications**

Family Image



Terminals

Terminals



WSTF Series  
Tube to Flat  
Aluminum Weldment Terminals

PDF Catalog Page

[Click HERE to view the web page.](#)

Pad Holes

2

Pad Width

2 in

Pad Position

Sideformed

Dimension A

3.25 in (82.6 mm)

Dimension B

2.50 in (63.5 mm)

Dimension C

1.50 in (38.1 mm)

Dimension K

0.63 in (15.9 mm)

Dimension L

6 in (152.4 mm)

Dimension T

0.38 in (9.53 mm)

Dimension W

2 in (50.8 mm)

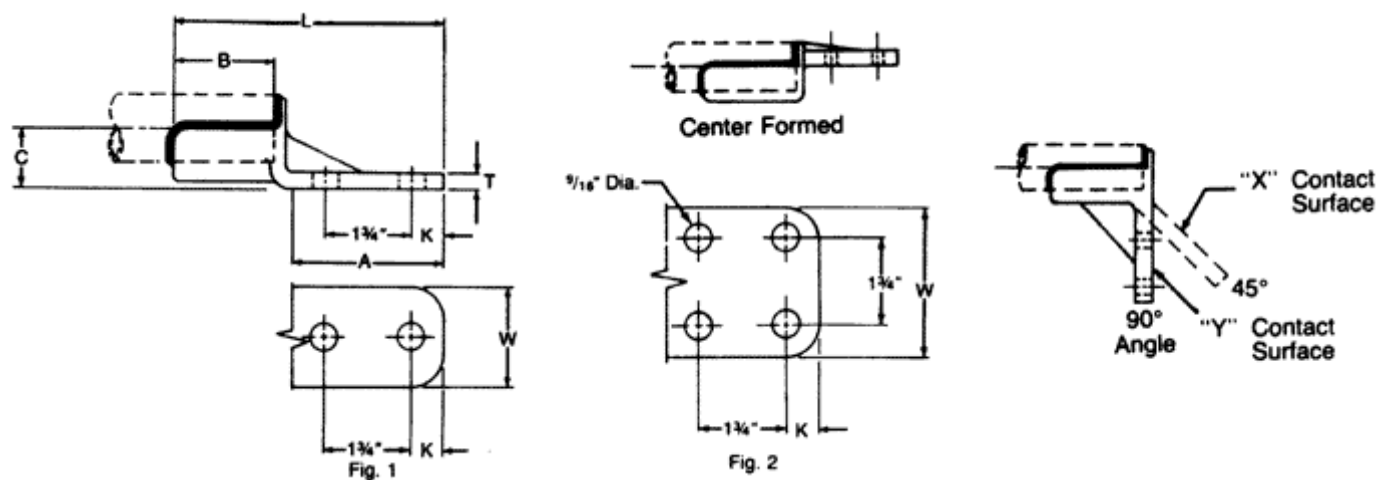
<b>Material Type</b>	Non-Standard
<b>UPC Code</b>	09635934178
<b>Standard Package</b>	1
<b>Standard Package Unit</b>	Each
<b>Min Order Qty</b>	1
<b>Weight / Ea.</b>	0.49 lbs

### Notes

45 or 90 degree angle terminal may be specified by adding X45 or Y90 suffix to catalog number.

### Compressed Product Number

WSTF06B2



[Catalog Home](#)



[Warranty Info](#) | [Trademarks](#) | [Terms of Use](#)

All contents Copyright © 2007 Hubbell Power Systems, Inc. All rights reserved.

NOTE: Because Hubbell has a policy of continuous product improvement, we reserve the right to change design and specifications without notice.