

## TYPE CGBL

### Features

- Lay-in feature
- Manufactured from high strength copper
- Stainless steel hardware

### Benefits

- Provides ease of installation of continuous loop grounding conductor
- Suitable for direct burial and for use with copper conductors
- Resists oxidation and corrosion in earth or concrete

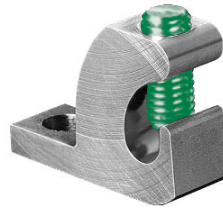
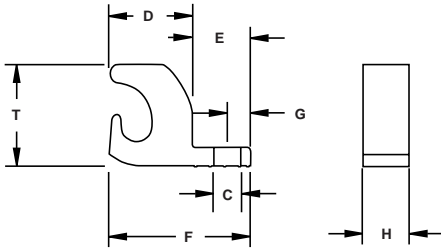


Fig. 1



Fig. 2

Catalog Number	Figure Number	Ground Wire Range	Bolt Size	Dimensions							Screw Type
				C	D	E	F	G	H	T	
GBL-4DB	1	4-14	10	.218	.680	.470	1.150	.190	.375	.825	Slot
GBL-4DB-14	1	4-14	1/4	.265	.680	.470	1.150	.210	.472	.825	Slot
*+ GBL-4DBT	1	4-14	10	.218	.680	.470	1.150	.190	.375	.825	Slot
* GBL-4DBT-14	1	4-14	1/4	.265	.680	.470	1.150	.210	.472	.825	Slot
*+ GBL-4DBTH	2	4-14	10	.218	.680	.470	1.150	.190	.375	.825	Hex
* GBL-4DBTH-14	2	4-14	1/4	.265	.680	.470	1.150	.210	.472	.825	Hex

All wire sizes, unless noted otherwise, are American Wire Gauge (AWG)  
Tested to UL 467, UL File E34440

\* T indicates tin plating

+ GBL-4DBT and GBL-4DBTH are UL2703 Listed UL E354420 Vol. 2

Optional MH Series mounting hardware kits available, consult ILSCO

## TYPE CGBL

### Features

- Lay-in feature
- Manufactured from high strength copper
- Stainless steel hardware

### Benefits

- Provides ease of installation of continuous loop grounding conductor
- Suitable for direct burial and for use with copper conductors
- Resists oxidation and corrosion in earth or concrete

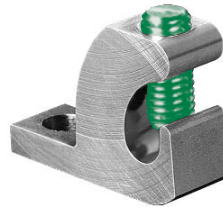
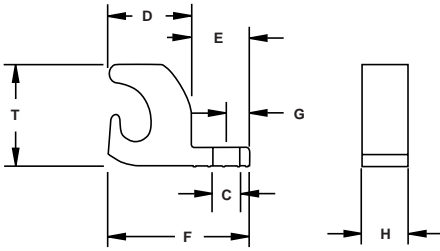


Fig. 1



Fig. 2

Catalog Number	Figure Number	Ground Wire Range	Bolt Size	Dimensions							Screw Type
				C	D	E	F	G	H	T	
GBL-4DB	1	4-14	10	.218	.680	.470	1.150	.190	.375	.825	Slot
GBL-4DB-14	1	4-14	1/4	.265	.680	.470	1.150	.210	.472	.825	Slot
*+ GBL-4DBT	1	4-14	10	.218	.680	.470	1.150	.190	.375	.825	Slot
* GBL-4DBT-14	1	4-14	1/4	.265	.680	.470	1.150	.210	.472	.825	Slot
*+ GBL-4DBTH	2	4-14	10	.218	.680	.470	1.150	.190	.375	.825	Hex
* GBL-4DBTH-14	2	4-14	1/4	.265	.680	.470	1.150	.210	.472	.825	Hex

All wire sizes, unless noted otherwise, are American Wire Gauge (AWG)

Tested to UL 467, UL File E34440

\* T indicates tin plating

+ GBL-4DBT and GBL-4DBTH are UL2703 Listed UL E354420 Vol. 2

Optional MH Series mounting hardware kits available, consult ILSCO