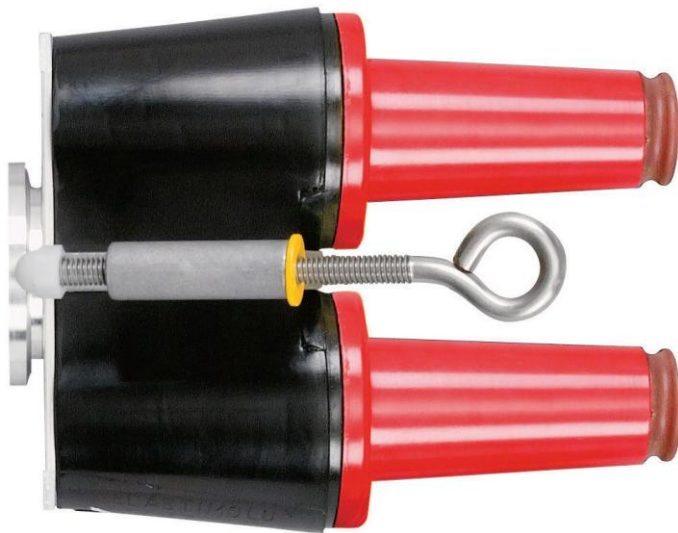


15kV	200A Loadbreak Feed-Thru	164FT
------	--------------------------	-------



Note: Red PBT Interface Shield available soon

Features:

- 15kV, 200 Amp Loadbreak Rated
- Uses integral parking stand mount
- Provide extra tap for elbow arrester connection
- Peroxide-cured insulation and jacket
- Optional accessories allow by-pass, isolation, testing, and grounding

164FT Loadbreak Feed-Thru

Applications:

The Elastimold® 164FT feed-thru is a fully shielded, fully submersible insulated connector designed for energized operation. It is suitable for use on 15kV class loadbreak systems. When used in conjunction with 15kV class elbow connectors, the 164FT provides the circuit with the loadbreak junction point. Testing and grounding of the circuit is accomplished when the 164FT is used in conjunction with the 370TR and 160GLR. When used in conjunction with a 160DR, the 164FT can be used to isolate and "dead-end" the circuit. The 164FT is designed to mate with the following Elastimold® products:

- 15kV Family of Elbow Connectors
- 370TR test rod
- 160GLR grounding elbow
- 160DR/DRG insulated cap

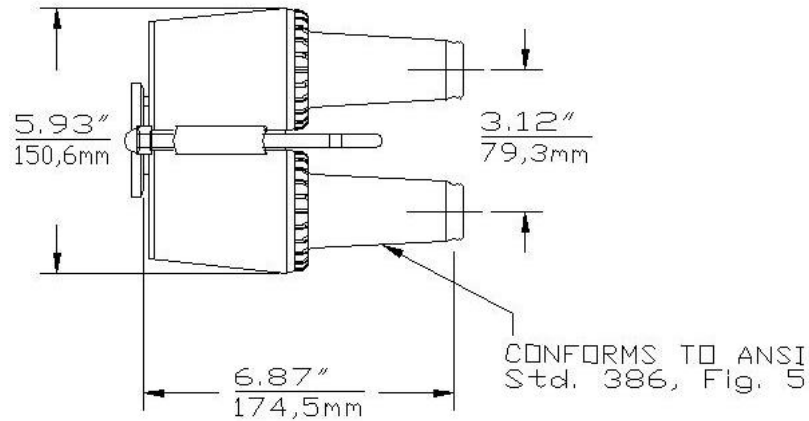
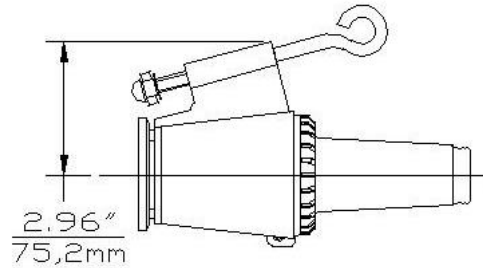
Ratings:

Meets ANSI/IEEE Standard 386, Latest Revision

For 15kV Voltage Class:

8.3kV Max Phase-to-Ground – Operating Voltage
 14.4kV Max Phase-to-Phase
 95kV BIL – Impulse Withstand (1.2 x 50 microsecond wave)
 34kV AC – One minute withstand
 53kV DC – 15 minutes withstand
 11kV AC – Corona Extinction @ 3pC sensitivity
 200 Amp – Continuous and Loadbreak
 10kA Sym – 10 Cycles Momentary & Fault Close

15kV	200A Loadbreak Feed-Thru	164FT
------	--------------------------	-------



Ordering Instructions:

To order, specify number **164FT** feed-thru.

Each kit contains the following:

1	Feed-thru body	164FT
2	Protective shipping cap	1601-APC-1
2	Lubricant	82-08
1	Installation Instruction	IS-0376