

**Issue Date:** 10/29/2012

**Page:** 1 of 2

**File:** PSS-K650J3

15/25kV	600A Deadbreak 3-Way Junction	K650J3
---------	-------------------------------	--------



## Features:

- 15/25kV, 600 Amp Deadbreak 3-Way Junction
- Fully shielded, fully submersible molded rubber housing
- 100% peroxide-cured construction includes insulation and conductive EPDM materials
- Provides mating for Elastimold® 600 A Series Elbow connectors
- Stainless Steel Mounting Bracket

## K650J3 Deadbreak 3-Way Junction

### Applications:

ELASTIMOLD® junctions are designed for subsurface, vault or padmount applications and can be used for sectionalizing, looping, tapping, and equipment bypass. Junctions are designed to mate with other ELASTIMOLD® products including:

- K655 Elbow Connector
- K655BE Bushing Extender
- 655BEA3 Bushing Adapter

ELASTIMOLD® junctions are equipped with a stainless steel mounting bracket and back plate suitable for mounting on a flat surface.

### Ratings:

Meets ANSI/IEEE Standard 386, Latest Revision

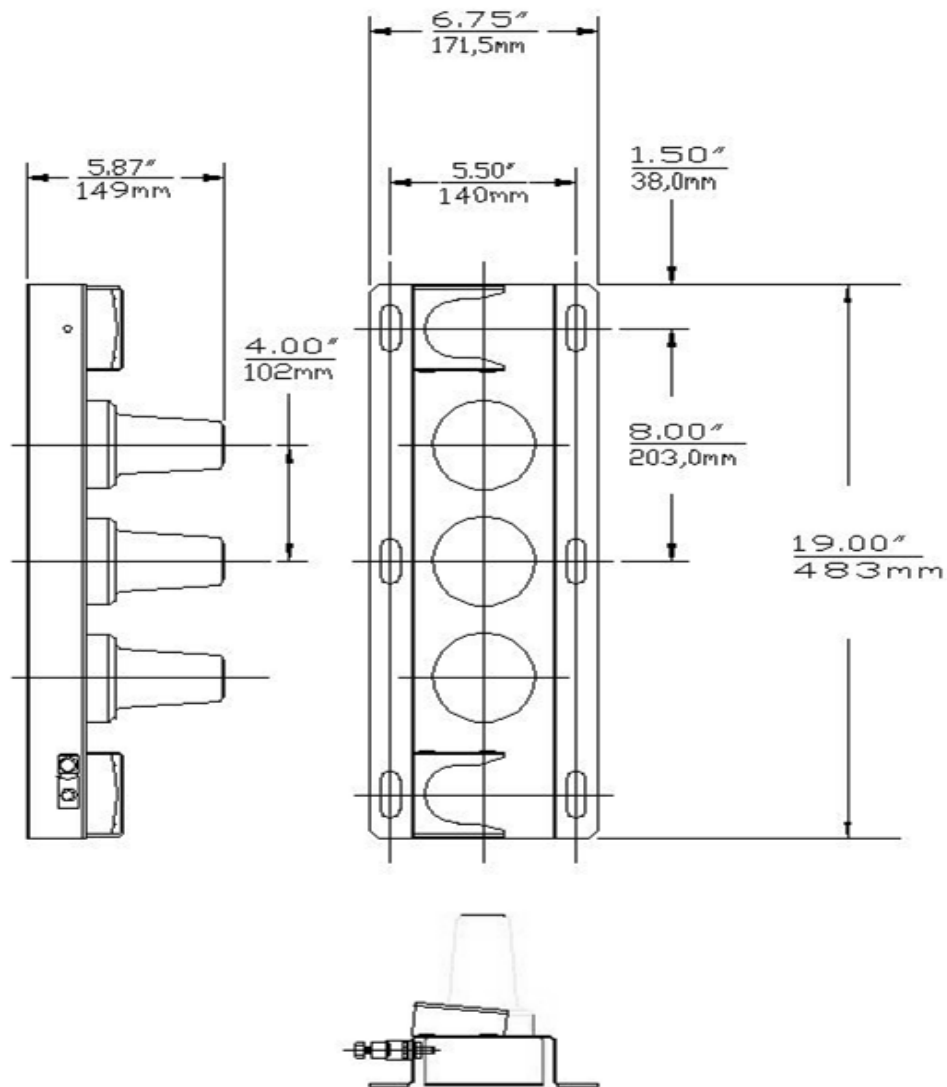
#### For 15kV Voltage Class:

8.3kV Max Phase-to-Ground – Operating Voltage  
 14.4kV Max Phase-to-Phase  
 95kV BIL – Impulse Withstand (1.2 x 50 microsecond wave)  
 34kV AC – One minute withstand  
 53kV DC – 15 minutes withstand  
 11kV AC – Corona Extinction @ 3pC sensitivity  
 600 Amp – Continuous  
 25kA Sym – 10 Cycles Momentary

#### For 28kV Voltage Class:

16.2kV Max Phase-to-Ground – Operating Voltage  
 28kV Max Phase-to-Phase  
 140kV BIL – Impulse Withstand (1.2 x 50 microsecond wave)  
 45kV AC – One minute withstand  
 84kV DC – 15 minutes withstand  
 21.5kV AC – Corona Extinction @ 3pC sensitivity  
 600 Amp – Continuous  
 25kA Sym – 10 Cycles Momentary

15/25kV	600A Deadbreak 3-Way Junction	K650J3
---------	-------------------------------	--------



## Ordering Instructions:

### Each kit contains the following:

1	Basic molded junction	K650J3
1	Mounting Hardware	600J3-6
2	Tube, lubricant	82-08
1	Installation instruction	IS-0207
3	Protective Cap	650PPC-01

Specify **K650J3** for 15/25kV, 600 Amp, 3-way Deadbreak Junction.

Add "-5" at the end of the catalog number for Junctions with "U" style mounting straps only.

Add "-6" at the end of the catalog number for mounting bracket and back plate only.