

## Hazardous Location Fittings

### Reducers, Plugs and Adapters

#### Application

- RE and REC reducers are used in threaded heavy wall conduit systems
- RE reduces conduit hubs to a smaller size
- REC connects two different sizes of conduit together or is used to replace a coupling and reducer in an installation
- PLG plugs are used for closing threaded conduit hubs



#### Features

- All Hubs have NPT threads with a minimum of five full threads and integral bushing for preventing damage to wires

#### Materials

Machined Reducers: Steel  
 Cast Reducers: Gray Iron  
 Funnel Reducers: Iron  
 Recessed Plugs: Gray Iron  
 Red•Dot® Recessed Plugs:  
 Copper-free aluminum

#### Listings/Compliances

UL: 886  
 CSA: C22.2 No.30  
 Cl. I, Div. 1 & 2, Groups A, B, C, D  
 Cl. II, Div. 1, Groups E, F, G  
 Cl. III, Div. 1 & 2  
 Explosion-Proof  
 Dust-Ignition-Proof  
 For hazardous and non-hazardous locations

#### Standard Finishes

Cast zinc plated with aluminum acrylic paint  
 Machine zinc plated with clear chromate finish

### Recessed Plugs



CAT. NO.	THREADS (NPT)
<i>With Flush Head for Hazardous and Non-Hazardous Locations</i>	
PLG1-TB	1/2
PLG2-TB	3/4
PLG3-TB	1
PLG4-TB	1 1/4
PLG5-TB	1 1/2
PLG6-TB	2
PLG7-TB	2 1/2
PLG8-TB	3
PLG9-TB	3 1/2
PLG10-TB	4

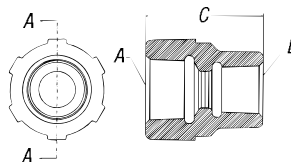
### Reducing Bushings



CAT. NO.	A MALE (NPT)	B FEMALE (NPT)
RE21-TB	3/4	1/2
RE31-TB	1	1/2
RE32-TB	1	3/4
RE41-TB	1 1/4	1/2
RE42-TB	1 1/4	3/4
RE43-TB	1 1/4	1
RE51-TB	1 1/2	1/2
RE52-TB	1 1/2	3/4
RE53-TB	1 1/2	1
RE54-TB	1 1/2	1 1/4
RE61-TB	2	1/2
RE62-TB	2	3/4
RE63-TB	2	1
RE64-TB	2	1 1/4
RE65-TB	2	1 1/2

CAT. NO.	A MALE (NPT)	B FEMALE (NPT)
RE73-TB	2 1/2	1
RE74-TB	2 1/2	1 1/4
RE75-TB	2 1/2	1 1/2
RE76-TB	2 1/2	2
RE83-TB	3	1
RE84-TB	3	1 1/4
RE85-TB	3	1 1/2
RE86-TB	3	2
RE87-TB	3	2 1/2
RE96-TB	3 1/2	2
RE97-TB	3 1/2	2 1/2
RE98-TB	3 1/2	3
RE106-TB	4	2
RE107-TB	4	2 1/2
RE108-TB	4	3

### REC Series Reducers



CAT. NO.	A (NPT)	B (NPT)	C
<i>Funnel-Shaped Reducers for Hazardous and Non-Hazardous Locations</i>			
REC21-TB	3/4	1/2 - 14	1 1/8
REC31-TB	1	1/2 - 14	2
REC32-TB	1	3/4 - 14	2

### Aluminum Recessed Plugs



CAT. NO.	HUB SIZE
<i>With Flush Head for Hazardous and Non-Hazardous Locations</i>	
XPLG-1†	1/2"
XPLG-2†	3/4"
XPLG-3†	1"
XPLG-4*	1 1/4"
XPLG-5*	1 1/2"
XPLG-6*	2"

*Made-to-order items. Consult factory for lead time and minimum quantities.*

† Not UL Listed and not approved for use in hazardous locations.

\* UL Listed E-34438