



Product Datasheet



ANDERSON FARGO

SA10513 -- Socket Eye



Socket Eye, Ductile Iron, Eye: 1.063" with 0.813" Hole, UTS 30,000 lb; For use with ANSI class 52-3 & 52-5 insulators.

Product Specifications

<p>Hardware Family</p>	 <p>Socket Eye & Socket Clevis</p> <p>Coupling Fittings</p>
<p>Socket Fittings</p>	 <p>SA Series Socket-Eye Coupling Fittings</p>
<p>PDF Catalog Page</p>	<p>Click HERE to view the web page.</p>
<p>Ultimate Strength</p>	<p>30,000 lb (13,608 kg)</p>
<p>Coupling Length</p>	<p>2.063 in (52.40 mm)</p>
<p>Eye Width</p>	<p>1.063 in (26.99 mm)</p>

Eye Hole Diameter	0.813 in (20.64 mm)
Dimension R	0.813 in (20.64 mm)
Dimension W	1.063 in (26.99 mm)
Material	Ductile Iron
Cotter Pin Material	Stainless Steel
Material Type	Non-Standard
UPC Code	09635932466
Standard Package	1
Standard Package Unit	Each
Min Order Qty	1
Weight / Ea.	1.274 lbs

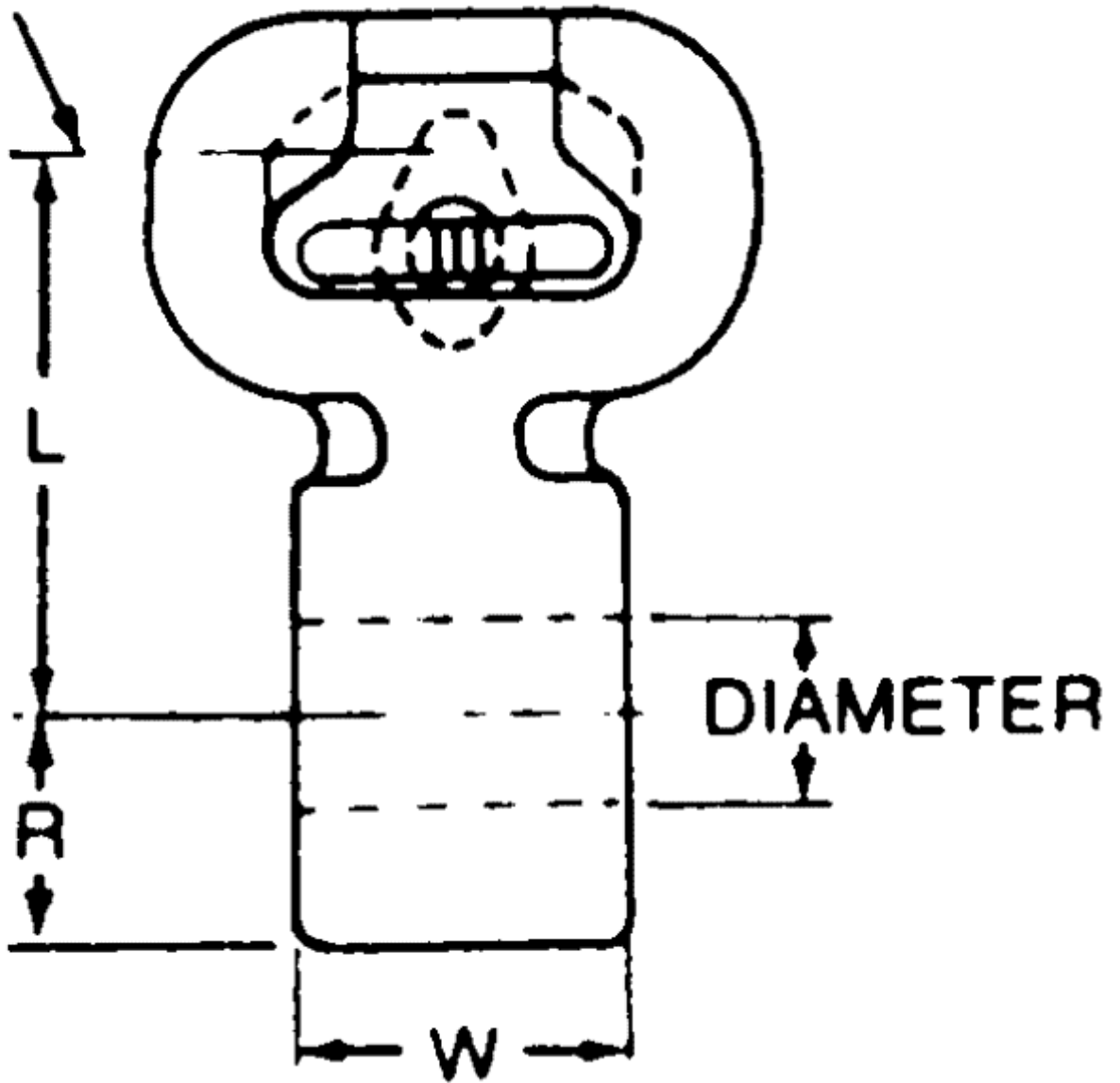
Notes

For use with ANSI class 52-3 & 52-5 insulators.

Compressed Product Number

SA10513

Ø BALL



[Catalog Home](#)



[Warranty Info](#) | [Trademarks](#) | [Terms of Use](#)

All contents Copyright © 2007 Hubbell Power Systems, Inc. All rights reserved.

NOTE: Because Hubbell has a policy of continuous product improvement, we reserve the right to change design and specifications without notice.