

## Pre-Fab Components and Assemblies

### Faster Installation for Increased Profit Margin!

#### Pre-Assemblies

Paying to assemble outlet boxes, grounding pigtails, device covers and mounting brackets on the job site can quickly become an expensive proposition. Instead, choose Steel City® Pre-Assemblies and realize significant labor savings. This UL Listed product line includes over 75 combinations of popular boxes, brackets and covers that speed installation because the time-consuming assembly work is already done for you.

#### Steel City® Pre-Assemblies include:

- Outlet box with pre-installed grounding pigtail
- Your choice of cover options, including single- and double-device covers, raised 1/2", 5/8" or 3/4"
- Your choice of bracket options to allow mounting to steel and wood stud or floor track, including Steel City® Box Support Covers, which combine a bracket and cover in one component
- All UL Listed components



### Box with Pre-Installed 10½" Pigtail

- Popular 4" square boxes and switch boxes
- Pre-installed 10½" insulated grounding pigtails
- Save on labor costs by eliminating multiple installation steps



#### Pre-Assembled Installation **VS.** Standard Installation

1. Install box in desired location — **DONE!**

1. Purchase pre-stripped pigtail
2. Install pigtail and ground screw in box
3. Install box in desired location



CAT. NO.	BOX TYPE INCLUDED	KNOCKOUTS	PRE-INSTALLED PIGTAIL	STD. CTN.
521511234EWP	52151234EW — 4"-sq. x 1½" D Welded Box	Eccentric	10½"	50
521511234P	521511234 — 4"-sq. x 1½" D Drawn Box	½" & ¾"	10½"	50
521711234EP	521711234E — 4"-sq. x 2½" D Welded Box	½" & ¾" Eccentric	10½"	50
52151XP	52151X — 4"-sq. x 1½" D Welded Box	½" & ¾" Eccentric	10½"	50
52151CVNP	52151CVN — 4"-sq. x 1½" D Welded Box	½" & ¾" Eccentric	10½"	25
LXWOWP	LXWOW-25 — 3"H x 2"W x 2½" D Gangable Switch Box	½"	10½"	25
LXVP	LXV-25 — 3"H x 2"W x 2½" D Gangable Switch Box	½"	10½"	25
CXWOWP	CXWOW — 3"H x 2"W x 3½" D Gangable Switch Box	½" & ¾"	10½"	25
CXWVP	CXWV — 3"H x 2"W x 3½" D Gangable Switch Box	½" & ¾"	10½"	25
CXP	CX — 3"H x 2"W x 3½" D Gangable Switch Box	½" & ¾"	10½"	25

## Pre-Fab Components and Assemblies

### Box with Pre-Installed 10½" Pigtail and Box Support Cover

- 52CM and 52CMD box support covers
- 10½" insulated pigtail
- One- and two-device covers
- Raised ½", ⅝" and ¾"
- 1½" and 2⅞" box depths



52171-CM14-5/8



Boxes & Covers — Steel City® Metallic Boxes

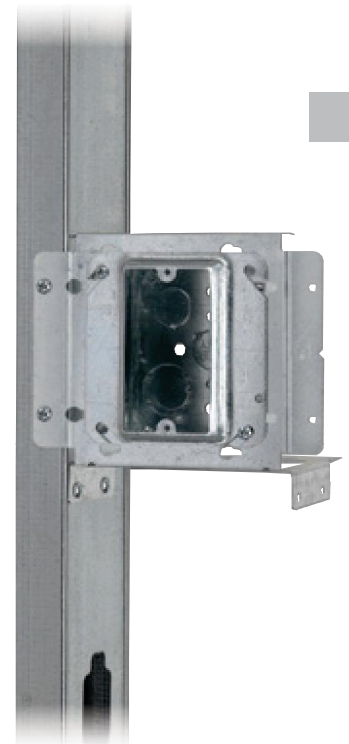
CAT. NO.	BOX TYPE INCLUDED	BOX DEPTH (IN.)	PIGTAIL TYPE INCLUDED	BOX SUPPORT COVER INCLUDED	RAISED (IN.)	NO. OF DEVICES	STD. CTN.
52151-CM13	521511234EW	1½	GSC12	52CM13	½	1	25
52151-CM14-5/8	521511234EW	1½	GSC12	52CM14-5/8	⅝	1	25
52151-CM14	521511234EW	1½	GSC12	52CM14	¾	1	25
52151-CMD17	521511234EW	1½	GSC12	52CMD17	½	2	25
52151-CMD18-5/8	521511234EW	1½	GSC12	52CMD18-5/8	⅝	2	25
52151-CMD18	521511234EW	1½	GSC12	52CMD18	¾	2	25
52171-CM13	521711234E	2⅞	GSC12	52CM13	½	1	25
52171-CM14-5/8	521711234E	2⅞	GSC12	52CM14-5/8	⅝	1	25
52171-CM14	521711234E	2⅞	GSC12	52CM14	¾	1	25
52171-CMD17	521711234E	2⅞	GSC12	52CMD17	½	2	25
52171-CMD18-5/8	521711234E	2⅞	GSC12	52CMD18-5/8	⅝	2	25
52171-CMD18	521711234E	2⅞	GSC12	52CMD18	¾	2	25

### Box with Pre-Installed 10½" Pigtail, Raised Cover and Box-to-Stud Bracket

- SSF-SH2346 bracket
- 10½" insulated pigtail
- One- and two-device covers
- Raised ½", ⅝" and ¾"
- 1½" and 2⅞" box depths



151-SH2346-13

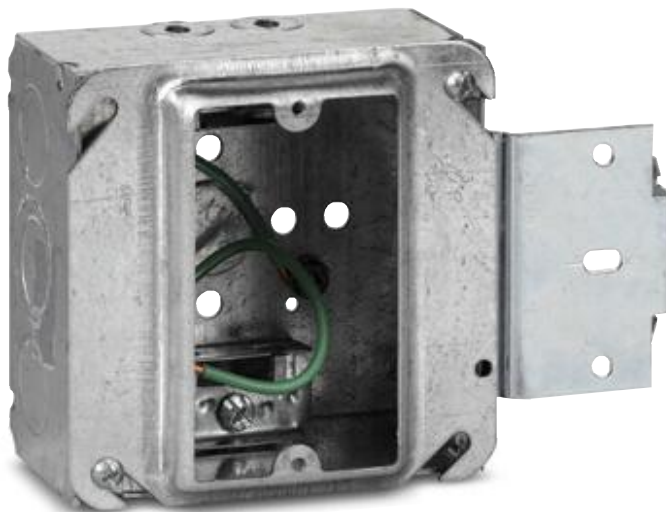


CAT. NO.	BOX TYPE INCLUDED	BOX DEPTH (IN.)	PIGTAIL TYPE INCLUDED	BRACKET TYPE INCLUDED	COVER TYPE INCLUDED	RAISED (IN.)	NO. OF DEVICES	STD. CTN.
151-SH2346-13	521511234EW	1½	GSC12	SSF-SH2346	52-C-13	½	1	10
151-SH2346-1458	521511234EW	1½	GSC12	SSF-SH2346	52-C-14-5/8	⅝	1	10
151-SH2346-14	521511234EW	1½	GSC12	SSF-SH2346	52-C-14	¾	1	10
151-SH2346-17	521511234EW	1½	GSC12	SSF-SH2346	52-C-17-25	½	2	10
151-SH2346-1858	521511234EW	1½	GSC12	SSF-SH2346	52-C-18-5/8-25	⅝	2	10
151-SH2346-18	521511234EW	1½	GSC12	SSF-SH2346	52-C-18	¾	2	10
171-SH2346-13	521711234E	2⅞	GSC12	SSF-SH2346	52-C-13	½	1	10
171-SH2346-1458	521711234E	2⅞	GSC12	SSF-SH2346	52-C-14-5/8	⅝	1	10
171-SH2346-14	521711234E	2⅞	GSC12	SSF-SH2346	52-C-14	¾	1	10
171-SH2346-17	521711234E	2⅞	GSC12	SSF-SH2346	52-C-17-25	½	2	10
171-SH2346-1858	521711234E	2⅞	GSC12	SSF-SH2346	52-C-18-5/8-25	⅝	2	10
171-SH2346-18	521711234E	2⅞	GSC12	SSF-SH2346	52-C-18	¾	2	10

## Pre-Fab Components and Assemblies

### MS Series Pre-Assemblies

- 4" square and 4<sup>1</sup>/<sub>6</sub>" square boxes
- 1<sup>1</sup>/<sub>2</sub>" deep or 2<sup>1</sup>/<sub>8</sub>" deep
- Pre-installed 10<sup>1</sup>/<sub>2</sub>" insulated pigtail
- Available with conduit KOs or clamps for flexible/armored/MC cable
- Save on labor costs by eliminating multiple installation steps



### Pre-Assembled Installation **VS.** Standard Installation

<ol style="list-style-type: none"> <li>1. Snap box — DONE!</li> </ol>	<ol style="list-style-type: none"> <li>1. Purchase pre-stripped pigtail</li> <li>2. Install pigtail and ground screw in box</li> <li>3. Mount box support cover to box</li> <li>4. Mount assembly to stud</li> </ol>
---	--

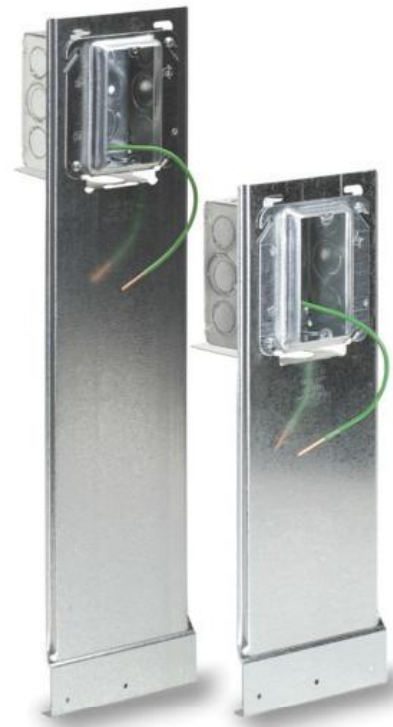


CAT. NO.	BOX TYPE INCLUDED	BOX DEPTH (IN.)	PIGTAIL INCLUDED (IN.)	BOX COVER INCLUDED	RAISED (IN.)	NO. OF DEVICES	STD. CTN.
151-MS-13	52151-MS-1/2 3/4	1 <sup>1</sup> / <sub>2</sub>	10 <sup>1</sup> / <sub>2</sub>	52-C-13	1/2	1	25
151-MS-14	52151-MS-1/2 3/4	1 <sup>1</sup> / <sub>2</sub>	10 <sup>1</sup> / <sub>2</sub>	52-C-14	3/4	1	25
151-MS-1458	52151-MS-1/2 3/4	1 <sup>1</sup> / <sub>2</sub>	10 <sup>1</sup> / <sub>2</sub>	52-C-14-5/8	5/8	1	25
171MS13	52171-MS-1/2 3/4	2 <sup>1</sup> / <sub>2</sub>	10 <sup>1</sup> / <sub>2</sub>	52-C-13	1/2	1	25
171-MS-14	52171-MS-1/2 3/4	2 <sup>1</sup> / <sub>2</sub>	10 <sup>1</sup> / <sub>2</sub>	52-C-14	3/4	1	25
171-MS-1458	52171-MS-1/2 3/4	2 <sup>1</sup> / <sub>2</sub>	10 <sup>1</sup> / <sub>2</sub>	52-C-14-5/8	5/8	1	25
171MS18	52171-MS-1/2 3/4	2 <sup>1</sup> / <sub>2</sub>	10 <sup>1</sup> / <sub>2</sub>	52-C-18	3/4	2	25
171-MS-18 5/8	52171-MS-1/2 3/4	2 <sup>1</sup> / <sub>2</sub>	10 <sup>1</sup> / <sub>2</sub>	52-C-18-5/8-25	5/8	2	25
171MSX13	52171-MSX	2 <sup>1</sup> / <sub>2</sub>	10 <sup>1</sup> / <sub>2</sub>	52-C-13	1/2	1	25
171-MSX-14	52171-MSX	2 <sup>1</sup> / <sub>2</sub>	10 <sup>1</sup> / <sub>2</sub>	52-C-14	3/4	1	25
171-MSX-1458	52171-MSX	2 <sup>1</sup> / <sub>2</sub>	10 <sup>1</sup> / <sub>2</sub>	52-C-14-5/8	5/8	1	25
171MSX18	52171-MSX	2 <sup>1</sup> / <sub>2</sub>	10 <sup>1</sup> / <sub>2</sub>	52-C-18	3/4	2	25
171-MSX-18 5/8	52171-MSX	2 <sup>1</sup> / <sub>2</sub>	10 <sup>1</sup> / <sub>2</sub>	52-C-18-5/8-25	5/8	2	25
72171MS14	72171-MS-1/2 3/4	2 <sup>1</sup> / <sub>2</sub>	10 <sup>1</sup> / <sub>2</sub>	72-C-14	3/4	1	25
72171-MS-1458	72171-MS-1/2 3/4	2 <sup>1</sup> / <sub>2</sub>	10 <sup>1</sup> / <sub>2</sub>	72-C-14-5/8	5/8	1	25
72171MS18	72171-MS-1/2 3/4	2 <sup>1</sup> / <sub>2</sub>	10 <sup>1</sup> / <sub>2</sub>	72-C-18	3/4	2	25
72171-MS-18 5/8	72171-MS-1/2 3/4	2 <sup>1</sup> / <sub>2</sub>	10 <sup>1</sup> / <sub>2</sub>	72-C-18-5/8	5/8	2	25
72171MSX14	72171-MS-1/2 3/4	2 <sup>1</sup> / <sub>2</sub>	10 <sup>1</sup> / <sub>2</sub>	72-C-14	3/4	1	25
72171-MSX-1458	72171-MSX	2 <sup>1</sup> / <sub>2</sub>	10 <sup>1</sup> / <sub>2</sub>	72-C-14-5/8	5/8	1	25
72171MSX18	72171-MS-1/2 3/4	2 <sup>1</sup> / <sub>2</sub>	10 <sup>1</sup> / <sub>2</sub>	72-C-18	3/4	2	25
72171-MSX-1858	72171-MS-1/2 3/4	2 <sup>1</sup> / <sub>2</sub>	10 <sup>1</sup> / <sub>2</sub>	72-C-18-5/8	5/8	2	25

## Pre-Fab Components and Assemblies

### Box with Pre-Installed 10½" Pigtail, Raised Cover and Vertical Mounting Bracket

- 12" (SSF-SV12) or 18" (SSF-SV18) vertical mounting bracket
- 10½" insulated pigtail
- One- and two-device covers
- Raised ½", ⅝" and ¾"
- 1½" and 2⅝" box depths



151-SV18-13

151-SV12-13

Boxes & Covers — Steel City® Metallic Boxes

### Pre-Assembled Installation **VS.** Standard Installation

1. Mount assembly to floor stud — **DONE!**

1. Purchase pre-stripped pigtail
2. Install pigtail and ground screw in box
3. Insert box into vertical bracket
4. Insert device cover to vertical bracket
5. Mount assembly to floor stud



CAT. NO.	BOX TYPE INCLUDED	BOX DEPTH (IN.)	PIGTAIL TYPE INCLUDED	BRACKET TYPE INCLUDED	COVER TYPE INCLUDED	RAISED (IN.)	NO. OF DEVICES	STD. CTN.
151-SV12-13	521511234EW	1½	GSC12	SSF-SV12	52-C-13	½	1	10
151-SV12-1458	521511234EW	1½	GSC12	SSF-SV12	52-C-14-5/8	⅝	1	10
151-SV12-14	521511234EW	1½	GSC12	SSF-SV12	52-C-14	¾	1	10
151-SV12-17	521511234EW	1½	GSC12	SSF-SV12	52-C-17-25	½	2	10
151-SV12-1858	521511234EW	1½	GSC12	SSF-SV12	52-C-18-5/8-25	⅝	2	10
151-SV12-18	521511234EW	1½	GSC12	SSF-SV12	52-C-18	¾	2	10
171-SV12-13	521711234E	2⅝	GSC12	SSF-SV12	52-C-13	½	1	10
171-SV12-1458	521711234E	2⅝	GSC12	SSF-SV12	52-C-14-5/8	⅝	1	10
171-SV12-14	521711234E	2⅝	GSC12	SSF-SV12	52-C-14	¾	1	10
171-SV12-17	521711234E	2⅝	GSC12	SSF-SV12	52-C-17-25	½	2	10
171-SV12-1858	521711234E	2⅝	GSC12	SSF-SV12	52-C-18-5/8-25	⅝	2	10
171-SV12-18	521711234E	2⅝	GSC12	SSF-SV12	52-C-18	¾	2	10
151-SV18-13	521511234EW	1½	GSC12	SSF-SV18	52-C-13	½	1	10
151-SV18-1458	521511234EW	1½	GSC12	SSF-SV18	52-C-14-5/8	⅝	1	10
151-SV18-14	521511234EW	1½	GSC12	SSF-SV18	52-C-14	¾	1	10
151-SV18-17	521511234EW	1½	GSC12	SSF-SV18	52-C-17-25	½	2	10
151-SV18-1858	521511234EW	1½	GSC12	SSF-SV18	52-C-18-5/8-25	⅝	2	10
151-SV18-18	521511234EW	1½	GSC12	SSF-SV18	52-C-18	¾	2	10
171-SV18-13	521711234E	2⅝	GSC12	SSF-SV18	52-C-13	½	1	10
171-SV18-1458	521711234E	2⅝	GSC12	SSF-SV18	52-C-14-5/8	⅝	1	10
171-SV18-14	521711234E	2⅝	GSC12	SSF-SV18	52-C-14	¾	1	10
171-SV18-17	521711234E	2⅝	GSC12	SSF-SV18	52-C-17-25	½	2	10
171-SV18-1858	521711234E	2⅝	GSC12	SSF-SV18	52-C-18-5/8-25	⅝	2	10
171-SV18-18	521711234E	2⅝	GSC12	SSF-SV18	52-C-18	¾	2	10

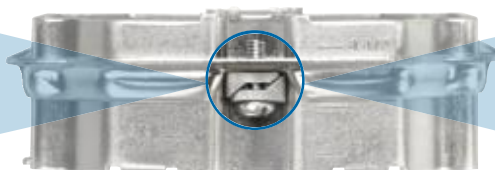
## Pre-Fab Components and Assemblies

UL® Listed Adjustable Mud Ring now available in both single- and two-gang.

**NEW!**

### Adjustable Mud Rings

Mud Rings feature an inner ring that adjusts from ½" to 1½" in depth to accommodate various drywall thicknesses. Marked with a measured rule and equipped with two adjustment screws, the inner ring can be set to the anticipated depth prior to installation and then easily adjusted after drywall installation to accommodate any variation in depth (½" to 1½").



**Wedge Locking Blocks**  
Designed to ensure grounding continuity

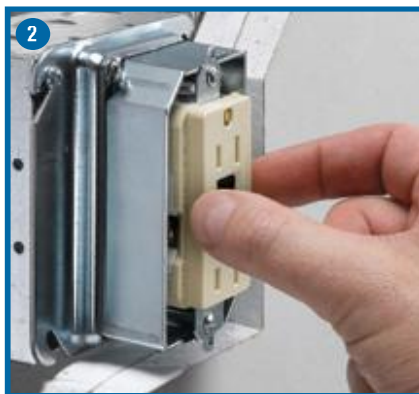


### Adjustable Mud Ring Installation/Adjustment Steps:



**1 Loosen...**

The two adjustment screws located on opposing corners of the mud ring.



**2 Adjust...**

Inner ring to be flush with wall surface.



**3 Re-tighten...**

Adjustment screws.

CAT. NO.	DESCRIPTION	STD. CTN.
52-C-ADJ	Single-Gang Adjustable Mud Ring, ½" to 1½"	25
52-C-ADJ2	Two-Gang Adjustable Mud Ring, ½" to 1½"	20

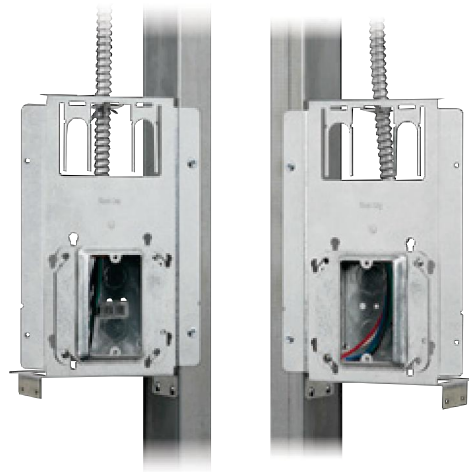
## Pre-Fab Components and Assemblies

### Three Products in One!

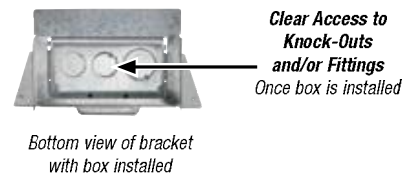
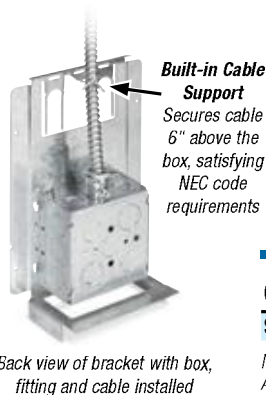
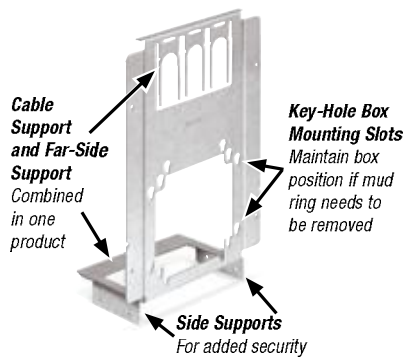
#### Pre-Fab Box Bracket with Far-Side and Cable Support

The savings can add up, particularly on a large job, when a box bracket, far-side support and cable support are combined in one product to reduce your labor and inventory costs. It is designed for maximum flexibility with flanges for either left or right stud mount, and compatibility with either 4" and 4<sup>1</sup>/<sub>16</sub>" boxes.

- Box bracket, far-side support and cable support combined in one product to reduce your labor and inventory costs
- Built-in cable support secures cable 6" above the box, satisfying NEC® code requirements
- Flexible design accommodates both 4" and 4<sup>1</sup>/<sub>16</sub>" boxes
- Key-hole box mounting slots maintain box position if mud ring needs to be removed
- Provides clear access to knock-outs once the box is installed for installation of fittings
- Mounts to either side of the stud



Can be mounted either left or right of the stud

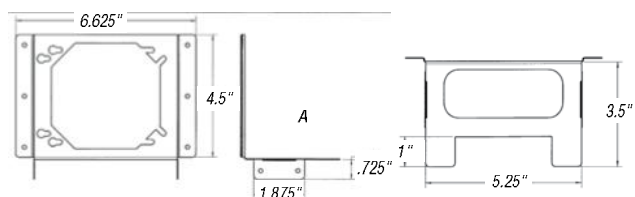
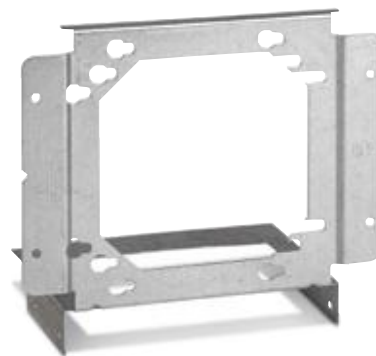


CAT. NO.	DESCRIPTION	STD. PKG. QTY.
SSF-SH2346-CS	Pre-Fab Box Bracket with Far-Side and Cable Support	50

NEC and National Electrical Code are registered trademarks of the National Fire Protection Association, Inc.

### Mounting Bracket

- Attaches 4" and 4<sup>1</sup>/<sub>16</sub>" electrical boxes to metal stud
- Support leg can be attached to stud to eliminate movement of box in wall
- Attaches to metal or wood stud using self-tapping screws and screw gun or nails
- One part mounts boxes for 1<sup>1</sup>/<sub>2</sub>", 2<sup>1</sup>/<sub>2</sub>", 3<sup>1</sup>/<sub>2</sub>", 4" and 6" stud which means less inventory



CAT. NO.	DESCRIPTION	STD. CTN.
SSF-SH2346	4" & 4 <sup>1</sup> / <sub>16</sub> " outlet boxes to 2 <sup>1</sup> / <sub>2</sub> ", 3 <sup>1</sup> / <sub>2</sub> ", 4" & 6" metal studs	100

## Pre-Fab Components and Assemblies

### Box Mounting Brackets for Between Studs

- Supports electrical boxes, plaster rings or low-voltage devices from one bracket
- Accommodates 4" or 4<sup>1</sup>/<sub>16</sub>" boxes
- Bendable leg serves as a bracket stabilizer
- SB brackets allow box mounting in all four 90° orientations

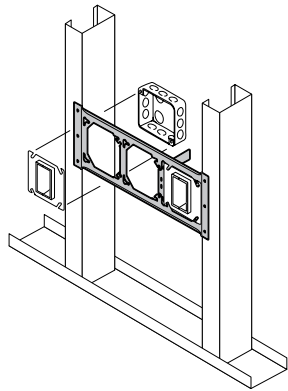


Fig. 1



Fig. 2

CAT. NO.	FIG. NO.	DESCRIPTION	STD. CTN.
SSF-SB16	1	Box mounting bracket for between studs, 16" stud spacing	25
SSF-SB24	2	Box mounting bracket for between studs, 24" stud spacing	25

### Screw-Gun Box Bracket

- Self-tapping screws are aligned with the dimples so that the box is straight
- Enables mounting of multiple boxes
- Depth set for 1<sup>1</sup>/<sub>2</sub>"- or 2<sup>1</sup>/<sub>8</sub>"-deep electrical box
- Installs easily with a screw gun
- SGA brackets have adjustable tabs for 1<sup>1</sup>/<sub>2</sub>"- or 2<sup>1</sup>/<sub>8</sub>"-deep boxes
- SGA brackets adjustable for non-standard stud spacing

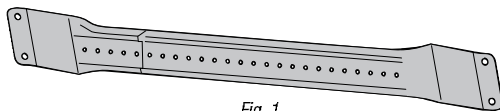


Fig. 1

CAT. NO.	FIG. NO.	DESCRIPTION	STUD SPACING	BOX DEPTH	STD. CTN.
SSF-SG16A	1	Adjustable box bracket	11"-18"	1 <sup>1</sup> / <sub>2</sub> " or 2 <sup>1</sup> / <sub>8</sub> "	50
SSF-SG24A	1	Adjustable box bracket	17"-26"	1 <sup>1</sup> / <sub>2</sub> " or 2 <sup>1</sup> / <sub>8</sub> "	50

### Extension-Plate Bracket

- Improved bracket with bendable stabilizer leg for use on 2<sup>1</sup>/<sub>2</sub>" and 3<sup>1</sup>/<sub>2</sub>" metal studs
- Mounts outlet boxes 12" or 18" offset from either a metal stud track or a stud
- When mounted, drywall ring is brought to within 1/8" of drywall every time and will not bulge or break out drywall
- Mounts 4" or 4<sup>1</sup>/<sub>16</sub>" outlet boxes, 1<sup>1</sup>/<sub>2</sub>" or 2<sup>1</sup>/<sub>8</sub>" deep
- SV18 provides compliance with Americans with Disabilities Act (ADA) requirements



Fig. 1

CAT. NO.	FIG. NO.	DESCRIPTION	STD. CTN.
SSF-SV12	1	Extension plate bracket, 12" height	50
SSF-SV18	1	Extension plate bracket, 18" height	50

## Pre-Fab Components and Assemblies

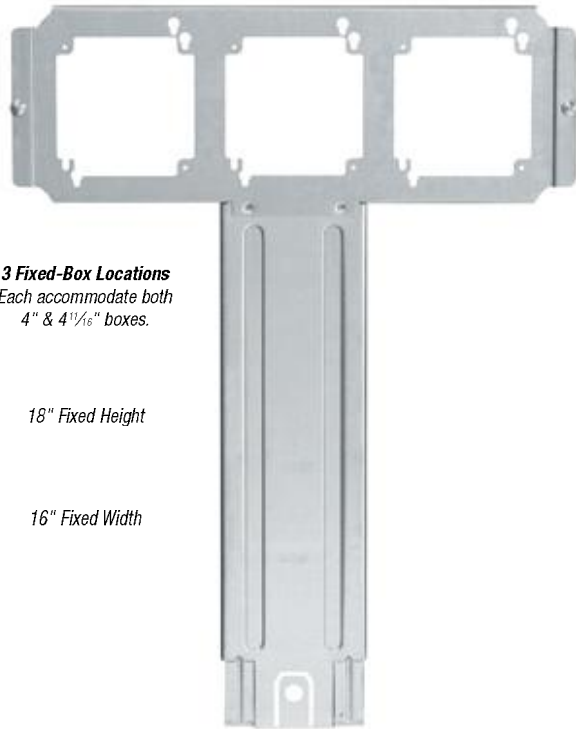
### Consistent Box Locations and Box Height...Every Time!

#### Pre-Fab T Bracket

Consistency results in efficiency and labor savings on the job. With three fixed-box locations and a fixed height of 18", the new Steel City® Pre-Fab T Bracket provides a consistent installation every time. For added efficiency, the bracket includes integral mounting screws that help reduce installation time. A handy locator tab at the base of the bracket saves you the time of looking for installed boxes that have been hidden by wall coverings. The base also features unique floor track tabs. The inner tab slides in front of the floor track and the two outer tabs slide behind the floor track to provide stability when positioning the bracket.



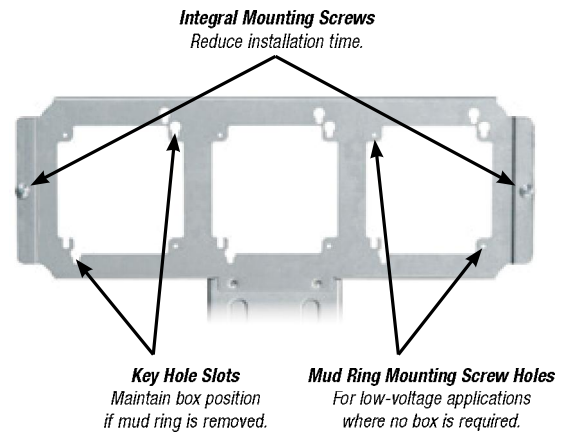
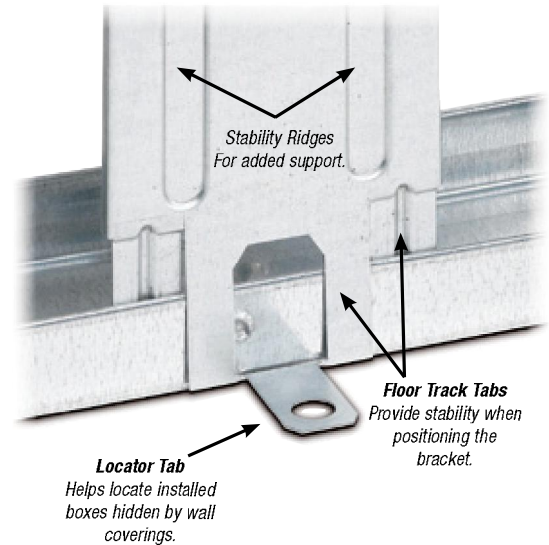
Boxes & Covers — Steel City® Metallic Boxes



**3 Fixed-Box Locations**  
Each accommodate both 4" & 4 1/8" boxes.

18" Fixed Height

16" Fixed Width



#### Pre-Fab Box Bracket with Far-Side and Cable Support

CAT. NO.	DESCRIPTION	STD. CTN.
H16V18S	Pre-Fab T Bracket	10



## Pre-Fab Components and Assemblies

**Easily  
Pre-Assembled  
Off Site  
for Faster  
Installation  
On Site!**

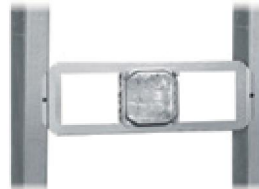
### Pre-Fabricated Components

Rather than assembling box mounting brackets and device covers on site, keep an eye on profit and use Steel City® Pre-Fab Components to set up jobs off site for a quick and easy installation on site. They accommodate a wide variety of Steel City covers and they're readily available for fast-track projects.

- Ideal for use in hotels, casinos, hospitals, large office buildings and any other commercial or institutional application where rough-in products can be pre-fabricated to match floor plans for quicker on-site installation
- Items readily available for fast-track projects — no special lead time required
- All products are UL approved and meet applicable building codes

## SB016 and SB024 Stud-to-Stud Horizontal Mounting Brackets

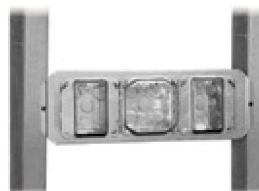
- Constructed of 24-gauge steel
- Pre-measured on center for 16" (SB016) or 24" (SB024) stud spacing
- SB016 accepts three 4" square or two 4<sup>1</sup>/<sub>16</sub>" boxes (deep or shallow)
- SB024 accepts five 4" square or four 4<sup>1</sup>/<sub>16</sub>" boxes (deep or shallow)
- Can be mounted at any height to meet individual project requirements
- Versatile, open design enables mounting of box in any location across horizontal plane between studs
- Device cover (mud ring) mounts to front of bracket to set box in desired location
- Stamped rule on bracket with ¼", ½" and 1" markings enables fast box setting



SB016 mounted to 16" studs with one 4" square box installed.



SB024 mounted to 24" studs with one 4" square box installed.



SB016 mounted to 16" studs with three 4" square boxes (full capacity) installed.



SB024 mounted to 24" studs with five 4" square boxes (full capacity) installed.

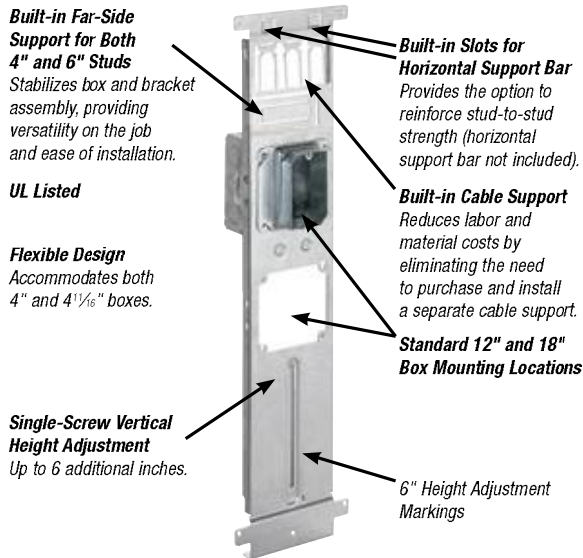


CAT. NO.	DESCRIPTION	STD. CTN.
SB016	16" stud-to-stud horizontal mounting bracket	25
SB024	24" stud-to-stud horizontal mounting bracket	25

## Pre-Fab Components and Assemblies

### VAFB Vertically Adjustable Floor Brackets

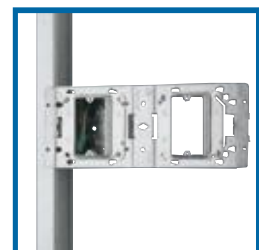
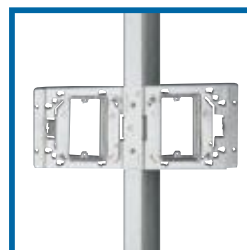
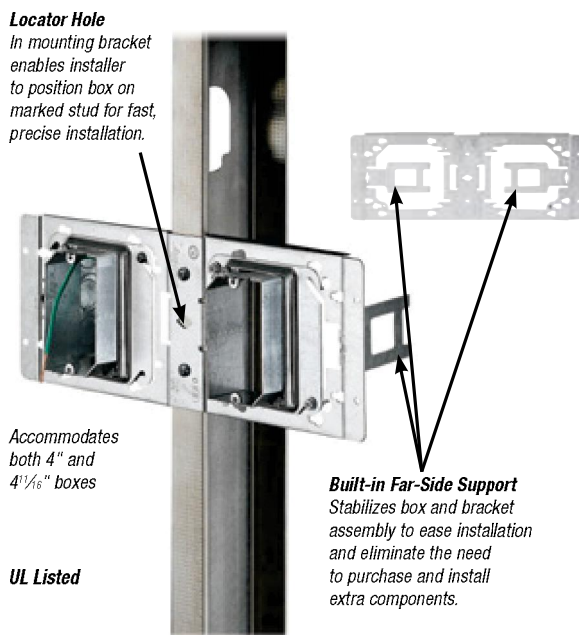
**NEW!**



CAT. NO.	DESCRIPTION	STD. CTN.
VAFB	Pre-Fab Vertically Adjustable Floor Bracket	10

### DBB1 Dual-Box Mounting Bracket

**NEW!**



CAT. NO.	DESCRIPTION	STD. CTN.
DBB1	Pre-Fab Dual-Box Bracket	50

Boxes & Covers — Steel City® Metallic Boxes

## Pre-Fab Components and Assemblies

Meet Code Requirements for Supporting and Securing Installed MC Cable.

**NEW!**

### Cable Support Bracket

- Provides a simple means of complying with NEC® 330.30 requirements for securing and supporting MC cable
- Quick and easy locking tab snaps through slot to secure cable
- Ribs maintain separation of cables
- Durable steel construction retains integrity
- Versatile design — use with Romex or MC cable
- UL Listed



CAT. NO.	DESCRIPTION	STD. CTN.
CSB1	Cable Support Bracket	100

*NEC and National Electrical Code are registered trademarks of the National Fire Protection Association, Inc.*

