



[Catalog Home](#)

Product Datasheet



ANDERSON FARGO

WCF92B2 -- Terminal, Aluminum Weldment



Terminal, Aluminum Weldment, Cable to Flat, cable range 0.855-0.883 Pad: 2 hole, 2 in

Product Specifications

<p>Family Image</p>	 <p>Terminals</p>
<p>Terminals</p>	 <p>WCF Series Cable to Flat Aluminum Weldment Terminals</p>
<p>PDF Catalog Page</p>	<p>Click HERE to view the web page.</p>
<p>Pad Holes</p>	<p>2</p>
<p>Pad Width</p>	<p>2 in</p>
<p>Dimension A</p>	<p>3 1/4 in (82.55 mm)</p>
<p>Dimension B</p>	<p>1 1/2 in (38.1 mm)</p>
<p>Dimension K</p>	<p>5/8 in (15.88 mm)</p>
<p>Dimension L</p>	<p>5 in (127.0 mm)</p>
<p>Dimension T</p>	<p>1/2 in (12.7 mm)</p>
<p>Dimension W</p>	<p>2 in (50.8 mm)</p>
<p>Minimum Conductor</p>	<p>0.855</p>

Maximum Conductor	0.883
Material Type	Non-Standard
UPC Code	09635934080
Standard Package	1
Standard Package Unit	Each
Min Order Qty	1
Weight / Ea.	0.882 lbs

Notes
 45 or 90 degree angle terminal may be specified by adding X45 or Y90 suffix to catalog number.

Compressed Product Number
 WCF92B2

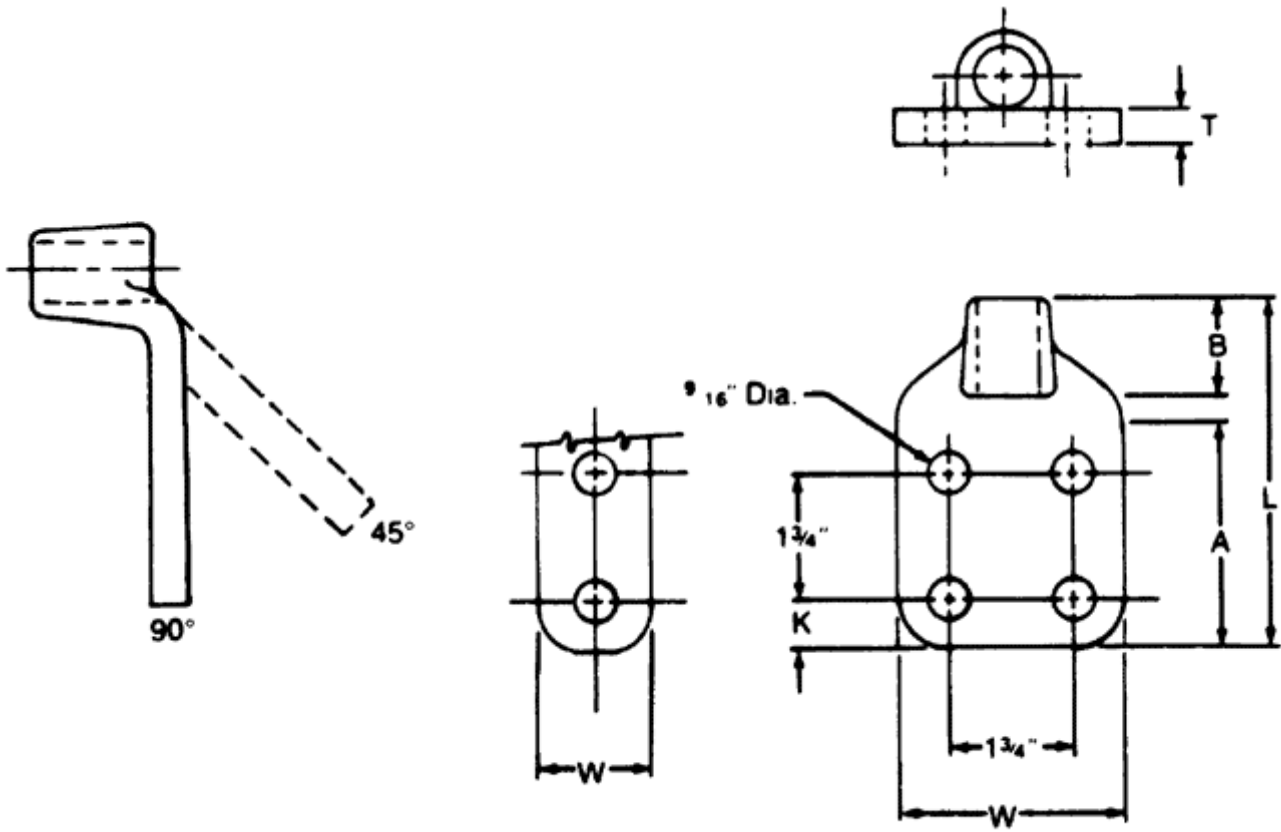


Fig. 1

Fig. 2

[Catalog Home](#)



[Warranty Info](#) | [Trademarks](#) | [Terms of Use](#)

All contents Copyright © 2007 Hubbell Power Systems, Inc. All rights reserved.

NOTE: Because Hubbell has a policy of continuous product improvement, we reserve the right to change design and specifications without notice.