



**POWER  
SYSTEMS, INC.**

*In the world of power transmission and distribution, look to Hubbell.*

**Interactive  
eCatalog**

[Catalog Home](#)

**Product Datasheet**

**ANDERSON FARGO**

**SA2613 -- Socket Eye**



Socket Eye, Ductile Iron, Eye: 2.750" with 0.813" Hole, UTS 30,000 lb; For use with ANSI class 52-3 & 52-5 insulators.

**Product Specifications**

**Hardware Family**



Socket Eye &  
Socket Clevis

Coupling Fittings

**Socket Fittings**



SA Series

Socket-Eye  
Coupling Fittings

**PDF Catalog Page**

[Click HERE to view the web page.](#)

**Ultimate Strength**

30,000 lb ( 13,608 kg)

**Coupling Length**

2.063 in (52.40 mm)

**Eye Width**

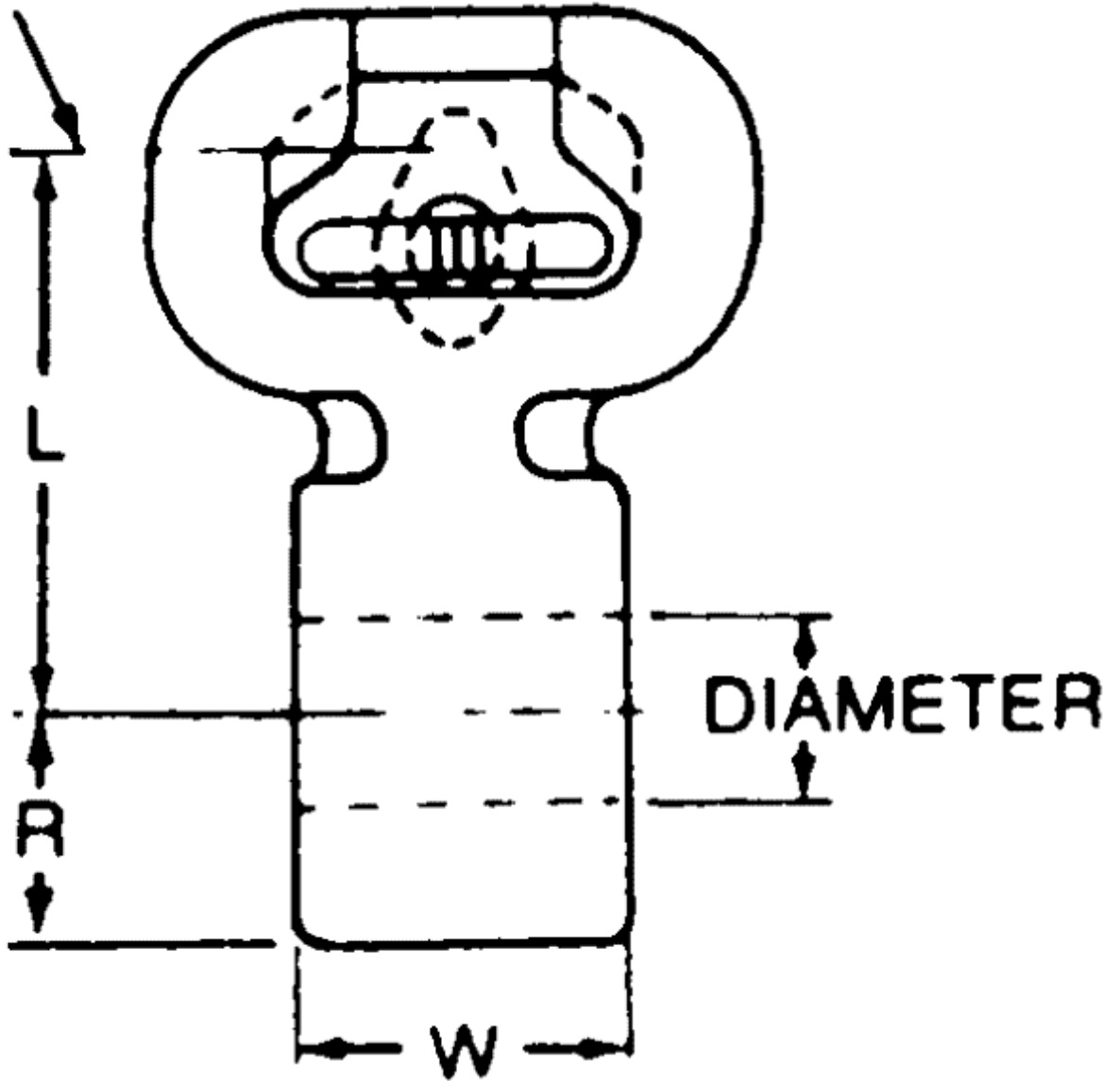
2.750 in (69.85 mm)

Eye Hole Diameter	0.813 in (20.64 mm)
Dimension R	0.813 in (20.64 mm)
Dimension W	2.750 in (69.85 mm)
Material	Ductile Iron
Cotter Pin Material	Stainless Steel
Material Type	Non-Standard
UPC Code	09635932486
Standard Package	15
Standard Package Unit	Each
Min Order Qty	1
Weight / Ea.	2.842 lbs

Notes
For use with ANSI class 52-3 & 52-5 insulators.

Compressed Product Number
SA2613

☉ BALL



[Catalog Home](#)



[Warranty Info](#) | [Trademarks](#) | [Terms of Use](#)

*All contents Copyright © 2007 Hubbell Power Systems, Inc. All rights reserved.*

NOTE: Because Hubbell has a policy of continuous product improvement, we reserve the right to change design and specifications without notice.