

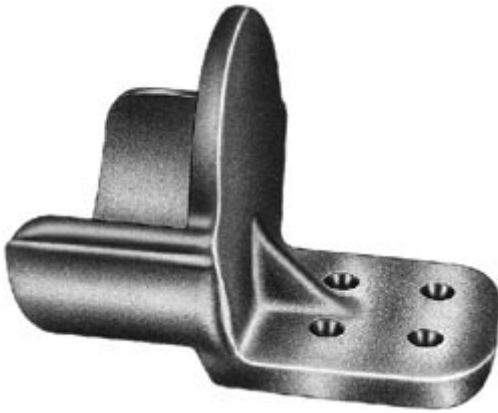


[Catalog Home](#)

**Product Datasheet**



**ANDERSON FARGO**

**WSTF60DCF -- Terminal, Aluminum Weldment**



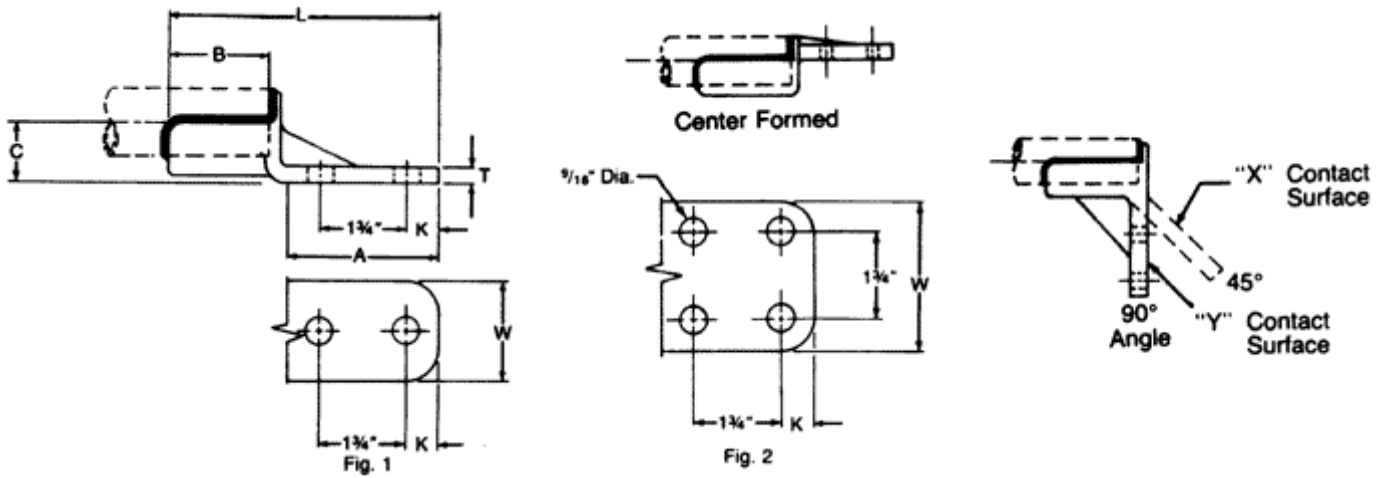
Terminal, Aluminum Weldment, Tube to Flat, tube size 6 IPS, Centerformed Pad: 4 hole, 4 in

**Product Specifications**

<p><b>Family Image</b></p>	 <p>Terminals</p>
<p><b>Terminals</b></p>	 <p>WSTF Series Tube to Flat Aluminum Weldment Terminals</p>
<p><b>PDF Catalog Page</b></p>	<p><a href="#">Click HERE to view the web page.</a></p>
<p><b>Pad Holes</b></p>	<p>4</p>
<p><b>Pad Width</b></p>	<p>4 in</p>
<p><b>Pad Position</b></p>	<p>Centerformed</p>
<p><b>Material Type</b></p>	<p>Non-Standard</p>
<p><b>UPC Code</b></p>	<p>09635934244</p>
<p><b>Standard Package</b></p>	<p>9</p>
<p><b>Standard Package Unit</b></p>	<p>Each</p>
<p><b>Min Order Qty</b></p>	<p>1</p>
<p><b>Weight / Ea.</b></p>	<p>6.076 lbs</p>

**Compressed Product Number**

WSTF60DCF



Catalog Home



[Warranty Info](#) | [Trademarks](#) | [Terms of Use](#)

All contents Copyright © 2007 Hubbell Power Systems, Inc. All rights reserved.

NOTE: Because Hubbell has a policy of continuous product improvement, we reserve the right to change design and specifications without notice.