



# MECHANICAL ROTATABLE CRIMP TOOL BURNDY® MRC840

## WARRANTY

The BURNDY® MRC840 is warranted to be free of defects in materials and workmanship for a period of 1 year, except in the case of abuse or modification.

Any BURNDY® MRC840 found to be defective in material or workmanship and returned to the BURNDY® Tool Service Center within 1 year of shipment will be repaired or the tool will be replaced free of charge at the option of the BURNDY® Tool Service Center.

After 1 year, units will be repaired and billing will be based on a sliding scale according to how long the unit has been in service.

Any BURNDY® MRC840 returned for repair must be shipped prepaid to the BURNDY® Tool Service Center, 150 BURNDY Road, Littleton, New Hampshire, USA 03561. On your packaging slip indicate the nature of the repair required (or describe the problem) and the number of the purchase order requesting service. Please provide a contact name and phone



number in the event we need to call you regarding the repair or service.

BURNDY® disclaims all other warranties, expressed or implied, including without limitations the warranties of merchantability and fitness for a particular purpose.

BURNDY® will not under any circumstances be liable for the cost of removal or reinstallation of goods or the cost of disassembly or reassembly of equipment in connection therewith, or for the loss of the use of the Buyer's equipment or facilities, or for the loss of business or good will or profits, or for the cost of inspection or storage, or for any incidental or consequential damages of any nature or description whatever which may arise from BURNDY® sale of goods to Buyer.

## OPERATING SAFETY PRECAUTIONS

### DANGER



Tools are NOT insulated for use on or near energized conductors. Use of these tools near energized conductors may lead to electrical shock, causing severe injury or death. Do NOT use these tools near energized conductors without adequately insulating operator and surroundings.

### WARNING



Pinch point. Keep all body parts away from the head of the tool during use to avoid serious personal injury.

Use all appropriate personal safety equipment when handling, operating, and servicing this tool such as, safety shoes, eye protection, and work gloves.

To help ensure safe operation of this tool, keep all safety labels clean and legible. Replace labels when necessary with new labels.

## DESCRIPTION

The BURNDY® MRC840 mechanical crimp tool is designed to install YA, YA-L, YS, YS-L series connectors. Connector/Conductor ranges are from #8 AWG through 4/0 AWG stranded copper.

The MRC840 is equipped with rotatable crimp die wheels that are color coded. The rotatable die wheel crimp grooves are engraved with a die index number. The engraved index number embosses the connector during crimping permitting permanent inspection of the completed connection.

**For more information write or call:**  
BURNDY® TOOL SERVICE CENTER  
150 BURNDY Road  
Littleton, NH 03561 USA  
Telephone: 1-800-426-8720  
ToolRepair@burndy.com

FORMMRCOMI  
Rev. D  
Item # 50097800


## FEATURES AND BENEFITS

FEATURES	BENEFITS
-Comfort grip handles	Aids in prevention of hand slippage
-Heat treated steel jaws	Reduces jaw buckling and misalignment under heavy loading
-No tool adjustment required	Provides reliable & consistent crimps
-Approximately 9000 crimp cycle life	Lasts longer than imitations and will still be working when others have worn out
-Diewheel locking plate w/rotatable die wheel	Easily indexed to the desired crimp position Ensures a quality crimp
-Multiple crimp selections on a rotatable die wheel	No lost dies
-High strength fasteners	Increases tool life by reducing tool wear
-Plated jaws	Provides enhanced corrosion protection

## SPECIFICATIONS

Crimps YA, YA-L, YS, YS-L series connectors on #8 AWG through 4/0 AWG stranded copper conductor. Connector/conductor combinations are UL Listed when installed in accordance with the installation chart.

## INSTALLATION CHART

MRC840 TOOL INSTALLATION CHART							
CONDUCTOR (COPPER)	CONNECTOR (CU)		COLOR CODE	DIE INDEX	NO. OF CRIMPS	2 CRIMPS	
	HYLUG™ TERM	HYLINK™ SPLICE				STANDARD BARREL (-L)	LONG BARREL
#8 AWG STR.	YA8C-	YS8C-	RED	49	1		
#6 AWG STR.	YA6C-	YS6C-	BLUE	7	1	2	
#5 AWG STR.	YA5C-	YS5C-	BLUE	7	1	2	
#4 AWG STR.	YA4C-	YS4C-	GRAY	8	1	2	
#2 AWG STR.	YA2C-	YS2C-	BROWN	10	1	2	
#1 AWG STR.	YA1C-	YS1C-	GREEN	11	1	2	
1/0 AWG STR.	YA25-	YS25-	PINK	12	2	4	
2/0 AWG STR.	YA26-	YS26-	BLACK	13	2	4	
3/0 AWG STR.	YA27-	YS27-	ORANGE	14	2	4	
4/0 AWG STR.	YA28-	YS28-	PURPLE	15	2	4	
 THE ABOVE CONNECTOR/CONDUCTOR COMBINATIONS ARE UL LISTED WHEN INSTALLED WITH THIS TOOL.							
OIL ALL PIVOTING POINTS EVERY THREE MONTHS							

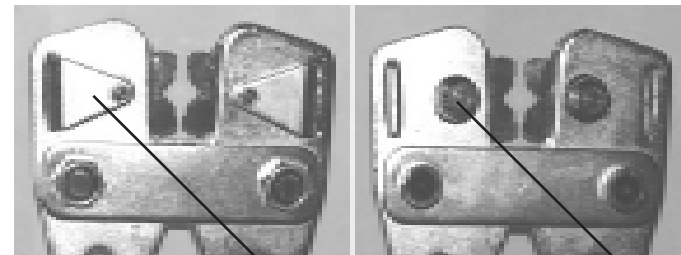
## OPERATION

The color coded rotatable crimp die wheel rotates to provide a proper match of the die wheel and color coded connector. The die index is embossed onto the connector after the crimp is completed for permanent inspection capability.

To index die wheel to desired crimp position:

- A. Open handles fully.
- B. Press die pin.
- C. Rotate die to the desired crimp groove.
- D. Release die pin. Be sure the locking plate is back in its home position.

**CAUTION:** The locking plate must be in the home position. Cycling the tool with the locking plate out from the home position may result in permanent damage to the die pin.



DIE PLATE  
(HOME POSITION)

DIE PIN  
(REVERSE SIDE)

## PREVENTIVE MAINTENANCE

The service life of a tool can be greatly improved with proper care and maintenance. To extend the life of your BURNDY® MRC840 mechanical crimp tool keep it clean and well lubricated. Oil all pivoting points every three months.

## SERVICE

OTHER THAN THE MAINTENANCE TASKS DESCRIBED ABOVE, THESE TOOLS ARE **NOT** USER SERVICEABLE. COMPLETE DISASSEMBLY OF THE TOOL IS NOT RECOMMENDED. SHOULD SERVICE BE REQUIRED, RETURN THE TOOL TO THE BURNDY® TOOL SERVICE CENTER OR A BURNDY® AUTHORIZED TOOL REPAIR CENTER. CALL 1-800-426-8720 FOR ADDITIONAL INFORMATION.

For more information contact:

BURNDY®  
150 BURNDY Road  
Littleton, NH 03561  
or call, toll free 1-800-426-8720

Additional or replacement manuals may be obtained free of charge from the BURNDY® Service Center.