

# Condulet FS and FD single-gang device boxes – cast iron or aluminum

With and without mounting lugs for threaded rigid and IMC conduit

## Applications:

Cast device boxes are installed to:

- Accommodate wiring devices
- Act as pull boxes for conductors in a conduit system
- Provide openings to make splices and taps in conductors
- Provide access to conductors for maintenance and future system changes
- Connect conduit sections
- FSY boxes for mounting surface devices on floor or bench (used with single-gang covers)

## Features:

- Internal green ground screw standard on boxes
- Suitable for use in wet locations when used with gasketed covers
- Mounting lugs standard on most boxes
- Tapered threaded hubs (NPT) with integral bushing
- Available for surface mounting (with mounting lugs) or flush mounting (without mounting lugs) as listed
- Available as shallow (FS) or deep (FD) configuration; use FD if device to be enclosed exceeds 1 5/8" in depth
- Ample wiring room provided in either FS or FD configuration
- Wide selection of surface or flush covers available in three materials (sheet steel, Feraloy, aluminum)
- Covers for flush mounting extend to conceal the rough plaster line
- Available in single-gang and multi-gang configurations with hubs, and as blank bodies for drilled and tapped openings

## Certifications and compliances:

- UL standard: UL514A
- ANSI standard: C33.84
- Fed. Spec.: W-C-5860
- CSA standard: C22.2 No. 18

## Standard materials:

- Feraloy iron alloy or copper-free aluminum

## Standard finishes:

- Feraloy – electrogalvanized and aluminum acrylic paint
- Aluminum – natural

## Options:

| Description  | Suffix      |
|--|-------------|
| • Corro-free epoxy powder coat, external.....              | <b>S752</b> |
| • Corro-free epoxy powder coat, internal and external..... | <b>S753</b> |
| • Hot dip galvanized .....                                 | <b>HDG</b>  |

## Size ranges:

- Hubs – 1/2" to 1"

## Ordering information:

### FS/FD<sup>ⓐ</sup>



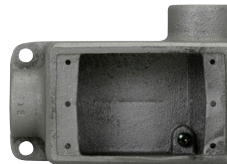
| Hub size | Cat. #                 | Cat. #                 |
|----------|------------------------|------------------------|
| 1/2"     | <b>FS1<sup>ⓐ</sup></b> | <b>FD1<sup>ⓐ</sup></b> |
| 3/4"     | <b>FS2<sup>ⓐ</sup></b> | <b>FD2<sup>ⓐ</sup></b> |
| 1"       | <b>FS3<sup>ⓐ</sup></b> | <b>FD3<sup>ⓐ</sup></b> |

### FSL/FDL



| Hub size | Cat. #      | Cat. #      |
|----------|-------------|-------------|
| 1/2"     | <b>FSL1</b> | <b>FDL1</b> |
| 3/4"     | <b>FSL2</b> | <b>FDL2</b> |

### FSR/FDR



| Hub size | Cat. #      | Cat. #      |
|----------|-------------|-------------|
| 1/2"     | <b>FSR1</b> | <b>FDR1</b> |
| 3/4"     | <b>FSR2</b> | <b>FDR2</b> |

### Die cast aluminum<sup>ⓐ</sup>



| Hub size | Cat. #        | Cat. #         |
|----------|---------------|----------------|
| 1/2"     | <b>FS1 SA</b> | <b>FSC1 SA</b> |
| 3/4"     | <b>FS2 SA</b> | <b>FSC2 SA</b> |

### FSC/FDC<sup>ⓐ</sup>



| Hub size | Cat. #                  | Cat. #                  |
|----------|-------------------------|-------------------------|
| 1/2"     | <b>FSC1<sup>ⓐ</sup></b> | <b>FDC1<sup>ⓐ</sup></b> |
| 3/4"     | <b>FSC2<sup>ⓐ</sup></b> | <b>FDC2<sup>ⓐ</sup></b> |
| 1"       | <b>FSC3<sup>ⓐ</sup></b> | <b>FDC3<sup>ⓐ</sup></b> |

<sup>ⓐ</sup> Available in sand cast copper-free aluminum. To order, add suffix 'SCA' to end of catalog number.

<sup>ⓑ</sup> Available in copper-free aluminum. To order, add suffix 'SA' to end of catalog number.

<sup>ⓒ</sup> Compatible with select hinged and open front control station covers in Section 4C.

<sup>ⓓ</sup> Mounting lugs and ground screw are not offered with standard die cast aluminum box. For sand cast aluminum box with mounting lugs and ground screw, change 'SA' in catalog number to 'SCA.' For example: FS1 SCA.

# Condulet FS and FD single-gang device boxes – cast iron or aluminum

With and without mounting lugs for threaded rigid and IMC conduit

## Ordering information (continued):

### FSA/FDA<sup>ⓐ</sup>



| Hub size | Cat. # | Cat. # |
|----------|--------|--------|
| 1/2"     | FSA1   | FDA1   |
| 3/4"     | FSA2   | FDA2   |

### FSSA<sup>ⓐ</sup>



| Hub size | Cat. # |
|----------|--------|
| 3/4"     | FSSA2  |

### FSLA/FDLA<sup>ⓐ</sup>



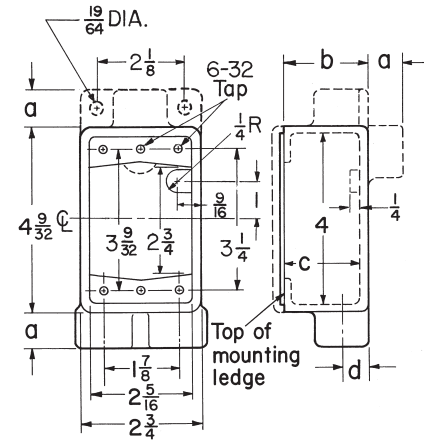
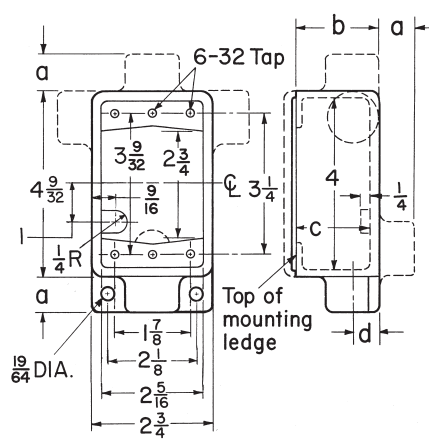
| Hub size | Cat. # | Cat. # |
|----------|--------|--------|
| 1/2"     | FSLA1  | FDLA1  |
| 3/4"     | FSLA2  | FDLA2  |

### FSS/FDD<sup>ⓐ</sup>



| Hub size | Cat. #            | Cat. #            |
|----------|-------------------|-------------------|
| 1/2"     | FSS1 <sup>ⓐ</sup> | FDD1              |
| 3/4"     | FSS2 <sup>ⓐ</sup> | FDD2 <sup>ⓐ</sup> |
| 1"       | FSS3              | FDD3              |

## Dimensions (in inches):



### FSCC/FDCC



| Hub size | Cat. # | Cat. # |
|----------|--------|--------|
| 1/2"     | FSCC1  | FDCC1  |
| 3/4"     | FSCC2  | FDCC2  |

| Series | Hub size | a   | b       | c       | d   |
|--------|----------|-----|---------|---------|-----|
| FS     | 1/2"     | 7/8 | 1 1/8   | 1 11/16 | 5/8 |
|        | 3/4"     | 7/8 | 1 1/8   | 1 11/16 | 3/4 |
|        | 1"       | 1   | 1 1/8   | 1 11/16 | 7/8 |
| FD     | 1/2"     | 7/8 | 2 11/16 | 2 1/2   | 5/8 |
|        | 3/4"     | 7/8 | 2 11/16 | 2 1/2   | 3/4 |
|        | 1"       | 1   | 2 11/16 | 2 1/2   | 7/8 |

### FSCA<sup>ⓐ</sup>



| Hub size | Cat. # |
|----------|--------|
| 1/2"     | FSCA1  |
| 3/4"     | FSCA2  |

<sup>ⓐ</sup> Mounting lugs not available.

<sup>ⓑ</sup> Back entry hub is threaded.

<sup>ⓒ</sup> Available in copper-free aluminum. To order, add suffix 'SA' to end of catalog number.

# Condulet FS and FD single-gang device boxes – cast iron or aluminum

With and without mounting lugs for threaded rigid and IMC conduit

## Ordering information (continued):

### FSCT/FDCT



| Hub size | Cat. #             | Cat. #             |
|----------|--------------------|--------------------|
| 1/2"     | FSCT1              | FDCT1              |
| 3/4"     | FSCT2 <sup>H</sup> | FDCT2 <sup>H</sup> |
| 1"       | FSCT3              | FDCT3              |

### FSY<sup>⓪</sup>



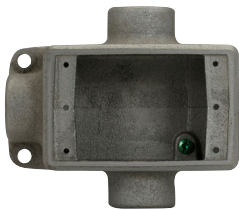
| Description | Hub size | Cat. # |
|-------------|----------|--------|
| Single face | 1"       | FSY311 |
| Double face | 1"       | FSY312 |

### FDXC<sup>⓪⓪</sup>



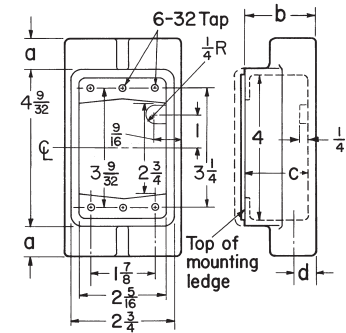
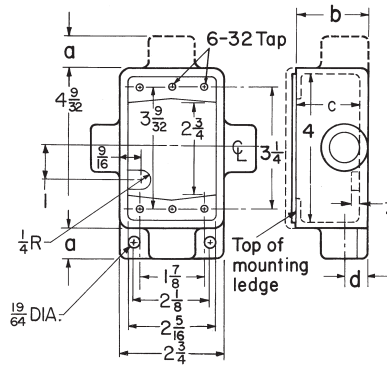
| Hub size | Cat. #  |
|----------|---------|
| 3/4"     | FDXC219 |

### FST/FDT



| Hub size | Cat. #            | Cat. # |
|----------|-------------------|--------|
| 1/2"     | FST1              | FDT1   |
| 3/4"     | FST2 <sup>H</sup> | FDT2   |
| 1"       | FST3              | FDT3   |

## Dimensions (in inches):

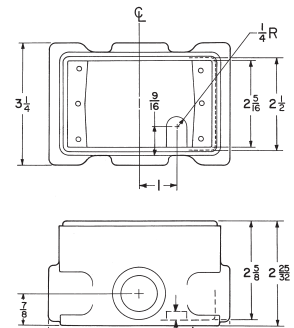
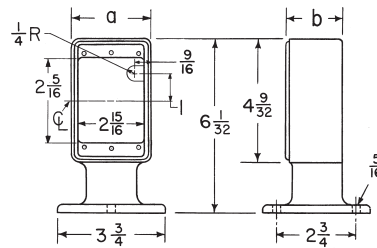


### FSX/FDX



| Hub size | Cat. # | Cat. # |
|----------|--------|--------|
| 1/2"     | FSX1   | FDX1   |
| 3/4"     | FSX2   | FDX2   |
| 1"       | FSX3   | FDX3   |

### FSCT, FSX, FST, FSDC



### FSCD<sup>⓪</sup>



| Hub size | Cat. # |
|----------|--------|
| 1/2"     | FSCD1  |
| 3/4"     | FSCD2  |

FSY

FDXC

## FSCT, FSX, FST, FSDC

| Series | Hub size | a   | b     | c       | d   |
|--------|----------|-----|-------|---------|-----|
| FS     | 1/2"     | 7/8 | 1 1/8 | 1 11/16 | 5/8 |
|        | 3/4"     | 7/8 | 1 1/8 | 1 11/16 | 3/4 |
|        | 1"       | 1   | 1 1/8 | 1 11/16 | 7/8 |

## FSY

| Description              | Hub size | a     | b       |
|--------------------------|----------|-------|---------|
| Single-gang, single face | 1"       | 2 3/4 | 1 15/16 |
| Single-gang, double face | 1"       | 2 3/4 | 3 3/8   |

<sup>H</sup> Available in copper-free aluminum. To order, add suffix 'SA' to end of catalog number.

<sup>⓪</sup> Not available with mounting lugs.

<sup>⓪⓪</sup> Six hubs – all 3/4" pipe tap.

# Condulet FS single-gang device boxes – cast iron or aluminum

With and without mounting lugs

## Ordering information (continued):

### FS double face<sup>Ⓚ</sup>



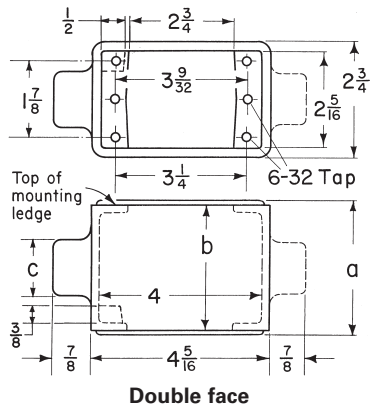
| Hub size | Cat. # |
|----------|--------|
| 1/2"     | FS152  |
| 3/4"     | FS252  |

### FSC double face<sup>Ⓚ</sup>



| Hub size | Cat. # |
|----------|--------|
| 1/2"     | FSC152 |
| 3/4"     | FSC252 |

## Dimensions (in inches):



| Series | Hub size | a                               | b                             | c                             |
|--------|----------|---------------------------------|-------------------------------|-------------------------------|
| FS     | 1/2"     | 3 <sup>5</sup> / <sub>16</sub>  | 3 <sup>1</sup> / <sub>2</sub> | 1 <sup>1</sup> / <sub>4</sub> |
|        | 3/4"     | 3 <sup>11</sup> / <sub>16</sub> | 3 <sup>1</sup> / <sub>2</sub> | 1 <sup>1</sup> / <sub>2</sub> |

<sup>Ⓚ</sup>Mounting lugs not available.

# Condulet FS and FD multi-gang device boxes – cast iron or aluminum

With and without mounting lugs for threaded rigid and IMC conduit

## Ordering information:

### FS two-gang tandem<sup>Ⓐ</sup>



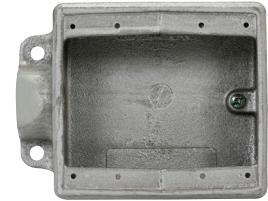
| Hub size | Cat. # |
|----------|--------|
| 1/2"     | FS17   |
| 3/4"     | FS27   |

### FSC two-gang tandem<sup>Ⓐ</sup>



| Hub size | Cat. # |
|----------|--------|
| 1/2"     | FSC17  |
| 3/4"     | FSC27  |

### FSE two-gang



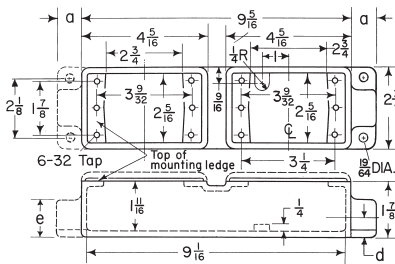
| Hub size | Cat. # |
|----------|--------|
| 3/4"     | FSE22  |

### FS/FD two-gang

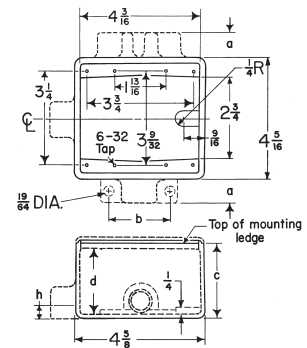


| Hub size | Cat. #            | Cat. #            |
|----------|-------------------|-------------------|
| 1/2"     | FS12 <sup>Ⓑ</sup> | FD12              |
| 3/4"     | FS22 <sup>Ⓑ</sup> | FD22 <sup>Ⓑ</sup> |
| 1"       | FS32              | FD32              |

### Dimensions (in inches):



Two-gang tandem



Two-gang

### FSC/FDC two-gang



| Hub size | Cat. # | Cat. #              |
|----------|--------|---------------------|
| 1/2"     | FSC12  | FDC12               |
| 3/4"     | FSC222 | FDC222 <sup>Ⓑ</sup> |
| 1"       | FSC32  | FDC32               |

### Two-gang tandem

| Series | Hub size | a   | d   | e     |
|--------|----------|-----|-----|-------|
| FS     | 1/2"     | 7/8 | 5/8 | 1 1/4 |
|        | 3/4"     | 7/8 | 3/4 | 1 1/2 |

### Two-gang

| Series | Hub size | a     | b       | c       | d       | h   |
|--------|----------|-------|---------|---------|---------|-----|
| FS     | 1/2"     | 7/8   | 2 1/4   | 1 7/8   | 1 11/16 | 5/8 |
|        | 3/4"     | 7/8   | 2 1/4   | 1 7/8   | 1 11/16 | 3/4 |
|        | 1"       | 1     | 2 1/2   | 1 7/8   | 1 11/16 | 7/8 |
| FD     | 1/2"     | 7/8   | 2 1/4   | 2 11/16 | 2 1/2   | 5/8 |
|        | 3/4"     | 7/8   | 2 1/4   | 2 11/16 | 2 1/2   | 3/4 |
| 1"     | 1        | 2 1/2 | 2 11/16 | 2 1/2   | 7/8     |     |

<sup>Ⓐ</sup> Use single-gang covers only.

<sup>Ⓑ</sup> Available in copper-free aluminum. To order, add suffix 'SA' to end of catalog number.



# Condulet FS and FD blank device boxes – cast iron

Blank bodies with mounting lugs for drilling and tapping  
Single-gang, multi-gang, tandem

## Applications:

Blank cast device boxes are used:

- Where several wiring devices are to be grouped together
- To assemble special combinations of wiring devices
- Where special arrangements of conduit hubs or entrances are required

## Features:

- Available in shallow (FS) or deep (FD) configurations
- FS/FD bodies have thick walls for drilling and tapping conduit entrances
- Internal green ground screw standard on boxes
- Available in single-, two-, three-, four- and five-gang, and two-gang tandem bodies
- Cast mounting lugs at diagonally opposite corners

## Certifications and compliances:

- UL standard: UL514A
- CSA standard: C22.2 No. 18

## Standard material:

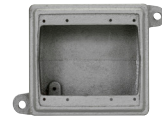
- Feraloy iron alloy

## Standard finish:

- Feraloy – electrogalvanized and aluminum acrylic paint



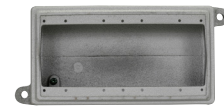
FS019, FD019 – single-gang



FS062, FD062 – two-gang



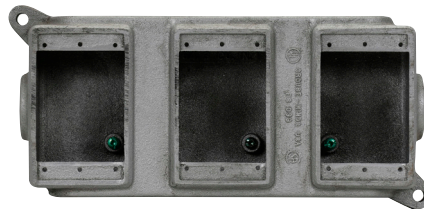
FS063, FD063 – three-gang



FS094, FD094 – four-gang



FS029, FD029 – two-gang



FS039, FD039 – three-gang



FS097, FD097 – two-gang tandem



FD04 – four-gang



FD05 – five-gang

## Ordering information:

| Description                             | Cat. #<br>Shallow | Cat. #<br>Deep     |
|---|-------------------|--------------------|
| Single-gang                             | FS019             | FD019              |
| Two-gang                                | FS029             | FD029              |
| Three-gang                              | FS039             | FD039 <sup>A</sup> |
| Four-gang                               |                   | FD04               |
| Five-gang                               |                   | FD05               |
| Two-gang (takes one two-gang cover)     | FS062             | FD062              |
| Three-gang (takes one three-gang cover) | FS063             | FD063              |
| Four-gang (takes one four-gang cover)   | FS094             | FD094              |
| Two-gang tandem                         | FS097             | FD097              |

<sup>A</sup> Available in copper-free aluminum. To order, add suffix 'SA' to end of catalog number.

# Condulet FS and FD blank device boxes – cast iron

Blank bodies for drilling and tapping  
Single-gang, multi-gang, tandem

## Ordering information:

To order one of the blank bodies with drilled and tapped holes listed on previous page, proceed as follows:

### Step 1

Select the required box.

### Step 2

Select the arrangement that meets the requirements from Table 1.

### Step 3

Determine the maximum size and spacing of conduit openings from Table 2.

### Step 4

Substitute the appropriate symbol from Table 4 for each conduit entrance, using "0" (zero) for those locations on arrangement where an entrance is not required.

### Example:

Step 1 – box required FS062

Step 2 – arrangement 1

Step 3 – conduit entrances – 1/2" at 'a'; none at 'b'; 1" at 'c' and 'd'; none at 'e' and 'f.'

Step 4 – symbols are substituted and written in alphabetical order starting with location 'a.' For this example: A0CC00.

Complete catalog number is made up of three parts:

Part 1 – box number;

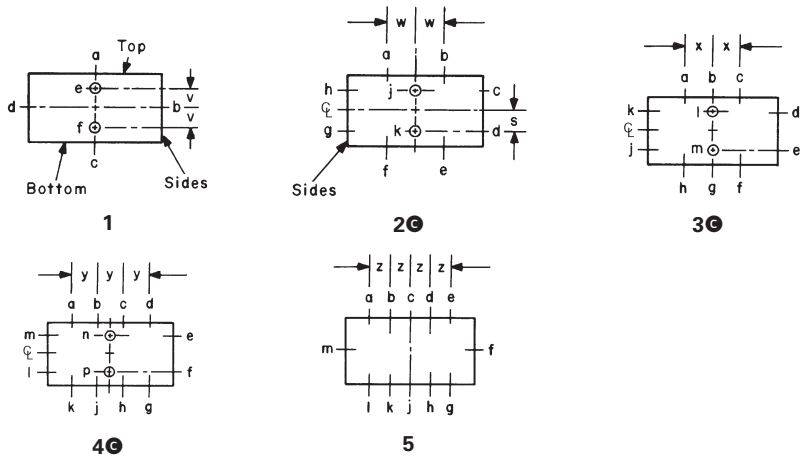
Part 2 – arrangement number;

Part 3 – symbols for conduit entrances.

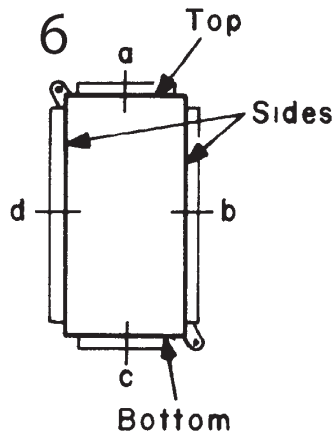
For this example: FS062-1-A0CC00.

## Table 1 – Drilling and tapping arrangements: ⑥

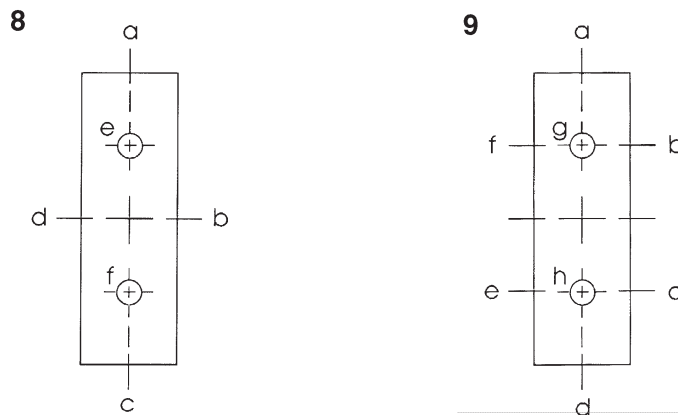
### Two-, three-, four- and five-gang



### Single-gang only (FS or FD019)



### Two-gang tandem (FS or FD097)



⑥ Drilling and tapping arrangements other than those in Table 1 are available. Consult Eaton's Crouse-Hinds Division.

⑦ If only one conduit entry is specified or permitted (see Table 2) on a side wall, that conduit entry will be centered on the wall.



# Condulet FS and FD

## cast device boxes

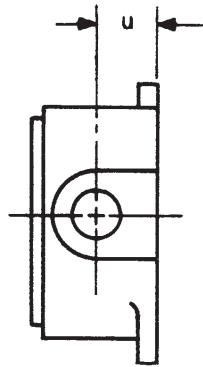
Blank bodies for drilling and tapping  
Single-gang, multi-gang, tandem

**Table 2 – Maximum number, size and spacing of conduit openings:**

| Cat. # | Maximum conduit opening size |    |    |    |    |       |    |      |          |       |       |       |       |      |
|--------|------------------------------|----|----|----|----|-------|----|------|----------|-------|-------|-------|-------|------|
|        | Top and bottom               |    |    |    |    | Sides |    | Back | Spacings |       |       |       |       |      |
|        | 1                            | 2  | 3  | 4  | 5  | 1     | 2  | 2    | s        | v     | w     | x     | y     | z    |
| FS019  | 1                            |    |    |    |    | 1     |    |      |          |       |       |       |       |      |
| FD019  | 1½                           |    |    |    |    | 1½    |    |      |          |       |       |       |       |      |
| FS029  | 1                            | 1  | 1  | ¾  |    | 1     |    |      |          | 1/8   | 1/8   | 1/16  |       |      |
| FD029  | 1½                           | 1½ | 1  | ¾  |    | 1½    |    |      |          | 1/8   | 1/8   | 1/16  |       |      |
| FS039  | 1                            | 1  | 1  | 1  | 1  | 1     |    |      |          | 3/4   | 3/4   | 2½    | 1/8   |      |
| FD039  | 1½                           | 1½ | 1½ | 1½ | 1  | 1½    |    |      |          | 3/4   | 3/4   | 2½    | 1/8   |      |
| FD04   | 1½                           | 1½ | 1½ | 1½ |    | 1½    | 1  | 1    |          | 1/16  | 1/8   | 3/4   | 3/4   |      |
| FD05   | 1½                           | 1½ | 1½ | 1½ | 1½ | 1½    | 1  | 1    |          | 1/16  | 3/4   | 3/4   | 3/4   | 3/4  |
| FS062  | 1                            | 1  | ¾  |    |    | 1     | 1  | 1    |          | 1/4   | 29/32 | 15/8  |       |      |
| FD062  | 1½                           | 1¼ | ¾  |    |    | 1½    | 1  | 1¼   | 1        | 1     | 1     | 1½    |       |      |
| FS063  | 1                            | 1  | 1  | ¾  |    | 1     | 1  | 1    |          | 1/4   | 13/16 | 13/16 | 15/8  |      |
| FD063  | 1½                           | 1¼ | 1  | ¾  |    | 1½    | 1  | 1¼   | 1        | 1     | 13/16 | 2     | 1/16  |      |
| FS094  | 1                            | 1  | 1  | 1  | ¾  | 1     | 1  | 1    |          | 1/4   | 13/16 | 13/16 | 13/16 | 15/8 |
| FD094  | 1½                           | 1½ | 1½ | 1  | ¾  | 1½    | 1  | 1    |          | 1/8   | 1½    | 25/8  | 13/16 | 15/8 |
| FS097  | 1                            | 1½ |    |    |    | 1     | 1  | 1½   |          | 1/16  | ¾     |       |       |      |
| FD097  | 1½                           | 1½ |    |    |    | 1½    | 1½ | 1½   |          | 15/16 | ¾     |       |       |      |

**Table 3 – Distance from mounting surface to center line of conduit opening ('u'):**

| Cat. # | u     |
|--------|-------|
| FS019  | 29/32 |
| FD019  | 13/8  |
| FS029  | 29/32 |
| FD029  | 13/8  |
| FS039  | 31/32 |
| FD039  | 13/8  |
| FD04   | 19/16 |
| FD05   | 19/16 |
| FS062  | 15/32 |
| FD062  | 15/8  |
| FS063  | 15/32 |
| FD063  | 15/8  |
| FS094  | 15/32 |
| FD094  | 19/16 |
| FS097  | 15/32 |
| FD097  | 19/16 |



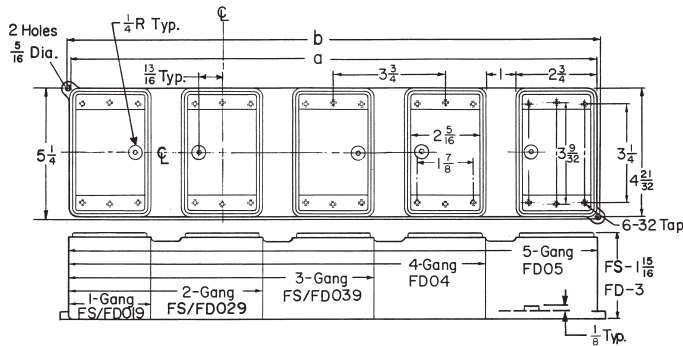
**Table 4 – Symbols for openings:**

| Hub size | Symbol |
|----------|--------|
| 1/2"     | A      |
| 3/4"     | B      |
| 1"       | C      |
| 1¼"      | E      |
| 1½"      | F      |
| None     | 0      |

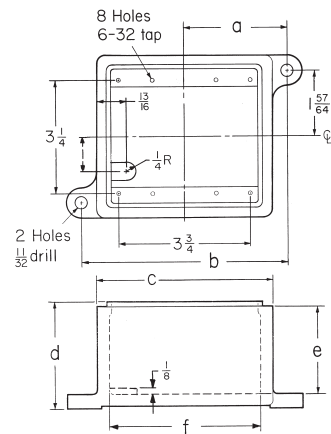
# Condulet FS and FD cast device boxes

Blank bodies for drilling and tapping  
Single-gang, multi-gang, tandem

## Dimensions (in inches):

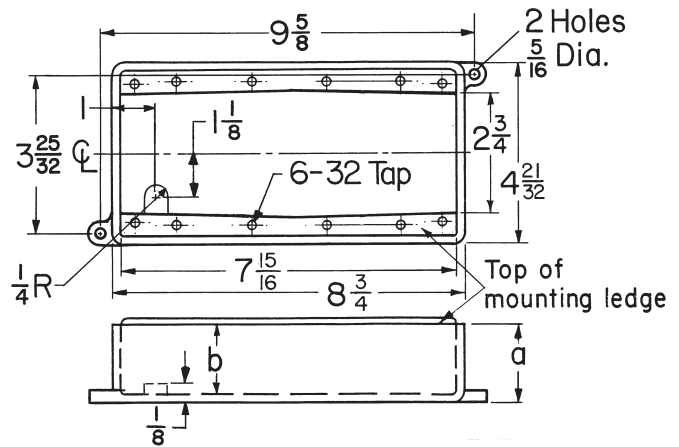


| Cat. #   | a      | b      |
|----------|--------|--------|
| FS/FD019 | 3/4    | 3/4    |
| FS/FD029 | 7      | 7      |
| FS/FD039 | 10 3/4 | 10 3/4 |
| FD04     | 14 7/8 | 15     |
| FD05     | 18 7/8 | 18 3/4 |



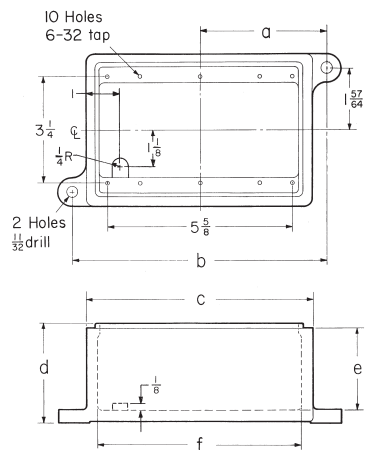
FS/FD062

| Cat. # | a       | b     | c      | d      | e     | f      |
|--------|---------|-------|--------|--------|-------|--------|
| FS062  | 2 7/8   | 5 3/4 | 5      | 2 7/16 | 1 1/2 | 4 7/8  |
| FD062  | 2 15/16 | 5 7/8 | 5 1/16 | 3 1/16 | 2 1/2 | 4 5/16 |



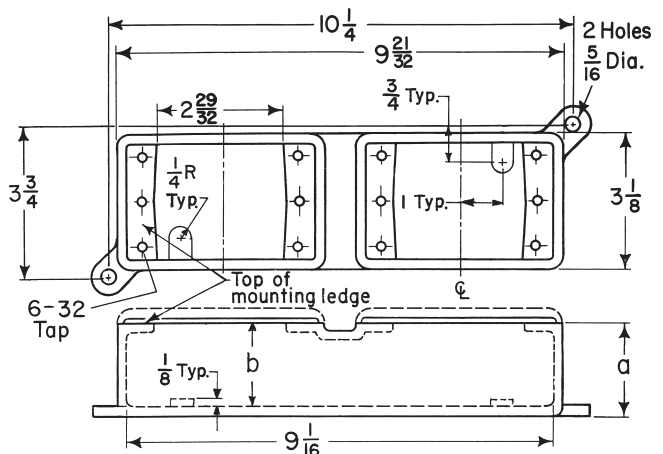
FS/FD094

| Cat. # | a      | b       |
|--------|--------|---------|
| FS094  | 2 7/16 | 1 45/64 |
| FD094  | 3      | 2 1/2   |



FS/FD063

| Cat. # | a       | b     | c      | d      | e     | f      |
|--------|---------|-------|--------|--------|-------|--------|
| FS063  | 3 13/16 | 7 7/8 | 6 7/8  | 2 7/16 | 1 1/2 | 6 1/4  |
| FD063  | 3 7/8   | 7 1/4 | 7 1/16 | 3 1/32 | 2 1/2 | 6 7/16 |



FS/FD097

| Cat. # | a      | b      |
|--------|--------|--------|
| FS097  | 2 7/32 | 1 1/2  |
| FD097  | 2 7/32 | 2 7/16 |

# Cast device boxes

## FS & FD boxes

### Applications:

Cast device boxes are installed to:

- Accommodate wiring devices
- Act as pull boxes for conductors in a conduit system
- Provide openings to make splices and taps in conductors
- Use indoors and outdoors
- Use in applications where boxes may be subjected to rough use

### Features:

- Green ground screw is located on the flange of the box for easy ground wire termination and is standard on boxes
- Suitable for use in wet locations when used with gasket and flat blank covers
- Mounting lugs standard
- Tapered threaded hubs (NPT) with integral bushing
- Available as shallow (FS) or deep (FD) configuration
- Ample wiring room provided in either FS or FD configuration
- Wide selection of surface or flush covers available in three materials (sheet malleable, steel, aluminum)
- Malleable iron construction provides high tensile strength for strong, dependable service
- Covers are individually bagged and supplied with screws



### Standard material:

- Malleable iron

### Standard finish:

- Malleable iron – zinc electroplate

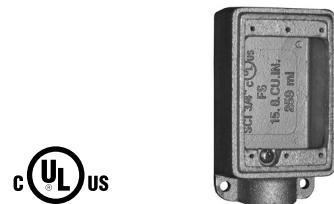
### Options:

- |                            |               |
|----------------------------|---------------|
| <b>Description</b>         | <b>Suffix</b> |
| • Hot dip galvanized ..... | <b>HDG</b>    |

### Certifications and compliances:

- cULus
- cCSAus

### FS BOXES



FSM1

| Cat. # | Size | Unit qty. | Wt. lbs. per 100 |
|--------|------|-----------|------------------|
| FSM1   | 1/2" | 5         | 222              |
| FSM2   | 3/4" | 5         | 234              |
| FSM3   | 1"   | 5         | 243              |

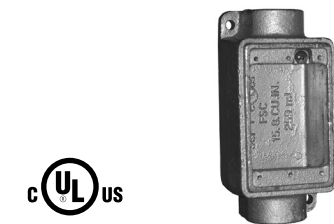
### FD BOXES



FDM1

| Cat. # | Size | Unit qty. | Wt. lbs. per 100 |
|--------|------|-----------|------------------|
| FDM1   | 1/2" | 2         | 278              |
| FDM2   | 3/4" | 2         | 273              |
| FDM3   | 1"   | 2         | 284              |

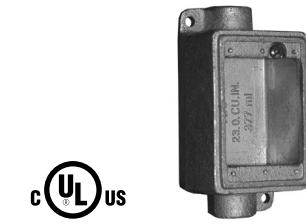
### FSC BOXES



FSCM1

| Cat. # | Size | Unit qty. | Wt. lbs. per 100 |
|--------|------|-----------|------------------|
| FSCM1  | 1/2" | 5         | 234              |
| FSCM2  | 3/4" | 5         | 241              |
| FSCM3  | 1"   | 5         | 250              |

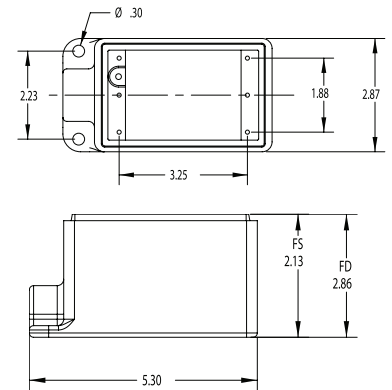
### FDC BOXES



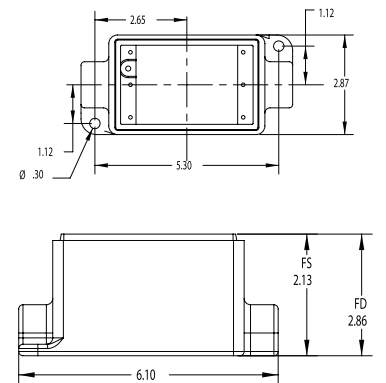
FDCM1

| Cat. # | Size | Unit qty. | Wt. lbs. per 100 |
|--------|------|-----------|------------------|
| FDCM1  | 1/2" | 2         | 313              |
| FDCM2  | 3/4" | 2         | 294              |
| FDCM3  | 1"   | 2         | 306              |

### FS & FD dimensions



### FSC & FDC dimensions

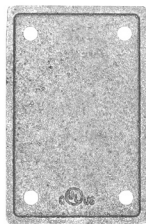


# Cast device boxes

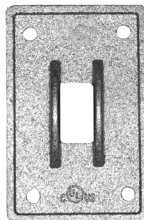
## FS & FD covers

### FS & FD COVERS – MALLEABLE

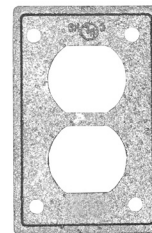
Cast device boxes



FBCM1



SWCM1



RCM1

| Cat. # | Description                            | Unit qty. | Wt. lbs. per 100 |
|--------|--|-----------|------------------|
| FBCM1  | Malleable iron flat blank cover        | 25        | 56               |
| SWCM1  | Malleable iron switch cover            | 25        | 63               |
| RCM1   | Malleable iron duplex receptacle cover | 25        | 55               |

### FS & FD COVERS – STEEL



FBCS1



SWCS1



RCS1



GFICS1

| Cat. # | Description                   | Unit qty. | Wt. lbs. per 100 |
|--------|-------------------------------|-----------|------------------|
| FBCS1  | Steel flat blank cover        | 25        | 18               |
| SWCS1  | Steel switch cover            | 25        | 16               |
| RCS1   | Steel duplex receptacle cover | 25        | 13               |
| GFICS1 | Steel GFCI cover              | 25        | 12               |

### FS & FD COVERS – ALUMINUM



FBCA1



FSGSK1

| Cat. # | Description               | Unit qty. | Wt. lbs. per 100 |
|--------|---------------------------|-----------|------------------|
| FBCA1  | Aluminum flat blank cover | 25        | 9                |

| Cat. # | Description     | Unit qty. | Wt. lbs. per 100 |
|--------|-----------------|-----------|------------------|
| FSGSK1 | Neoprene gasket | 25        | 3.5              |

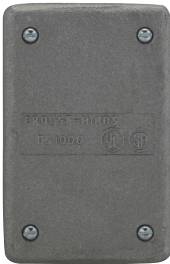
# Single-gang covers for cast iron or aluminum device boxes

## Ordering information:



Blank cover for enclosing splices and taps where device not used

| Description | Material       | Cat. # |
|-------------|----------------|--------|
| Surface     | Sheet aluminum | DS100  |
| Flush       | Sheet steel    | DSS100 |



Blank cover with gasket for enclosing splices and taps where device not used

| Description      | Material      | Cat. # |
|------------------|---------------|--------|
| Surface or flush | Cast aluminum | DS100G |



DS21



DS21G

For standard and 3-pole, 2-wire grounding type round flush receptacles; opening diameter 1<sup>1</sup>/<sub>16</sub>"

| Description      | Material                       | Cat. #  |
|------------------|--------------------------------|---------|
| Surface          | Sheet steel                    | DS21    |
| Surface          | Sheet aluminum                 | DS21 SA |
| Surface or flush | Feraloy iron alloy with gasket | DS21G   |



For GFI receptacles

| Description | Material    | Cat. #   |
|-------------|-------------|----------|
| Surface     | Sheet steel | DS23 GFI |



For flush plug receptacle requiring 1<sup>5</sup>/<sub>16</sub>" opening diameter

| Description | Material    | Cat. # |
|-------------|-------------|--------|
| Surface     | Sheet steel | DS35   |



For duplex convenience receptacles

| Description | Material       | Cat. #  |
|-------------|----------------|---------|
| Surface     | Sheet steel    | DS23    |
| Surface     | Sheet aluminum | DS23 SA |
| Flush       | Sheet steel    | DSS23   |



For standard and 3-pole, 2-wire grounding type duplex convenience receptacles; gasket included

| Description      | Material           | Cat. # |
|------------------|--------------------|--------|
| Surface or flush | Feraloy iron alloy | DS23G  |



For square handle general use snap or toggle switches; unguarded

| Description | Material       | Cat. #  |
|-------------|----------------|---------|
| Surface     | Sheet steel    | DS32    |
| Surface     | Sheet aluminum | DS32 SA |



For square handle general use snap or toggle switches; guarded

| Description      | Material                       | Cat. # |
|------------------|--------------------------------|--------|
| Surface or flush | Feraloy iron alloy with gasket | DS32G  |
| Surface          | Sheet steel                    | DS52   |



Adapter plate for mounting WLRs/WLRD covers to flush device boxes

| Description          | Cat. # |
|----------------------|--------|
| Flush device adapter | WLRA1  |

**Note:** Also can be used to mount all covers with four corner screws listed to flush device boxes.

# Single-gang covers for cast iron or aluminum device boxes

Raintight

2F

Raintight covers<sup>A</sup> (gasket included)

## Ordering information:



For general use snap switches; includes gasket

| Description                   | Material             | Cat. #       |
|-------------------------------|----------------------|--------------|
| For standard ON-OFF operation | Copper-free aluminum | <b>DS181</b> |



For general use snap switches; includes gasket

| Description                                       | Material          | Cat. #       |
|---|-------------------|--------------|
| For standard ON-OFF operation; with hole for lock | Die cast aluminum | <b>DS185</b> |



For general use snap switches; includes gasket

| Description                                  | Material      | Cat. #       |
|--|---------------|--------------|
| For standard operation; marked ON-OFF handle | Cast aluminum | <b>DS128</b> |

<sup>A</sup>Raintight cover includes operator lever only. Switch not included.

# Single-gang covers for cast iron or aluminum device boxes

Raintight

2F  
2F

Switch and motor control pushbutton covers

## Ordering information:



For manual motor starting switches; fits FS and FD boxes; takes Westinghouse switches MST01 (1-pole) and MST02 (2-pole); includes gasket

| Description                   | Material           | Cat. #       |
|-------------------------------|--------------------|--------------|
| For standard ON-OFF operation | Feraloy iron alloy | <b>DS199</b> |



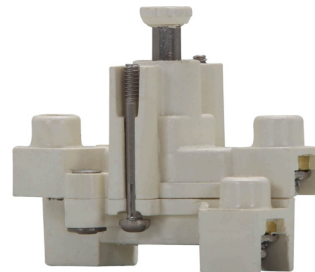
Furnished with buttons for operating motor control pushbutton switches; includes gasket

| Description  | Pushbuttons |       |                    | Cat. #          |
|--|-------------|-------|--------------------|-----------------|
|  | No.         | Color | Material           |                 |
| Button (normally open) marked START  | 1           | Green | Feraloy iron alloy | <b>DS171F</b> ① |
| Button (normally closed) marked STOP   | 1           | Red   | Feraloy iron alloy | <b>DS171G</b> ① |
| Button (normally open) marked START and button (normally closed) marked STOP | 1           | Green | Feraloy iron alloy | <b>DS171</b> ①  |

| Description    | No. | Color | Material           | Cat. #          |
|----------------|-----|-------|--------------------|-----------------|
| Two pushbutton | 2   | Black | Feraloy iron alloy | <b>DS171J</b> ① |

① If desired, markings on indicating plates may be added to catalog number. Select from the list of standard markings below:

|         |       |      |         |       |       |
|---------|-------|------|---------|-------|-------|
| HAND    | CLOSE | OFF  | AUTO.   | UP    | RUN   |
| EMER.   | DOWN  | JOG  | FORWARD | START | RESET |
| REVERSE | STOP  | TRIP | OPEN    | ON    | TEST  |
| LGT. ON |       |      |         |       |       |



Heavy duty motor control pushbutton switch

| No. of buttons | Normal positions     | Cat. #        |
|----------------|----------------------|---------------|
| 1              | 1 circuit universal  | <b>ED11</b>   |
| 2              | 2 circuits universal | <b>ED12</b> ② |

DS covers use the switches shown in the list below:

| Cover  | Takes switch | Cover  | Takes switch |
|--------|--------------|--------|--------------|
| DS171  | ED12         | DS171F | ED11         |
| DS171G | ED11         | DS266  | ED12         |
| DS265  | ED11         |        |              |

① Covers include operating lever or button only. Switch not included.

② Two universal contact blocks; must be wired as two circuits, with one normally open and one normally closed.

# Single-gang covers for cast iron or aluminum device boxes

Weatherproof

2F

## DS receptacles and WP plugs

### Applications:

DS receptacles and WP plugs are used:

- Wherever dust, dirt, moisture and corrosion are a problem
- Outdoors or in locations where frequent wash downs occur, as in dairies and food processing plants

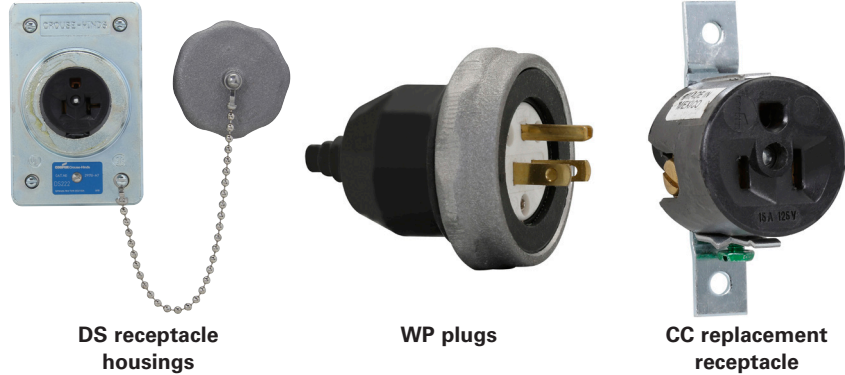
### Features:

DS receptacle housings are used:

- With FS and FD cast device boxes, either surface mounted or installed flush in a wall
- With single-gang, two-gang tandem and multi-gang boxes having individual cover openings
- A threaded cap which effectively seals housing when not in use

WP plugs include:



- A molded neoprene hood with integral sleeve to seal the cord entrance
- An aluminum ring which clamps the hood to receptacle housing face, to complete watertight seal when plug is in use



### Ordering information:

#### Grounding type receptacles

For plugs with U shaped or round grounding contacts

| Rating       | Cat. #<br>Cover with<br>recept. | NEMA<br>configuration   | Style             | Cat. #<br>Plug | NEMA<br>configuration   | Cord<br>dia.      | Cat. #<br>Repl.<br>recept. |
|--------------|---------------------------------|---|-------------------|----------------|---|-------------------|----------------------------|
| 20A,<br>125V | DS222                           |  5-20R | 2-wire,<br>3-pole | WP832          |  5-20P | 0.500 -<br>0.625" | CC71                       |

### Certifications and compliances:

- UL standards: UL498; UL514A
- NEMA/EEMAC: WD-1; WD-5
- CSA standard: C22.2 No. 42

### Standard materials:

- Receptacle housings – body: Feraloy iron alloy; cap: copper-free aluminum
- Plug exteriors – hood: neoprene; fastening ring: copper-free aluminum

### Standard finishes:

- Feraloy iron alloy – electrogalvanized and aluminum acrylic paint
- Copper-free aluminum – natural
- Neoprene – natural (black or yellow)

### Electrical ratings:

- 20 amperes, 125 volts



# Single-gang covers for cast iron or aluminum device boxes

Pilot light covers, extensions and adapters

## Ordering information:



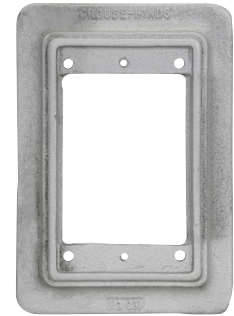
For pilot light units  
(furnished with jewels)

| Description | Material    | Jewel color | Cat. # |
|-------------|-------------|-------------|--------|
| Surface     | Sheet steel | Red         | DS24   |



Pilot light (with transformer)<sup>A</sup>;  
FD only

| Circuit voltage | Lamp base  | Watts | Cat. # |
|-----------------|------------|-------|--------|
| 440             | Candelabra | 6     | C333   |



FS flush mounting adapter  
(can be used with multi-gang bodies  
having individual cover openings);  
furnished with gasket and screws

| Mounting style | Cat. # |
|----------------|--------|
| Wall           | FS031  |



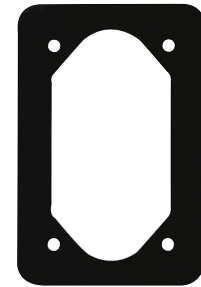
For pilot light units  
(furnished with jewel and gasket)

| Description      | Material           | Jewel color | Cat. # |
|------------------|--------------------|-------------|--------|
| Surface or flush | Feraloy iron alloy | Red         | DS24G  |



EXF extensions  
(takes covers and flush rectangular  
wiring devices, or plug receptacles with  
housings)

| Ext. depth | Cat. # |
|------------|--------|
| 1"         | EXF11  |
| 2 1/2"     | EXF21  |



Gasket for use between device boxes  
and covers

| Material | Cat. #              |
|----------|---------------------|
| Neoprene | GASK91 <sup>B</sup> |



Pilot light unit (without transformer)

| Circuit voltage | Lamp base  | Watts | Cat. # |
|-----------------|------------|-------|--------|
| 110             | Candelabra | 6     | C3310  |

<sup>A</sup>Transformer 50-60 cycle, 440/110 volts.  
<sup>B</sup>Not recommended as watertight.

# Two-gang covers for cast iron or aluminum device boxes

## Ordering information:



For flush general use snap switches with square handles; hole diameter 1<sup>11/32</sup>"

| Material    | Cat. # |
|-------------|--------|
| Sheet steel | S32232 |



For duplex convenience receptacles, standard and 2-wire, 3-pole grounding; hole diameter 1<sup>11/32</sup>"

| Description | Material    | Cat. # |
|-------------|-------------|--------|
| Surface     | Sheet steel | S232   |



For 20A, 250V receptacles; hole diameter 2<sup>5/32</sup>"

| Description     | Material    | Cat. # |
|-----------------|-------------|--------|
| 2-pole, surface | Sheet steel | S612   |



For flush general use snap switches with square handles; hole diameter 1<sup>13/32</sup>"

| Description                               | Material    | Cat. # |
|---|-------------|--------|
| For round plug flush receptacles; surface | Sheet steel | S32212 |



For GFI receptacles; rectangular height 2<sup>5/8</sup>"; rectangular width 1<sup>5/16</sup>"

| Description | Material    | Cat. #   |
|-------------|-------------|----------|
| Surface     | Sheet steel | S232 GFI |



Blank; Feraloy iron alloy with gasket

| Description      | Material             | Cat. #    |
|------------------|----------------------|-----------|
| Surface          | Sheet steel          | S1002     |
| Surface or flush | Feraloy iron alloy   | S1002G    |
| Surface or flush | Copper-free aluminum | S1002G SA |



For standard and 2-wire, 3-pole grounding; hole diameter 1<sup>13/32</sup>"

| Description                               | Material    | Cat. # |
|---|-------------|--------|
| For round plug flush receptacles; surface | Sheet steel | S212   |



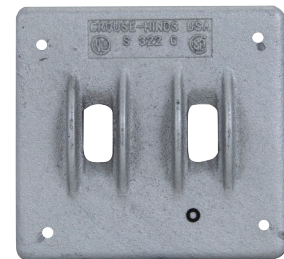
For round flush receptacles (hole diameter 1<sup>13/32</sup>"); duplex convenience receptacles, standard and 2-wire, 3-pole grounding (hole diameter 1<sup>11/32</sup>"

| Description | Material    | Cat. # |
|-------------|-------------|--------|
| Surface     | Sheet steel | S21232 |



For flush general use snap switches with square handles

| Description | Material    | Cat. # |
|-------------|-------------|--------|
| Surface     | Sheet steel | S322   |



For flush general use snap switches with square handles

| Description      | Material           | Cat. # |
|------------------|--------------------|--------|
| Surface or flush | Feraloy iron alloy | S322G  |

# Multi-gang covers for cast iron or aluminum device boxes

## Ordering information:

### Two-gang



With operating mechanism and gasket

| Description  | Material           | Cat. # |
|--|--------------------|--------|
| Two-gang; for operation of general use snap switches; surface or flush | Feraloy iron alloy | DS1282 |

### Three-gang



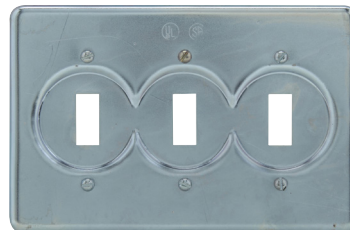
With operating mechanism and gasket

| Description   | Material           | Cat. # |
|---|--------------------|--------|
| Three-gang with gasket; for external operation of general use snap switches; surface or flush | Feraloy iron alloy | DS1283 |



Blank with gasket included

| Description      | Material             | Cat. #    |
|------------------|----------------------|-----------|
| Surface          | Sheet steel          | S1003     |
| Surface or flush | Feraloy iron alloy   | S1003G    |
| Surface or flush | Copper-free aluminum | S1003G SA |



For flush general use snap switches with square handles

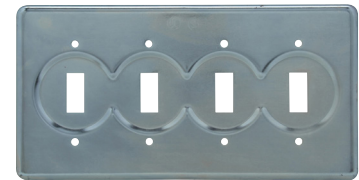
| Description         | Material    | Cat. # |
|---------------------|-------------|--------|
| Three-gang; surface | Sheet steel | S323   |

### Four-gang



Blank with gasket included

| Description      | Material           | Cat. # |
|------------------|--------------------|--------|
| Surface or flush | Feraloy iron alloy | S1004G |



For flush general use snap switches with square handles

| Description        | Material    | Cat. # |
|--------------------|-------------|--------|
| Four-gang; surface | Sheet steel | S324   |

## Gaskets



Gasket for use between device box and cover

| Description | Material | Cat. #  |
|-------------|----------|---------|
| Two-gang    | Rubber   | GASK434 |
| Three-gang  | Rubber   | GASK460 |
| Four-gang   | Rubber   | GASK461 |