

VXF and GRF outlet boxes, covers and gaskets

Applications:

VXF and GRF cast outlet boxes are installed in threaded rigid conduit systems to:

- Act as junction boxes
- Act as pull outlets
- Accept round base wiring devices and covers intended for use on 4" outlet boxes (GRF boxes only)
- Act as ceiling or wall mounting for Vaporgard™ lighting fixtures (VXF boxes)
- Mount enclosed and gasketed lighting fixtures: ARB fixture hangers (GRF boxes)

Features:

VXF:

- Compact, shallow design
- Takes GRF covers
- Multiple tapped conduit openings and pipe plugs for versatility
- Four hubs and three plugs on VXF10 and VXF20
- Five hubs and four plugs on VXFT10 and VXFT20

GRF:

- Surface mounting; flush mounting can be obtained by nailing box to concrete form through mounting lug
- Drilled mounting lugs
- Four conduit bosses spaced 90° apart on sides and one boss on back
- Blank or drilled and tapped bodies (with four side bosses tapped and plugged, plus blank back boss)

Certifications and compliances:

- UL standard: UL514A (boxes and covers only)
- CSA standard: C22.2

Standard materials:

- VXF – copper-free aluminum
- GRF – Feraloy iron alloy or copper-free aluminum

Standard finishes:

- VXF – epoxy enamel
- GRF – electrogalvanized and aluminum acrylic paint

Options:

| Description | Suffix |
|----------------------------|------------|
| • Hot dip galvanized | HDG |

Available on GRF bodies and covers only

Ⓐ VXFT has hubs on four sides and back; VXF has hubs on four sides only.

Ⓑ Not available with hot dip galvanized finish.

See Section 6F for complete listing of lighting fixtures and hangers.

Ordering information:

VXF tapped surface with lugs

4 hubs, 3 plugsⒶ



| Hub size | Cat. # |
|----------|--------|
| 1/2" | VXF10 |
| 3/4" | VXF20 |

Surface with lugs

5 hubs, 4 plugsⒶ



| Hub size | Cat. # |
|----------|--------|
| 1/2" | VXFT10 |
| 3/4" | VXFT20 |

GRF blank surface with lugs



| Inside depth | Cat. # |
|--------------|--------|
| 1 3/8" | GRF19 |
| 1 15/16" | GRF29 |
| 3 1/8" | GRF39 |

GRFX tapped surface with lugs

4 hubs, 3 plugs
Blank back boss



| Inside depth | Size tap | Cat. # Iron | Cat. # Aluminum |
|--------------|----------|-------------|-----------------|
| 1 3/8" | 1/2" | GRFX119 | GRF119 |
| 1 3/8" | 3/4" | GRFX219 | GRF219 |
| 2 1/16" | 1/2" | GRFX129 | GRF129 |
| 2 1/16" | 3/4" | GRFX229 | GRF229 |
| 2 1/16" | 1" | GRFX329 | GRF329 |
| 3 1/8" | 1/2" | GRFX139 | GRF139 |
| 3 1/8" | 3/4" | GRFX239 | GRF239 |
| 3 1/8" | 1" | GRFX339 | GRF339 |

GRF blank cover



| Description | Cat. # Iron | Cat. # Aluminum |
|-------------|-------------|-----------------|
| Surface | GRF10Ⓑ | GRF110 |

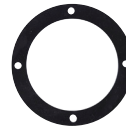
GRF hub covers



Fixture weight to 125 lbs.

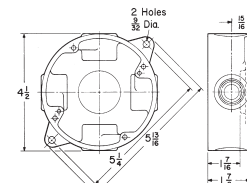
| Description | Size | Cat. # Iron | Cat. # Aluminum |
|-------------|------|-------------|-----------------|
| Surface | 1/2" | GRF11 | GRF11 SA |
| Surface | 3/4" | GRF12 | GRF12 SA |

GRF gasket

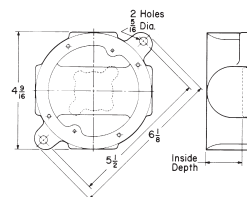


| Description | Cat. # |
|-------------|---------|
| Neoprene | GASK643 |

Dimensions (in inches):



VXF-VXFTⒷ



GRF-GRFX

Stainless steel fittings

VXF junction boxes

Applications:

For use where high quality, durable products that withstand corrosion, chemical treatments and wash downs are required, including:

- Wastewater treatment plants
- Food and beverage facilities
- Pharmaceutical plants
- Pulp and paper mills
- Mines

VXF stainless steel junction boxes are installed in threaded rigid conduit systems to:

- Act as junction boxes for making terminations
- Act as pull outlets

Features:

VXF junction box

Includes:

- Four tapped conduit openings with three 316 stainless steel installed recessed hex plugs
- Four 1/4-20 x 1" stainless steel hex head bolts for mounting box to surface
- One 10-32 x 1/4" installed green ground screw with slotted head

VXF hub cover

Includes:

- Fixture rated up to 130 lbs. with VXF body
- Neoprene gasket
- Four 1/4-20 x 5/8" stainless steel hex head bolts and lock washer for cover attachment to box
- One 10-24 x 5/8" Phillips pan head set screw

VXF blank cover

Includes:

- Neoprene gasket
- Four 1/4-20 x 5/8" stainless steel hex head bolts for cover attachment to box
- GRF10SS comes with PVC protective peel off coating

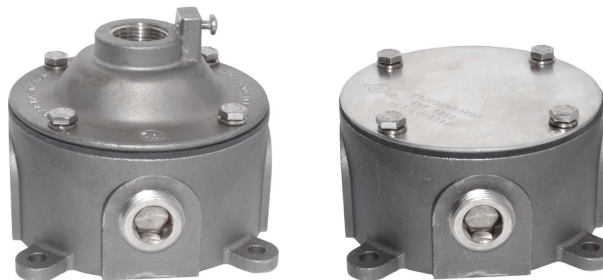
GRF replacement gasket

Includes:

- Neoprene gasket

Certifications and compliances:

- UL/cUL Listed, File No. E-15022
- NEC/CEC
 - Class I, Division 2
 - Class II, Divisions 1 & 2
 - Class III
- Fixture rated (with pendant cover)
- UL514A
- Wet locations
- NEMA 4X
- Assembled in the USA



Standard materials:

- Body, plugs and cover – 316 stainless steel
- Nuts and washers – stainless steel
- Gasket – neoprene

Standard finishes:

- Body, plugs, nuts and washer – natural
- GRF10SS – natural with #4 brushed finish

VXF JUNCTION BOXES



| Cat. # | Description |
|---------|---------------------------|
| VXF20SS | 3/4" X style junction box |
| VXF30SS | 1" X style junction box |

VXF HUB COVER



| Cat. # | Description |
|---------|--------------------------------|
| VXF12SS | 3/4" pendant cover with gasket |

VXF BLANK COVER



| Cat. # | Description |
|---------|------------------------|
| GRF10SS | Flat cover with gasket |

GRF REPLACEMENT GASKET



| Cat. # | Description |
|---------|-----------------|
| GASK643 | Neoprene gasket |