

# Cast Device Boxes

For Rigid Conduit & IMC

**Types**

**FS - Shallow**

**FD - Deep**

**Use:**

Accommodates wiring devices and provides opening to splice, tap or pull conductors.

**Features:**

- Tapered threaded hubs (NPT) with integral bushings.
- Both FS and FD styles are deeper than similar boxes, providing greater internal volume.
- Internal grounding screw standard on all boxes.
- Mounting feet standard on FS, FD, FSC, FDC, FSA and FDA styles. FS/FD boxes without mounting lugs may be supported by the attached conduits per NEC Section 314-23(E).
- Available single gang, two gang and tandem styles.
- Suitable for use in wet locations when used with gasketed covers.
- Gray Iron is suitable for concrete use.
- For use with FS style covers on Pages AE3 and AE4 as well as standard device plates made of steel, brass, bakelite, etc.


**Material/Finish:**


Gray Iron/Zinc Electroplated/Aluminum Enamel.  
Copper-free Aluminum/Aluminum Enamel.

**Optional Finish:**

For additional corrosion protection, specify Hot Dip Galvanized. Add suffix "G" to Gray Iron catalog number. Contact your local representative for pricing and availability.

**Third Party Certification:**

 UL Listed: E-18095  
Raintight-Suitable for wet locations when used with gasketed covers.  
See pages AE3 and AE4.

 CSA Certified: 009795  
Raintight-Suitable for wet locations when used with gasketed covers.  
See pages AE3 and AE4.

**Dimensional Data:**

See page AE6.

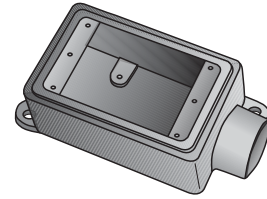
**Applicable Third Party Standards:**

Trade Size (inches)	Catalog Number Gray Iron	Catalog Number Aluminum
1/2	FS-1-50	FS-1-50A
3/4	FS-1-75	FS-1-75A
1	FS-1-100	
1/2	FD-1-50	FD-1-50A
3/4	FD-1-75	FD-1-75A
1	FD-1-100	
1/2	FSC-1-50	FSC-1-50A
3/4	FSC-1-75	FSC-1-75A
1	FSC-1-100	
1/2	FDC-1-50	FDC-1-50A
3/4	FDC-1-75	FDC-1-75A
1	FDC-1-100	
1/2	FSL-1-50	
3/4	FSL-1-75	
1/2	FDL-1-50	
3/4	FDL-1-75	
1/2	FSR-1-50	
3/4	FSR-1-75	
1/2	FDR-1-50	
3/4	FDR-1-75	
1/2	FSS-1-50	FSS-1-50A
3/4	FSS-1-75	FSS-1-75A
1/2	FSA-1-50	
3/4	FSA-1-75	
1/2	FDA-1-50	
3/4	FDA-1-75	

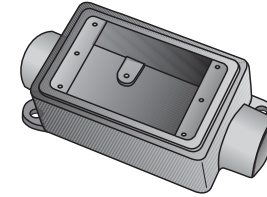
UL Standard: 514A  
CSA Standard: C22.2 No. 18  
Fed Spec: A-A-50563  
NEMA: FB-1

**Suggested Specifications:**

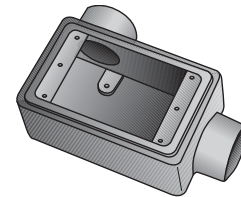
Where cast device boxes are required for mounting wiring devices or splicing, taps or pulling conductors, they are zinc electroplated gray iron with aluminum enamel or copper-free aluminum. They are UL Listed and CSA Certified for wet locations when used with gasketed covers.



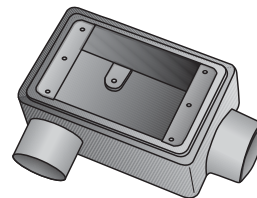
**Type FS & FD**  
Single Gang with mounting feet



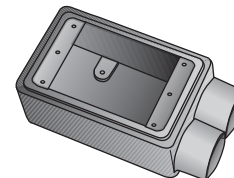
**Type FSC & FDC**  
Single Gang with mounting feet



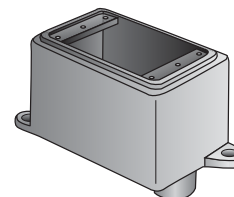
**Type FSL & FDL**  
Single Gang without mounting feet



**Type FSR & FDR**  
Single Gang without mounting feet



**Type FSS**  
Single Gang without mounting feet



**Type FSA & FDA**  
Single Gang with mounting feet