

Conduit Unions

Type UNF

Female/Female

Type UNY

Male/Female

Use:

For joining conduits, or conduit to enclosures or other devices, without rotation of conduits, etc. Allows future access and removal of system components.

Features:

- Threaded for Rigid Conduit or IMC
- Tapered threads (NPT)
- ½" - 1" Raintight
- UNY style supplied with removable close nipple

Material/Finish:

Types UNF/UNY

½" - 1" Steel/Zinc Electroplated

1¼" - 6" Malleable Iron/Zinc Electroplated

Types UNF-A/UNY-A

½" - 6" Copper Free Aluminum

Optional Material: (½"-1")

Stainless Steel. Add suffix "SS" to base catalog number. Example: UNF-50SS.

Contact your local representative for pricing and availability.

Optional Finish: (1¼"-6" Iron)

Hot Dip or Mechanical Galvanize. Add Suffix "G" to Malleable Iron catalog number. Contact your local representative for pricing and availability.

Third Party Certification:



UL Listed: E-34997

½" to 1" UL Listed for:

Class I, Div. 1, 2, Groups A, B, C, D

Class I, Zone 1, 2, Groups IIA, IIB, IIC

Class II, Div. 1, 2, Groups E, F, G

Class III

1½" to 6" UL Listed for:

Class I, Div. 1, 2, Groups B, C, D

Class I, Zone 1, 2, Groups IIA, IIB + H₂

Class II, Div. 1,2, Groups E, F, G

Class III



CSA Certified: 009795

(Specific items where noted are not CSA Certified)

Applicable Third Party Standards:

UL Standard: 886

CSA Standard: C22.2 No. 30

NEC Articles 500-503 & 505

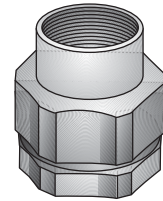
Mil. Spec: Mil-F28675

Trade Size (inches)	Catalog Number	Dimension in Inches	
		Overall Lgth	Max. Dia.
Steel			
½	UNF-50S	1¼	1½
¾	UNF-75S	1¾	1⅞
1	UNF-100S	2	2⅛
Malleable Iron			
1¼	UNF-125	2¼	2¾
1½	UNF-150	2½	3⅛
2	UNF-200	2⅞	3¾
2½	UNF-250	3⅞	4¼
3	UNF-300	3⅞	5
3½	UNF-350	4½	5½
4	UNF-400	4½	6⅞
5	UNF-500	4½	8¼
6	UNF-600	4½	9½
Copper Free Aluminum			
½	UNF-50A	1¼	1½
¾	UNF-75A	1¾	1 ²⁹ / ₃₂
1	UNF-100A	2	2⅛
1¼	UNF-125A	2¼	2¾
1½	UNF-150A	2½	3⅛
2	UNF-200A*	2⅞	3⅞
2½	UNF-250A*	3⅞	4¼
3	UNF-300A*	3⅞	5
3½	UNF-350A*	4½	5⅞
4	UNF-400A*	4½	6⅞
5	UNF-500A	4½	8¼
6	UNF-600A	4½	9½

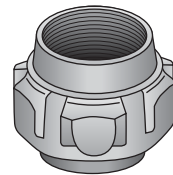
* Not CSA Certified

Trade Size (inches)	Catalog Number	Dimension in Inches	
		Overall Lgth	Max. Dia.
Steel			
½	UNY-50S	2¼	1½
¾	UNY-75S	2¼	1⅞
1	UNY-100S	2½	2⅛
Malleable Iron			
1¼	UNY-125	3⅞	2¾
1½	UNY-150	3⅞	3⅛
2	UNY-200	3¾	3¾
2½	UNY-250	4⅞	4¼
3	UNY-300	5	5
3½	UNY-350	5½	5½
4	UNY-400	5½	6⅞
5	UNY-500	6⅞	8¼
6	UNY-600	6⅞	9½
Copper Free Aluminum			
½	UNY-50A	2¼	1½
¾	UNY-75A	2¼	1⅞
1	UNY-100A	2½	2⅛
1¼	UNY-125A	3⅞	2¾
1½	UNY-150A	3⅞	3⅛
2	UNY-200A*	3¾	3⅞
2½	UNY-250A*	4⅞	4¼
3	UNY-300A*	5	5
3½	UNY-350A*	5½	5⅞
4	UNY-400A*	5½	6⅞
5	UNY-500A	6⅞	8¼
6	UNY-600A	6⅞	9½

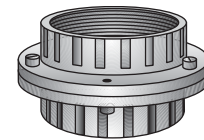
* Not CSA Certified



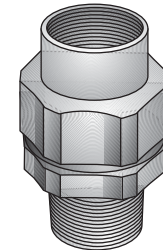
Type UNF-50S – Type UNF-100S



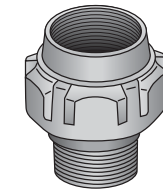
Type UNF-125 – Type UNF-400



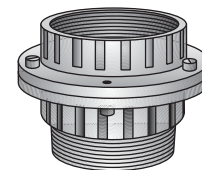
Type UNF-500 – Type UNF-600



Type UNY-50S – Type UNY-100S



Type UNY-125 – Type UNY-400



Type UNY-500 – Type UNY-600