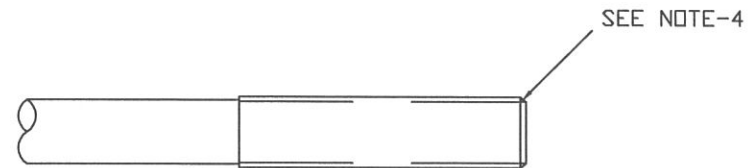
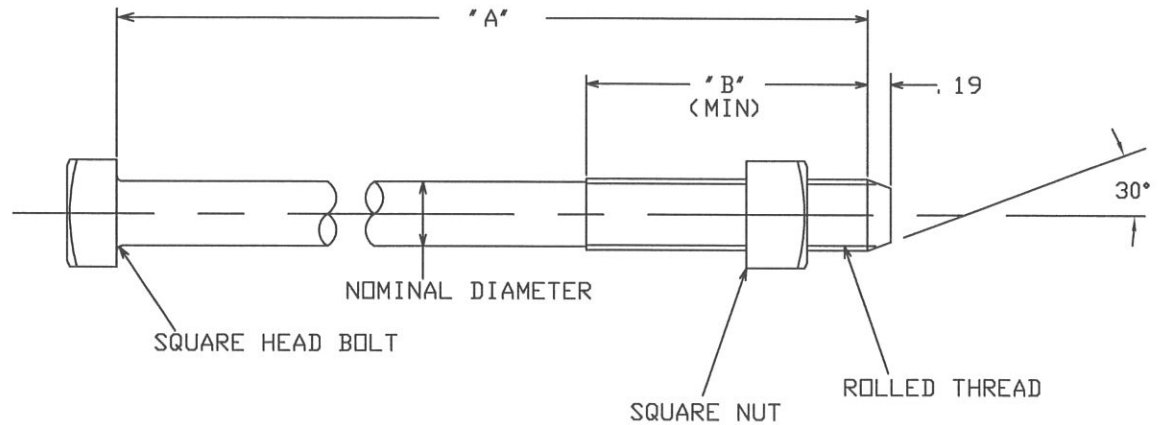


BOLT HEADS WILL HAVE  
MANUFACTURERS ID MARK ON  
HEAD.



-NOTES-

1. HOT DIP GALVANIZED PER ASTM A153 (LATEST REVISION).
2. BOLT MATERIAL: STEEL CONFORMING TO THE FOLLOWING PROPERTIES:
  - MINIMUM ASSEMBLY STRENGTH OF 7,800 LBS.
  - UNTHREADED PORTION CAPABLE OF BEING BENT AROUND A MANDREL WITHOUT CRACKING
3. NUT DIMENSIONS PER ASME/ANSI B18.2.2. NUTS TAPPED AFTER GALVANIZING.
4. BOLTS UNDER 4' LONG SHALL BE AS SHOWN IN ASME B18.2.1 (LATEST REVISION).

Catalog #	Comm. Code	Description	Nominal Dia	Thread	A	B
	400-013-462	Bolt, machine, 1/2" x 1-1/4"	1/2"	1/2"-13 UNC-2A	1.25	1.125
8701-1/2		Bolt, machine, 1/2" x 1-1/2"	1/2"	1/2"-13 UNC-2A	1.5	1.25
	400-013-470	Bolt, machine, 1/2" x 1-3/4"	1/2"	1/2"-13 UNC-2A	1.75	1.25
8702		Bolt, machine, 1/2" x 2"	1/2"	1/2"-13 UNC-2A	2	1-3/4
	400-013-488	Bolt, machine, 1/2" x 2-1/2"	1/2"	1/2"-13 UNC-2A	2.5	2-1/4
8703		Bolt, machine, 1/2" x 3"	1/2"	1/2"-13 UNC-2A	3	2.5
T206-0413		Bolt, machine, 1/2" x 3-1/2"	1/2"	1/2"-13 UNC-2A	3.5	3
8704-1/2	400-013-496	Bolt, machine, 1/2" x 4-1/2"	1/2"	1/2"-13 UNC-2A	4.5	3
8704-3/4		Bolt, machine, 1/2" x 4-3/4"	1/2"	1/2"-13 UNC-2A	4.75	3
8705	T206-0532	Bolt, machine, 1/2" x 5"	1/2"	1/2"-13 UNC-2A	5	3
C205-0004		Bolt, machine, 1/2" x 5-1/2"	1/2"	1/2"-13 UNC-2A	5.5	3
8706	400-013-504	Bolt, machine, 1/2" x 6"	1/2"	1/2"-13 UNC-2A	6	3
8707		Bolt, machine, 1/2" x 7"	1/2"	1/2"-13 UNC-2A	7	3
8708		Bolt, machine, 1/2" x 8"	1/2"	1/2"-13 UNC-2A	8	4
8709		Bolt, machine, 1/2" x 9"	1/2"	1/2"-13 UNC-2A	9	4
8710		Bolt, machine, 1/2" x 10"	1/2"	1/2"-13 UNC-2A	10	4
8711		Bolt, machine, 1/2" x 11"	1/2"	1/2"-13 UNC-2A	11	4
8712		Bolt, machine, 1/2" x 12"	1/2"	1/2"-13 UNC-2A	12	6
8714		Bolt, machine, 1/2" x 14"	1/2"	1/2"-13 UNC-2A	14	6
DF2B16		Bolt, machine, 1/2" x 16"	1/2"	1/2"-13 UNC-2A	16	6

CHANCE  
TOLERANCE CHART



HUBBELL POWER SYSTEMS

TITLE  
BOLTS, MACHINE  
1/2"

CONFIDENTIAL: THIS DRAWING AND ITS  
CONTENTS ARE CONFIDENTIAL AND THE  
EXCLUSIVE PROPERTY OF HUBBELL  
POWER SYSTEMS. NO PUBLICATION,  
DISTRIBUTION OR COPIES MAY BE MADE  
WITHOUT THE WRITTEN CONSENT OF  
HUBBELL POWER SYSTEMS.  
HUBBELL POWER SYSTEMS UNPUBLISHED  
ALL RIGHTS RESERVED UNDER THE  
COPYRIGHT LAWS.

SIZE	DWG NO.	CAT / PART / ASSY NO.	REV
SB	SA8702	SEE CHART	B
DO NOT SCALE THIS DRAWING	DRN BY DMB	DATE 11/02/12	SHEET 1 OF 1