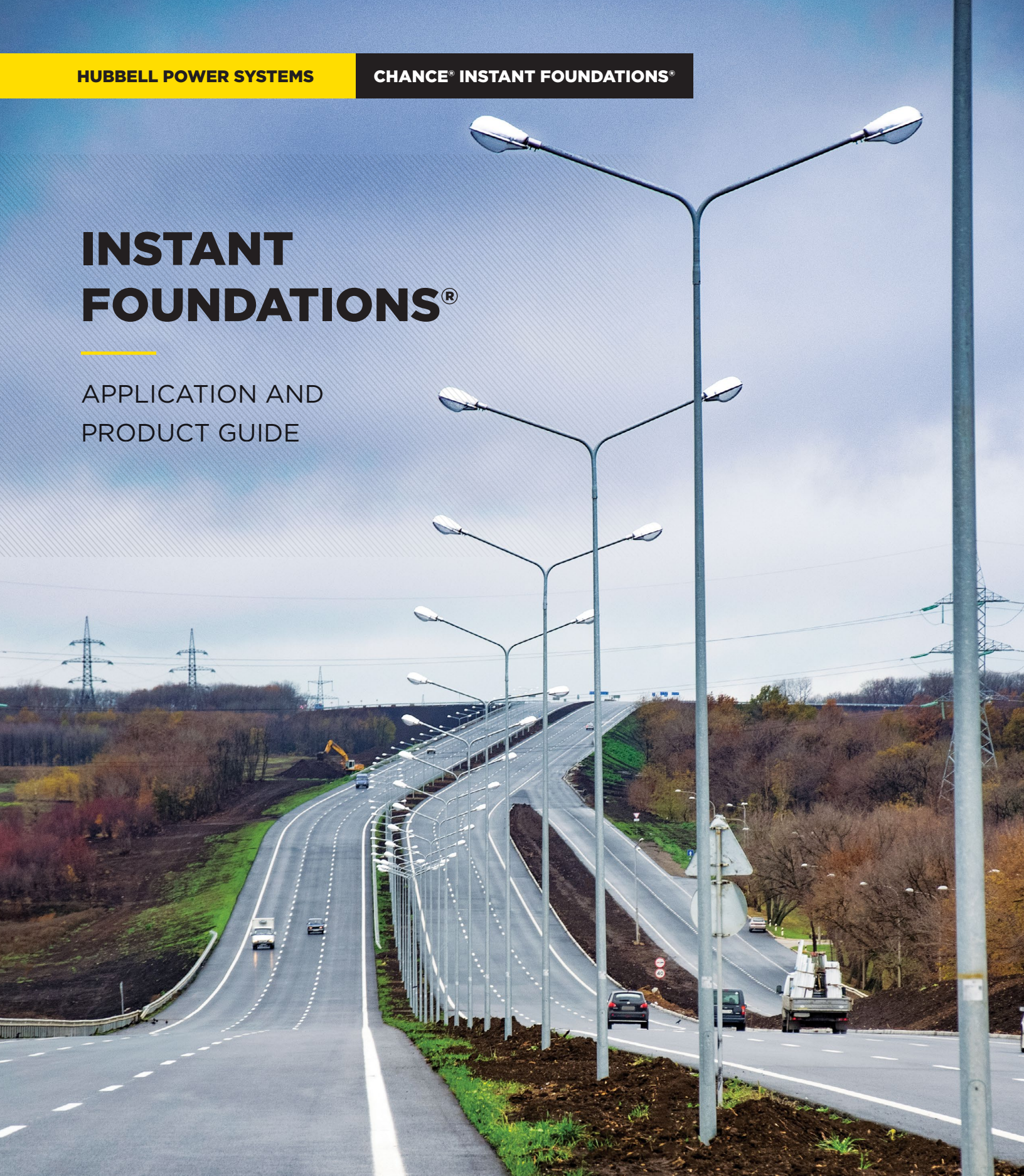


INSTANT FOUNDATIONS®

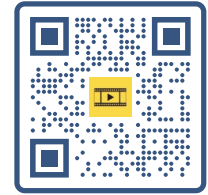
APPLICATION AND
PRODUCT GUIDE





CONTENTS

- Introduction 3
- Benefits 4
- Buy America 5
- Available Resources 5
- Roadway Lighting & Signage 6
- Commercial Area Lighting 7
- Residential & Park Lighting 8
- EV Charging Infrastructure 9
- Railway Signage & Structures 10
- Communications & Small Cell Poles 11
- Equipment Protection 12
- Other Applications 14
- Typical Tooling String 15
- Kelly Bar Adapter 16
- Drive Tool 17
- Bolt Circle Adapter 17
- Product Catalog Numbers 18
- Hardware Catalog Numbers 18
- Equipment Protection Catalog Numbers 19



[Click](#) or scan to watch a short installation video.

DISCLAIMER

This catalog is provided as a guide to assist in product identification only. The information contained is for general information purposes only. The information is provided by Hubbell Power Systems, Inc. (“HPS”), and while we endeavor to keep the information up to date and correct, we make no representations or warranties of any kind, express or implied, about the completeness, accuracy, reliability, suitability or availability with respect to the catalog or the information, products, services, or related graphics contained in the catalog for any purpose. Any reliance you place on such information is therefore strictly at your own risk and HPS shall not be responsible for the adoption, revision, implementation, use or misuse of this information or its products herein. HPS recommends an independent engineering analysis of the installation (including soil and structure) conditions to determine the appropriate product for the intended use.

CONTACT US

Hubbell Power Systems, Inc.
 210 North Allen Street
 Centralia, MO 65240

civilconstruction@hubbell.com
 (573) 682-5521
 www.chancefoundationsolutions.com

INTRODUCTION

INSTANT FOUNDATIONS are one-piece steel screw-in foundations that provide cableways allowing for easy wiring in numerous applications, including:

- Roadway Lighting
- Site and Area Lighting
- Sports Lighting
- Decorative Lighting
- EV Charging Infrastructure
- Bollards
- Signage
- Solar Array Pole Mount
- Rail Signals and Structures
- Small Cell Communications Poles
- End Zone Tower System

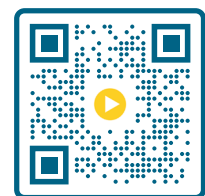
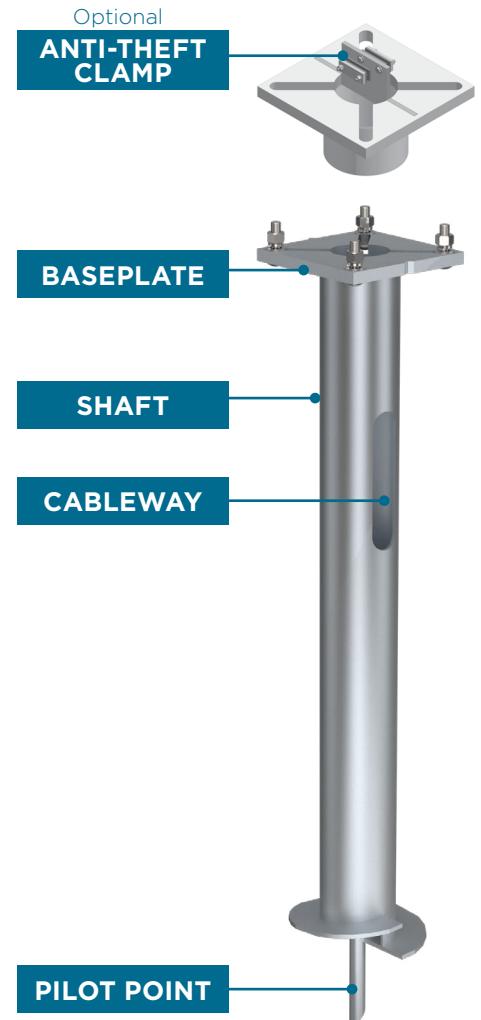
Designed for above-grade and at-grade mounting, these foundations have high strength pipe shafts that resist bending moments and provide excellent lateral capacity.

The original lighting foundation prototypes were developed by A.B. Chance Company in the late 1960's, and Chance® Instant Foundations® continue to be an economical solution for all pole-base foundation requirements.

Chance foundation product features include:

- Wire holes up to 2" conduit on standard products. Larger conduit openings may be available pending engineering review. 6" and larger foundations have a minimum of 2.5" wide slot for a 2" NPS conduit (2.375" OD) to pass.
- Variable Bolt Circle Style allows for fast bolt-up as the slotted design mates with most light standards.
- Designed for mounting in minutes - matching any base design.
- Compliant with AASHTO Standard Specifications for Structural Supports for Highway Signs, Luminaires and Traffic Signals.
- All components are Hot-Dip Galvanized per ASTM 123 and/or ASTM 153 3 mi.
- Ground lug hole option available - no ground rod needed.

THE CHANCE TEAM is always available to answer your questions. If you need any assistance, including quotes or design help, email civilconstruction@hubbell.com to get connected to your Hubbell Regional Manager.



[Click](#) or scan to watch Engineered Advantages of Instant Foundations

BENEFITS OVER OTHER TECHNOLOGIES

Chance Instant Foundations reduce manpower, material, and mess. See below for a comparison between Instant Foundations and other methods for pole installation.

FULL INSTALLATION IN LESS THAN AN HOUR

	Step 1	Step 2	Step 3	Step 4	Step 5	Step 6
Conventional Concrete Base						
Concrete "Drop-in-Place" Slug						
Chance Instant Foundations						

CHANCE HELICAL PILE INSTALLATION VS. OTHER FOUNDATION TYPES

Benefit	Chance Instant Foundation	Poured in place	Direct Buried Pole	Concrete "Drop-in-Place" Slug
Install during all types of weather	✓			
Install in below freezing temps	✓			
Protect against frost heave	✓			
Can be salvaged for reuse when lighting standard is relocated	✓			✓
Low installation costs: 10 minutes with a two-person crew	✓			
No expensive anchor bolts	✓		✓	
No misaligning anchor bolts	✓		✓	
Clean, no-excavation installation	✓			
Job done with one trip to the job site	✓		✓	✓
No requirement for leveling side slope of right-of-way	✓			
Turn-key solution where no concrete or rebar is required	✓		✓	✓
Use the same installing equipment that augers holes	✓		✓	✓
Higher production rate with immediate pole attachment	✓			✓
High overturning moment resistance	✓	✓		✓

BUY AMERICA

Certain Hubbell Power Systems product groups meet the current Federal Highway Administration's Buy America requirements. Be sure to provide all Buy America requirements when placing your order, including mounting hardware requirements. Mounting hardware is typically included with the foundation, but may be excluded from Buy America orders.

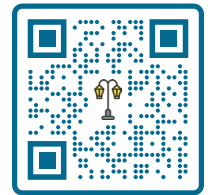
To receive certifications of compliance or to request information on compliance with FHWA or other government requirements, contact Hubbell customer service at 573.682.5521 or email civilconstruction@hubbell.com to get connected with your Hubbell Regional Manager.



AVAILABLE RESOURCES

SELECT-A-BASE

Our Select-A-Base™ lighting base program can help you match the correct Lighting Base for different soils, wind loads, overturning moment and vertical loading. The software is free and easy to use on-line at www.hpsapps.com/base

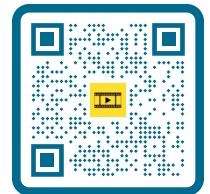


[Click](#) or scan for Select-A-Base

VIDEO LIBRARY

We have several videos that highlight the benefits and installation steps of Chance Instant Foundations. All are available on Hubbell TV, found at <https://videos.hubbellpowersystems.com>

Click on “Helical Piles - Chance Foundation Solutions” in the sidebar or type “Instant” in the search bar for available videos.



[Click](#) or scan for Hubbell TV

ADDITIONAL READING

Check out our blog for more information on foundation installation tips, case studies, engineering articles and more. Filter by topic to find the information that most interests you.

ENGINEERING SUPPORT

In addition to Select-A-Base, our experienced engineering team is available to assist you with any foundation design questions you may have. Contact the team by emailing civilconstruction@hubbell.com to get connected with your Hubbell Regional Manager.

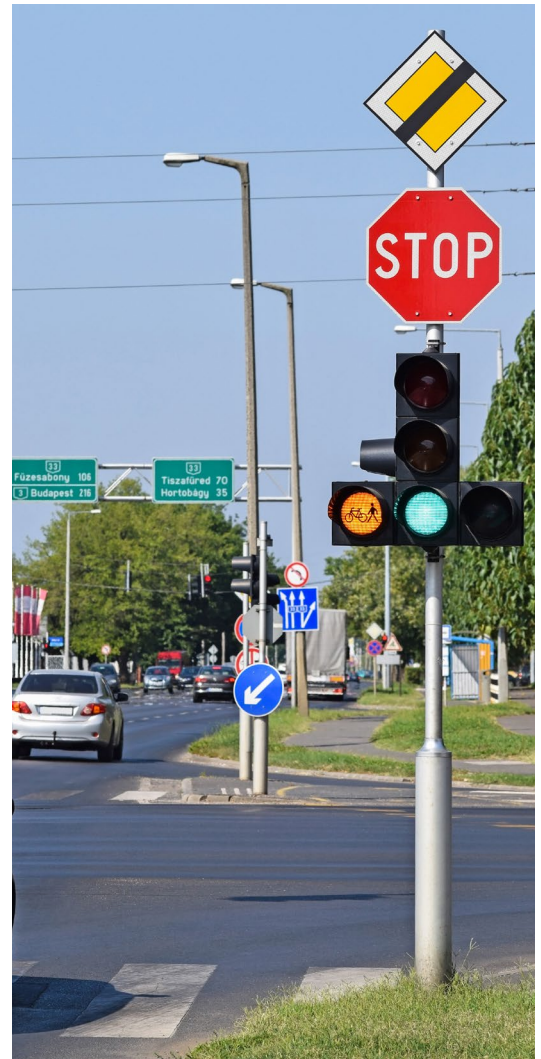
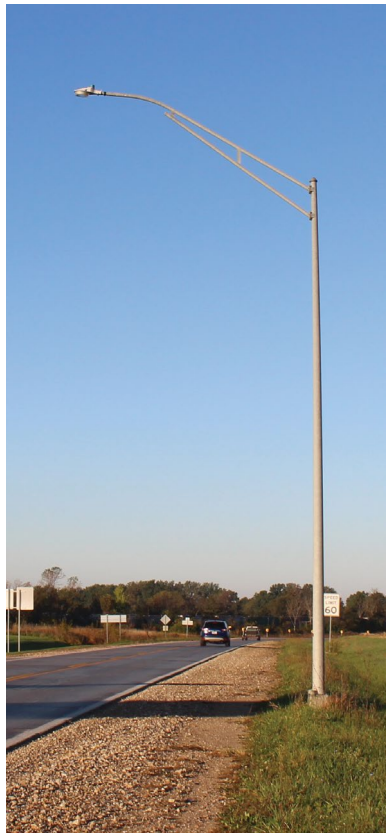
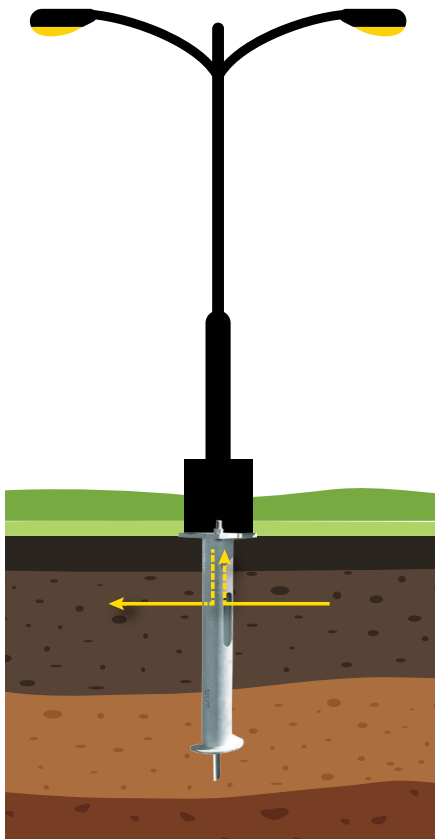


[Click](#) or scan for the blog.



ROADWAY LIGHTING & SIGNAGE

Approved for use by many state DOTs, Instant Foundations are in compliance with American Association of State Highway and Transportation Officials (AASHTO) Section 13.0 of the Standard Specification for Structural Supports for Highway Signs, Luminaries, and Traffic Signals. These one-piece foundation bases have high-strength pipe shafts to resist bending moments and have substantial installing-torque ratings. The foundation can be installed or backed out, reducing lane closure time.



Typical Foundation Sizes		
Diameter	Length	Bolt Circle
6"	4', 5', 7'	8" - 14"
8"	5', 7', 10'	8-¾" - 14"
10"	5', 7', 10'	13-½" - 17"

COMMERCIAL AREA LIGHTING

Whether adding lighting to an existing site or developing a new one, Instant Foundations are a time-tested proven solution that can be installed year-round and loaded immediately. Also, add the precast collar option for additional protection for a clean finished look without the hassle and mess of pouring and finishing concrete.



Typical Foundation Sizes		
Diameter	Length	Bolt Circle
4"	4'8"	6" - 14"
6"	4', 5', 7'	8" - 14"
8"	5', 7', 10'	8-¾" - 14"
10"	5', 7', 10'	13-½" - 17"



RESIDENTIAL AND PARK LIGHTING

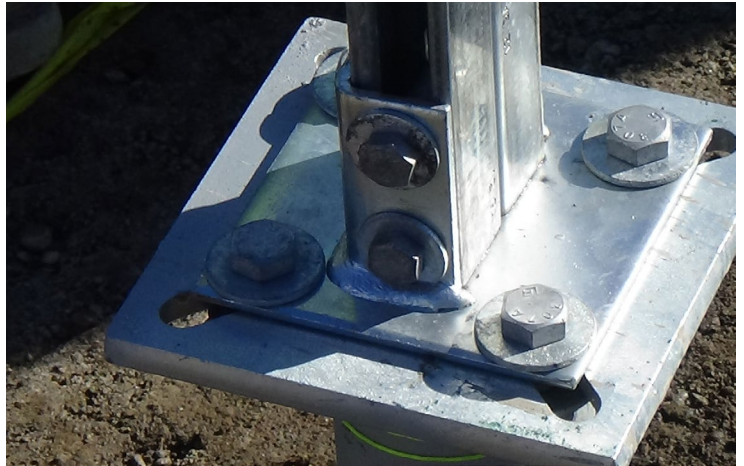
Say goodbye to the complication and mess of concrete pole base foundations! With a two-person crew, an Instant Foundation can be screwed into the ground in 10 minutes without excavation. Popular in residential and park settings, Instant Foundations install quickly without damage to the environment.



Typical Foundation Sizes		
Diameter	Length	Bolt Circle
4"	5'	6" - 14"
6"	4', 5', 7'	8" - 14"
8"	5', 7', 10'	8- ³ / ₄ " - 14"
10"	5', 7', 10'	13- ¹ / ₂ " - 17"

EV CHARGING INFRASTRUCTURE

As we prepare our roadways and neighborhoods for electric vehicle technology, Chance Instant Foundations provide a fast-installing and sustainable foundation solution. The sturdy steel top plate is adaptable for various mounting options for easy mounting of a variety of EV charger brands.

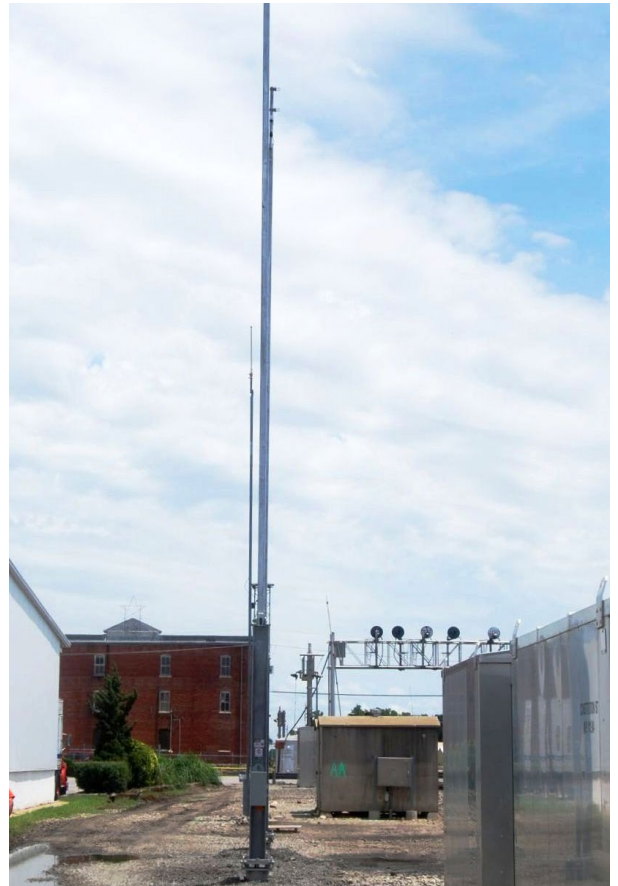


[Click](#) or scan to learn about EV Infrastructure Solutions.



RAILROAD STRUCTURES

The rail industry poses many challenges including year-round operation in all weather conditions and remote locations that may be inaccessible by road. The Chance Instant Foundation can be installed regardless of weather and transported to remote locations to support a variety of structures and signals.



COMMUNICATIONS AND SMALL CELL POLES

Vital communications infrastructure is being installed and updated all over the world and Chance foundations are widely used to support 5G/6G poles and discrete small cell installations. They are a fast and reliable solution to support today's communications needs.

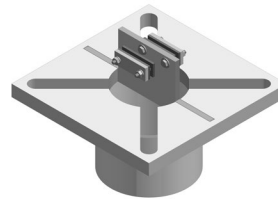


Typical Foundation Sizes		
Diameter	Length	Bolt Circle
8"	5', 7', 10'	8-¾" - 14"
10"	5', 7', 10'	13-½" - 17"

EQUIPMENT PROTECTION

ANTI-THEFT CLAMP

A device designed to stop the theft of copper wire, a clamping mechanism prevents the wire from being pulled out of the ground through the baseplate. Hubbell offers anti-theft devices for both new installations and retrofit of existing applications.



COLLARS

PRECAST: Designed to enhance the appearance and functionality of Instant Foundations, Chance Precast Concrete Collars are an ideal ready-made solution. Available in two heights, Precast Concrete Collars drop onto the Instant Foundation's base and the pole is ready to mount. With no concrete to cure, the collars can be installed in any weather and are ready to use immediately after installation.

POUR-IN-PLACE: When a precast collar is not an option, you can pour a concrete collar around the foundation on the job site.

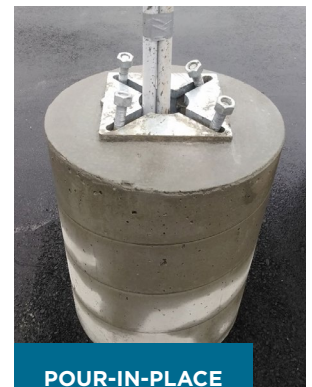


KEY BENEFITS:	CHANCE	Traditional Concrete
No site casting concrete required	✓	
Consistent architectural concrete appearance	✓	
Single trip to job site	✓	
All-weather installation speed	✓	
Green-friendly - Relocate & Reuse	✓	
Proven pre-engineered design	✓	
Cost efficiency	Save 10-25% over Concrete*	

*Depending on local labor rates



PRECAST



POUR-IN-PLACE

See page 19 for catalog numbers and product details for equipment protection products.

BUMPER POSTS

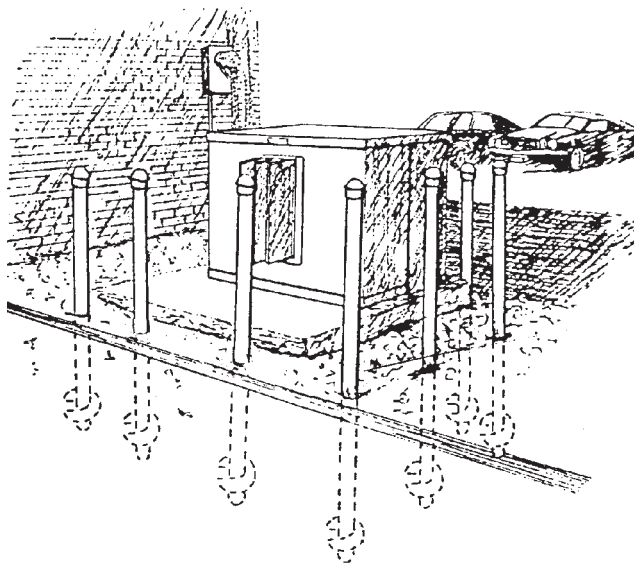
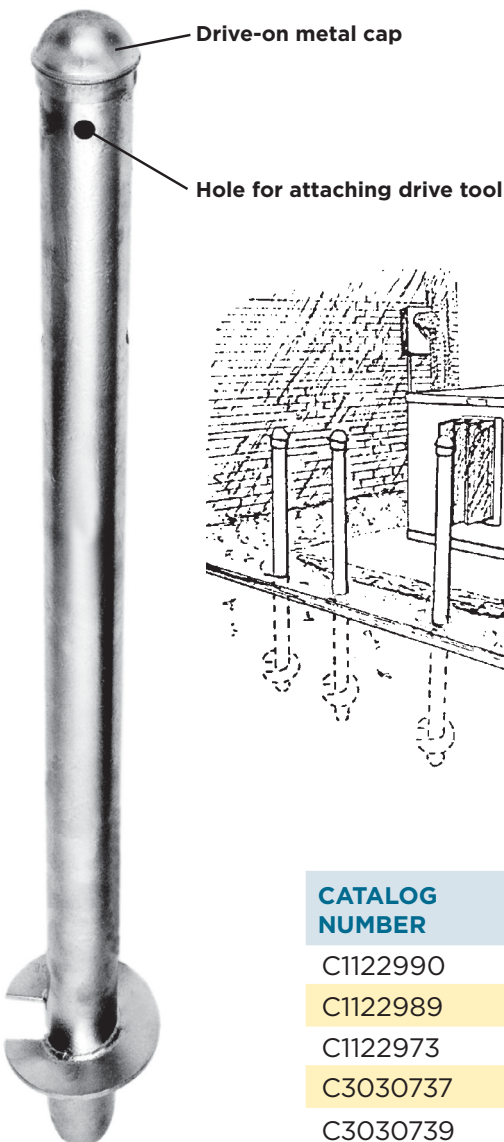
Protect transformers, switchgear, EV chargers, and more. Installation in minutes regardless of weather conditions. The hot-dip galvanized corrosion-resistant finish provides a long lasting solution for equipment protection applications. Speciality tooling may be required for Bumper Post installation.

8,000 ft-lb typical working torque

Tools are available which bolt directly to Chance Kelly bar adapters or which can be used with Chance locking dog assembly.

Order C3030737 for Kelly bar attachment or C3030739 for use with locking dog assembly. Bumper Post is inserted into drive tool and held by the provided bent-arm pin.

Power-Installed Design



C3030737



C3030739

CATALOG NUMBER	DESCRIPTION
C1122990	Bumper Post, 8" Helix, 3-1/2" OD x 60" Shaft
C1122989	Bumper Post, 8" Helix, 3-1/2" OD x 75" Shaft
C1122973	Bumper Post, 8" Helix, 3-1/2" OD x 84" Shaft
C3030737	Installation Tool, Kelly Bar Attachment
C3030739	Installation Tool, Locking Dog Assembly Attachment

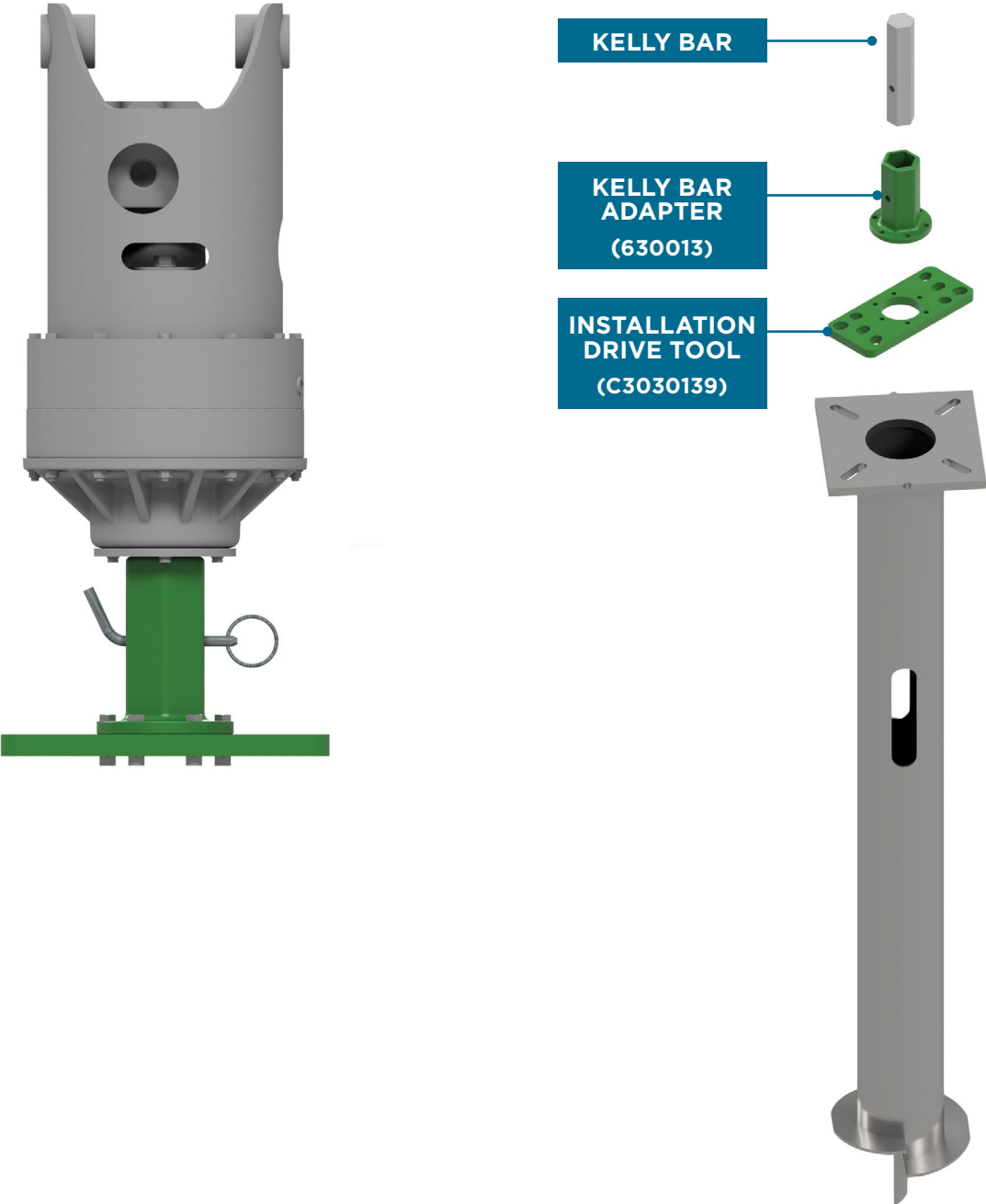
OTHER APPLICATIONS

Ideal for areas with limited access while providing a low environmental impact installation. Chance foundations can provide permanent or temporary solutions for a variety of structures including those in solar fields, substations, oil and gas production, and more.



TYPICAL TOOLING STRINGS FOR INSTANT FOUNDATIONS

Engineered for dependability and long-term stability, Hubbell manufactures top-quality tools to ensure your crews are ready to properly and safely install Instant Foundations.

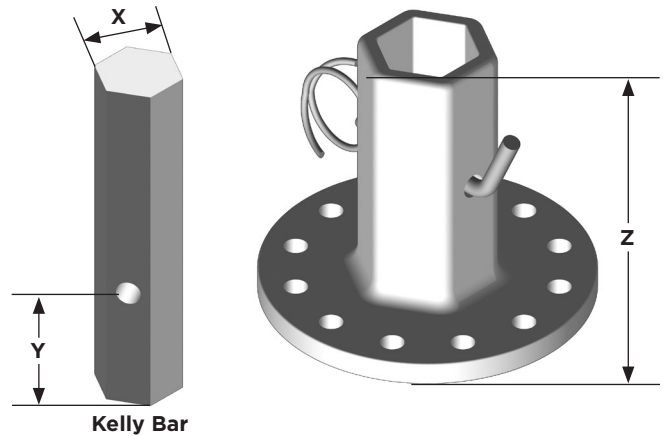


KELLY BAR ADAPTER

Selecting the correct Kelly bar adapter is key to building a proper drive string.

Follow these two easy steps:

1. Remove the auger from the driver and carefully measure the X and Y dimensions of the Kelly bar.
2. Match the shape of the Kelly bar and the X and Y dimensions with the Kelly bar adapter charts below. The Y dimension on the Kelly bar adapter must be equal to or greater than the Y dimension on the intended Kelly bar.



A Note about Bolt Circles

Chance installing tools are provided with appropriate bolt circles for the expected service. The torque limitations for the two standard bolt circles are given in the chart. **Never exceed the rated torque of any Chance installing tool.**

KELLY BAR ADAPTER CAT. NO.	USE WITH DRIVE TOOL	BOLT CIRCLE DIA.	KELLY BAR SHAPE	MAX. INSTALL TORQUE (FT-LB)	DIMENSIONS			BOLTS*
					X	Y	Z	
630017	C3030139	5-1/4"	Square	10,000	2-1/4"	2-1/4"	3-1/2"	(6) 1/2" Grade 5 bolts
630013	C3030139	5-1/4"	Hex	10,000	2"	5"	6-1/8"	(6) 1/2" Grade 5 bolts
630013A	C3030139	5-1/4"	Hex	10,000	2"	3-1/4"	6-1/8"	(6) 1/2" Grade 5 bolts
630012HD	C3030139	5-1/4"	Hex	10,000	2-5/8"	4-1/4"	8-1/8"	(6) 1/2" Grade 5 bolts
630011HD	C3030139	5-1/4"	Hex	10,000	2-1/2"	4-1/4"	8-1/8"	(6) 1/2" Grade 5 bolts
C3030936	C3030684	7-5/8"	Hex	12,000	2-1/2"	4-3/8"	8-1/4"	(12) 5/8" Grade 5 bolts
C3030937	C3030684	7-5/8"	Hex	15,000	2-5/8"	4-3/8"	8-1/4"	(12) 5/8" Grade 5 bolts
C3030940	C3030684	7-5/8"	Hex	25,000	3"	3-1/2"	8"	(12) 5/8" Grade 5 bolts
C3030955	C3030684	7-5/8"	Square	17,000	2-1/2"	2-1/4"	7"	(12) 5/8" Grade 5 bolts
C3030958	C3030684	7-5/8"	Square	20,000	3"	3-1/2" & 2-1/16"	7"	(12) 5/8" Grade 5 bolts
C3030739	C3030737	7-5/8"	Square	10,000	For Bumper Posts only			(6) 1/2" Grade 5 bolts

* In addition to the number of bolts indicated, all Chance Kelly bar adapters come with the appropriate quantity of nuts and lock washers, as well as the required bent-arm pin with coil lock. Additional hardware is available for purchase. See page 19.

DRIVE TOOL

The Universal Tools fit foundation anchors with 9" thru 13-1/2" bolt circles.

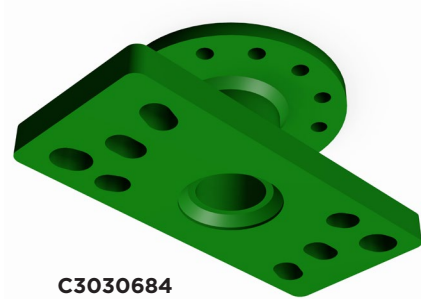
The Decorative Lighting Tool has a 10" diameter drive plate which fits an 8" bolt circle.

CATALOG NUMBER	DESCRIPTION	MAX. TORQUE RATING (FT-LB)	BOLT CIRCLE	HOLES	HARDWARE INCLUDED
C3030139	Universal Tool	10,000	5-1/4"	(6) tapped holes	(6) 1/2" bolts
C3030684*	Universal Tool	20,000	7-5/8"	(12) drilled holes	(12) 5/8" bolts
T3030247	Decorative Lighting Tool	10,000	5-1/4"	(6) 1/2" tapped holes	(6) 1/2" bolts
C3030737	Bumper Post Tool	10,000	5-1/4"	(6) holes	(6) 1/2" bolts

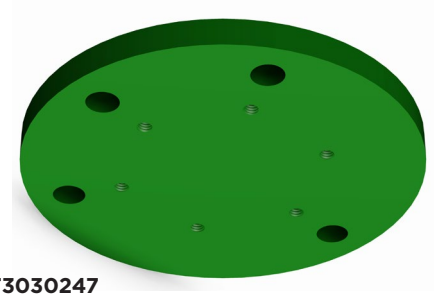
*Coupling C3030684 to a Kelly bar adapter with a 5-1/4" bolt circle requires use of T303166N adapter (below) and limits tool's maximum torque rating to 10,000 ft-lb.



C3030139



C3030684



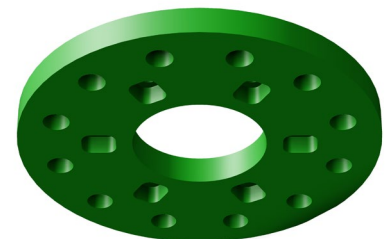
T3030247

BOLT CIRCLE ADAPTER

The T3030166N is for use between a tool having a 5-1/4" bolt circle and one having a 7-5/8" bolt circle. It is limited to 10,000 ft-lb.

Bolt Circle Adapter

CATALOG NO.	DESCRIPTION	WEIGHT (LB)
T3030166N	Bolt circle adapter with one 1/2" x 5-1/4" bolt circle and one 5/8" x 7-5/8" bolt circle	11



T3030166N



LIGHTING FOUNDATION PRODUCTS

CATALOG NUMBER	LENGTH	PIPE SIZE	BASEPLATE SIZE	BOLT CIRCLE	HARDWARE SIZE
4" DIAMETER FOUNDATIONS					
T1120338	56"	4" OD	.75" X 8.75" SQ	6" - 8.75"	.75" X 3.5"
T1120514	56"	4" OD	.75" X 13" SQ	6" - 14"	.75" X 3.5"
6" DIAMETER FOUNDATIONS					
T1122572	48"	6.625" OD	.75" X 12" SQ	8" - 14"	.75" X 3.5"
T1120936	48"	6.625" OD	1" X 12" SQ	8" - 14"	1" X 4"
T1120671	60"	6.625" OD	.75" X 12" SQ	8" - 14"	.75" X 3.5"
C11232JG4VL	60"	6.625" OD	1" X 12" SQ	9" - 14"	1" x 4"
T1120645	60"	6.625" OD	.75" X 17" OD	7" - 15"	.75" X 3.5"
T1120844	84"	6.625" OD	.75" X 12" SQ	8" - 14"	.75" X 3.5"
T1120262	84"	6.625" OD	1" X 12" SQ	9" - 14"	1" x 4"
8" DIAMETER FOUNDATIONS					
C11242NG4VP	60"	8.625" OD	1" X 15.75" SQ	11" - 17"	1" x 4"
C11242QG4VP	84"	8.625" OD	1" X 15.75" SQ	11" - 17"	1" x 4"
T1121010	120"	8.625" OD	1" X 15.75" SQ	11" - 17"	1" x 4"
10" DIAMETER FOUNDATIONS					
T1120590	84"	10.75" OD	1" X 15.75" SQ	13.5" - 17"	1" x 4"
T1120591	120"	10.75" OD	1" X 15.75" SQ	13.5" - 17"	1" x 4"

FOUNDATION HARDWARE

CATALOG NUMBER	SIZE (IN)	DESCRIPTION
T1120393	.75"	Package of 4 each: 3.5" Long Carriage Bolt, Round Washer, Hex Nut
T1122426	1.0"	Package of 4 each: 4" Long Carriage Bolt, Lock Washer, Hex Nut
T1120393US	.75"	MADE IN THE U.S.A. Package of 4 each: 3.5" Long Carriage Bolt, Round Washer, Hex Nut
T1122426US	1.0"	MADE IN THE U.S.A. Package of 4 each: 4" Long Carriage Bolt, Lock Washer, Hex Nut

EQUIPMENT PROTECTION PRODUCTS

CATALOG NUMBER	LENGTH	PIPE SIZE	BASEPLATE SIZE	BOLT CIRCLE	HARDWARE SIZE
BOLLARD FOUNDATIONS					
T1120620	36"	2.375" OD	.5" X 7" SQ	4" - 8"	.5" X 2.25"
BUMPER POSTS					
C1122990*	60"	3.5" OD	N/A	N/A	N/A
C1122989*	75"	3.5" OD	N/A	N/A	N/A
C1122973*	84"	3.5" OD	N/A	N/A	N/A
FOUNDATION WITH ANTI-THEFT CLAMP					
C11232JG4VLATKC	60"	6.625" OD	N/A	9" - 14"	N/A
C11242NG4VPATKC	60"	8.625" OD	N/A	11" - 17"	N/A
AREA LIGHTING FOUNDATIONS - FOR POURED IN PLACE CONCRETE BUMPER					
T1120564	96"	6.625" OD	1" X 12" SQ	8" - 14"	1" x 4"
T1120565	120"	6.625" OD	1" X 12" SQ	8" - 14"	1" x 4"
T1120567	96"	8.625" OD	1" X 12" SQ	9.5" - 14"	1" x 4"
T1120568	120"	8.625" OD	1" X 12" SQ	9.5" - 14"	1" x 4"
AREA LIGHTING - PRECAST COLLAR					
T1122666	Streetlight Foundation for 12" High Collar, 6.625 OD x 73" Long				
C1122611GRY	Precast Collar 12BP 24" Diameter x 12" Height, Gray				
T1122656	Streetlight Foundation for 24" High Collar, 6.625 OD x 85" Long				
C1122610GRY	Precast Collar 12BP 24" Diameter x 24" Height, Gray				

* Additional tools may not be required for Bumper Post if Kelly bar can be inserted into the 3.06" inside diameter of the post and pinned by a bent-arm pin. Tools are available which bolt directly to Chance Kelly bar adapters or which can be used with Chance locking dog assembly. Order C3030737 for Kelly bar attachment or C3030739 for use with locking dog assembly. Bumper Post is inserted into drive tool and held by the provided bent-arm pin.

Catalog Numbers provided are common and cover most applications, but other configurations are available. Please email civilconstruction@hubbell.com to get connected with your Hubbell Territory Manager.



www.chancefoundationsolutions.com

©2024 Hubbell Incorporated. All rights reserved.

Hubbell, the Hubbell logo and its affiliate logos are registered trademarks owned by Hubbell Incorporated. All third-party trademarks are property of their respective owners. Because Hubbell has a policy of continuous product improvement, we reserve the right to change design and specifications without notice.

Printed in the U.S.A. | CA04141E