



Product Datasheet

ANDERSON FARGO

SA22 -- Socket Eye



Socket Eye, Ductile Iron, Eye: 2.250" with 0.688" Hole, UTS 30,000 lb; For use with ANSI class 52-3 & 52-5 insulators.

Product Specifications

Hardware Family



Socket Eye &
Socket Clevis

Coupling Fittings

Socket Fittings



SA Series
Socket-Eye
Coupling Fittings

PDF Catalog Page

[Click HERE to view the web page.](#)

Ultimate Strength

30,000 lb (13,608 kg)

Coupling Length

2.063 in (52.40 mm)

Eye Width

2.250 in (57.15 mm)

Eye Hole Diameter	0.688 in (17.48 mm)
Dimension R	0.813 in (20.64 mm)
Dimension W	2.250 in (57.15 mm)
Material	Ductile Iron
Cotter Pin Material	Stainless Steel
Material Type	Non-Standard
UPC Code	09635932485
Standard Package	1
Standard Package Unit	Each
Min Order Qty	1
Weight / Ea.	1.862 lbs

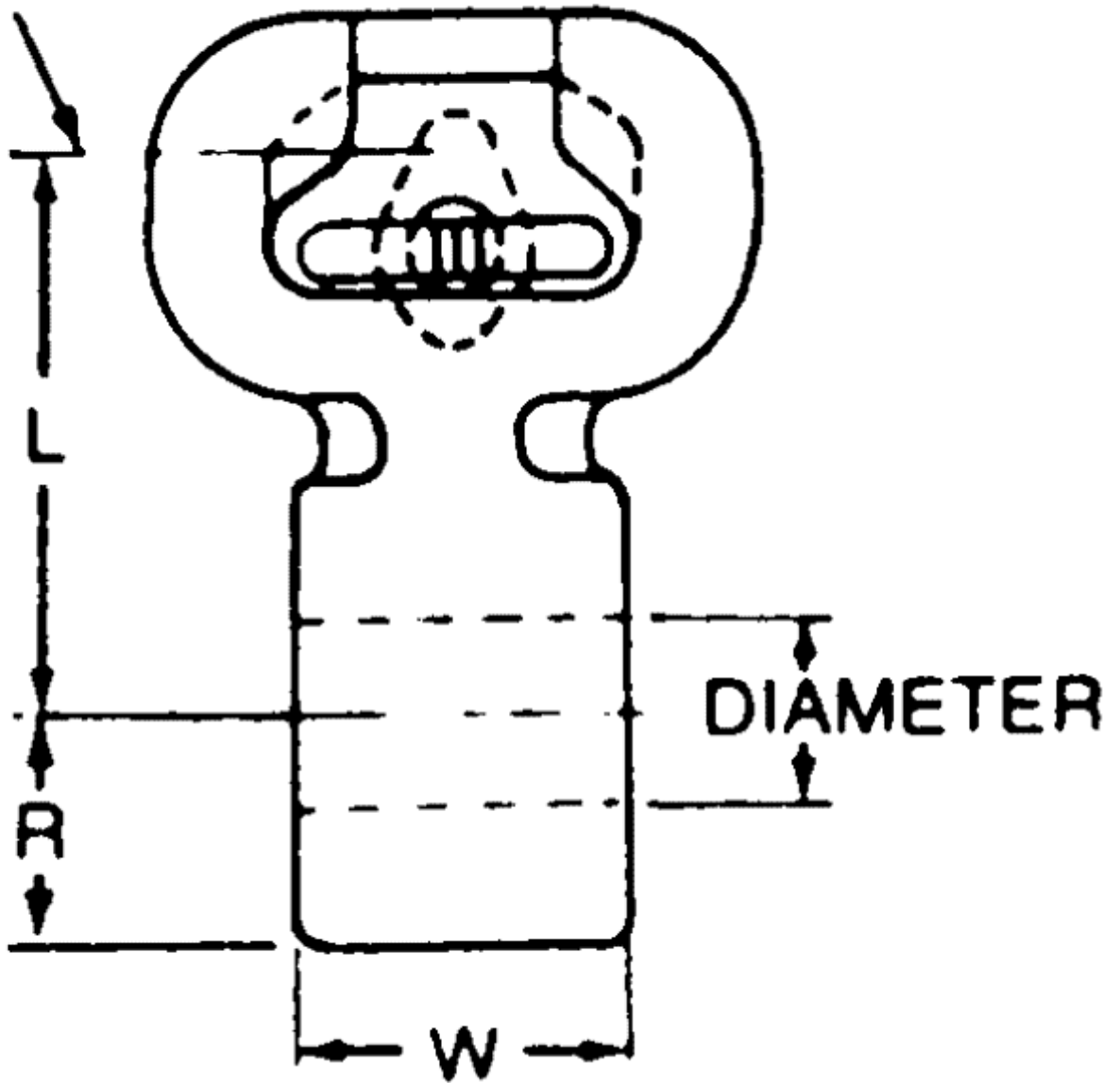
Notes

For use with ANSI class 52-3 & 52-5 insulators.

Compressed Product Number

SA22

Ø BALL



[Catalog Home](#)



[Warranty Info](#) | [Trademarks](#) | [Terms of Use](#)

All contents Copyright © 2007 Hubbell Power Systems, Inc. All rights reserved.

NOTE: Because Hubbell has a policy of continuous product improvement, we reserve the right to change design and specifications without notice.