

## Straight Blade Devices

### 20A, 250V, 2 Pole, 3 Wire Grounding

HBL® Extra Heavy Duty, Specification Grade, Duplex Receptacle

# HUBBELL

#### Features

- Triangle marking on face indicates isolated ground
- Slender/compact design
- Finder Groove Face
- Reduces installation time
- Fully insulated design

#### Ordering Information

Description	Device Color	UPC	Catalog Number
Isolated ground, back	Orange	783585880556	IG5462

#### Listings

UL Listed to UL498 File No. E2186  
Certified to CSA, C22.2, No. 42 File 285  
NEMA® WD-6 Compliant  
NEMA® WD-6 Compliant

#### Specifications

Face	Nylon
Base	PBT
Mounting Strap	.040" (1) Galvanized steel
Automatic Self-grounding Clip	Stainless steel
Ground Contact	.031" (.8) Brass
Clamp	Nickel plated steel
Ground Contact	.031 in. (.8) Brass
Terminal Screws	Brass
Mounting Screws	Stainless Steel

#### Performance

##### Electrical

Current Interrupting	Certified for current interrupting at full rated current
Dielectric Voltage	Withstands 2,000V minimum

##### Mechanical

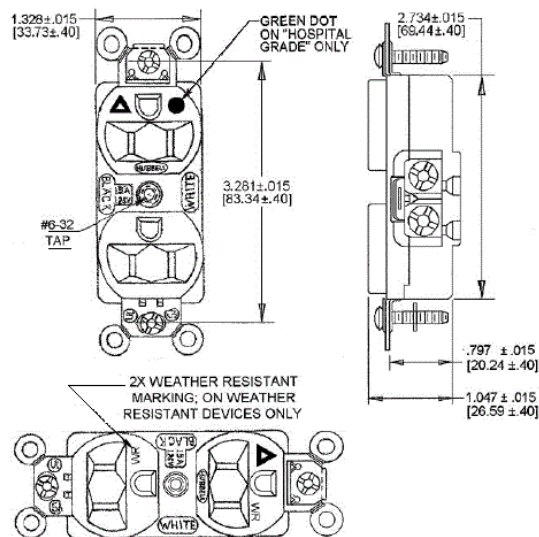
Product Identification	Ratings are a permanent part of the device
Terminal Accommodation	#14-#10 AWG copper stranded or solid conductor only
Terminal Identification	Terminals identified in accordance with UL 498 and CSA

##### Environmental

Flammability	UL 94 V-2 or better
Operating Temperatures	Maximum continuous 75°C; minimum -40°C (w/o impact)



20A 250V  
NEMA 6-20R  
UL CSA  
2 HP



#### Online Resources

Customer Use Drawing  
eCatalog  
Installation Instructions

#### Accessories

Wallplate or Weatherproof Cover

Duplex Open

Dimensions in Inches (mm)

Hubbell Wiring Device-Kellems • Hubbell Incorporated (Delaware) • 40 Waterview Drive • Shelton, CT 06484

Phone (800) 288-6000 • Fax (800) 255-1031 • Specifications subject to change without notice.

