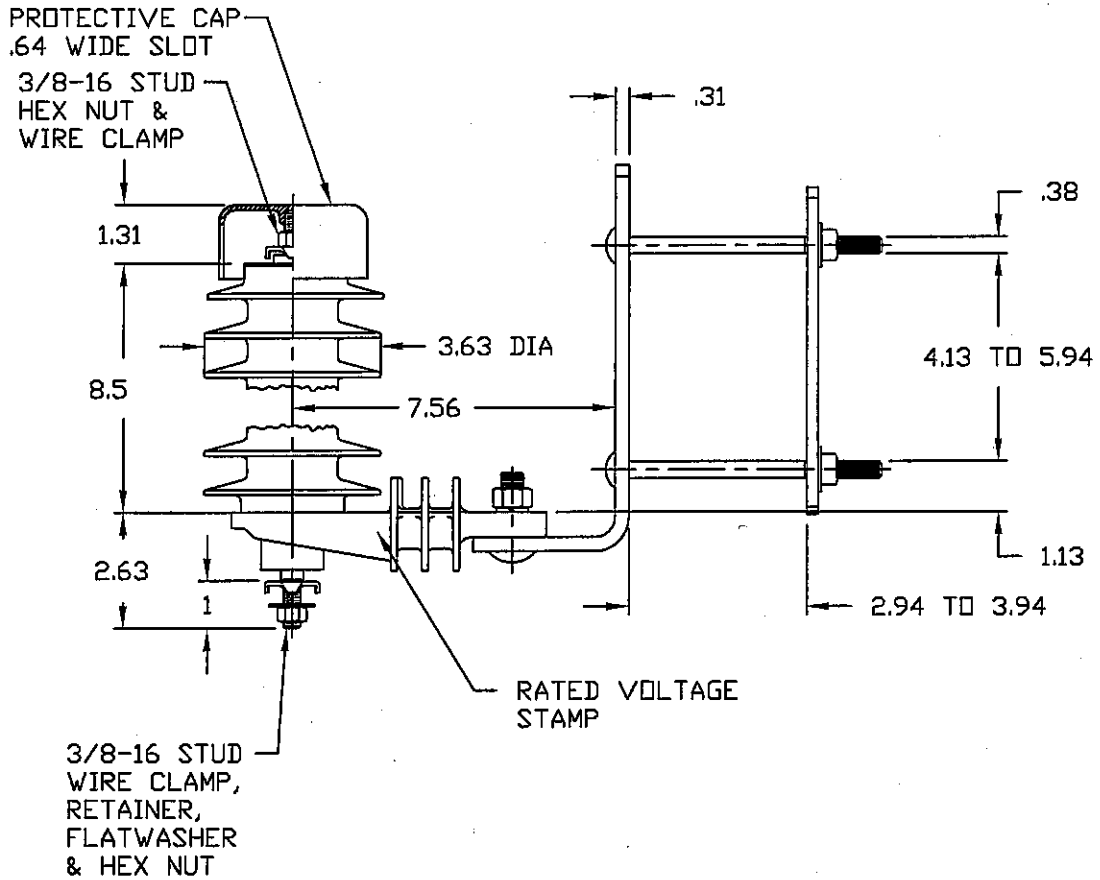


NOTES:

1. DIMENSIONS SUBJECT TO +/- 3% TOLERANCE
2. LEAKAGE DISTANCE (Inches) - 25.5
3. ALTITUDE 0-12000 FT. ABOVE SEA LEVEL
4. WEIGHT OF UNIT INCLUDING HARDWARE - 7.6 LB.
5. MAXIMUM CONTINUOUS LINE-TO-GROUND OPERATING VOLTAGE 15.3 kV MCOV
6. DUTY CYCLE VOLTAGE RATING 18 kV RMS.



.5μ SEC 5kA IR kV	500 A SWITCHING SURGE IR kV	MAXIMUM 8/20 DISCHARGE VOLTAGE - kV AT					
		1.5 kA	3.0 kA	5 kA	10 kA	20 kA	40 kA
62.8	46.4	50.1	53.8	57.0	63.3	72.6	88.4

DISTRIBUTION CLASS SURGE ARRESTER			
	CONFIDENTIAL: THIS DRAWING AND ITS CONTENTS ARE CONFIDENTIAL AND THE EXCLUSIVE PROPERTY OF HUBBELL POWER SYSTEMS. NO PUBLICATION, DISTRIBUTION OR COPIES MAY BE MADE WITHOUT THE WRITTEN CONSENT OF HUBBELL POWER SYSTEMS. HUBBELL POWER SYSTEMS UNPUBLISHED. ALL RIGHTS RESERVED UNDER THE COPYRIGHT LAWS.	TITLE <b>PDV-65 ARRESTER 15.3 KV MCOV</b>	
		SIZE <b>S</b>	DWG NO. <b>ALES7XXX</b>
REV <b>7</b>	DO NOT SCALE THIS DRAWING	DRN BY <b>ENG110</b>	DATE <b>06/17/00</b>
REV DATE <b>10/24/07</b>	SHEET 1 OF 1		SHEET 1 OF 1