

Straight Blade Devices
15A, 125V, 2 Pole, 3 Wire Grounding
HBL® Extra Heavy Duty Hospital Grade
Duplex Receptacle

Features

- Triangle marking on face indicates isolated ground
- Slender/compact design
- Impact-resistant finger groove face
- Triple wipe contacts

Ordering Information

Description	Device Color	UPC	Catalog Number
Isolated ground, back and side wired.	Red	783585879185	IG8200R

Listings

UL Listed to UL498 File No. E2186
Certified to CSA, C22.2, No. 42 File 285
Fed. Spec. WC596
NEMA® WD-6 Compliant

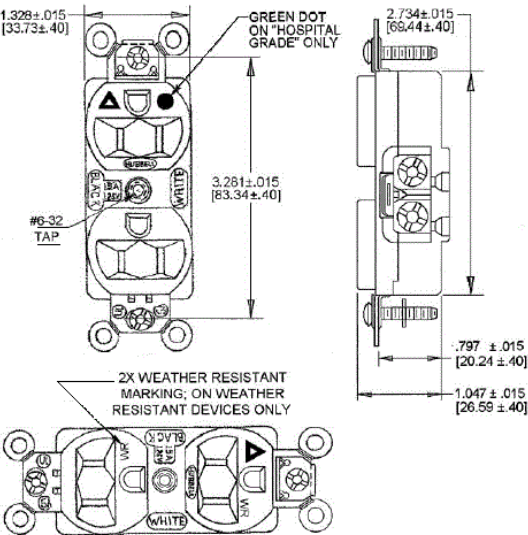
Specifications

Face	Nylon
Base	PBT
Contacts	0.031" (0.8) Brass
Clamp	Nickel plated steel
Terminal Screws	Brass
Mounting Strap	Brass
Automatic Self-grounding	Stainless steel
Clip	
Mounting Screws	Stainless Steel

Performance

Electrical	
Current Interrupting	Certified for current interrupting at full rated current
Dielectric Voltage	Withstands 2,000V minimum
Mechanical	
Product Identification	Ratings are a permanent part of the device
Terminal Accommodation	#14-#10 AWG copper stranded or solid conductor only
Terminal Identification	Terminals identified in accordance with UL 498 and CSA
Environmental	
Flammability	UL 94V-2
Operating Temperatures	Maximum continuous 75°C; minimum -40°C (w/o impact)

HUBBELL



Accessories

Wallplate or Weatherproof Cover Duplex Opening
--

Resources

Customer Use Drawing
eCatalog

