



**Product Datasheet**

**ANDERSON FARGO**

**SA10054 -- Socket Eye**



Socket Eye, Ductile Iron, Eye: 1.000" with 0.688" Hole, UTS 30,000 lb; For use with ANSI class 52-3 & 52-5 insulators.

**Product Specifications**

**Hardware Family**



Socket Eye &  
Socket Clevis

Coupling Fittings

**Socket Fittings**



SA Series

Socket-Eye  
Coupling Fittings

**PDF Catalog Page**

[Click HERE to view the web page.](#)

**Ultimate Strength**

30,000 lb ( 13,608 kg)

**Coupling Length**

5.500 in (139.7 mm)

**Eye Width**

1.000 in (25.40 mm)

<b>Eye Hole Diameter</b>	0.688 in (17.48 mm)
<b>Dimension R</b>	0.813 in (20.64 mm)
<b>Dimension W</b>	1.000 in (25.40 mm)
<b>Material</b>	Ductile Iron
<b>Cotter Pin Material</b>	Stainless Steel
<b>Material Type</b>	Non-Standard
<b>UPC Code</b>	09635932463
<b>Standard Package</b>	1
<b>Standard Package Unit</b>	Each
<b>Min Order Qty</b>	1
<b>Weight / Ea.</b>	1.47 lbs

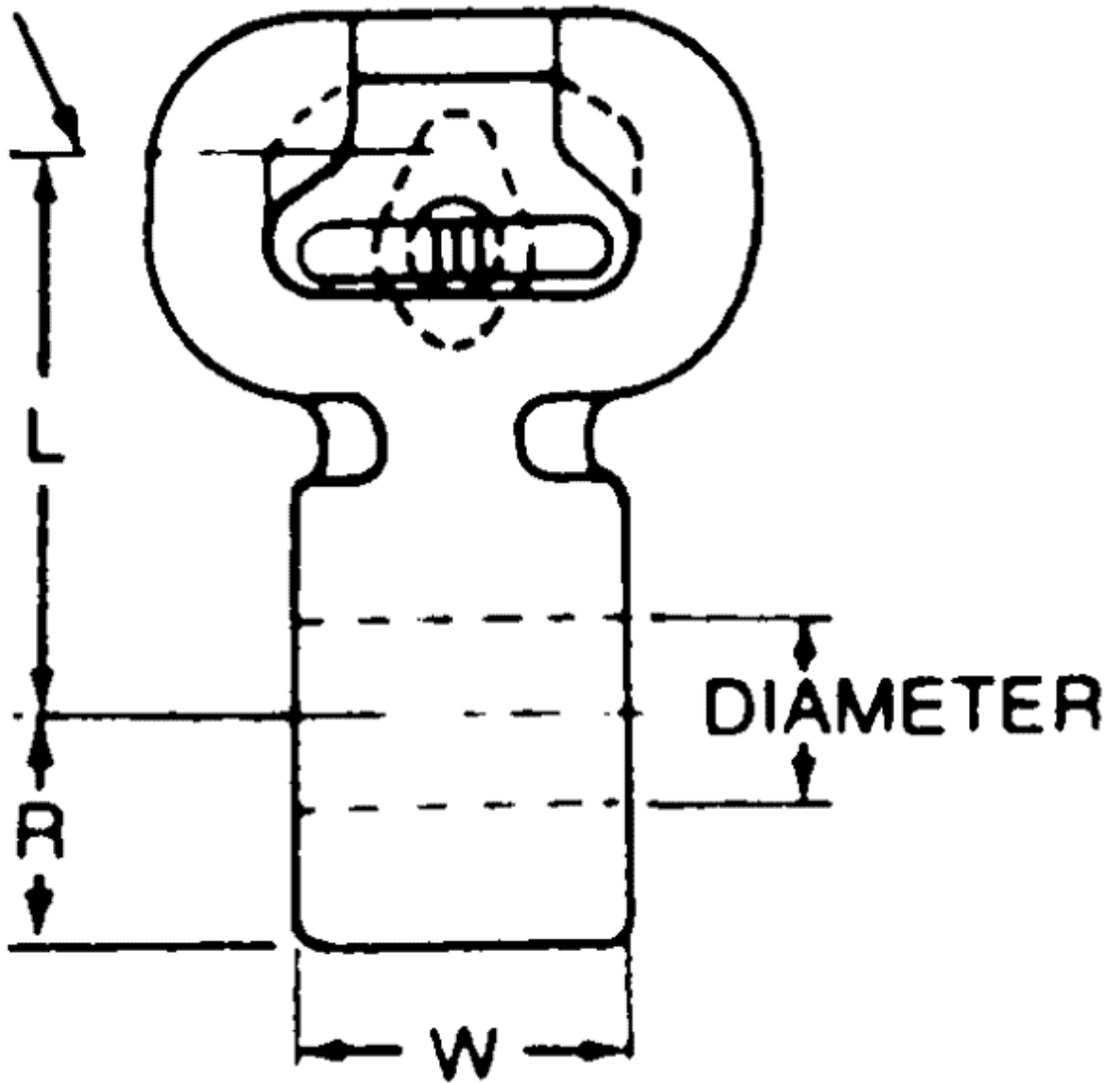
### Notes

For use with ANSI class 52-3 & 52-5 insulators.

### Compressed Product Number

SA10054

Ø BALL



[Catalog Home](#)



[Warranty Info](#) | [Trademarks](#) | [Terms of Use](#)

*All contents Copyright © 2007 Hubbell Power Systems, Inc. All rights reserved.*

NOTE: Because Hubbell has a policy of continuous product improvement, we reserve the right to change design and specifications without notice.