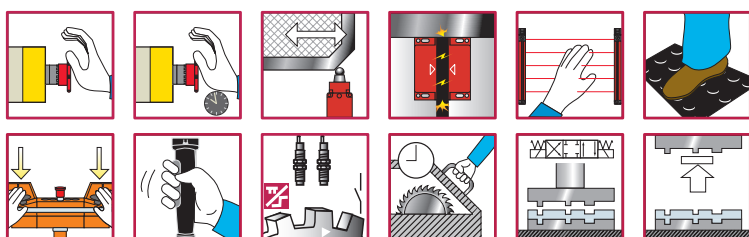


# Preventa safety configurable controllers XPSMC

Catalogue

January 2015



# How can you fit a 6000-page catalog in your pocket ?

Schneider Electric provides you with the complete set of industrial automation catalogs all on a handy USB key for PC or in an application for tablets



## Digi-Cat, a handy USB key for PC



- > Convenient to carry
- > Always up-to-date
- > Environmentally friendly
- > Easy-to-share format



Contact your local representative to get your own Digi-Cat



## e-Library, the app for tablets

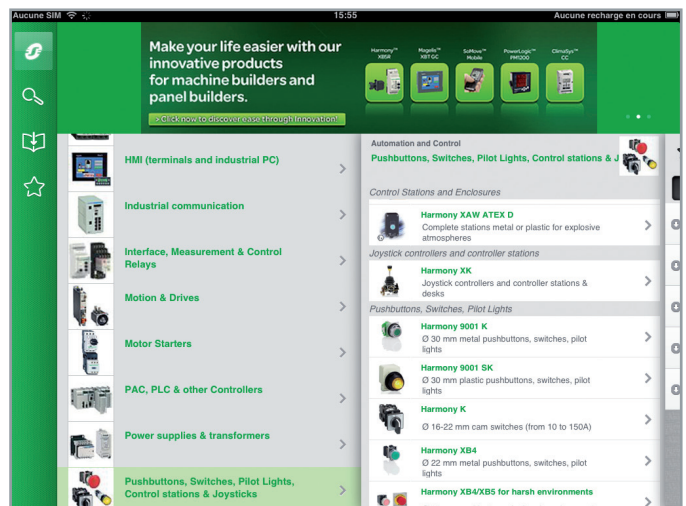
If you have an iPad®:

- > Go to the App Store and search for e-Library
- > or scan the QR code



If you have an Android tablet:

- > Go to the Google Play Store™ and search for eLibrary
- > or scan the QR code



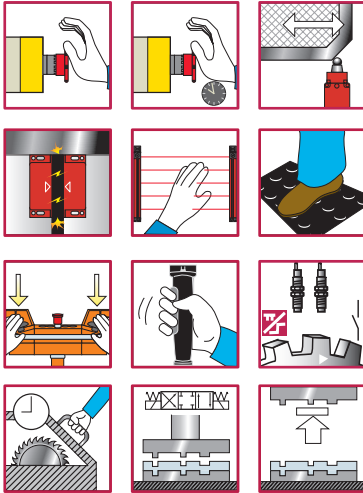
# General contents

## Preventa configurable safety controllers Type XPSMC

■ <b>Presentation</b>	
□ Line control .....	page 2
□ Configuration .....	page 2
□ Connections .....	page 2
□ Safety functions .....	page 2
□ Application schemes and functional diagrams .....	page 2
■ <b>Communication</b> .....	page 3
□ CANopen fieldbus .....	page 3
□ Profibus bus .....	page 3
□ Modbus serial link .....	page 3
■ <b>Description</b> .....	page 3
■ <b>References</b>	
□ Configurable safety controllers .....	page 4
□ Plug-in connectors .....	page 4
□ Configuration software .....	page 4
□ Starter acks .....	page 4
□ Connecting cables .....	page 5
■ <b>Product reference index</b> .....	page 6

# Preventa configurable safety controllers

## Type XPSMC



### Presentation

Configurable safety controllers **XPSMC●●Z●** are designed to provide a solution for safety applications requiring conformity to Performance Level PL e/Category 4 EN/ISO 13849-1 and SIL 3 EN/IEC 61508.

The range of configurable safety controllers comprises 6 products, each with different technical characteristics.

Configurable controllers	Safety inputs	Safety outputs (1)	Communication via		
			CANopen bus	Profibus bus	Modbus serial link
<b>XPSMC16Z</b>	16	6 + 2 x 2	–	–	Yes, slave
<b>XPSMC16ZC</b>	16	6 + 2 x 2	Yes, slave	–	Yes, slave
<b>XPSMC16ZP</b>	16	6 + 2 x 2	–	Yes, slave	Yes, slave
<b>XPSMC32Z</b>	32	6 + 2 x 2	–	–	Yes, slave
<b>XPSMC32ZC</b>	32	6 + 2 x 2	Yes, slave	–	Yes, slave
<b>XPSMC32ZP</b>	32	6 + 2 x 2	–	Yes, slave	Yes, slave

### Line control

The safety inputs are supplied by the various control outputs (2), in such a manner so as to monitor for short-circuits between the inputs, short-circuits between each input and earth or the presence of residual voltages.

The controller, assisted by the control outputs, continuously tests all the connected inputs. As soon as an error is detected on an input, all the outputs associated with this input are disconnected. Safety outputs associated with other inputs remain active.

### Configuration

Safety controllers **XPSMC●●Z●** are configurable and addressable using software **XPSMCWIN** running on a PC. Connection accessories required: see page 5.

### Connections

For connection of safety inputs and outputs, safety controllers **XPSMC●●Z●** can be fitted with a choice of:

- screw connectors type **XPSMCTS●●**, or
- spring clip connectors type **XPSMCTC●●**.

These connectors are to be ordered separately, see page 5.

### Safety functions

Configuration of the safety functions is carried out using software **XPSMCWIN** which is available on the Safety Suite V2 CD-ROM.

**30 certified safety functions** are available with this software and they are easily assignable to the safety outputs. The safety functions have multiple combination possibilities and various starting conditions.

The safety functions are:

- certified in accordance with EN/ISO 13849-1 and IEC 61508,
- configurable in controller XPSMC using software **XPSMCWIN** which is available on the Safety Suite V2 software pack.

All 8 safety outputs are suitable for use in safety related parts of control systems conforming to Performance Level PL e/Category 4 in accordance to EN/ISO 13849-1.

### Main safety functions

- Emergency stop monitoring, with or without time delay, 1 or 2-channel wiring
- Two-hand control (type III-A and C conforming to EN 574/ISO 13851)
- Guard monitoring with 1 or 2 limit switches
- Guard monitoring for injection presses and blowing machines
- Magnetic switch monitoring
- Sensing mat monitoring
- Light curtain (type 4 conforming to EN/IEC 61496, relay or solid-state output) monitoring
- Zero speed detection
- Dynamic monitoring of hydraulic valves on linear presses
- Monitoring safety stop at top dead centre on eccentric press
- Safety time delays
- "Muting" function of light curtains
- Enabling switch monitoring, 2 or 3 contact
- Hydraulic press
- Eccentric press
- Foot switch monitoring
- Chain shaft breakage monitoring
- Position selector

### Application schemes and functional diagrams

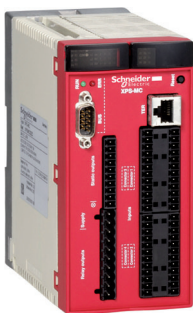
See instruction sheet on [www.schneider-electric.com](http://www.schneider-electric.com)

(1) 8 independent safety outputs = 6 solid-state safety outputs + 2 x 2 relay outputs (4 relay outputs with mechanically linked contacts).

(2) 8 control outputs are available but they are not safety outputs.

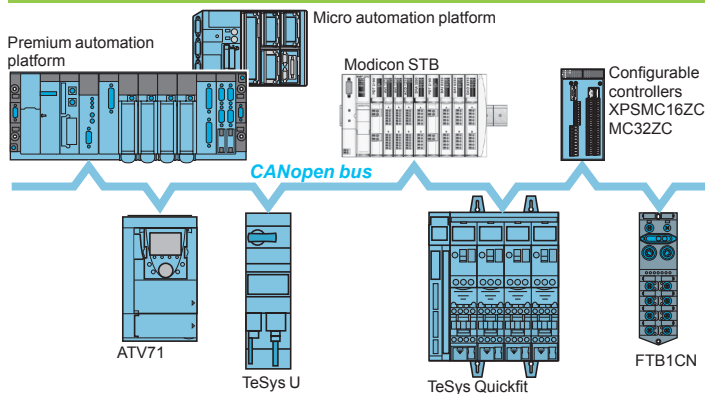


XPSMC16ZC



XPSMC32ZC

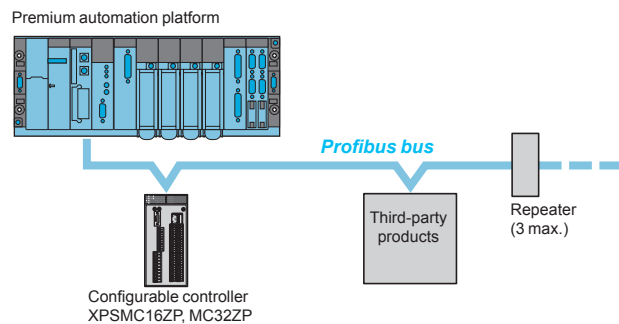
### Communication



#### CANopen fieldbus

Configurable safety controllers **XPSMC●●ZC** incorporate a SUB-D 9-pin male connector for direct connection on CANopen bus.

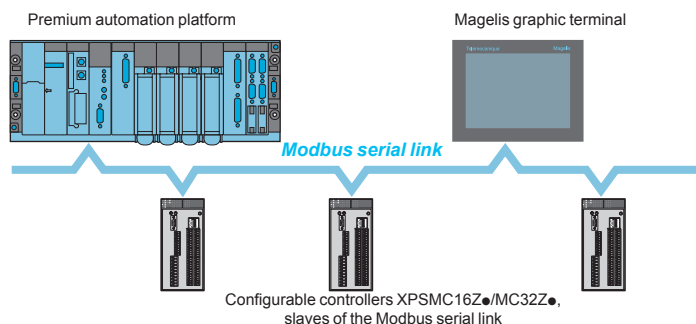
CANopen bus is an open bus that ensures deterministic and reliable access to the real-time data of automation equipment. The bus uses a shielded dual twisted pair on which a maximum of 127 devices can be connected by chaining. The baud rate varies between 10 Kbps and 1Mbps depending on the length of the bus (5000 m/16404.15 ft to 20 m/65.62 ft).



#### Profibus bus

Configurable safety controllers **XPSMC●●ZP** incorporate a SUB-D 9-pin male connector for connection on Profibus bus. Configurable safety controllers **XPSMC●●ZP** are slaves on the Profibus bus.

Profibus bus is a fieldbus that meets industrial communication requirements. The topology of the Profibus bus is of the linear type with a centralised master/slave type access procedure. The physical link is a single shielded twisted pair.



#### Modbus serial link

Configurable safety controllers **XPSMC●●Z●** incorporate a Modbus communication interface (RJ45 connector) for configuration and diagnostics.

This interface enables connection of the controllers to:

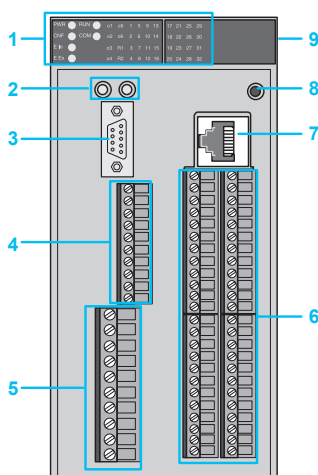
- a PC (configuration),
- a PLC (diagnostics), or
- an operator dialogue terminal (diagnostics).

The Modbus serial link comprises a master station (Premium automation platform) and slave stations (configurable controllers **XPSMC16/32Z●**).

Two exchange mechanisms are possible:

- **Question/response:** the questions from the master are addressed to a given slave. The response is expected by return from the interrogated slave.
- **Distribution:** the master distributes a message to all the stations of the Modbus serial link. The latter execute the order without transmitting a reply.

### Description



#### Configurable safety controller XPSMC●●Z●, with screw connectors

##### Front face

- 1 LED display and system diagnostics.
- 2 Two LEDs for CANopen or Profibus (1) connection status.
- 3 SUB-D 9-pin male connector for connection on CANopen bus (**XPSMC16ZC/MC32ZC**) or SUB-D 9-pin female connector for connection on Profibus bus (**XPSMC16ZP/MC32ZP**).
- 4 Solid-state safety output and "muting" indicator light terminals.
- 5 Power supply (24 V  $\overline{\text{---}}$ ) and relay safety output terminals.
- 6 Control output terminals for power supply to safety inputs and safety input terminals.
- 7 RJ45 connector for connection on Modbus serial link.
- 8 RESET button (resetting of controller).

##### Rear face:

- 9 Fixing plate for mounting on rail.

(1) Depending on controller model.



# Preventa configurable safety controllers

## Type XPSMC



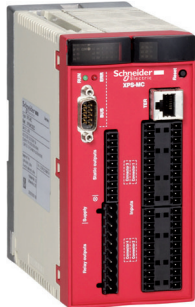
XPSMC16Z



XPSMC32Z



XPSMC16ZC



XPSMC32ZC



XPSMC16ZP



XPSMC32ZP

### References

#### Configurable safety controllers (connector not included)

Number of inputs	Number of outputs		Communication (Link and bus)	Reference	Weight kg/lb
	Relay	Solid-state			
16	4 (2 x 2)	6	Modbus	XPSMC16Z	0.820/ 1.808
			Modbus, CANopen	XPSMC16ZC	0.820/ 1.808
			Modbus, Profibus	XPSMC16ZP	0.820/ 1.808
32	4 (2 x 2)	6	Modbus	XPSMC32Z	0.840/ 1.852
			Modbus, CANopen	XPSMC32ZC	0.840/ 1.852
			Modbus, Profibus	XPSMC32ZP	0.840/ 1.852

#### Plug-in connectors for configurable safety controllers (1)

Description	For use with	Reference	Weight kg/lb
Screw connectors	XPSMC16Z, MC16ZC, MC16ZP	XPSMCTS16	0.080/ 0.176
	XPSMC32Z, MC32ZC, MC32ZP	XPSMCTS32	0.110/ 0.243
Spring clip connectors	XPSMC16Z, MC16ZC, MC16ZP	XPSMCTC16	0.080/ 0.176
	XPSMC32Z, MC32ZC, MC32ZP	XPSMCTC32	0.110/ 0.243

#### Configuration software

■ Reference XPSMCWIN is the full version of configuration software XPSMCWIN version 2.4 and must be installed if no previous version of this software has been installed.

Description	Operating system	Languages	Reference	Weight kg/lb
Configuration software for controllers XPSMC●●Z● CD-ROM + user manual	Windows 2000, Windows XP	FR, EN, DE, IT, ES, PT	XPSMCWIN	0.520/ 1.146
XPSMCWIN software update CD-ROM + user manual	Windows 2000, Windows XP	Software update available on <a href="http://www.schneider-electric.com">www.schneider-electric.com</a>		

#### Starter packs

The Starter packs contain the necessary components to start using the safety controller containing:

- Safety controller (pack reference designates type of safety controller)
- XPSMCWIN configuration software
- Configurations cable
- Connectors

Description	Controller included in the pack	Reference	Weight kg/lb
Starter packs	XPSMC16Z	XPSMC16ZPACK	–
	XPSMC16ZC	XPSMC16ZCPACK	–
	XPSMC16ZP	XPSMC16ZPPACK	–
	XPSMC32Z	XPSMC32ZPACK	–
	XPSMC32ZC	XPSMC32ZCPACK	–
	XPSMC32ZP	XPSMC32ZPPACK	–

(1) To be ordered separately to the controllers.

# Preventa configurable safety controllers

## Type XPSMC



XPSMCCPC



TSXPCX1031

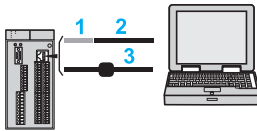


TSXCANTDM4

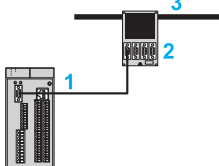
### References

#### Connecting cables (1)

Function	Length m/ft	Reference	Weight kg/ lb
Diagnostics using Magelis operator dialogue terminal type XBT GT	3/ 9.84	VW3A8306R30	1.130/ 2.491
Configuration software	1 Adaptor: RJ45 socket/PC connection cables	XPSMCCPC	0.011/ 0.024
	2 Cable to PC serial port (type SUB-D9)	TSXPCX1031	0.170/ 0.375
	3 USB / RJ45 cable: used to connect the controller to a PC Equipped with a USB connector (PC end) and an RJ45 connector (controller end)	TCSMCNAM3M002P	–



Function	Medium	Length m/ft	Reference	Weight kg/ lb
Modbus serial link access	Premium automation platform TSX SCY 21601	–	XPSMCCSY	–
CANopen bus access	1 CANopen connection cables (fitted with: 1 SUB-D 9-pin female connector at each end)	0.3/ 0.98	TSXCANCADD03	–
		1/ 3.28	TSXCANCADD1	–
		3/ 9.84	TSXCANCADD3	–
		5/ 16.40	TSXCANCADD5	–
		–	TSXCANTDM4	–
	2 CANopen tap-off box	–	TSXCANTDM4	–
	3 Standard CANopen cables	50/ 164.04	TSXCANCA50	–
	100/ 328.08	TSXCANCA100	–	
	300/ 984.24	TSXCANCA300	–	
Profibus bus access		100/ 328.08	TSXPBSCA100	–
		400/ 1312.33	TSXPBSCA400	–



(1) To be ordered separately to the controllers.

# Preventa configurable safety controllers

Type XPSMC

Product reference index

---

T	
TSCMCNAM3M002P	5
TSXCANTDM4	5
TSXCANCA50	5
TSXCANCA100	5
TSXCANCA300	5
TSXCANCADD1	5
TSXCANCADD03	5
TSXCANCADD3	5
TSXCANCADD5	5
TSXPBSCA100	5
TSXPBSCA400	5
TSXPCX1031	5
VW3A8306R30	5
XPSMC16Z	4
XPSMC16ZC	4
XPSMC16ZCPACK	4
XPSMC16ZP	4
XPSMC16ZPACK	4
XPSMC16ZPPACK	4
XPSMC32Z	4
XPSMC32ZC	4
XPSMC32ZCPACK	4
XPSMC32ZP	4
XPSMC32ZPACK	4
XPSMC32ZPPACK	4
XPSMCCPC	5
XPSMCSCY	5
XPSMCTC16	4
XPSMCTC32	4
XPSMCTS16	4
XPSMCTS32	4
XPSMCWIN	4





**More information on**  
<http://www.schneider-electric.com/machinesafety>

#### **Schneider Electric Industries SAS**

Head Office  
35, rue Joseph Monier  
F-92500 Rueil-Malmaison  
France

The information provided in this documentation contains general descriptions and/or technical characteristics of the performance of the products contained herein. This documentation is not intended as a substitute for and is not to be used for determining suitability or reliability of these products for specific user applications. It is the duty of any such user or integrator to perform the appropriate and complete risk analysis, evaluation and testing of the products with respect to the relevant specific application or use thereof. Neither Schneider Electric nor any of its affiliates or subsidiaries shall be responsible or liable for misuse of the information contained herein.

Design: Schneider Electric  
Photos: Schneider Electric