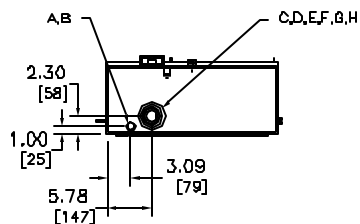
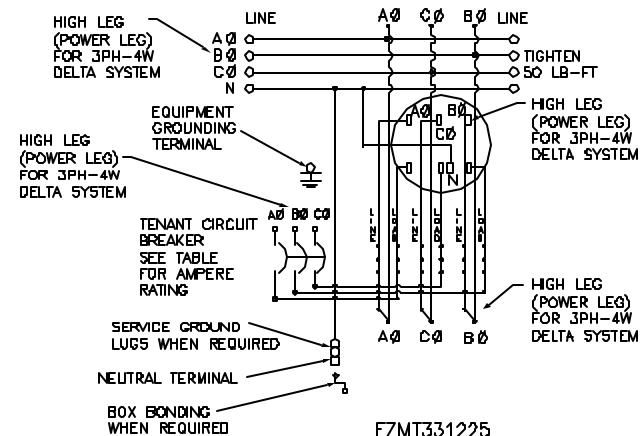
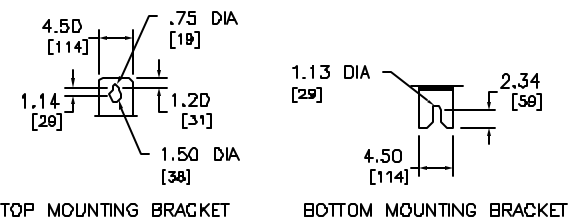


FOR METERING EQUIPMENT SHORT CIRCUIT CURRENT RATINGS REFER TO SQUARE D DIGEST 173, PAGE 2-8.



TENANT CIRCUIT DISCONNECTS (ORDER ONE PER SOCKET POSITION)			
TENANT CIRCUIT BREAKER (3-POLE)	AMPERE RATINGS MIN. - MAX.	SHORT CIRCUIT BREAKER RATING RMS SYMMETRICAL AMPERES MAX.	VOLTS MAX.
QBP-TM	70 - 225	10,000	240/120
QDP-TM	70 - 225	25,000	
QGP-TM	70 - 225	65,000	
QWP-TM	70 - 225	100,000 ▼	

▼ RATED 100KA MAX. AT 208Y/120 VAC, 65 KA MAX. AT 240/120 VAC



TOP MOUNTING BRACKET BOTTOM MOUNTING BRACKET

DUAL DIMENSIONS: INCHES [MILLIMETERS]

KNOCKOUT SCHEDULE SYMBOL	CONDUIT SIZE
A	.50
B	.75
C	1.00
D	1.25
E	1.50
F	2.00
G	2.50
H	3.00

NOTES:

FINISH: GRAY BAKED ENAMEL POWDER COAT PAINT OVER CLEANED GALVANNEALED STEEL.
 UL LISTED - FILE E-131840, VOL M
 SUITABLE FOR USE AS SERVICE EQUIPMENT.
 MAIN HORIZONTAL CROSS BUS RATED 1200A.
 100,000 RMS SYMMETRICAL AMPERES MAXIMUM
 METER CENTER SHORT CIRCUIT CURRENT RATING.
 UNMETERED COMPARTMENTS ARE SEALABLE BY UTILITY.
 GANGABLE MULTI-METERING EQUIPMENT IS DESIGNED FOR WALL MOUNTING ONLY (NOT SUITABLE FOR USE AS FLOOR STANDING EQUIPMENT).

SYSTEM TYPE (N)	SERVICE PROVIDED (OUT)	MAIN BUS RATING	CATALOG NUMBER	METER SOCKET TYPE	NUMBER OF POSITIONS
3PH-4W 240/120 VAC DELTA OR 208Y/120 VAC	3PH-4W 240/120 VAC DELTA OR 208Y/120 VAC	1200 A	EZMT331225	7-JAW PLUG-IN WITH TEST BLOCK BYPASS SUPPLIED WITH RING STYLE TRIM	1
TENANT CIRCUIT BREAKER (ORDER SEPARATELY)	POLES	AMPERE RATING	NEUTRAL WIRE RANGE	SERVICE GROUND WIRE RANGE	EQUIPMENT GROUNDING WIRE RANGE
3-POLE SEE TABLE ABOVE	3	225	#4-300 KCMIL CU/AL	#4-300 KCMIL CU/AL	#14-2/0 AWG CU #12-2/D AWG AL

ONE POSITION EZ METER-PAK METERING EQUIPMENT
 BRANCH UNIT INCLUDES METER SOCKET WITH
 TEST BLOCK BYPASS, AND PROVISIONS FOR
 MOUNTING 225A MAX. TENANT CIRCUIT BREAKER
 NEMA TYPE JR ENCLOSURE



DWG# 3278
 NO.