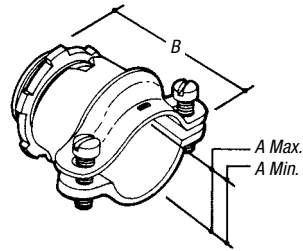


Non-Metallic Sheathed Cable Fittings

NM Clamp-Type Connector — Die-Cast Zinc

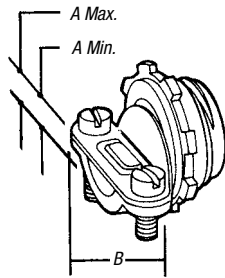


CAT. NO.	CONDUIT SIZE (IN.)	DIMENSIONS (IN.)			STD. CTN.
		A (MIN.)	A (MAX.)	B	
NC-201	½	.40	.95	1.87	250
NC-202	¾	.50	1.10	1.84	200
NC-203	1	.62	1.14	2.00	100
NC-204	1¼	.50	1.38	2.28	100
NC-205	1½	.75	1.61	2.49	50
NC-206	2	.90	2.04	3.35	50

CSA File No. LR-12798.

UL File No. E-17583.

Clamp-Type Connector — Die-Cast Zinc

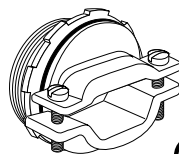


CAT. NO.	CONDUIT SIZE (IN.)	DIMENSIONS (IN.)			STD. CTN.
		A (MIN.)	A (MAX.)	B	
NC301	¾ (½ KO)	.18	.64	1.16	1,000
NC-302	¾	.41	.82	1.87	500
NC-303	1	.34	.94	2.01	250

CSA File No. LR-12798.

UL File No. E-17583.

Clamp-Type Connectors Non-Watertight — Die-Cast Zinc

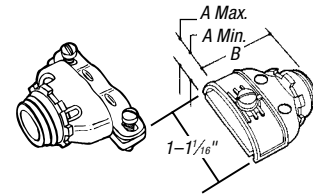


CAT. NO.	CONDUIT SIZE (IN.)	DIMENSIONS (IN.)			STD. CTN.
		A (MIN.)	A (MAX.)	B	
NC041	1¼	.27	.75	2.02	100
NC-051	1½	.54	.95	2.50	50
NC-061	2	.75	1.12	3.41	40

UL File No. E-15170 — 1¼"–1½"

UL File No. E-17583 — 2"

Duplex Clamp-Type Connector — Die-Cast Zinc



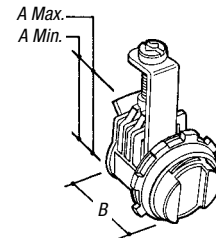
- For use with aluminum, smooth, extruded metal-clad cable. (min. dia. .410" — max. dia. .500").



CAT. NO.	CONDUIT SIZE (IN.)	DIMENSIONS (IN.)			STD. CTN.
		A (MIN.)	A (MAX.)	B	
XC-210	¾ (½ KO)	.13	.65	1.56	250
XC-211-SC	¾	.24	.63	1.59	200
XC-222-SC	¾	.24	.63	1.59	200

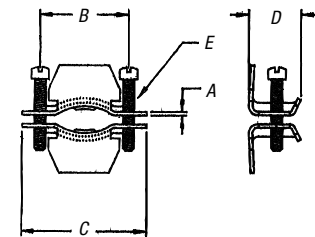
CONDUIT/CABLE	FMC (IN.)	AC	MCC	MCI
Max. Size	¾	10/2	.565	.565
Min. Size	¾	14/2	.425	.425

NM Flex Connectors Saddle-Type — Die-Cast Zinc



CAT. NO.	SIZE (IN.)	DIMENSIONS (IN.)			STD. CTN.
		A (MIN.)	A (MAX.)	B	
XC-2200-C	¾	.12	.63	.98	500

Tilt-In Connector — Electro-Galvanized Metallic Steel



CAT. NO.	SIZE (IN.)	DIMENSIONS (IN.)					STD. CTN.
		A	B	C	D	E	
NC-850	¾	.050	.950	1.312	.650	8–32 x ¼	1,000
NC-851	¾–1	.050	1.250	1.750	.760	8–32 x 1	500
NC-852	1–¼	.062	1.625	2.125	.760	10–32 x 1	250
NC-853	1–½	.062	1.970	2.500	.785	10–32 x 1 1/2	100