

INSTRUCTIONS FOR THRU-BOLT SINGLE POSITION EQUIPMENT MOUNT

Catalog Number CTB2M1-6, CTB2M1-9, CTB5M1-6, CTB5M1-9

Keep these instructions for future reference.



WARNING

Failure to read and follow all of the information presented here and with the associated equipment could cause damage to equipment, serious injury, or death.

APPLICATION

Installation Instructions on back →

Model CTB2M1-6

For mounting one 3 KVA through 50 KVA transformer recloser or sectionalizer, having 12 inch EEI-NEMA Type A lugs (adapter plate not required). Ground wire clamp and $\frac{5}{8}$ " galvanized mounting hardware furnished with mount. Attaches to pole with two $\frac{5}{8}$ " through bolts (not supplied). Mounts equipment 6" from pole. Load capacity 2000 pounds.

Model CTB2M1-9

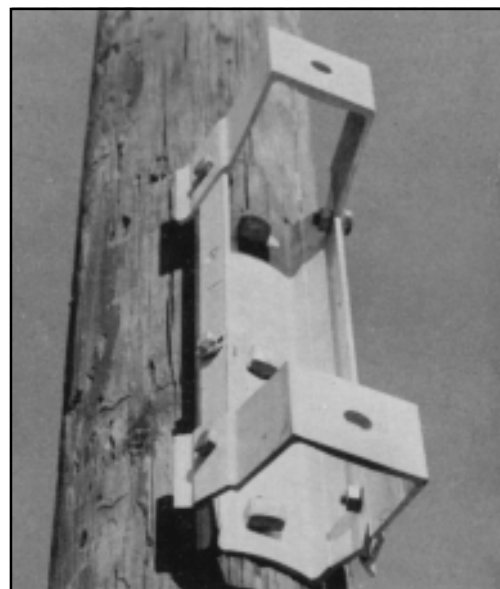
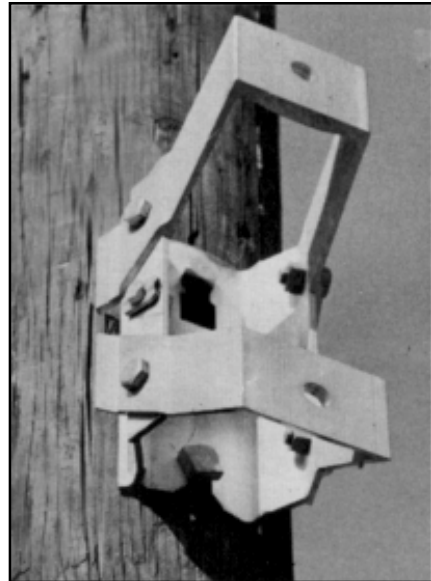
Same as model CTB2M1-6 above except mounts equipment 9" from pole.

Model CTB5M1-6

For mounting one 3 KVA through 100 KVA transformer having 12" or 24" EEI-NEMA type A or B lugs. If type C adapter plates are used, a 167 KVA or larger transformer can be mounted. Ground wire clamp and $\frac{3}{4}$ " galvanized mounting hardware furnished with mount. Attaches to pole with two or three $\frac{3}{4}$ " through bolts (not supplied). Mounts equipment 6" from pole. Load capacity 2000 pounds with two through bolts. Load capacity 5000 pounds with three through bolts.

Model CTB5M1-9

Same as model CTB5M1-6 above except mounts equipment 9" from pole.



POWER SYSTEMS, INC.

P216-0242

INSTALLATION

WARNING

Improper installation can allow transformer to fall.
Can cause property damage, personal injury or death.
Mounting bracket must be securely bolted in interlocking engagement with body (see Figure 1).

1. Remove preassembled thru-bolt mount from carton and check to see if all parts are present. CTB2M1-6 and -9 are shipped assembled to accept 12" equipment lug spacing. CTB5M1-6 and -9 are shipped assembled to accept 24" equipment lug spacing.
2. If necessary, lug spacing on CTB5M1-6 and -9 can be changed from 24" to 12" spacing by reversing direction of mounting brackets. Be sure mounting brackets are securely bolted in interlocking engagement with body (see Figure 1).
3. Drill two holes for through bolt in pole 7" apart for CTB2M1-6 and -9. Drill two holes 17" apart (for 2 bolt mounting) or three holes 8³/₄" apart (for 3 bolt mounting) for CTB5M1-6 and -9.
4. Install equipment mount with proper length and diameter through bolts. Use two ⁵/₈" diameter bolts for CTB2M1-6 and -9. For the CTB5M1-6 and -9 mounts, use two ³/₄" bolts for loads less

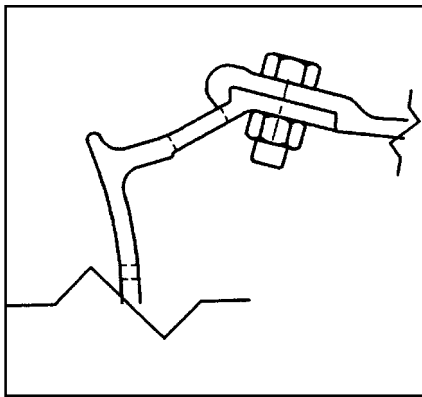


Figure 1

than 2000 pounds and three ³/₄" bolts for loads greater than 2000 pounds. Be sure bolt head is in key portion of key slot of mount body. Use a washer on nut end of through bolt on back side of pole. Tighten bolts securely being sure to have at least one thread showing on outside of nut.

WARNING

Improper installation can allow transformer to fall.
Can cause property damage, personal injury or death.
Install through bolt such that at least one thread of bolt shows on outside of nut.
Be sure bolt head is located in slot part of key slots in mount body.
Tighten through bolt securely to prevent mount slippage.

5. Transformers or other equipment can now be installed using bolts, washers and nuts provided (see Figure 2). Install ground wire between the two stainless steel wire clamps provided.

WARNING

Possible electrical shock.
Can cause personal injury or death.
Install ground wire between wire clamps provided to avoid creating copper-aluminum corrosion cell that can degrade electrical connection.

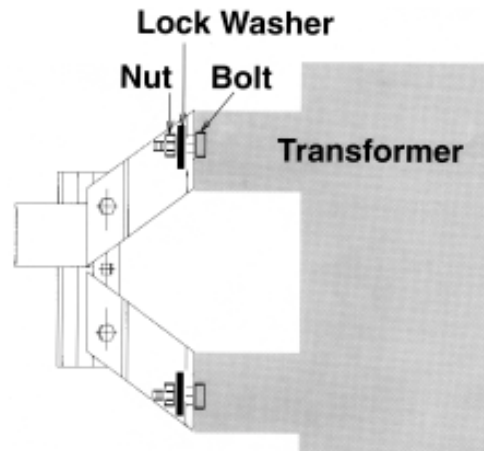


Figure 2

These instructions do not claim to cover all details or variations in equipment, nor to provide for all possible conditions to be met concerning installation, operation, or maintenance of this equipment. If further information is desired or if particular problems are encountered which are not sufficiently covered in this guide, contact Hubbell Power Systems.



POWER SYSTEMS, INC.

NOTE:

Because Hubbell has a policy of continuous product improvement, it reserves the right to change design and specifications without notice.

©2000 Hubbell Power Systems, 210 N. Allen St., Centralia, MO 65240 USA
Printed in USA

P216-0242