

## FEATURES & SPECIFICATIONS

**INTENDED USE** — Static T8 fixtures provide general illumination for recessed applications; idea for restricted plenum spaces.

**ATTRIBUTES** — Designed exclusively for use with T8 lamps, electronic ballasts and sockets.

**CONSTRUCTION** — Smooth hemmed sides and smooth, inward formed end flanges for safe handling. Lighter weight fixture allows for safe, easy installation.

Standard steel door frame has superior structural integrity with premium extruded appearance and precision flush mitered corners. Powder painted, steel latches provide easy, secure door closure.

Superior mechanical light seal requires no foam gasketing. Integral T-bar clips secure fixture to T-bar system. Housing formed from cold-rolled steel. Acrylic shielding material 100% UV stabilized. No asbestos is used in this product.

**FINISH** — Five-stage iron-phosphate pretreatment ensures superior paint adhesion and rust resistance. Painted parts finished with high-gloss, baked white enamel.

**OPTICAL** — Broad range of lens options available.

**ELECTRICAL** — Standard ballast is electronic, thermally protected, resetting, Class P, HPF, non-PCB, UL Listed, CSA certified ballast, universal voltage and sound rated A.

Luminaire is suitable for damp locations. AWM, TFN or THHN wire used throughout, rated for required temperatures.

**LISTING** — Standard: UL. Optional: Canada — CSA or cUL; Mexico — NOM.

**WARRANTY** — 1-year limited warranty. Complete warranty terms located at [www.acuitybrands.com/CustomerResources/Terms\\_and\\_conditions.aspx](http://www.acuitybrands.com/CustomerResources/Terms_and_conditions.aspx)

US patents: 6,210,025; 6,231,213; 2,288,471.

**Note:** Actual performance may differ as a result of end-user environment and application.

Specifications subject to change without notice.

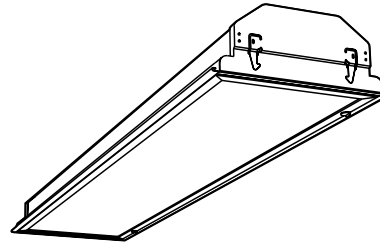
Catalog Number
Notes
Type

Static Troffer



# GT8 1'x4'

1, 2 or 3 Lamps



### Specifications

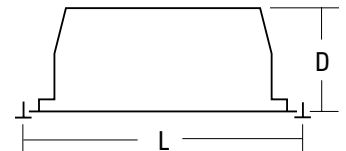
Length: 48 (121.8)

Width: 12 (30.5)

Depth: 4-1/2 (11.4)

Weight: 17 lbs (7.7 kg)

All dimensions are inches (centimeters).



### ORDERING INFORMATION For shortest lead times, configure products using **bolded options**.

**Example:** GT8 2 32 A12 MVOLT GEB10IS

GT8							
Series	Trim type	Number of lamps	Lamp type	Door frame	Diffuser type	Voltage	Options
<b>GT8</b> 1' wide	<b>(blank)</b> Grid F Overlapping flanged	<b>1</b>	<b>32</b> 32W T8 (48")	<b>(blank)</b> Flush steel, white	<b>A12</b> #12 pattern acrylic	120	<b>1/3</b> One 3-lamp ballast
		<b>2</b>		FN Flush aluminum, natural	<b>A12125</b> #12 pattern acrylic, .125" thick	277	<b>GEB10IS</b> Electronic ballast, <10% THD, instant start
		<b>3</b> Not included		FM Flush aluminum, matte black	A19 #19 pattern acrylic, .156" thick	347	<b>GEB10RS</b> Electronic ballast, <10% THD, rapid start
				<b>FW</b> Flush aluminum, white	A15 #15 pattern acrylic, .2" thick	MVOLT <sup>2</sup> Others available	<b>EL</b> Emergency battery pack (nominal 500 lumens)
				RN Regressed aluminum, natural	PC15 1/2" x 1/2" x 1/2" plastic cube louver, silver		<b>EL14</b> Emergency battery pack (nominal 1400 lumens)
				<b>RW</b> Regressed aluminum, white	PC25 1-1/2" x 1-1/2" x 1" plastic cube louver, silver w/ flange <sup>1</sup>		GLR Internal fast-blow fuse <sup>3</sup>
							GMF Internal slow-blow fuse <sup>3</sup>
							LST Tandem-wired fixture pairs (shared ballasts)
							<b>PWS1836</b> 6' prewire, 3/8" dia., 18-gauge, 1 circuit
							LP_ Lamped, specify lamp type and color
							PAF Painted after fabrication (white enamel)
							SSR Specular silver interior finish (95% reflective)
							CRE Flanged trim for continuous row mounting (end)
							CRM Flanged trim for continuous row mounting (middle)
							JP Palletized and stretch-wrapped without individual cartons; grid trim only
							<b>CSA</b> CSA Certified
							<b>NOM</b> NOM Certified

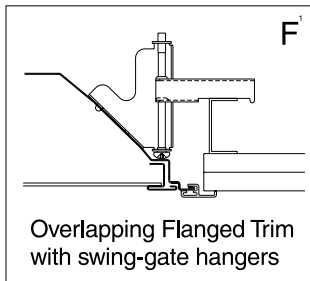
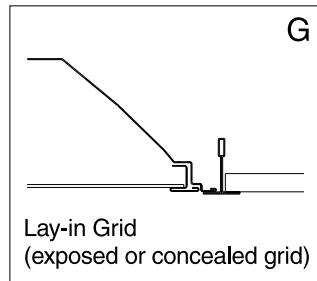
### NOTES:

- Available with flush door frames only.
- MVOLT standard for 120-277V applications, 50-60hz operations require voltage specified.
- Must specify voltage 120 or 277.

# GT8 1'x4' Static Troffer

## MOUNTING DATA

Continuous row mounting of flanged units requires CRE and CRM trim options (see Options).

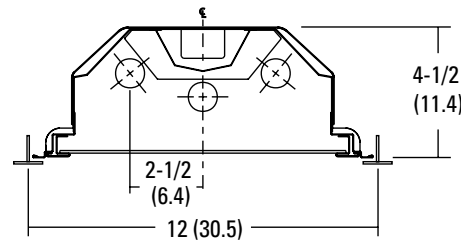
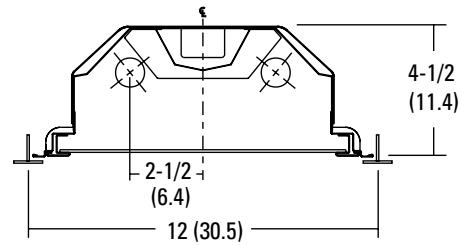


**NOTE:**

1 Recommended rough-in dimensions for F-trim fixtures 12"x48" (Tolerance is +1/4"-0"). Swing-gate range 1-9/16" to 3-3/4". Swing-gate span 10-3/4" to 14-3/4".

## DIMENSIONS

All dimensions are inches (centimeters) unless otherwise indicated.



## PHOTOMETRICS

Calculated using the zonal cavity method in accordance with IESNA LM41 procedure. Floor reflectances are 20%. Lamp configurations shown are typical. Full photometric data on these and other configurations available upon request.

**GT8 2 32 A12**

Report: **LTL12536**

LUMENS PER LAMP: **2850**

Luminaire Efficiency: **77.7%**

**Coefficients of Utilization**

RCR	pw	Coefficients of Utilization											
		80%		50%			30%			20%			
		70%	50%	30%	50%	30%	10%	50%	30%	10%	80%	83	83
0	92	92	92	86	86	86	86	83	83	83			
1	85	82	79	77	74	72	74	72	70				
2	78	72	67	68	64	61	66	63	60				
3	72	64	58	61	56	52	59	55	51				
4	66	58	51	55	50	45	53	48	45				
5	61	52	45	49	44	40	48	43	39				
6	57	47	40	45	39	35	44	39	35				
7	53	43	36	41	36	32	40	35	31				
8	49	39	33	38	32	28	37	32	28				
9	46	36	30	35	30	26	34	29	26				
10	43	33	28	32	27	24	32	27	23				

**Zonal Lumen Summary**

Zone	Lumens	% Lamp	% Fixture
0° - 30°	1471	25.8	33.2
0° - 40°	2347	41.2	53.0
0° - 60°	3777	66.3	85.3
0° - 90°	4426	77.7	100.0
90° - 180°	0	0.0	0.0
0° - 180°	4426	77.7	100.0