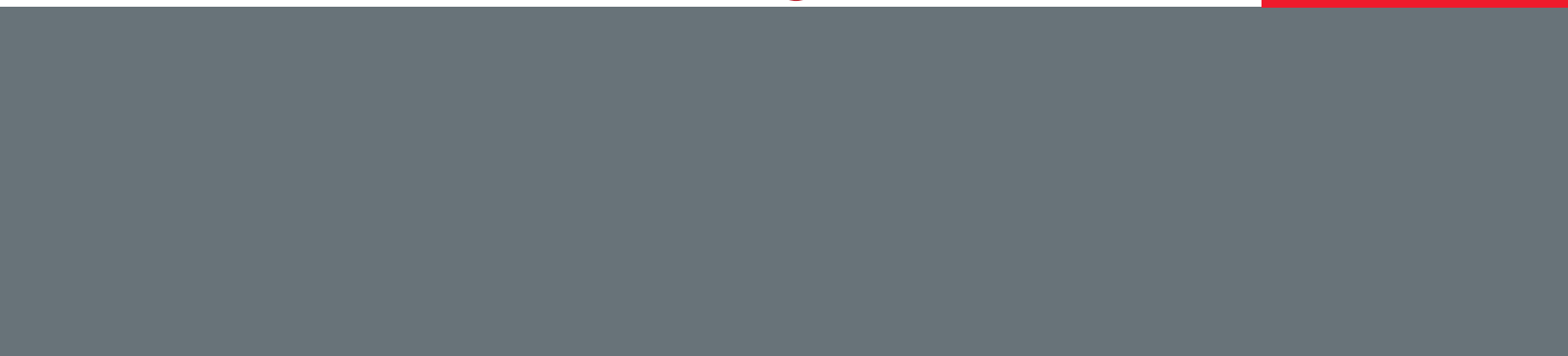




PARKING GARAGE

FEATURING
ARCHWAY™ PASSAGE™

PARKING GARAGES CANOPIES CORRECTIONAL FACILITIES MILITARY SPACES TUNNELS
 SHIPPING DOCKS SCHOOL KITCHENS LOCKER ROOMS HALLWAYS INDUSTRIAL FACILITIES
 RETAIL MALLS TRANSIT AREAS CORRIDORS STAIRWELLS GARDEN CENTERS PARKING
 GARAGES CANOPIES CORRECTIONAL FACILITIES MILITARY SPACES TUNNELS SHIPPING
 SCHOOL KITCHENS LOCKER ROOMS HALLWAYS INDUSTRIAL FACILITIES RETAIL MALLS
 SIT AREAS CORRIDORS STAIRWELLS GARDEN CENTERS PARKING GARAGES CANOPIES
 CORRECTIONAL FACILITIES MILITARY SPACES TUNNELS SHIPPING DOCKS SCHOOL KITCHENS
 LOCKER ROOMS HALLWAYS INDUSTRIAL FACILITIES RETAIL MALLS TRANSIT AREAS
 CORRIDORS STAIRWELLS GARDEN CENTERS PARKING GARAGES CANOPIES CORRECTIONAL
 FACILITIES MILITARY SPACES TUNNELS SHIPPING DOCKS SCHOOL KITCHENS LOCKER
 ROOMS HALLWAYS INDUSTRIAL FACILITIES RETAIL MALLS TRANSIT AREAS CORRIDORS STAIR
 WELLS GARDEN CENTERS PARKING GARAGES CANOPIES CORRECTIONAL FACILITIES MILITARY SPACES TUNNELS
 SHIPPING DOCKS SCHOOL KITCHENS LOCKER ROOMS HALLWAYS INDUSTRIAL FACILITIES
 RETAIL MALLS TRANSIT AREAS CORRIDORS STAIRWELLS GARDEN CENTERS PARKING
 GARAGES CANOPIES CORRECTIONAL FACILITIES MILITARY SPACES TUNNELS SHIPPING
 SCHOOL KITCHENS LOCKER ROOMS HALLWAYS INDUSTRIAL FACILITIES RETAIL MALLS
 SIT AREAS CORRIDORS STAIRWELLS GARDEN CENTERS PARKING GARAGES CANOPIES
 CORRECTIONAL FACILITIES MILITARY SPACES TUNNELS SHIPPING DOCKS SCHOOL KITCHENS
 LOCKER ROOMS HALLWAYS INDUSTRIAL FACILITIES RETAIL MALLS TRANSIT AREAS
 CORRIDORS STAIRWELLS GARDEN CENTERS PARKING GARAGES CANOPIES CORRECTIONAL
 FACILITIES MILITARY SPACES TUNNELS SHIPPING DOCKS SCHOOL KITCHENS LOCKER
 ROOMS HALLWAYS INDUSTRIAL FACILITIES RETAIL MALLS TRANSIT AREAS CORRIDORS STAIR





ARCHWAY™ PASSAGE™

NEW



VAP

- 2-lamp maximum; T8, T5 or T5HO
- 4' long; unit or row installation
- IP65 rated
- Ambient operation from -20°F to 104°F
- Surface or suspended mount
- Polycarbonate lens and housing

Lithonia Lighting has a comprehensive line of rough-service fixtures that can be used in several applications such as parking garages, transit stations, locker rooms, retail malls and garden centers, to name a few. The newest member in this line is the ARCHWAY™ PASSAGE™ (VAP) linear fluorescent fixture.

With its energy-saving design, several mounting options and superior light output, the ARCHWAY™ PASSAGE™ fixture is ideal where safety and security are a concern. In addition, its sleek modern appearance and decorative light control film options complement many different spaces.

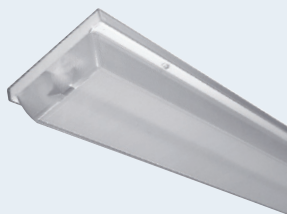
This guide provides a broad overview of our product offering so you can see at a glance which fixture(s) may work best for your application requirements. For more detailed information on each product, please refer to the specification sheets located on www.lithonia.com.



Linear Fixtures WITH REFLECTORS



FPG



- 2-lamp maximum; T8, T5 or T5HO
- 4' long; unit or row installation
- Damp location listed
- Ambient operation from -20°F to 77°F
- Surface mount
- Polycarbonate lens, steel backplate

FSW



- 2-lamp maximum; T8 or T5HO
- 4' or 8' long; unit or row installation
- IP65 rated
- Ambient operation from -20°F to 104°F
- Surface or suspended mount
- Acrylic lens, fiberglass housing

FEN



- 1-lamp maximum; T8, T5 or T5HO
- 4' long; unit or row installation
- IP65 and IP67 rated; NSF certified
- Ambient operation from -20°F to 104°F
- Surface or suspended mount
- Polycarbonate or acrylic lens, fiberglass housing

FEM



- 2-lamp maximum; T8, T5 or T5HO
- 2', 4' or 8' long; unit or row installation
- IP65 and IP67 rated; NSF certified
- Ambient operation from -20°F to 104°F
- Surface or suspended mount
- Polycarbonate or acrylic lens, fiberglass housing

Linear Fixtures WITHOUT REFLECTORS

HID, COMPACT FLUORESCENT & INDUCTION



PGR



TGL



TGR



KACM



KPS



VR4C & VR4CV



DMW

- 3-lamp maximum; T8, T5 or T5HO
- 4' or 8' long; unit or row installation
- IP65 and IP67 rated; NSF Splash Zone certified
- Ambient operation from -20°F to 77°F
- Surface or suspended mount
- Acrylic lens, fiberglass housing



VSL & VSLC

- 1-lamp maximum (VSLC) or 2-lamp maximum (VSL); T8, T5 or T5HO
- 2' or 4' long; unit or row installation
- Wet location listed
- Ambient operation from -20°F to 77°F
- Surface mount
- Polycarbonate lens, steel backplate



XWL

- 2-lamp maximum; T8 or T5HO
- 4' long; unit or row installation
- IP65 rated
- Ambient operation from -20°F to 77°F
- Surface or suspended mount
- Polycarbonate lens and housing



VRI

- 3-lamp maximum; T8, T5 or T5HO
- 4' or 8' long; unit or row installation
- IP65 and IP67 rated
- Ambient operation from -20°F to 77°F
- Surface or suspended mount
- Acrylic or polycarbonate lens, fiberglass housing



EGW

- 2-lamp maximum; T8 or T5HO
- 2', 4' or 8' long; unit or row installation
- IP65 and IP67 rated; wet location listed
- Ambient operation from -20°F to 77°F
- Surface or suspended mount
- Acrylic lens, fiberglass housing



VDC & VDS

- 2-lamp maximum; T8, T5 or T5HO
- 4' long; unit or row installation
- Wet location listed
- Ambient operation from -20°F to 77°F
- Surface mount
- Polycarbonate lens, steel housing



An Acuity Brands Company

One Lithonia Way
Conyers, GA 30012
800-315-4963
www.lithonia.com