

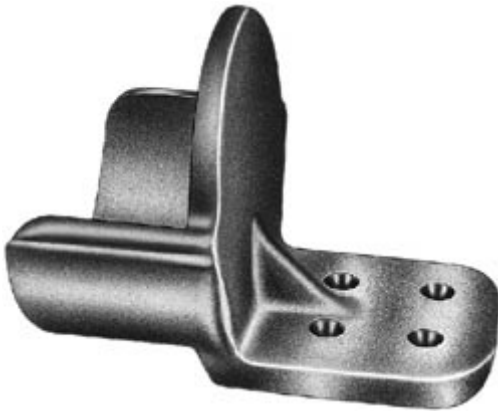


[Catalog Home](#)

Product Datasheet



ANDERSON FARGO

WSTF10CCF -- Terminal, Aluminum Weldment



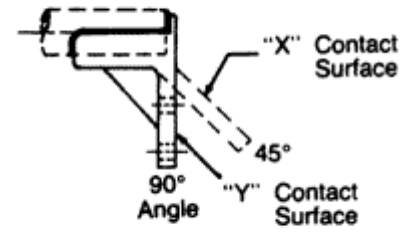
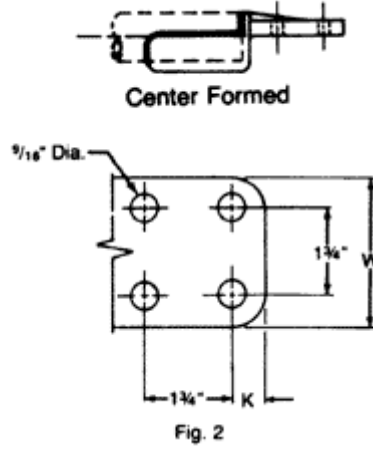
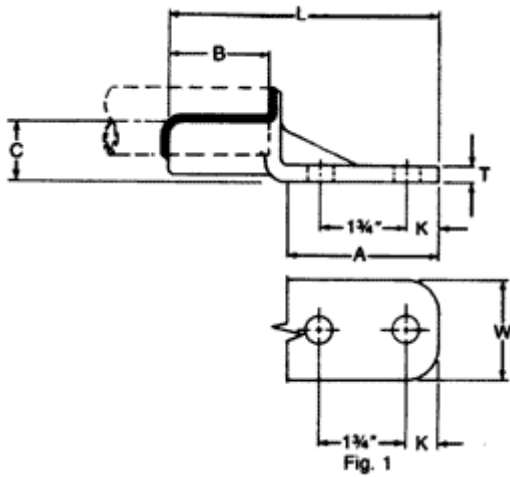
Terminal, Aluminum Weldment, Tube to Flat, tube size 1 IPS, Centerformed Pad: 4 hole, 3 in

Product Specifications

<p>Family Image</p>	 <p>Terminals</p>
<p>Terminals</p>	 <p>WSTF Series Tube to Flat Aluminum Weldment Terminals</p>
<p>PDF Catalog Page</p>	<p>Click HERE to view the web page.</p>
<p>Pad Holes</p>	<p>4</p>
<p>Pad Width</p>	<p>3 in</p>
<p>Pad Position</p>	<p>Centerformed</p>
<p>Material Type</p>	<p>Non-Standard</p>
<p>Standard Package</p>	<p>1</p>
<p>Standard Package Unit</p>	<p>Each</p>
<p>Min Order Qty</p>	<p>1</p>
<p>Weight / Ea.</p>	<p>0.784 lbs</p>

Compressed Product Number

WSTF10CCF



[Catalog Home](#)



[Warranty Info](#) | [Trademarks](#) | [Terms of Use](#)

All contents Copyright © 2007 Hubbell Power Systems, Inc. All rights reserved.

NOTE: Because Hubbell has a policy of continuous product improvement, we reserve the right to change design and specifications without notice.