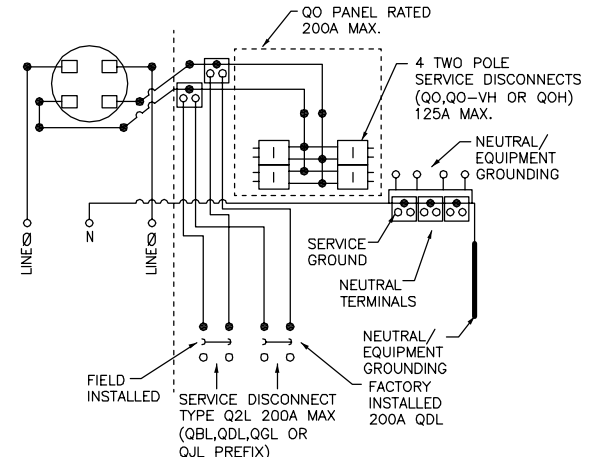
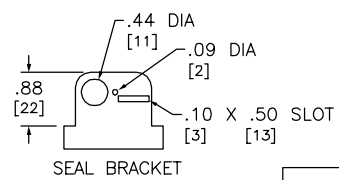
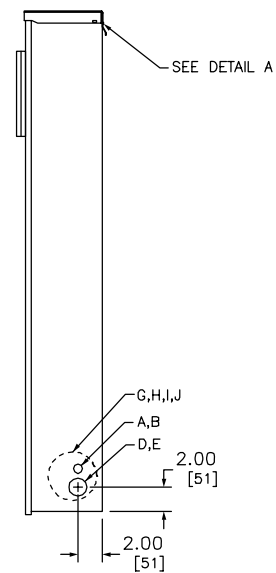
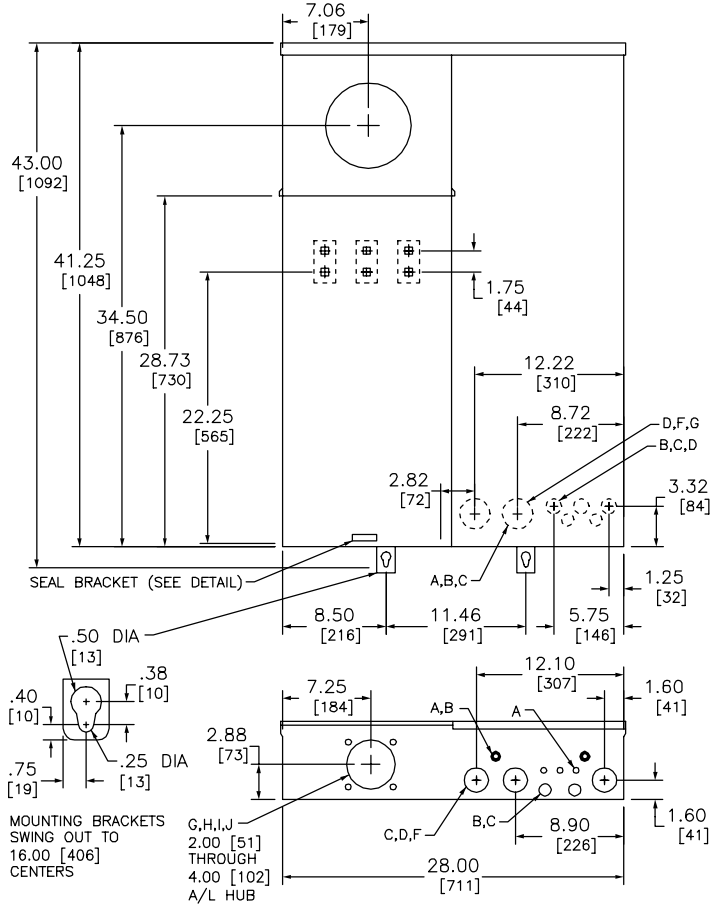


KNOCKOUTS		
SYMBOL	CONDUIT SIZE	
	IN	MM
A	.50	13
B	.75	19
C	1.00	25
D	1.25	32
E	1.50	38
F	2.00	51
G	2.50	64
H	3.00	76
I	3.50	89
J	4.00	102



INTERRUPTING RATING RMS SYMMETRICAL AMPERES @ 240 VAC MAX.	SERVICE DISCONNECT	
	CATALOG DESIGNATION	CURRENT RATING AMPERE MAX.
10,000	Q0	125
22,000	Q0-VH	125
42,000	Q0H	125
10,000	QBL	200
25,000	QDL	200
65,000	QGL	200
100,000	QJL	200

USE ONLY SQUARE D SERVICE DISCONNECTS WITH PREFIXES Q0, QB, QD, QG OR QJ AND REPLACEMENT PARTS, WITH THIS PRODUCT. USE OF OTHER COMPONENTS VOIDS THE WARRANTY, MAY VOID THE UL LISTING AND MAY RESULT IN PROPERTY LOSS OR PERSONAL INJURY.

A SQUARE D UL LISTED SECONDARY SURGE ARRESTER MAY PLUG ON TWO ADJACENT SPACES. ORDER CATALOG NO Q02175SB.

NOTES:  
 FINISH - GRAY BAKED ENAMEL POWDER COAT PAINT OVER CLEANED GALVANNEALED STEEL.  
 UL LISTED - FILE E-6294, VOL. M  
 SUITABLE ONLY FOR USE AS SERVICE EQUIPMENT. INSTALL NO MORE THAN SIX MAIN DISCONNECTING MEANS.  
 SUITABLE FOR UNDERGROUND SERVICE ONLY. FOR OVERHEAD SERVICE ENTRANCE, ORDER OCK400 OVERHEAD FEED TROUGH.  
 \* CU12L400CN MEETS EUSERC SPECIFICATIONS.  
 CONVERTIBLE TO SEMIFLUSH WITH FK400 FLANGE KIT.

DUAL DIMENSIONS: INCHES MILLIMETERS

CATALOG NUMBER	SERIES	METER SOCKET CLASS	BYPASS TYPE	MAXIMUM SYSTEM VOLTAGE	MAINS AMPERE RATING	SPACES	MAXIMUM NUMBER OF TWO POLE CIRCUITS	MAIN WIRE SIZE AWG/kcmil AL/CU
CU12L400CN *	M03	CLASS 320 4 JAW	NONE	120/240VAC 1Ø 3W	400	12	6	SUPPLIED WITH LUG PADS - ORDER LUGS SEPARATELY
CU12L400CB	M03		MANUAL					

COMBINATION SERVICE ENTRANCE DEVICES  
 RING TYPE METER MAIN  
 RAINPROOF NEMA TYPE 3R ENCLOSURE  
 SURFACE/SEMIFLUSH



DWG# 3312  
NO.