



[Catalog Home](#)

**Product Datasheet**



**ANDERSON FARGO**

**GL121 -- Automatic Splice**



Automatic Splice, for Copper, Copperweld, Dia. Range 0.57 - 0.58 in.

**Product Specifications**

<p><b>Splice Type</b></p>	 <p>Automatic Splices</p>
<p><b>Automatic Splice Series</b></p>	 <p>GL-100 Series Automatic Splice Copper Copper &amp; Copperweld® Conductor</p>
<p><b>PDF Catalog Page</b></p>	<p><a href="#">Click HERE to view the web page.</a></p>
<p><b>Conductor Type</b></p>	<p>Copperweld</p>
<p><b>Automatic Conductor Range</b></p>	<p>250 str CU</p>
<p><b>Material</b></p>	<p>Copper</p>
<p><b>Gripper Material</b></p>	<p>Bronze Alloy</p>
<p><b>Minimum Conductor Diameter</b></p>	<p>0.57 in</p>
<p><b>Maximum Conductor Diameter</b></p>	<p>0.58 in</p>
<p><b>Outside Diameter</b></p>	<p>.57 - .58 in (14.4 - 14.7 mm)</p>
<p><b>Dimension A</b></p>	<p>6.9 in (180 mm)</p>
<p><b>Dimension B</b></p>	<p>1.2 in (32 mm)</p>
<p><b>UL Listed</b></p>	<p>No</p>
<p><b>Inhibitor Loaded</b></p>	<p>Yes</p>
<p><b>Color Code</b></p>	<p>None</p>
<p><b>Material Type</b></p>	<p>Non-Standard</p>
<p><b>UPC Code</b></p>	<p>09635931158</p>
<p><b>Standard Package</b></p>	<p>50</p>
<p><b>Standard Package Unit</b></p>	<p>Each</p>

<b>Min Order Qty</b>	50
<b>Weight / Ea.</b>	1.019 lbs

### Notes

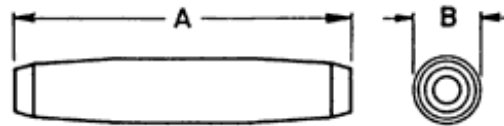
Consult Factory for conductor sizes not listed.

### Features

Individually bagged to seal out dirt before use.

### Compressed Product Number

GL121



Ref Dimension A & B

[Catalog Home](#)



[Warranty Info](#) | [Trademarks](#) | [Terms of Use](#)

*All contents Copyright © 2007 Hubbell Power Systems, Inc. All rights reserved.*

NOTE: Because Hubbell has a policy of continuous product improvement, we reserve the right to change design and specifications without notice.