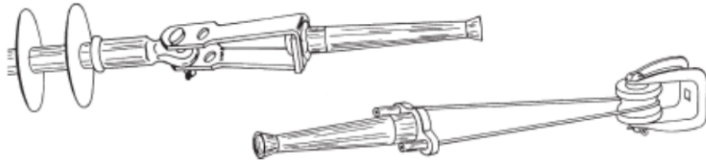




DEADENDS AUTOMATIC ALUMINUM

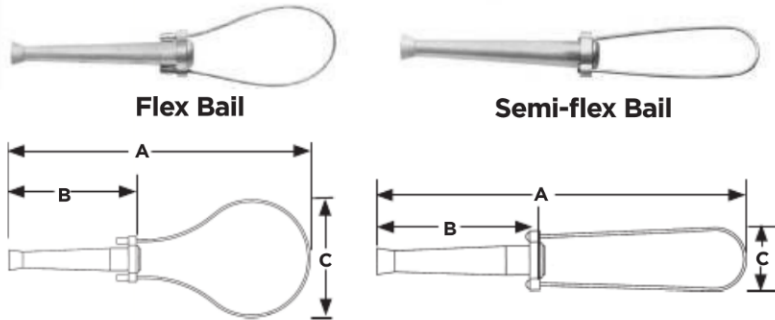
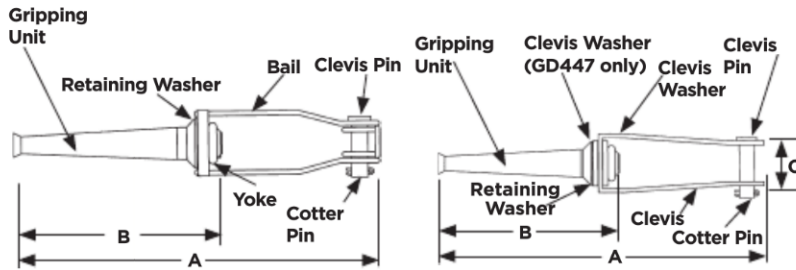
DA
2

ALUMINUM
GD400



Z Bail

Clevis Bail



Flex Bail

Semi-flex Bail

- Fastest method of deadending ACSR, AAAC, and AAC conductor
- Color coded funnel guide for easy identification. Flared conductor funnel guides ease installation.
- Aluminum alloy shell and inhibitor protected aluminum jaws assure corrosion resistance.
- Available with galvanized steel stirrup clevis or stainless steel Z bail for primary applications. Flexible or semiflexible stainless steel bails can be used on secondary applications.
- See GDW Series for range-taking automatic deadends.

Note: For neoprene covered Flex or Semi-flex bail add suffix "N".
Example GD402AN
Add suffix "TA" for pulling eye.
Example GD4442ATA (Fig #1)

Material: **Shell** - High Strength Aluminum Alloy
Jaws - Aluminum Alloy
Clevis Bail - Aluminum Alloy or Galvanized Steel
Z Bail - Stainless Steel, Formed Wire
Flex Bail - Braided Stainless Steel
Semi-flex Bail - Stainless Steel, Formed Wire
Pulling Eye - Aluminum Alloy

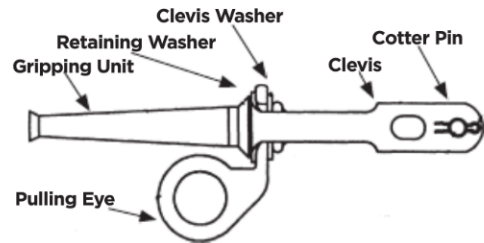


Fig #1

Product Data & Conductor Size

CATALOG NUMBER	BAIL TYPE	STD. COND. SIZES	DIMENSIONS			OTHER INFORMATION		APPROX. WT. EACH LBS. (KG)
			A	B	C	DIA. RANGE IN. (MM)	COLOR CODE	
GD442A*	CLEVIS	#4 ACSR (6/1) #4 AAAC #4 AAC	11.0	5.0	-	.225-.250 (5.59-6.35)	ORANGE	0.56 (.25)
GD402AZ*	SS Z		10.4	5.0	-			0.43 (.19)
GD402A*	SS FLEX		12.8	5.0	2.0			0.20 (.09)
GD462A*	SEMI-FLEX		12.0	5.0	2.2			0.24 (.10)
GD4442A*	CLEVIS	#4 - #2 ACSR #4 - #2 AAAC #4 - #2 AAC	12.9	7.0	-	.220-.320 (5.59-8.13)	RED-ORANGE	0.63 (.29)
GD4042AZ*	SS Z		12.0	7.0	-			1.00 (.45)
GD4042A*	SS FLEX		13.7	7.0	2.0			0.34 (.15)
GD4642A*	SEMI-FLEX		14.4	7.0	2.2			0.38 (.17)

*RUS Listed



DEADENDS AUTOMATIC ALUMINUM (CONTINUED)

ALUMINUM
GD400

DA
3

Product Data & Conductor Size

CATALOG NUMBER	BAIL TYPE	STD. COND. SIZES	DIMENSIONS			OTHER INFORMATION		APPROX. WT. EACH LBS. (KG)
			A	B	C	DIA. RANGE IN. (MM)	COLOR CODE	
GD446A**	CLEVIS	1/0 ACSR 1/0 AAAC 1/0 AAC	12.3	6.4	-	.355-.400 (9.02-10.16)	YELLOW	1.02 (.46)
GD406AZ**	SS Z		14.2	6.4	-			0.20 (.09)
GD406A**	SS FLEX		15.3	6.4	2.0			0.40 (.18)
GD466A**	SEMI-FLEX		15.8	6.4	2.2			0.30 (.14)
GD447**	CLEVIS	2/0 ACSR 2/0 AAAC 2/0 AAC	17.8	9.3	-	.400-.470 (10.15-11.94)	GRAY	2.23 (1.01)
GD407Z**	SS Z		17.6	9.3	-			1.40 (.64)
GD407**	SS FLEX		15.5	9.3	2.0			0.76 (.35)
GD467**	SEMI-FLEX		18.4	9.3	2.2			1.10 (.49)
GD448**	CLEVIS	3/0 ACSR 3/0 AAAC 3/0 AAC	18.9	10.0	-	.450-.530 (11.43-13.46)	BLACK	2.40 (1.09)
GD408Z**	SS Z		18.0	10.0	-			1.40 (.63)
GD408**	SS FLEX		17.6	10.0	2.0			1.16 (.53)
GD468**	SEMI-FLEX		19.0	10.0	2.2			1.10 (.50)
GD449A**	CLEVIS	4/0 ACSR 4/0 AAC 4/0 AAAC	17.5	9.0	-	.505-.595 (12.83-15.11)	PINK	2.43 (1.10)
GD409AZ**	SS Z		17.2	9.0	-			1.40 (.63)
GD409A**	SS FLEX		17.6	9.0	2.0			1.00 (.45)
GD469A**	SEMI-FLEX		18.0	9.0	2.2			1.00 (.45)
GD5205A	CLEVIS	266.8 AAC	11.6	4.6	-	.518-.595 (13.16-15.11)	-	1.32 (.59)
GD1205AZ	SS Z		12.8	4.6	-			1.00 (.45)
GD1205A	SS FLEX		13.6	4.6	2.0			0.64 (.29)
GD1205AR	SEMI-FLEX		14.4	4.6	2.2			0.66 (.29)
GD450*	CLEVIS	266.8 (18/1)	18.5	9.6	-	.603-.666 (15.32-16.92)	BROWN	2.70 (1.22)
GD410Z*	SS Z	ACSR	20.4	9.6	-			1.80 (.82)
GD410*	SS FLEX	312.8 AAAC	16.9	9.6	2.0			1.20 (.54)
GD470*	SEMI-FLEX	336.4 AAC(1)	17.8	9.6	1.9			1.40 (.64)
GD451*	CLEVIS	336.4 (18/1)	18.9	10.5	-	.659-.724 (16.74-18.39)	GREEN	2.0 (.90)
GD411Z*	SS Z	ACSR	20.8	10.5	-			2.10 (.95)
GD411*	SS FLEX	394.5 AAAC	17.7	10.5	2.0			1.80 (.82)
GD471*	SEMI-FLEX	397.5 AAC(1)	18.6	10.5	1.9			1.70 (.77)
-	CLEVIS	397.5 (18/1)	-	-	-	.722-.795 (18.34-20.19)	BLUE	-
GD412Z*	SS Z	ACSR	19.6	11.3	-			2.40 (1.08)
GD412*	SS FLEX	465.4 AAAC	19.0	11.3	2.0			2.00 (.91)
GD472*	SEMI-FLEX	477 AAC (1)	19.3	11.3	1.9			2.00 (.91)

*Maximum design rating 10,000 Lb./4535 kg.
 **RUS Listed
 (1) Includes compact conductor of each size
 (2) For neoprene covered bail add suffix "N" Ex. GD406AN.