

Section 4

Panelboards



NQ Panelboard with Door-in-Door (Hinged) Trim



MH38 Enclosure with 12-inch Wireway and Mono-Flat™ Trim with 12-inch Wireway Cover

<b>Panelboards</b>	<b>4-2</b>
General Information	4-2
General Instructions	4-2
<b>Special Features</b>	<b>4-2</b>
Mains and Branches	4-2
Mains	4-2
Branches	4-2
Cabinets	4-3
Special Features	4-3
<b>Surge Protection Devices (SPD) in Panelboards</b>	<b>4-8</b>
NQ Panelboard with SPD	4-8
NF Merchandised Interiors with SPD - 480Y/277 Vac	4-8
<b>Ready-to-Install (RTI) Merchandise</b>	<b>4-9</b>
Miscellaneous Panelboard Accessories	4-9
Copper Equipment Ground Bars	4-9
NF and NQ Panelboard Replacement Part Kits	4-9
Type 1 Door-in-Door (Hinged) Trim Fronts	4-14
<b>Replacement Parts for Standard Panelboards</b>	<b>4-15</b>
Trim Clamps and Screws	4-15
Trim Clamps and Screws	4-15
Locks and Keys	4-16
Locks	4-16
Keys	4-16
NQ IP2X "Fingersafe" Panelboard Replacement Parts	4-16
<b>CTC Cabinets</b>	<b>4-17</b>
Wall Mounted Metering Equipment	4-17
Main Circuit Breaker and Current Transformer Compartment	4-17
<b>Retrofit Information</b>	<b>4-17</b>
Retrofit Existing Enclosure Data Sheet	4-17
Data Sheet for Panelboards to Retrofit Existing Enclosures	4-17

FAQs

Visit the online FAQs page to find additional technical information covering all products including discontinued and obsolete products.

<https://www.se.com/us/en/faqs/home/>

General Instructions

The special feature options covered in this Panelboard estimating procedure are applicable to factory-assembled panelboards only. Do not apply this pricing to ready-to-assemble panelboards.

Special features are listed in three major categories:

- Mains
- Branches
- Cabinets

Metric Conversion

Inches (in.) x 25.4 = millimeters (mm).

I-Line™ Panelboards Factory Assembled

Panel Type	No. Poles	Main Circuit Breaker					
		400 A			600 A		
		LX[1]	LE[1]	LXI [1]	LX[1]	LE[1]	LXI[1]
HCP, HCP-SU	2						
	3						

Mains

NEMA Type 1 Enclosures Only (1200 A Maximum)

Enclosures and Interiors are shipped fully assembled.

NQ, NF and Powerlink™ require a 7-inch left side gutter extension and a 6-inch main end extension for PowerLogic Power Meter applications.

I-Line™ and QMB require a 14-inch side gutter extension for PowerLogic Circuit Monitor and Power Meter applications.

Current Transformers In Mains (ac only and line side only)[1]

Prices listed are based on transformers having a 5 A secondary and mounted under a separate cover. Apply appropriate charge from the table below

Table 4.1: Current Transformers

Primary Amperes (5 A—Secondary)	Additional Enclosure Height Required [2]
100–1200	6 inches

Customer Equipment Space[1]

**NOTE:** End user must specify end use equipment to be installed.

Available with NQ, and NF lighting panelboards only. Must be opposite the mains end, both main breaker and main lug, to prevent interference with incoming cables. Customer equipment space is not available with thru-feed lugs or sub-feed breakers.

A barrier exists between the equipment space and the panelboard compartment; a separate door is provided as standard (requires 18-inch additional enclosure height).

**NOTE:** A separate door is not supplied in NEMA 3R/12 construction.

Branches

Keyed Interlocks

**NOTE:** Not available for use in NQ, NF or I-Line™ HCN panelboards with door. Not available on I-Line™ with door when key interlocked MG/MJ/P/R frame branch-mounted circuit breakers are installed. Must use 4-piece trim or NEMA 3R/12.

Keyed mechanical interlocking of two or more circuits is available on request. Individual locks are furnished for each circuit. All locks operate by one key, which can be removed only when the circuit is locked in the desired position.

I-Line Circuit Breakers — A 3-inch filler adjacent to the circuit is necessary for mounting the interlock; contact your nearest Schneider Electric sales office for assistance with power distribution panelboards with doors. Feature not available on vertically mounted main circuit breaker.

QMB Fusible Switches — Available on 100 A singles (100 A single QMB requires 9 inches of mounting space) through 800 A switches plus LA circuit breaker adapters. Requires 3 inches of branch mounting space per switch for interlock installation.

Motor Operators—I-Line Circuit Breakers Only

Motor operators provide remote *open*, *close*, and *reset* control of molded case circuit breakers. Price panelboard from the latest Digest, and, for each motor operator, add per table below. In I-Line panelboards, motor operators require 4.5 inches of circuit breaker mounting space. This can be provided on I-Line main circuit breaker only when the main is branch-mounted and back-fed.

**NOTE:** Not available in I-Line HCN Panelboards



[1] Std. construction back-fed main.  
[1] Feature supported by product selectors in Q2C and SE Advantage.  
[2] For NQ, and NF panelboards.

**Table 4.2: Motor Operators**

Circuit Breaker Type	Motor Operator Voltage
F-frame	120 Vac
H-frame (3P modules only)	48/60, 110/130, 208/277, 380/480 Vac; 24/30, 48/60, 110/130, 250 Vdc
J-frame	48/60, 110/130, 208/277, 380/480 Vac; 24/30, 48/60, 110/130, 250 Vdc
LA, LH	120 Vac
PG, PJ, PL	48, 110/130, 220/240, 380/480 Vac; 24/30, 48/60, 110/130, 200/250 Vdc

**NOTE:** If the customer is not supplying the motor operator voltage, a control transformer can be supplied.

## Special Features

### Cabinets

#### Increased Enclosure Depth

##### NEMA Type 1 Enclosure<sup>[3]</sup>

8-inch depth (HC26)

12-inch depth (HC32, 42, 44-12-inch only)

##### NEMA Type 3R, 5, or 12 Enclosure<sup>[3]</sup>

8-inch or 12-inch depth

**NOTE:** No other depths are available.

#### Increased Side Gutters (Type 1 Enclosures Only)

**NOTE:** Available on MH enclosures (right or left) in 3, 6 and 12-inch added widths, 26-inch wide HC enclosures up to a maximum of 14 additional inches and 32-inch wide HC enclosures up to a maximum of 10 additional inches.

Not available on 42-inch wide HC enclosures.

No barrier will be supplied unless specified.

Includes one-piece trim.

Provide extended side gutters.

#### Steel Barrier in Enclosure

**NOTE:** The enclosure will be extended on one side only. If extension is required on both sides, contact your nearest Schneider Electric sales office for assistance.

#### Extended Top and Bottom End Gutters

**NOTE:** Available for Type 1 enclosures only

##### Type MH Enclosures

6-inch, 12-inch, 18-inch or 24-inch extension. Includes one-piece trim.

##### Type, HCM Enclosures

9-inch extension. Includes standard panel trim and enclosure extension cover.

##### Type HCP, HCR-U Enclosures

12-inch extension. Includes standard panel trim and enclosure extension cover.

##### Type QMB Enclosures

38-inch W x 11.5-inch D may have a 6-inch maximum increased end gutter. This is the only QMB enclosure with an increased end gutter option. Available only with a four-piece trim.

For lengths other than those listed above, refer to the Wireway section on page 4-8.

#### Drip Hoods<sup>[3]</sup>

Surface-mounted-only panelboard

#### Special Finishes

**NOTE:** The standard finish of the enclosure fronts is ANSI 49. The enclosures are galvanized steel.

##### ANSI 49 Enclosure<sup>[3]</sup>

##### ANSI 61 Front or Enclosure<sup>[3]</sup>

#### Front and Enclosure with Polyester Acrylic Powder Paint Finish

Provides increased salt spray performance in coastal areas and increased resistance to UV fading

#### Special or Custom Paint for Trim and/or Enclosure

##### Free-standing Enclosures (welded base channels)<sup>[4]</sup>

Supports extending out front and back, welded to bottom of enclosure



MH38 Enclosure with 6-inch Increased Left-side Gutter



MH38 Enclosure with 12-inch Extended Bottom End Gutter and One-Piece Trim

<sup>[3]</sup> Feature supported by product selectors in Q2C and SE Advantage.  
<sup>[4]</sup> Base channels are available only for indoor applications.



Hinged Trim

**Special Trims****Hinged Trim****Hinged Trim with Outer Door Lock<sup>[5]</sup>**

**NOTE:** Outer door lock, must be priced with hinged trim.  
For door-in-door trim, use hinged trim with outer door lock. "ODL" suffix is added to trim front part number.

**Stainless Steel Trim Fronts<sup>[5]</sup>**

NF & NQ 20 inch-wide Mono-flat or Hinged right surface or flush trim fronts for panelboard heights up to 92 inches.

Mono-flat vented and three point latch trim fronts for 400A and 600A panelboards available in heights from 50 to 92 inches.

NF & NQ 26 inch-wide Mono-flat vented surface or flush trim fronts available for panelboard heights from 50 to 92 inches.

I-Line HCM—Standard trim with door

I-Line HCP—Standard trim with door

**Special Locks<sup>[5]</sup>****Padlock Hasp<sup>[5]</sup>**

For hasp, staple and standard lock (padlock not included) "PH" suffix is added to trim front part number.

**Special Locks**

On trim with a 3-point latch, special locks will be installed as a secondary latch. Special locks include Corbin 60, Corbin 15767, GE 75, Yale® 511S and Best 5L7RL2-626. For all other locks, contact your nearest Schneider Electric sales office for assistance.

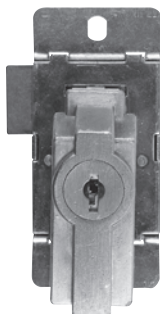
Standard key change, Corbin 60, Corbin 15767 or GE 75<sup>[5]</sup>

Standard key change, Yale 511S<sup>[5]</sup>

Standard key change, Best 5L7RL2-626<sup>[5]</sup>

Quarter turn fasteners

**NOTE:** Special locks for all HC trims and NF panelboards with three-point latches, will be installed as secondary locks. Special locks are not available on I-Line™ 42-inch and 44-inch wide panelboards or QMB type panelboards.  
Many key configurations can be accommodated with our standard Square D™ brand lock. Contact your nearest Schneider Electric sales office for assistance.

NC38S  
Padlock Hasp

Corbin 15767 Lock

NC38S with  
Yale Lock Installed

<sup>[5]</sup> Feature supported by product selectors in Q2C and SE Advantage.



Common Trim Front for Use with Multiple-Section Panelboards Mounted Side-By-Side



Panel skirt framework to be bolted to the wall.



Panel skirt bolted in place below an MH26 enclosure.



Panel skirt completely installed.

**Multi-Section Panels**

**Equal-Height Enclosures<sup>[6]</sup>**

NQ, and NF  
I-Line or QMB

**Common Trim in Place of Two Individual Fronts<sup>[6]</sup>**

Used to cover two equal-height enclosures mounted side-by-side.

**Sheared on Inside Edges**

Allows enclosures to be butted together.

**Panel Skirt for Standard Width Panelboards <sup>[6]</sup>**

Panel skirts are intended for cosmetic purposes only; they are meant to hide cables which are enclosed in conduit.  
Do not use a panel skirt as a wireway; see the Wireway section below.  
**NOTE:** Panel skirts are for Type 1 surface-mounted applications with standard depth and width, Square D™ brand enclosures only.

**Table 4.3: Panel Skirts**

Skirt Length		
	NQ, NF	I-Line™, QMB
4–60 inches	PSxx[7]	
61–92 inches	N/A	

<sup>[6]</sup> Feature supported by product selectors in Q2C and SE Advantage.  
<sup>[7]</sup> Panel Skirts supplied as a Commercial Reference has a PSxx part number, where xx is the length in inches.



MH38 enclosure with 12-inch wireway and Mono-Flat™ trim with 12-inch wireway cover.

### Wireway

Allows for terminating conduit in the wireway endwall. Only the cable passes through the wireway into the NEMA Type 1 panelboard enclosure. Includes trim and wireway cover.

**NOTE:** Wireway is for Type 1, surface-mounted applications with standard depth and width, Square D™ brand enclosures only.

**Table 4.4: Wireway**

Wireway Length	NQ, NF	
	WWxx <sup>[8]</sup>	I-Line™, QMB
4–60 inches	WWxx <sup>[8]</sup>	
61–92 inches	N/A	

### Panels to Fit Existing Enclosures

Panelboard interiors and special fronts can be furnished to fit existing enclosures. First, price the complete panel along with the appropriate price adder from below. Next, photocopy the Retrofit Existing Enclosure data sheet found on [page 4-17](#), record the required dimensions on the photocopy and forward it with your order to the nearest Schneider Electric sales office. For interiors requiring vented enclosures, contact your nearest Schneider Electric sales office for assistance.

**NOTE:** Existing enclosure depth on flush installations must be measured from inside surface of enclosure to outer wall or plaster surface.

### Special Fronts

Existing enclosure the same depth as or deeper than our standard.

**NOTE:** Elevating brackets to be supplied by customer for existing enclosures deeper than our standard.

Existing enclosure shallower than our standard. Requires an enclosure extension (surface applications) or a formed front (flush applications). A hinged trim front option is not available for these applications.

**NOTE:** A formed front is available on NQ (225 A max.) and, NF (250 A max.). When a flush front is required for an existing enclosure that is shallower than our standard, be sure to indicate the position of the enclosure with respect to the wall in which it is mounted. This is required in order to determine whether an enclosure extension with a flat front should be supplied, or whether a flush formed front is more applicable. The interior must be centered in the enclosure and, if the enclosure is deeper than our standard, the interior must be leveled within the enclosure. The existing enclosure for NQ and, NF panels cannot be more than 3.0 inches shorter than the standard enclosure. Minimum width is 17 inches. Special trims that are manufactured to fit an existing enclosure will be within ± 0.25 inches of the specification. Refer to the table below for standard enclosure depths and for the maximum depth for which no special mounting brackets are required.

**Table 4.5: Panelboard Enclosure Depths**

Panelboard Type	Standard Enclosure Depth	Maximum Enclosure Depth for which No Special Mounting Brackets Required
NQ standard width—main lugs only	5.75 inches	5.75 inches
NQ standard width—main circuit breaker <sup>[9]</sup>	5.75 inches	5.75 inches
NF <sup>[9]</sup>	5.75 inches	5.75 inches
I-Line™—Maximum F, H or Q-frame branch circuit breaker	6.5 inches	7.25 inches
I-Line™—Maximum J-frame branch circuit breaker	8.25 inches	9.0 inches
I-Line™—Maximum P or R-frame branch circuit breaker	9.25 inches	10.25 inches

### Space Heater

**NOTE:** Enclosure, interior and trim ship fully assembled. 120 V is standard. Top feed applications only.

NQ and NF require 18 inches equipment space in NEMA 3R/12 constructions.

NQ and NF require 6 inch bottom end gutter in NEMA 1 construction.

Unwired (provisions for wiring to external source)

Wired (with overcurrent device, thermostat)

<sup>[8]</sup> Wireway supplied as a Commercial Reference has a WWxx part number, where xx is the length in inches.

<sup>[9]</sup> Panelboards with PowerPacT L main or sub-feed circuit breakers require 8.75 inch deep MHxxD9 enclosures, which are shipped with all required mounting brackets.



I-Line Door-in-Door Enclosure



Access to Circuit Breaker Handles



Access to Wiring Gutters

## Special Enclosures

### Type 1 Gasketed Enclosure (gasketing between front and enclosure)

20-inch maximum panel width

Over 20-inch panel width

**NOTE:** For 250 A and below enclosures only.

### Stainless Steel Enclosure (Type 3R, 4, 4X, 5 and 12; UL Listed)

**NOTE:** For #316 stainless steel, add 15% to the prices shown below.

NF and NQ for panelboard heights up to 86 inches

For panelboard heights up to 41 inches

For panelboard heights of 44–56 inches

For panelboard heights of 59–80 inches

I-Line™

HCM

HCP

**NOTE:** 304 stainless, standard

QMB <sup>[10]</sup>

### Fiberglass Enclosures (Type 4X, Non-Vented; UL Listed)

NF and NQ for panelboard heights up to 50 inches

28-inch height

33-inch, 40-inch and 50-inch height

I-Line and QMB

### Type 12 Door-In-Door Enclosures

**Table 4.6: Available Enclosures**

Interior Type	Enclosure Size		
	Height	Width	Depth
NQ <sup>[11]</sup>	56 inches	20 inches	6.5 inches
NF <sup>[12]</sup>	56 inches	20 inches	6.5 inches
I-Line (HCM)	91 inches	32 inches	11.5 inches
I-Line (HCP)	68 inches	42 inches	12.7 inches
I-Line (HCP)	86 inches	42 inches	12.7 inches

**Table 4.7: I-Line Door Kits**

Panel Type	Catalog No. <sup>[13]</sup>
HCN	HCN52D ( )
	HCN65D ( )
	HCN74D ( )
	HCN83D ( )
	HCN92D ( )
HCM	HCM48D ( )
	HCM64D ( )
	HCM73D ( )
	HCM91D ( )
HCP	HCW50D
	HCW59D
	HCW68D
	HCW86D
HCRU	HCW86D
HCN/HCM Latch Bracket	80104-908-50

- NOTE: HCRU door covers circuit breakers only, not entire box

<sup>[10]</sup> Not available for QMB interiors over 800 A.

<sup>[11]</sup> Not available for NQ interiors over 225 A.

<sup>[12]</sup> Not available for NF interiors over 250 A.

<sup>[13]</sup> Add "S" for surface or "F" for flush in place of the parentheses.



## NQ Panelboard with SPD

Table 4.8: OBSOLETE NQ SurgeLogic SurgeLoc Plug-on SPD (occupies 12-pole spaces) [1] [2]

Voltage	Surge Current Rating	Part Number
120 / 240 V	80 kA	SSP01BIA08PBQ1
	100 kA	SSP01BIA10PBQ1
	120 kA	SSP01BIA12PBQ1
	160 kA	SSP01BIA16PBQ1
	200 kA	SSP01BIA20PBQ1
	240 kA	SSP01BIA24PBQ1
208 Y / 120 V	80 kA	SSP02BIA08PBQ1
	100 kA	SSP02BIA10PBQ1
	120 kA	SSP02BIA12PBQ1
	160 kA	SSP02BIA16PBQ1
	200 kA	SSP02BIA20PBQ1
	240 kA	SSP02BIA24PBQ1
240 / 120 High Leg Delta	80 kA	SSP03BIA08PBQ1
	100 kA	SSP03BIA10PBQ1
	120 kA	SSP03BIA12PBQ1
	160 kA	SSP03BIA16PBQ1
	200 kA	SSP03BIA20PBQ1
	240 kA	SSP03BIA24PBQ1

## NF Merchandised Interiors with SPD - 480Y/277 Vac

**NOTE:** For selecting SurgeLoc SPD for RTI NQ Panelboard application, please refer to Section 9 of the Digest.

Table 4.9: NF Merchandised Interiors with SPD—Use I-Line Panelboards on 480 V 3Ø3W Delta Applications

Mains Rating	Max. Breaker Spaces	SPD Ratings		Interior	Components for adding Vertical Main Circuit Breaker	
		Voltage	Surge Rating	Catalog No.	MCB Kit	Main Circuit Breaker Frame
					Catalog No.	Select the appropriate MCB and price from the tables starting on Digest page 7-22
250 A	42	480Y/ 277 3P4W	120	NF442L2TVS412	N250MJ	PowerPacT J
			160	NF442L2TVS412C		
250 A	42			NF442L2TVS416		
				NF442L2TVS416C		PowerPacT J
400 A	42	480Y/ 277 3P4W	120	NF442L4TVS412	N400M	LAL/LHL (PowerPacT L F/A only)
				NF442L4TVS412C		
400 A	42		160	NF442L4TVS416		
				NF442L4TVS416C		

**NOTE:** Dry contacts standard.

**NOTE:** Dry contacts standard.

[1] When selecting a panelboard with SurgeLoc SPD, an additional 12 circuit positions (6 adjacent mounting spaces per side) are occupied. For example, if the desired number of circuits is 30, refer to "NQ Main Lug Interiors" and "NQ Main Circuit Breaker Interiors" in Digest section 9 to select the NQ442L2/NQ442L2C interior and corresponding Box and Trim.

[2] 96 space interiors are available factory assembled when SurgeLoc SPDs are to be installed in 84 circuit NQ panelboards.



## Copper Equipment Ground Bars

Copper equivalents of our aluminum PK–GTA equipment ground bars are available. These copper ground bars accept #14–4 Cu only.

**Table 4.10: Copper Ground Bars for NF Panelboards (see the Digest, Section 9 for NQ copper ground bar kits)**

Maximum Interior Circuit Count	Maximum Ampere Rating	Catalog No.
18	250	8010302651
30	250	8010302652
54	250	8010302653
84	400/600/800	PK27GTACU

## NF and NQ Panelboard Replacement Part Kits

**Table 4.11: TBPANEL NF and NQ Spare PartsTackle Box Replacement Kits**

Catalog Number	Description	Contents	Qty
NF102OETB	NF Number Strips TB Replacement Kit	NF102OE Circuit Strips	10
NQ102OETB	NQ Number Strips TB Replacement Kit	NQ102OE Circuit Strips	10
PANELDCTB	Directory Card & Pouch Replacement Kit	Directory Cards with Pouches	10
PAN-ELDCWMD54TB	Directory Card WMD # 1 TB Replacement Kit	Directory Cards #1 WMD	10
PAN-ELDCWMD96TB	Directory Card WMD # 2 TB Replacement Kit	Directory Cards #2 WMD	10
PANELDGTB	Danger Label TB Replacement Kit	Danger Labels	10
PANELLSTB	Label Sheet TB Replacement Kit	Label Sheets	10
PANELMBTB	Main Breaker Label TB Replacement Kit	MB Labels	10
PANELSMCTB	Seismic Label TB Replacement Kit	Seismic Labels	10
PANELWGTB	Warning Label TB Replacement Kit	Warning Labels	10
PANELKSTB	Kit Screw TB Replacement Kit	10-32 x 5/8" Kit Screws	50
PANELKEYTB	NSR251 Key TB Replacement Kit	NSR251 Keys	25
PANEL-TRIMSCBTB	Trim Screw Mono-Flat TB Replacement Kit	10-32 x 19/32" Trim Front Screws	30
PANEL-TRIMHSCBTB	Trim Screw Hinged TB Replacement Kit	1/4"-20 x 1" Trim Front Screws	30
PANEL-TRIMHTNTB	Tinnerman Clips TB Replacement Kit	1/4"-20 Spring Nut Clips	30
NQFP15	NQ Filler Plate Kit (15 per Pkg)	NQ Filler Plates	15
NFELVTB	NF Elevating Nut TB Replacement Kit	NF Elevating Nuts	25
PANELDFSCBTB	Deadfront Screw TB Replacement Kit	10-32 x 7/16" Deadfront Screws	50
PANELBOX-NUTTB	Enclosure Nut TB Replacement Kit	Enclosure Nuts	30
NQELVTB	NQ Elevating Screw TB Replacement Kit	NQ Elevating Screws	50
NFFP15	NF Filler Plate Kit (15 per Pkg)	NF Filler Plates	15

**Table 4.12: NQ and NF Replacement Deadfront Kits**

NQ and NF Replacement Deadfront Kits	Commercial Reference
NQ and NF Replacement Deadfront Cover 1.65" Long	NQNFRLP05601
NQ and NF Replacement Deadfront Cover 4.59" Long	NQNFRLP05602
NQ and NF Replacement Deadfront Cover 7.58" Long	NQNFRLP05603
NQ and NF Replacement Deadfront 7.58" Long w/ Label	NQNFRLP05603L
NQ and NF Replacement Deadfront Cover 10.59" Long	NQNFRLP05604
NQ and NF Replacement Deadfront 10.59" Long w/ Label	NQNFRLP05604L
NQ and NF Replacement Deadfront Cover 12.08" Long	NQNFRLP05605
NQ and NF Replacement Deadfront 12.08" Long w/ Label	NQNFRLP05605L
NQ and NF Replacement Deadfront Cover 13.58" Long	NQNFRLP05606
NQ and NF Replacement Deadfront 13.58" Long w/ Label	NQNFRLP05606L
NQ and NF Replacement Deadfront Cover 19.58" Long	NQNFRLP05607
NQ and NF Replacement Deadfront 19.58" Long w/ Label	NQNFRLP05607L
NQ and NF Replacement Deadfront Cover 25.58" Long	NQNFRLP05608
NQ and NF Replacement Deadfront 25.58" Long w/ Label	NQNFRLP05608L
NQ and NF Replacement Deadfront Cover 30.08" Long	NQNFRLP05609
NQ and NF Replacement Deadfront 30.08" Long w/ Label	NQNFRLP05609L
NQ and NF Replacement Deadfront Cover 31.58" Long	NQNFRLP05610
NQ and NF Replacement Deadfront 31.58" Long w/ Label	NQNFRLP05610L
NQ and NF Replacement Deadfront Cover 8.53" Long	NQNFRLP08902
NQ and NF Replacement Deadfront 8.53" Long w/ Label	NQNFRLP08902L
NQ and NF Replacement Deadfront Cover 12.05" Long FTL	NQNFRLP08903
NQ and NF Replacement Deadfront 12.05" Long FTL w/ Label	NQNFRLP08903L
NQ and NF Replacement Deadfront Cover 12.05" Long	NQNFRLP08906
NQ and NF Replacement Deadfront 12.05" Long w/ Label	NQNFRLP08906L
NQ and NF Replacement Deadfront Cover 14.53" Long	NQNFRLP08909
NQ and NF Replacement Deadfront 14.53" Long w/ Label	NQNFRLP08909L
NQ and NF Replacement Deadfront Cover 18.05" Long	NQNFRLP08910
NQ and NF Replacement Deadfront 18.05" Long w/ Label	NQNFRLP08910L
NQ and NF Replacement Deadfront Cover 18.05" Long	NQNFRLP08912
NQ and NF Replacement Deadfront 18.05" Long w/ Label	NQNFRLP08912L
NQ and NF Replacement Deadfront Cover 3.05" Long	NQNFRLP33001
NQ and NF Replacement Deadfront Cover 6.08" Long	NQNFRLP33002
NQ and NF Replacement Deadfront 6.08" Long w/ Label	NQNFRLP33002L
NQ and NF Replacement Deadfront Cover 9.05" Long	NQNFRLP33003
NQ and NF Replacement Deadfront 9.05" Long w/ Label	NQNFRLP33003L

Table 4.12 NQ and NF Replacement Deadfront Kits (cont'd.)

NQ and NF Replacement Deadfront Kits	Commercial Reference
NQ and NF Replacement Deadfront Cover 18.05" Long	NQNFRL33004
NQ and NF Replacement Deadfront 18.05" Long w/ Label	NQNFRL33004L
NQ and NF Replacement Deadfront Cover 24.05" Long	NQNFRL33005
NQ and NF Replacement Deadfront 24.05" Long w/ Label	NQNFRL33005L
NQ and NF Replacement Deadfront End	NQNFRL33301
NQ and NF ASCO Contactor Replacement Cover Kit	NQNFRLCASCO

Table 4.13: NQ and NF Replacement Lug Kits

NQ and NF Replacement Lug Kits	Commercial Reference
NQ and NF 400 A / 600 A Al Neutral Replacement Mech Lug	NQNFRLALMN46
NQ and NF 100 A / 125 A Al Replacement Mechanical Lug	NQNFRLALM1
NQ and NF 100 A / 125 A Al Dual Replacement Mechanical Lug	NQNFRLALM1D
NQ and NF 225 A / 250 A Al Replacement Mechanical Lug	NQNFRLALM2
NQ and NF 400 A Al Replacement Mechanical Lug	NQNFRLALM4
NQ and NF 600 A Al Replacement Mechanical Lug	NQNFRLALM6
NQ and NF 400 A / 600 A Al Replacement Crimp Lug	NQNFRLALVN46
NQ and NF 400 A / 600 A Al Replacement Crimp Lug w/ Label	NQNFRLALV46
NQ and NF 400 A / 600 A Cu Replacement Mech Lug	NQNFRLCUM46
NQ and NF 100 A / 125 A Cu Replacement Mech Lug	NQNFRLCUM1
NQ and NF 225 A / 250 A Cu Replacement Mech Lug	NQNFRLCUM2
NQ and NF 400 A Cu Replacement Mech Lug	NQNFRLCUM4
NQ and NF 600 A Cu Replacement Mech Lug	NQNFRLCUM6
NQ and NF 400 A / 600 A Cu Replacement Crimp Lug	NQNFRLCUVN46
NQ and NF 100 A / 125 A Cu Replacement Crimp Lug	NQNFRLCUV
NQ and NF 400 A Al Neutral Exp Mechanical Lug	NQRPLSFBALN

Table 4.14: NQ and NF Replacement Parts

NQ and NF Replacement Parts	Commercial Reference
ANSI 49 Gray Touch-up Paint (Aerosol)	PK49SP

Table 4.15: NQ Replacement Parts Kits

NQ Replacement Parts Kits	Commercial Reference
NQ 600 A Al ACC Replacement Mech Lug	NQRPLALM6A
NQ 100 A Al Replacement Crimp Lug	NQRPLALV1
NQ 225 A Al Replacement Crimp Lug	NQRPLALV2
NQ (KI) 225 A Main Breaker Replacement Deadfront	NQRPLMB2KI
NQ (H, J) 100 A / 225 A Main Breaker Replacement Deadfront	NQRPLMB2HJ
NQ (Q) 225 A Main Breaker Replacement Deadfront	NQRPLMB2Q
NQ (LA/LH) 400 A Main Breaker Replacement Deadfront	NQRPLMB4LA
NQ (LC) 400 A / 600 A Main Breaker Replacement Deadfront	NQRPLMB6LC
NQ (PPL) 400 A / 600 A Main Breaker Replacement Deadfront	NQRPLMB6PPL
NQ (PPL) NEMA 3R 400 A / 600 A Main Breaker Replacement Deadfront	NQRPLMB63PPL
NQ Low Amp Cover Kit	NQRPLML2
NQ High Amp Cover Kit	NQRPLML6
NQ SFB (H,J) 225A Replacement Deadfront	NQRPLSFB2HJ
NQ SFB (Q) 225A Replacement Deadfront	NQRPLSFB2Q
NQ SFB (LA/LH) Replacement Deadfront	NQRPLSFB4LA
NQ Dual PP-Q SFB Replacement Deadfront	NQRPLSFB4Q
NQ SFB (H,J) 400 A / 600 A Replacement Deadfront	NQRPLSFB6HJ
NQ SFB (Q) 400 A / 600 A Replacement Deadfront	NQRPLSFB6Q
NQ Column Width MB Branch Repl Deadfront Kit	NQRPL20MB100CW
NQ Column Width MB Branch Repl Deadfront Kit	NQRPL30MB100CW
NQ Column Width Branch 100 A Repl Deadfront Kit	NQRPL30ML100CW
NQ Column Width Branch 225 A Repl Deadfront Kit	NQRPL30ML225CW
NQ Column Width MB Branch 225 A Repl Deadfront Kit	NQRPL42MB225CW
NQ Column Width Branch 225 A Repl Deadfront Kit	NQRPL42ML225CW
NQ Branch Repl Deadfront Kit 100 A 18 Circuits 1 Phase	NQRPL18L1
NQ Branch Repl Deadfront Kit 100 A 30 Circuits 1 Phase	NQRPL30L1
NQ Branch Repl Deadfront Kit 225 A 30 Circuits 1 Phase	NQRPL30L2
NQ Branch Repl Deadfront Kit 225 A 30 Circuits MB 1 Ph	NQRPL30L2M250
NQ Branch Repl Deadfront Kit 225 A 30 Circuits MB 3 Ph	NQRPL430L2M250
NQ MB Branch Repl Deadfront Kit 250 A 1 Ph	NQRPL30M250
NQ MB Branch Repl Deadfront Kit 250 A 3 Ph	NQRPL430M250
NQ Branch Repl Deadfront Kit 400 A 30 Circuits 1 Phase	NQRPL30L4
NQ Branch Repl Deadfront Kit 600 A 30 Circuits 1 Phase	NQRPL30L6
NQ LC MB Branch Repl Deadfront Kit 1 Ph	NQRPL30MB6LC
NQ LC MB Branch Repl Deadfront Kit 3 Ph	NQRPL430MB6LC
NQ Branch Repl Deadfront Kit 225 A 42 Circuits 1 Phase	NQRPL42L2
NQ Branch Repl Deadfront Kit 225 A 42 Circuits MB 1 Ph	NQRPL42L2M250
NQ Branch Repl Deadfront Kit 225 A 42 Circuits MB 3 Ph	NQRPL442L2M250
NQ MB Branch Repl Deadfront Kit 250 A 1 Ph	NQRPL42M250
NQ MB Branch Repl Deadfront Kit 250 A 3 Ph	NQRPL442M250
NQ Branch Repl Deadfront Kit 400 A 42 Circuits 1 Phase	NQRPL42L4
NQ Branch Repl Deadfront Kit 600 A 42 Circuits 1 Phase	NQRPL42L6
NQ LC MB Branch Repl Deadfront Kit 1 Ph	NQRPL42MB6LC
NQ LC MB Branch Repl Deadfront Kit 3 Ph	NQRPL442MB6LC
NQ Branch Repl Deadfront Kit 225 A 54 Circuits 1 Phase	NQRPL54L2
NQ Branch Repl Deadfront Kit 400 A 54 Circuits 1 Phase	NQRPL54L4

**Table 4.15 NQ Replacement Parts Kits (cont'd.)**

NQ Replacement Parts Kits	Commercial Reference
NQ Branch Repl Deadfront Kit 600 A 54 Circuits 1 Phase	NQRPL54L6
NQ MB Branch Repl Deadfront Kit 250 A 1 Ph	NQRPL54M250
NQ LC MB Branch Repl Deadfront Kit 1 Ph	NQRPL54MB6LC
NQ Branch Repl Deadfront Kit 225 A 72 Circuits 1 Phase	NQRPL72L2
NQ Branch Repl Deadfront Kit 400 A 72 Circuits 1 Phase	NQRPL72L4
NQ Branch Repl Deadfront Kit 600 A 72 Circuits 1 Phase	NQRPL72L6
NQ MB Branch Repl Deadfront Kit 250 A 1 Ph	NQRPL72M250
NQ LC MB Branch Repl Deadfront Kit 1 Ph	NQRPL72MB6LC
NQ Branch Repl Deadfront Kit 225 A 84 Circuits 1 Phase	NQRPL84L2
NQ Branch Repl Deadfront Kit 400 A 84 Circuits 1 Phase	NQRPL84L4
NQ Branch Repl Deadfront Kit 600 A 84 Circuits 1 Phase	NQRPL84L6
NQ MB Branch Repl Deadfront Kit 250 A 1 Ph	NQRPL84M250
NQ LC MB Branch Repl Deadfront Kit 1 Ph	NQRPL84MB6LC
NQ Branch Repl Deadfront Kit 100 A 18 Circuits 3 Phase	NQRPL418L1
NQ Branch Repl Deadfront Kit 100 A 30 Circuits 3 Phase	NQRPL430L1
NQ Branch Repl Deadfront Kit 225 A 30 Circuits 3 Phase	NQRPL430L2
NQ Branch Repl Deadfront Kit 400 A 30 Circuits 3 Phase	NQRPL430L4
NQ Branch Repl Deadfront Kit 600 A 30 Circuits 3 Phase	NQRPL430L6
NQ Branch Repl Deadfront Kit 225 A 42 Circuits 3 Phase	NQRPL442L2
NQ Branch Repl Deadfront Kit 400 A 42 Circuits 3 Phase	NQRPL442L4
NQ Branch Repl Deadfront Kit 600 A 42 Circuits 3 Phase	NQRPL442L6
NQ Branch Repl Deadfront Kit 225 A 54 Circuits 3 Phase	NQRPL454L2
NQ Branch Repl Deadfront Kit 400 A 54 Circuits 3 Phase	NQRPL454L4
NQ Branch Repl Deadfront Kit 600 A 54 Circuits 3 Phase	NQRPL454L6
NQ Branch Repl Deadfront Kit 225 A 54 Circuits MB 3 Ph	NQRPL454L2M250
NQ LC MB Branch Repl Deadfront Kit 3 Ph	NQRPL454MB6LC
NQ Branch Repl Deadfront Kit 225 A 72 Circuits 3 Phase	NQRPL472L2
NQ Branch Repl Deadfront Kit 400 A 72 Circuits 3 Phase	NQRPL472L4
NQ Branch Repl Deadfront Kit 600 A 72 Circuits 3 Phase	NQRPL472L6
NQ MB Branch Repl Deadfront Kit 250 A 3 Ph	NQRPL472M250
NQ Branch Repl Deadfront Kit 225 A 82 Circuits MB 3 Ph	NQRPL472L2M250
NQ LC MB Branch Repl Deadfront Kit 3 Ph	NQRPL472MB6LC
NQ Branch Repl Deadfront Kit 225 A 84 Circuits 3 Phase	NQRPL484L2
NQ Branch Repl Deadfront Kit 400 A 84 Circuits 3 Phase	NQRPL484L4
NQ Branch Repl Deadfront Kit 600 A 84 Circuits 3 Phase	NQRPL484L6
NQ MB Branch Repl Deadfront Kit 250 A 3 Ph	NQRPL484M250
NQ Branch Repl Deadfront Kit 225 A 84 Circuits MB 3 Ph	NQRPL484L2M250
NQ LC MB Branch Repl Deadfront Kit 3 Ph	NQRPL484MB6LC
NQ Bonding Strap 100 / 225 AMP	NQBOND12
NQ Bonding Strap 400 / 600 AMP	NQBOND46
NQ 400 A & 600 A Condo Riser Neutral Bonding Kit	NFNQCRBOND46

**Table 4.16: NF Replacement Parts Kits**

NF Replacement Parts Kits	Commercial Reference
NF 800 A AI Neutral Replacement Mech Lug	NFRPLALM8
NF AI Neutral Branch Lug Adder	NFRPLALNADD
NF 125 A AI Replacement Crimp Lug	NFRPLALV1
NF 250 A AI Replacement Crimp Lug	NFRPLALV2
NF 800 A Cu Neutral Replacement Mech Lug	NFRPLCUM8
NF Cu Neutral Branch Lug Adder	NFRPLCUNADD
NF (F) 125 A Main Breaker Replacement Deadfront	NFRPLMB1F
NF (H) 125 A Main Breaker Replacement Deadfront	NFRPLMB1H
NF (J) 250 A Main Breaker Replacement Deadfront	NFRPLMB2J
NF (KI) 250 A Main Breaker Replacement Deadfront	NFRPLMB2KI
NF (LA/LH) 400 A Main Breaker Replacement Deadfront	NFRPLMB4LA
NF (LC) 400 A / 600 A Main Breaker Replacement Deadfront	NFRPLMB6LC
NF PowerPacT L MB or SFB Deadfront Replacement Kit	NFRPLM6PPL
NF PowerPacT L NEMA 3R MB or SFB Deadfront Replacement Kit	NFRPLMB63PPL
NF PowerPacT M MB Deadfront Replacement Kit	NFRPLMB8PPM
NF PowerPacT P MB Deadfront Replacement Kit	NFRPLMB8PPP
NF 125 Amp Repl Cover Kit	NFRPLML1
NF 250 Amp Repl Cover Kit	NFRPLML2
NF 125/250/400/600 Amp Repl Cover Kit	NFRPLML6
NF SFB (H) 250A Replacement Deadfront	NFRPLSFB2H
NF SFB (J) 250A Replacement Deadfront	NFRPLSFB2J
NF SFB (H) 400A Replacement Deadfront	NFRPLSFB4H
NF SFB (J) 400A Replacement Deadfront	NFRPLSFB4J
NF SFB (LA/LH) Replacement Deadfront	NFRPLSFB4LA
NF SFB (LA & H) Replacement Deadfront	NFRPLSFB4LAH
NF SFB (LA & J) Replacement Deadfront	NFRPLSFB4LAJ
NF Column Width Branch 100 A Repl Deadfront Kit	NFRPL30L100CW
NF Column Width Branch 100 A Repl Deadfront Kit	NFRPL30M100CW
NF Column Width Branch 125 A Repl Deadfront Kit	NFRPL30L125CW
NF Column Width 30 Circuit MB Branch Repl Deadfront Kit	NFRPL30MBCW
NF Column Width Branch 100 A MB Repl Deadfront Kit	NFRPL42M100CW
NF Column Width Branch 150 A MB Repl Deadfront Kit	NFRPL42M150CW
NF Column Width Branch 225 A Repl Deadfront Kit	NFRPL42L225CW
NF Column Width Branch 225 A MB Repl Deadfront Kit	NFRPL42M225CW
NF Column Width 42 Circuit MB Branch Repl Deadfront Kit	NFRPL42MBCW

Table 4.16 NF Replacement Parts Kits (cont'd.)

NF Replacement Parts Kits		Commercial Reference
NF Branch Repl Deadfront Kit 125 A 18 Circuits 1 Phase		NFRPL18L1
NF Branch Repl Deadfront Kit 125 A 30 Circuits 1 Phase		NFRPL30L1
NF Branch Repl Deadfront Kit 125 A TFL 30 Circuits 1 Phase		NFRPL30L1TFL
NF Branch Repl Deadfront Kit 250 A 30 Circuits 1 Phase		NFRPL30L2
NF Branch Repl Deadfront Kit 250 A TFL 30 Circuits 1 Phase		NFRPL30L2TFL
NF Branch Repl Deadfront Kit 400 A 30 Circuits 1 Phase		NFRPL30L4
NF Branch Repl Deadfront Kit 400 A TFL 30 Circuits 1 Phase		NFRPL30L4TFL
NF Branch Repl Deadfront Kit 600 A 30 Circuits 1 Phase		NFRPL30L6
NF Branch Repl Deadfront Kit 600 A TFL 30 Circuits 1 Phase		NFRPL30L6TFL
NF Branch Repl Deadfront Kit 800 A 30 Circuits 1 Phase		NFRPL30L8
NF Branch Repl Deadfront Kit 800 A TFL 30 Circuits 1 Phase		NFRPL30L8TFL
NF Branch Repl Deadfront Kit 125 A 42 Circuits 1 Phase		NFRPL42L1
NF Branch Repl Deadfront Kit 125 A TFL 42 Circuits 1 Phase		NFRPL42L1TFL
NF Branch Repl Deadfront Kit 250 A 42 Circuits 1 Phase		NFRPL42L2
NF Branch Repl Deadfront Kit 250 A TFL 42 Circuits 1 Phase		NFRPL42L2TFL
NF Branch Repl Deadfront Kit 400 A 42 Circuits 1 Phase		NFRPL42L4
NF Branch Repl Deadfront Kit 400 A TFL 42 Circuits 1 Phase		NFRPL42L4TFL
NF Branch Repl Deadfront Kit 600 A 42 Circuits 1 Phase		NFRPL42L6
NF Branch Repl Deadfront Kit 600 A TFL 42 Circuits 1 Phase		NFRPL42L6TFL
NF Branch Repl Deadfront Kit 800 A 42 Circuits 1 Phase		NFRPL42L8
NF Branch Repl Deadfront Kit 800 A TFL 42 Circuits 1 Phase		NFRPL42L8TFL
NF Branch Repl Deadfront Kit 125 A 54 Circuits 1 Phase		NFRPL54L1
NF Branch Repl Deadfront Kit 125 A TFL 54 Circuits 1 Phase		NFRPL54L1TFL
NF Branch Repl Deadfront Kit 250 A 54 Circuits 1 Phase		NFRPL54L2
NF Branch Repl Deadfront Kit 250 A TFL 54 Circuits 1 Phase		NFRPL54L2TFL
NF Branch Repl Deadfront Kit 400 A 54 Circuits 1 Phase		NFRPL54L4
NF Branch Repl Deadfront Kit 400 A TFL 54 Circuits 1 Phase		NFRPL54L4TFL
NF Branch Repl Deadfront Kit 600 A 54 Circuits 1 Phase		NFRPL54L6
NF Branch Repl Deadfront Kit 600 A TFL 54 Circuits 1 Phase		NFRPL54L6TFL
NF Branch Repl Deadfront Kit 800 A 54 Circuits 1 Phase		NFRPL54L8
NF Branch Repl Deadfront Kit 800 A TFL 54 Circuits 1 Phase		NFRPL54L8TFL
NF Branch Repl Deadfront Kit 250 A 66 Circuits 1 Phase		NFRPL66L2
NF Branch Repl Deadfront Kit 250 A TFL 66 Circuits 1 Phase		NFRPL66L2TFL
NF Branch Repl Deadfront Kit 400 A 66 Circuits 1 Phase		NFRPL66L4
NF Branch Repl Deadfront Kit 400 A TFL 66 Circuits 1 Phase		NFRPL66L4TFL
NF Branch Repl Deadfront Kit 600 A 66 Circuits 1 Phase		NFRPL66L6
NF Branch Repl Deadfront Kit 600 A TFL 66 Circuits 1 Phase		NFRPL66L6TFL
NF Branch Repl Deadfront Kit 250 A 84 Circuits 1 Phase		NFRPL84L2
NF Branch Repl Deadfront Kit 400 A 84 Circuits 1 Phase		NFRPL84L4
NF Branch Repl Deadfront Kit 600 A 84 Circuits 1 Phase		NFRPL84L6
NF Branch Repl Deadfront Kit 125 A 12 Circuits 3 Phase		NFRPL412L1
NF Branch Repl Deadfront Kit 125 A 18 Circuits 3 Phase		NFRPL418L1
NF Branch Repl Deadfront Kit 125 A 30 Circuits 3 Phase		NFRPL430L1
NF Branch Repl Deadfront Kit 125 A TFL 30 Circuits 3 Phase		NFRPL430L1TFL
NF Branch Repl Deadfront Kit 250 A 30 Circuits 3 Phase		NFRPL430L2
NF Branch Repl Deadfront Kit 250 A TFL 30 Circuits 3 Phase		NFRPL430L2TFL
NF Branch Repl Deadfront Kit 400 A 30 Circuits 3 Phase		NFRPL430L4
NF Branch Repl Deadfront Kit 400 A TFL 30 Circuits 3 Phase		NFRPL430L4TFL
NF Branch Repl Deadfront Kit 600 A 30 Circuits 3 Phase		NFRPL430L6
NF Branch Repl Deadfront Kit 600 A TFL 30 Circuits 3 Phase		NFRPL430L6TFL
NF Branch Repl Deadfront Kit 800 A 30 Circuits 3 Phase		NFRPL430L8
NF Branch Repl Deadfront Kit 800 A TFL 30 Circuits 3 Phase		NFRPL430L8TFL
NF Branch Repl Deadfront Kit 125 A 42 Circuits 3 Phase		NFRPL442L1
NF Branch Repl Deadfront Kit 125 A TFL 42 Circuits 3 Phase		NFRPL442L1TFL
NF Branch Repl Deadfront Kit 250 A 42 Circuits 3 Phase		NFRPL442L2
NF Branch Repl Deadfront Kit 250 A TFL 42 Circuits 3 Phase		NFRPL442L2TFL
NF Branch Repl Deadfront Kit 400 A 42 Circuits 3 Phase		NFRPL442L4
NF Branch Repl Deadfront Kit 400 A TFL 42 Circuits 3 Phase		NFRPL442L4TFL
NF Branch Repl Deadfront Kit 600 A 42 Circuits 3 Phase		NFRPL442L6
NF Branch Repl Deadfront Kit 600 A TFL 42 Circuits 3 Phase		NFRPL442L6TFL
NF Branch Repl Deadfront Kit 800 A 42 Circuits 3 Phase		NFRPL442L8
NF Branch Repl Deadfront Kit 800 A TFL 42 Circuits 3 Phase		NFRPL442L8TFL
NF Branch Repl Deadfront Kit 125 A 54 Circuits 3 Phase		NFRPL454L1
NF Branch Repl Deadfront Kit 125 A TFL 54 Circuits 3 Phase		NFRPL454L1TFL
NF Branch Repl Deadfront Kit 250 A 54 Circuits 3 Phase		NFRPL454L2
NF Branch Repl Deadfront Kit 250 A TFL 54 Circuits 3 Phase		NFRPL454L2TFL
NF Branch Repl Deadfront Kit 400 A 54 Circuits 3 Phase		NFRPL454L4
NF Branch Repl Deadfront Kit 400 A TFL 54 Circuits 3 Phase		NFRPL454L4TFL
NF Branch Repl Deadfront Kit 600 A 54 Circuits 3 Phase		NFRPL454L6
NF Branch Repl Deadfront Kit 600 A TFL 54 Circuits 3 Phase		NFRPL454L6TFL
NF Branch Repl Deadfront Kit 800 A 54 Circuits 3 Phase		NFRPL454L8
NF Branch Repl Deadfront Kit 800 A TFL 54 Circuits 3 Phase		NFRPL454L8TFL
NF Branch Repl Deadfront Kit 250 A 66 Circuits 3 Phase		NFRPL466L2
NF Branch Repl Deadfront Kit 250 A TFL 66 Circuits 3 Phase		NFRPL466L2TFL
NF Branch Repl Deadfront Kit 400 A 66 Circuits 3 Phase		NFRPL466L4
NF Branch Repl Deadfront Kit 400 A TFL 66 Circuits 3 Phase		NFRPL466L4TFL
NF Branch Repl Deadfront Kit 600 A 66 Circuits 3 Phase		NFRPL466L6
NF Branch Repl Deadfront Kit 600 A TFL 66 Circuits 3 Phase		NFRPL466L6TFL
NF Branch Repl Deadfront Kit 250 A 84 Circuits 3 Phase		NFRPL484L2

**Table 4.16 NF Replacement Parts Kits (cont'd.)**

NF Replacement Parts Kits	Commercial Reference
NF Branch Repl Deadfront Kit 250 A TFL 84 Circuits 3 Phase	NFRPL484L2TFL
NF Branch Repl Deadfront Kit 400 A 84 Circuits 3 Phase	NFRPL484L4
NF Branch Repl Deadfront Kit 400 A TFL 84 Circuits 3 Phase	NFRPL484L4TFL
NF Branch Repl Deadfront Kit 600 A 84 Circuits 3 Phase	NFRPL484L6
NF Branch Repl Deadfront Kit 600 A TFL 84 Circuits 3 Phase	NFRPL484L6TFL
NF 125 A / 250 A Bonding Strap Kit	NFBOND12
NF 400 A / 600 A / 800 A Bonding Strap Kit	NFBOND468
NF Gutter Mounted Bonding Strap Kit	NFBONDGUTTER

## Type 1 Door-in-Door (Hinged) Trim Fronts

## Features

- Meets door-in-door specifications
- Provides continuous piano hinge
- Permits one-person maintenance

Catalog No.  
NC44SHR

Table 4.17: Interiors, Boxes and Fronts (PENDING OBSOLESCENCE)

Note: HCM pending obsolescence and replaced by HCJ

Total Circuit Breaker Mounting Space (In.)	Mains Ampere Rating	Front [1]		Box [2]		Box Height (In.)
		4 Piece Trim Without Door	Trim With Door[3]	Type 1	NEMA 3R/5/12 [4] (Includes Front)	
		Catalog Number	Catalog Number	Catalog Number	Catalog Number	
HCM Main Lugs Only 3-pole—Suitable for use as service equipment when provided with a main circuit breaker. [5]						
27	225 A	HCM48T( )	HCM48T( )D	HC3248B	HC3248WP	48
	400 A					
	600 A					
	800 A					
45	225 A	HCM64T( )	HCM64T( )D	HC3264B	HC3264WP	64
	400 A					
	600 A					
	800 A					
63	225 A	HCM73T( )	HCM73T( )D	HC3273B	HC3273WP	73
	400 A					
	600 A					
	800 A					
99	225 A	HCM91T( )	HCM91T( )D	HC3291B	HC3291WP	91
	400 A					
	600 A					
	800 A					
HCM Main Circuit Breaker [6] Includes 3-pole, vertically mounted main circuit breaker—Suitable for use as service equipment.						
27	400 A	HCM64T( )	HCM64T( )D	HC3264B	HC3264WP	64
36	225 A					
	600 A	HCM73T( )	HCM73T( )D	HC3273DB9[7]	Use HCP	—
	800 A					
45	400 A	HCM73T( )	HCM73T( )D	HC3273B	HC3273WP	73
54	225 A					
72	600 A	HCM91T( )	HCM91T( )D	HC3291DB9[7]	Use HCP	—
	800 A					
81	400 A	HCM91T( )	HCM91T( )D	HC3291B	HC3291WP	91

Table 4.18: Hinged Trim

I-Line Fronts	NQ and NF Fronts
Catalog No. [8]	Catalog No. [8]/[9]
HC2652T( )HR	NC26( )HR
HC2665T( )HR	NC32( )HR
HC2674T( )HR	NC38( )HR
HC2683T( )HR	NC44( )HR
HC2692T( )HR	NC50( )HR

[1] Add "F" for flush mount, "S" for surface mount for panelboards with bus rated 250A or less. Add "VS" for vented surface or "VF" for vented flush in place of the parentheses for panelboards with bus rated 400A or greater.

[2] For Type 1 applications, order interior, front, and box. For Type 3R/5/12 applications, order interior and box only. The front is included with the box.

[3] For Type 1 applications order interior, trim and box. For type 3R/5/12, order interior and box only.

[4] Remove drain screws for Type 3R rating.

[5] Suitable for use as service equipment if equipped with an integral main circuit breaker or when not more than six main disconnecting means are provided and the panelboard is not used as a lighting and appliance branch circuit panelboard. (Not applicable in Canada)

[6] Bottom feed standard.

[7] DB9 box is 9.5 inches deep.

[8] Add "S" for surface or "F" for flush in place of the parentheses.

[9] For welded metal directory, add "WMD" suffix to the end of the catalog number.

Table 4.18 Hinged Trim (cont'd.)

I-Line Fronts Catalog No. [10]	NQ and NF Fronts Catalog No. [10]/[11]
HC3248T( )HR	NC56( )HR
HC3264T( )HR	NC62( )HR
HC3273T( )HR	NC68( )HR
HC3291T( )HR	NC74( )HR
HC4250T( )HR	NC80( )HR
HC4259T( )HR	NC86( )HR
HC4268T( )HR	NC50V( )HR
HC4286T( )HR	NC56V( )HR
HC4486T( )HR	NC62V( )HR
—	NC68V( )HR
—	NC74V( )HR
—	NC80V( )HR
—	NC86V( )HR

## NF Merchandised and Factory Assembled Accessories

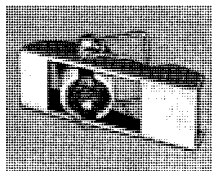
Table 4.19: NF Merchandised Interiors with Surge Protection Devices (SPD)

Available Pole Spaces	Main Rating	Main Circuit Breaker Adapter Kit	Main Circuit Breaker Frame	Interior Only Catalog No. [12]	Surge Current Rating	NEMA 1 Enclosure			NEMA 3R, 5, 12 Enclosure
						Box	Mono-Flat Front	Hinged Front	
42	250 A	Main Lug Only		NF442L2TVS416C	160 kA	MH56	NC56( )	NC56( )HR	MHWP56
		N250MJ [13]	JD/JG/JJ/JL			MH68	NC68( )	NC68( )HR	MHWP68
	400 A	Main Lug Only				MH68	NC68V( )	NC68V( )HR	MHWP68
		N400M [14]	LA/LH			MH80	NC80V( )	NC80V( )HR	MHWP80

## Trim Clamps and Screws

Table 4.20: Trim Clamps and Screws

Application	Catalog No.
NQOD Panelboards: Series E1 [1] 400 A and 600 A fronts NEHB Panelboards: Series E1 [1] 600 A fronts I-Line Panelboards: All Series E1 [1] fronts	LP9501
NQOD Panelboards: All Series E1 [1] vented fronts and hinged fronts manufactured after July 1994. NF Panelboards: All vented fronts and hinged fronts. NEHB Panelboards: All Series E1 [1] hinged fronts manufactured after July 1994. I-Line and QMB Panelboards: I-Line front with door manufactured after July 1994 but before August 1997; and I-Line hinged fronts and QMB front with door manufactured after July 1994.	LP9502 (includes 8 trim screws and captive hardware)
NQ and NQOD Panelboards: Screws for all fronts through 225 A. NF Panelboards: Screws for all fronts through 250 A. I-Line Panelboards: 4-piece trim and trim with door manufactured after July 1997. QMB Panelboards: Screws for 4-piece covers.	PANELTRIMSCTB (package of 30)
I-Line Panelboards: Panelboard deadfront screws for 4-piece trim manufactured after July 1994 but before August 1997.	8002506701



Catalog No  
LP9501

[10] Add "S" for surface or "F" for flush in place of the parentheses.  
[11] For welded metal directory, add "WMD" suffix to the end of the catalog number.  
[12] Order branch circuit breakers separately.  
[13] Select the appropriate PowerPacT main circuit breaker from Section 7.  
[14] Select an appropriate LA or LH Thermal-Magnetic Circuit Breaker from Section 7.  
[1] Panelboards that meet 1984 NEC® Wire Bending Space are Series E1.





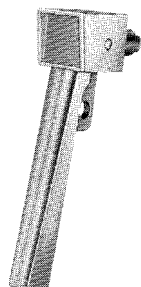
Catalog No. PK4FL and PD22FL



Catalog No. PK5FL



Catalog No. PK4NVL



Catalog No. 30007 11851

## Locks

Table 4.21: Locks—Type 1 Enclosures<sup>[2]</sup>

Application	Catalog No.
<b>NQOD, NQO, and NQOB Panelboards</b>	
All trim fronts on enclosures up to and including 50-inch high and 53-inch through 68-inch high vented trims	PK4FL (Before 01/06/97)
	PK22FL (After 01/06/97 NQ or NQOD only)
All trim fronts on enclosures 56 inches high or higher, excluding 53-inch through 68-inch high vented fronts	PK5FL (Before 11/01/99)
	PK22FL (After 11/01/99 NQOD only)
<b>NQ and NF Panelboards</b>	
Flush lock and key for all NC trim fronts <sup>[3]</sup> <sup>[4]</sup> (except panels using LC or LI main circuit breakers.)	PK22FL
Vault lock handle for trim fronts on enclosures 68 inches high or higher for panels using LC or LI main circuit breakers	PK5FL
<b>I-Line Panelboards</b>	
HCN: Series 1 and 2 fronts on enclosures up to 54 inches high	PK4FL
HCN: Series 1 and 2 fronts on enclosures 63 inches high or higher	PK5FL
HCM: Series 1 and 2 fronts on 38-inch high enclosures	PK4FL
HCM: Series 1 and 2 fronts on enclosures 47 inches high or higher	PK5FL
<b>I-Line Panelboards</b>	
HCW, HCWM: Series 1 and 2 fronts	PK4FL
HCN: Series E1 <sup>[2]</sup> fronts on enclosures up to and including 74-inches high	PK4FL (Before 11/14/97)
	PK22FL (After 11/14/97)
HCN: Series E1 <sup>[2]</sup> fronts on enclosures 83 inches high or higher	PK5FL (Before 04/05/02)
	PK22FL (After 04/05/02) <sup>[5]</sup>
HCM: Series E1 <sup>[2]</sup> fronts on enclosures 64 inches high or higher	PK5FL (Before 11/14/97)
	PK22FL (After 11/14/97) <sup>[5]</sup>
HCW, HCWM, HCWM-U, HCR-U: Series E1 <sup>[2]</sup> Front	PK5FL
<b>I-Line Panelboards (4-piece trim with door kit)</b>	
HCN: Series E1 <sup>[2]</sup> fronts on enclosures up to and including 74 inches high	PK22FL
HCN: Series E1 <sup>[2]</sup> fronts on enclosures 83 inches high or higher	PK5FL (Before 02/22/02)
	PK22FL (After 02/22/02) <sup>[5]</sup>
HCM: Series E1 <sup>[2]</sup> fronts on enclosures 73 inches high or higher	PK22FL
HCP, HCR-U: Series E1 <sup>[2]</sup> Front	PK5FL
HCP-SU: Series E1 <sup>[2]</sup> Front and HCP-SU Hinged Front	PK22FL <sup>[5]</sup>

- One NSR-251 key is included with each lock.

Table 4.22: Locks—Type 3R/12 Enclosures

Application	Catalog No.
NQOD, NQO, NQOB, NF all enclosures Series E1	PK4NVL
NQ, NQOD, NF Series E2	8011604350 (one handle)
	8011604350 (two handles)
I-Line and QMB Series E1	PK4NVL
I-Line and QMB Series E2	8012106350
I-Line—Handle for padlocking Series 1 and 2	3000711851
Stainless steel enclosures	HSEM3PLH

## Keys

Table 4.23: Replacement Keys

Application	Catalog No.
For use on all locks except those on stainless steel enclosures	PANELKEYTB (package of 25 keys)
Locks on stainless steel enclosures	8010645601



Catalog No.  
LP9618

Replacement Parts		
Catalog Number	Quantity Per Package	Description
QOFSBF12	12	NQ IP2X Bus Finger Filler <sup>[6]</sup>
QOFSALB12	12	NQ IP2X QO(B) Lug Cover Low Amp
QOFSHALB12	12	NQ IP2X QO(B) Lug Cover High Amp
HJQLLC	1	HJQ Main Breaker IP2X Line Lug Cover
LALLC	1	LA/LH Main Breaker IP2X Line Lug Cover
NQHJLSC	1	HJ Main Breaker IP2X Load Side Cover

<sup>[2]</sup> Panelboards that meet 1984 NEC® Wire Bending Space are Series E1.

<sup>[3]</sup> Fronts 56 inches or higher on 250 A maximum interior require two locks.

<sup>[4]</sup> Front 74 inches or higher on 600 A maximum interior require two locks.

<sup>[5]</sup> Fronts require two locks.

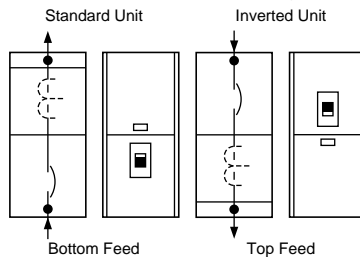
<sup>[6]</sup> Used only with Standard IP2X design.



Standard Unit

Inverted Unit

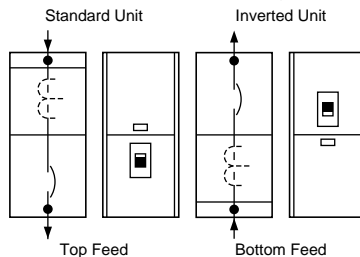
**Cold Sequence Metering**



Bottom Feed

Top Feed

**Hot Sequence Metering**



Top Feed

Bottom Feed

Replacement Parts		
NQQLSC	1	Q Main Breaker IP2x Load Side Cover
NQLALHLSC	1	LA/LH Main Breaker IP2X Load Side Cover
NQMLLSC	1	Main Lugs IP2X Cover
NQNCC	1	NQ IP2X Neutral Cover
QQ1PJ15	15	QOB Jaw Kit <sup>[7]</sup>

**Main Circuit Breaker and Current Transformer Compartment**  
**Service Entrance Equipment Hot or Cold Sequence Metering, Top or Bottom Feed, Indoor Construction at 600 Volts**

**General:** Suitable for use as service entrance equipment on AC systems. Listed by Underwriters' Laboratories.

**Service:** 1Ø3W, 3Ø3W, 3Ø4W, rated up to 600 Vac maximum.

**Metering:** <sup>[1]</sup> Current transformer compartment with provisions for installing bar type current transformers. For window type current transformers, order bus link kit from Table 4.24 Product Selection Table, page 4-17.

Standard unit is factory assembled for bottom feed cold sequence or top feed hot sequence metering applications. The unit is field convertible for bottom feed hot sequence or top feed cold sequence metering. Refer to instruction bulletin 80105-113-0x, *CTC Wall-Mounted Metering Equipment*, for field conversion details.

**Mains:** Main disconnects provided. 400-800 A: MJP. 1000-1200 A: PJP. Handle lock-off attachment provided for main circuit breaker as standard.

Refer to the Digest for field installable accessories.

**Enclosure:** Front accessible, totally enclosed, gray baked enamel finish. Available as indoor construction only. **Dimensions**—78 in. H x 26 in. W x 14.3 in. D.

- NOTE: Not EUSERC approved.

**Table 4.24: Product Selection Table<sup>[2]</sup>**

System	Service Voltage (AC)	Ampere Rating of Main	Catalog Number
1Ø3W, 3Ø3W, 3Ø4W	600 V Max.	400 A	CTC364CU
		600 A	CTC366CU
		800 A	CTC368CU
		1000 A	CTC3610CU
		1200 A	CTC3612CU
Bus link kit—used when installing window-type current transformers <a href="#">[3]</a>			SS4BLC

**Table 4.25: Lug Table**

Ampere Rating	Main Circuit Breaker Lug Wire Range <sup>[4]</sup>	Ground Lug
400 A	(3) 3/0–500 kcmil Al or Cu	#6 AWG–300 kcmil Al or Cu
600 A	(3) 3/0–500 kcmil Al or Cu	
800 A	(3) 3/0–500 kcmil Al or Cu	
1000 A	(4) 3/0–500 kcmil Al or Cu	
1200 A	(4) 3/0–500 kcmil Al or Cu	

**Data Sheet for Panelboards to Retrofit Existing Enclosures**

Distributor: \_\_\_\_\_  
Job Name: \_\_\_\_\_  
Contractor: \_\_\_\_\_  
Panel Marking: \_\_\_\_\_

<sup>[7]</sup> Used only with Enhanced IP2X design.

<sup>[1]</sup> Field conversion is the customer's responsibility, only the standard configuration is built by the factory.

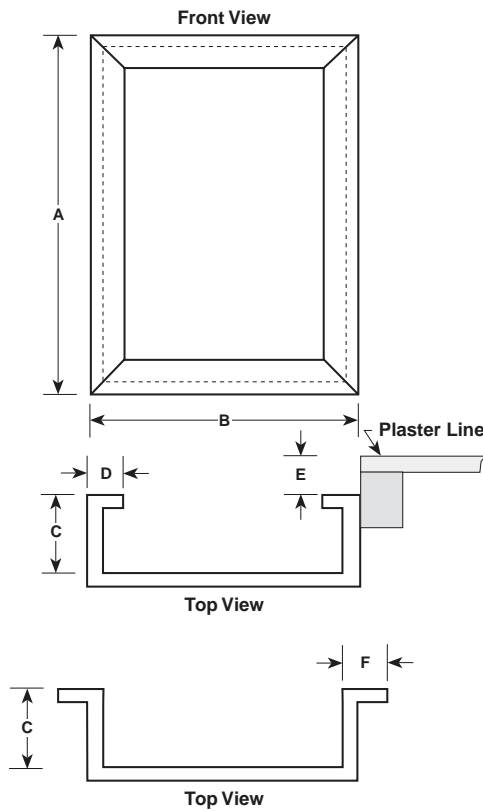
<sup>[2]</sup> Must specify feed (top or bottom) and sequence (hot or cold) at the time of order.

<sup>[3]</sup> Kits required per 3Ø application:

400–600 A—Order one kit

800–1200 A—Order two kits

<sup>[4]</sup> CT bus lugs and neutral lugs are identical to the main circuit breaker lugs.



The following dimensions are necessary for quotation and production of a panel to fit an existing enclosure. Provide dimensions in inches only.

#### Existing Flush-Mounted Enclosures

- Height dimension "A":
- Width dimension "B":
- Depth dimension "C":
- Flange width dimension "D":
- If enclosure is not flush with Plaster Line, dimension "E":

#### Existing Surface-Mounted Enclosures

- Height dimension "A":
- Width dimension "B":
- Depth dimension "C":
- Flange dimension may be either dimension "D" or "F" (select one)
  - Dimension "D":
  - Dimension "F": NOTE: Trims are furnished so that the interior must be centered within the enclosure.

If the enclosure is deeper than the standard panelboard enclosure for the required type of panelboard, *customer-supplied mounting brackets may be necessary to bring the interior out to the front of the enclosure.*

If interior requires a vented enclosure, contact your nearest Schneider Electric sales office for assistance.