

FEATURES & SPECIFICATIONS

INTENDED USE — For pendant-mounting the Extreme® LV all-conditions exit sign, both standard or EL option for wet location applications. Not recommended for areas prone to vandalism.

INSTALLATION — Mounts to 3/4" rigid conduit and 3/4-14/UNC nipple connector (required). Only available for top mount installation.

Exit sign must be ordered with the UM (Universal mount option).

WARRANTY — Limited warranty. Complete warranty terms located at:
www.acuitybrands.com/CustomerResources/Terms_and_conditions.aspx

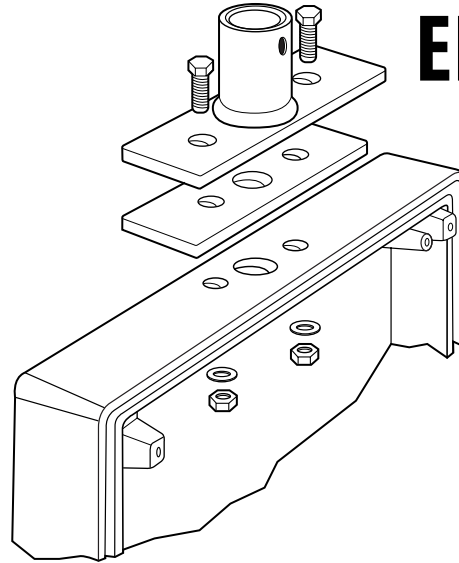
Note: Actual performance may differ as a result of end-user environment and application. Specifications subject to change without notice.

Catalog Number
Notes
Type

EXTREME®

LV Exit Sign Accessory

ELA VSA

STEM/CONDUIT
MOUNTING KIT


ORDERING INFORMATION

Lead times will vary depending on options selected. Consult with your sales representative.

Example: ELA VSA 1B

Catalog Number ¹	
ELA VSA 1B	Stem/conduit mounting accessory for Extreme single face with black mounting
ELA VSA 1W	Stem/conduit mounting accessory for Extreme single face with white mounting
ELA VSA 2B	Stem/conduit mounting accessory for Extreme double face with black mounting
ELA VSA2W	Stem/conduit mounting accessory for Extreme double face with white mounting

Notes

¹ Must specify housing color and number of faces.