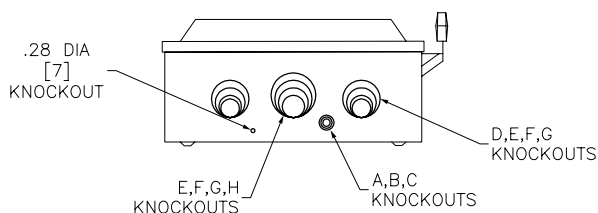


TERMINAL LUGS ‡			
AMPERES	MAX WIRE	MIN WIRE	TYPE
200	250 KCMIL	#6 AWG	AL OR CU

SYMBOL	CONDUIT SIZE	
	IN	MM
A	.50	13
B	.75	19
C	1.00	25
D	1.25	32
E	1.50	38
F	2.00	51
G	2.50	64
H	3.00	76



DUAL DIMENSIONS: INCHES
MILLIMETERS

CATALOG NUMBER	VOLTAGE RATINGS	WIRING DIAG	HORSEPOWER RATINGS			
			240VAC			
			STD		MAX	
			1Ø	3Ø	1Ø	3Ø
D224N	240VAC	A	15	25&	-	60&
D324N	240VAC	B	15^	25#	-	60#
DU324■	240VAC	C	-	-	15^	60<

- NOTES:
 FINISH -- GRAY BAKED ENAMEL
 UL LISTED -- FILE E-2875
 ALL NEUTRALS -- INSULATED GROUNDABLE
 SUITABLE FOR USE AS SERVICE EQUIPMENT
 SHORT CIRCUIT CURRENT RATINGS:
 10,000 AMPERES WITH CLASS H OR K FUSES.
 100,000 AMPERES WITH CLASS R FUSES (HAVING CLASS R REJECTION KITS INSTALLED) OR WITH CLASS J FUSES.
 WHEN MOUNTING THESE SWITCHES, ALLOW 4.00 [102] MIN CLEARANCE BETWEEN ENCLOSURES FOR OPENING OF SIDE HINGED DOOR.
 ‡ LUGS SUITABLE FOR 75°C CONDUCTORS.
 & FOR CORNER GROUNDED DELTA, USE SWITCHING POLES FOR UNGROUNDED CONDUCTORS.
 # USE ANY TOW SWITCHING POLES.
 # IF CORNER GROUNDED DELTA, USE OUTER SWITCHING POLES FOR UNGROUNDED CONDUCTORS.
 < IF CORNER GROUNDED DELTA, INSTALL NEUTRAL AND USE OUTER SWITCHING POLES FOR UNGROUNDED CONDUCTORS.
 ■ REQUIRES FIELD INSTALLATION OF EQUIPMENT GROUNDING KIT PK0GTA-2 WHEN USED AS SERVICE EQUIPMENT.

GENERAL DUTY SAFETY SWITCHES
 VISIBLE BLADE TYPE
 200 AMPERE -- SERIES F1
 ENCLOSURE -- NEMA TYPE 1 GENERAL PURPOSE



DWG# 3228
 NO.