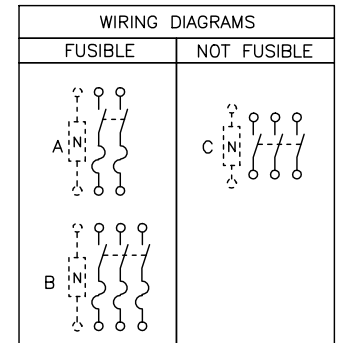


TANGENT KNOCKOUT  
(DIMENSION ON DRAWING TO CENTERLINE OF "A" KNOCKOUT)



TERMINAL LUGS			
AMPERES	MAX WIRE	MIN WIRE	TYPE
30	#6 AWG	#14 AWG	AL OR CU

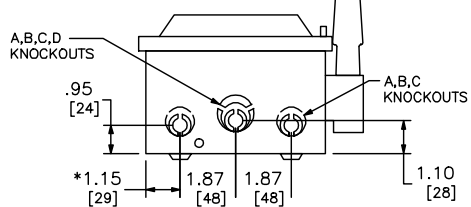
KNOCKOUTS				
SYMBOL	CONDUIT SIZE		DIAMETER	
	IN	MM	IN	MM
A	.50	13	.88	22
B	.75	19	1.13	29
C	1.00	25	1.38	35
D	1.25	32	1.75	44

NEMA TYPE 1

SEISMIC NOTES:  
USE (4) 1/4" DIA GRADE 5 STEEL MOUNTING BOLTS @ HOLES AA  
MAX CONFIGURED WEIGHT 10 LB FOR THE PURPOSE OF DETERMINING  
SEISMIC ANCHORAGE REQUIREMENTS. FOR ALL OTHER APPLICATIONS,  
CONTACT SQUARE D COMPANY.

\*DIMENSIONS TO BOX (NOT COVER)

DUAL DIMENSIONS: INCHES  
MILLIMETERS



CATALOG NUMBER	VOLTAGE RATINGS	AMPERAGE RATINGS	WIRING DIAG	HORSEPOWER RATINGS															
				240VAC				480VAC				600VAC				250 VDC	600 VDC		
				STD		MAX		STD		MAX		STD		MAX					
				1#	3#	1#	3#	1#	3#	1#	3#	1#	3#	1#	3#	STD	MAX		
H221N	240VAC,250VDC	30	A	1 1/2●	3‡	3●	7 1/2‡	-	-	-	-	-	-	-	-	5▲	-	-	
H321N	240VAC,250VDC	30	B	1 1/2▲	3‡	3▲	7 1/2‡	-	-	-	-	-	-	-	-	5▲	-	-	
H361	600VAC,600VDC	30	B	-	-	-	-	3▲	5■	7 1/2▲	15■	-	7 1/2	-	20	5▲	-	10▲ 15▲	
H361N	600VAC,600VDC	30	B	-	-	-	-	3▲	5‡	7 1/2▲	15‡	-	7 1/2	-	20	5▲	-	10▲ 15▲	
HU361	600VAC,600VDC	30	C	-	-	5▲	10■	-	-	7 1/2▲	20■	-	-	10▲	30	-	5▲	-	15▲
HU361EI	600VAC,600VDC	30	C	-	-	5▲	10■	-	-	7 1/2▲	20■	-	-	10▲	30	-	5▲	-	15▲

NOTES:  
UL LISTED - E2875  
FINISH - GRAY BAKED ENAMEL  
ALL NEUTRALS - INSULATED  
▲ USE BOTH OUTER SWITCHING POLES  
● USE BOTH SWITCHING POLES  
■ IF CORNER GROUNDED DELTA, INSTALL NEUTRAL AND USE OUTER SWITCHING POLES FOR UNGROUNDED CONDUCTORS.  
‡ FOR CORNER GROUNDED DELTA ONLY, USE OUTER SWITCHING POLES FOR UNGROUNDED CONDUCTORS.

HEAVY DUTY SAFETY SWITCHES - SEISMIC  
VISIBLE BLADE TYPE  
30 AMPERE  
ENCLOSURE - NEMA TYPE 1 GENERAL PURPOSE



DWG# 2228S  
NO.