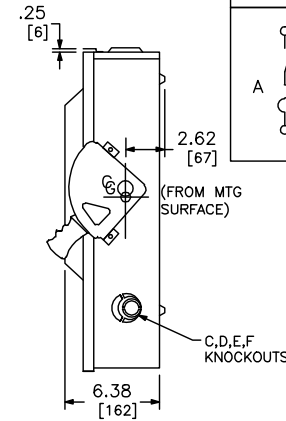
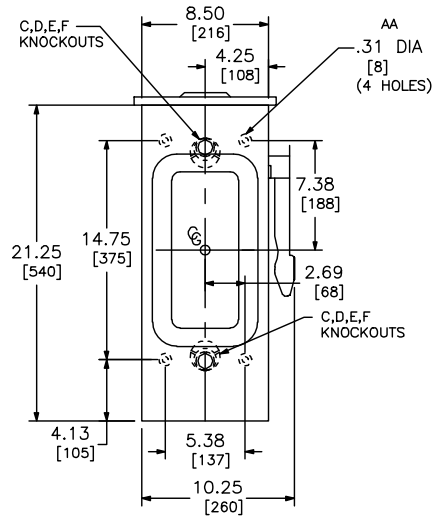
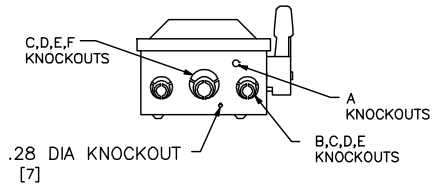
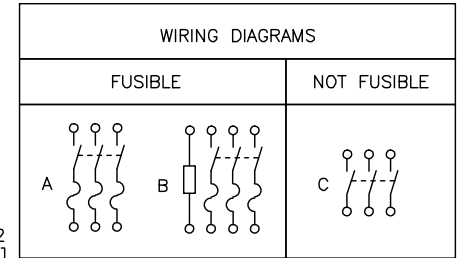


NEMA TYPE 1



NEMA TYPE 3R ▲



TERMINAL LUGS ‡			
AMPERES	MAX. WIRE	MIN. WIRE	TYPE
100	#1/0 AWG	#12 AWG	AL
	#1/0 AWG	#14 AWG	CU

KNOCKOUTS				
SYMBOL	CONDUIT SIZE		DIAMETER	
	IN	MM	IN	MM
A	.50	13	.88	22
B	.75	19	1.13	29
C	1.00	25	1.38	35
D	1.25	32	1.75	45
E	1.50	38	2.00	51
F	2.00	51	2.50	64

DUAL DIMENSIONS: INCHES
MILLIMETERS

SEISMIC NOTES:
USE (4) 1/4" DIA GRADE 5 STEEL MOUNTING BOLTS @ HOLES AA
MAX CONFIGURED WEIGHT 22 LB FOR THE PURPOSE OF DETERMINING
SEISMIC ANCHORAGE REQUIREMENTS. FOR ALL OTHER APPLICATIONS,
CONTACT SQUARE D COMPANY.

NOTES:
FINISH - GRAY BAKED ENAMEL
UL LISTED - FILE E-2875
ALL NEUTRALS - INSULATED GROUNDABLE
SUITABLE FOR USE AS SERVICE EQUIPMENT
SHORT CIRCUIT CURRENT RATINGS:

10,000 AMPERES WITH CLASS H OR K FUSES
200,000 AMPERES WITH CLASS R FUSES HAVING CLASS R REJECTION KITS OR CLASS J FUSES.
WHEN MOUNTING THESE SWITCHES, ALLOW 4.00/[102] MIN. CLEARANCE
BETWEEN ENCLOSURES FOR OPENING OF SIDE HINGED DOOR.

▲ NEMA TYPR 3R SWITCHES HAVE PROVISIONS FOR MAXIMUM 2.50/[64] BOLT-ON B-HUB.
‡ LUGS SUITABLE FOR 60°C OR 75°C COPPER OR ALUMINUM CONDUCTORS.

CATALOG NUMBER	VOLTAGE RATINGS	WIRING DIAG	HORSEPOWER RATINGS										
			250VAC			480VAC			600VAC			250 VDC	600 VDC
			STD	MAX	3Ø	1Ø	3Ø	1Ø	3Ø	1Ø	3Ø		
			3Ø	1Ø	3Ø	3Ø	1Ø	3Ø	3Ø	1Ø	3Ø	MAX	MAX
H323N	240VAC	B	15	-	30	-	-	-	-	-	-	-	-
H323NRB	240VAC	B	15	-	30	-	-	-	-	-	-	-	-
H363	600VAC;600VDC	A	-	-	-	25	-	60	30	-	75	20	40
H363RB	600VAC;600VDC	A	-	-	-	25	-	60	30	-	75	20	40
H363N	600VAC	B	-	-	-	25	-	60	30	-	75	-	-
H363NRB	600VAC	B	-	-	-	25	-	60	30	-	75	-	-
HU363	600VAC;600VDC	C	-	15	40	-	30	75	-	40	75	20	40
HU363RB	600VAC;600VDC	C	-	15	40	-	30	75	-	40	75	20	40

HEAVY DUTY SAFETY SWITCHES - SEISMIC
VISIBLE BLADE TYPE
100 AMPERE
ENCLOSURE - NEMA TYPE 1 GENERAL PURPOSE
NEMA TYPE 3R RAINPROOF



DWG# 1905S
NO.