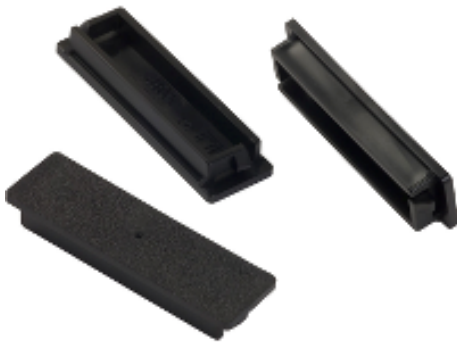


Product availability : Stock - Normally stocked in distribution facility



### Main

Range of product	QO
Product or component type	Load Center Filler Plate

### Ordering and shipping details

Category	00102 - QO LC ACCESSORIES
Discount Schedule	DE3A
GTIN	00785901518976
Nbr. of units in pkg.	5
Package weight(Lbs)	4.0000000000000001E-2
Returnability	Y
Country of origin	US

### Offer Sustainability

Sustainable offer status	Not Green Premium product
RoHS (date code: YYWW)	Compliant - since 1248 - Schneider Electric declaration of conformity <a href="#">Schneider Electric declaration of conformity</a>
REACH	Reference not containing SVHC above the threshold <a href="#">Reference not containing SVHC above the threshold</a>
Product end of life instructions	Need no specific recycling operations

### Contractual warranty

Warranty period	18 months
-----------------	-----------