



**Type MA Automatic Circuit Interrupter
Used in Classes 8538 and 8738 — Type SH, Size 6 —
3 Pole AC Combination Starters**

WARNING: Hazard of electrical shock or burn. Be sure to turn off power supplying this equipment before working on it.

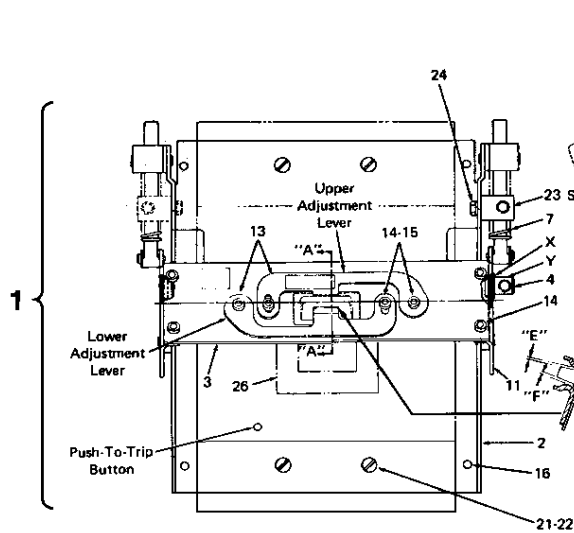


Figure 1

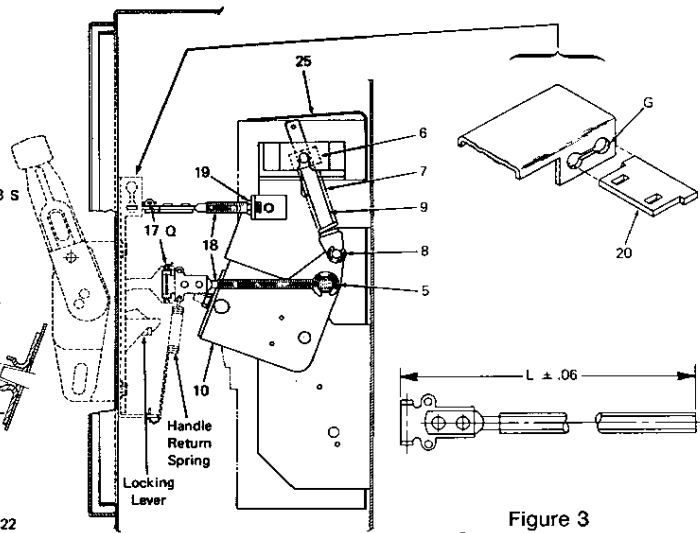
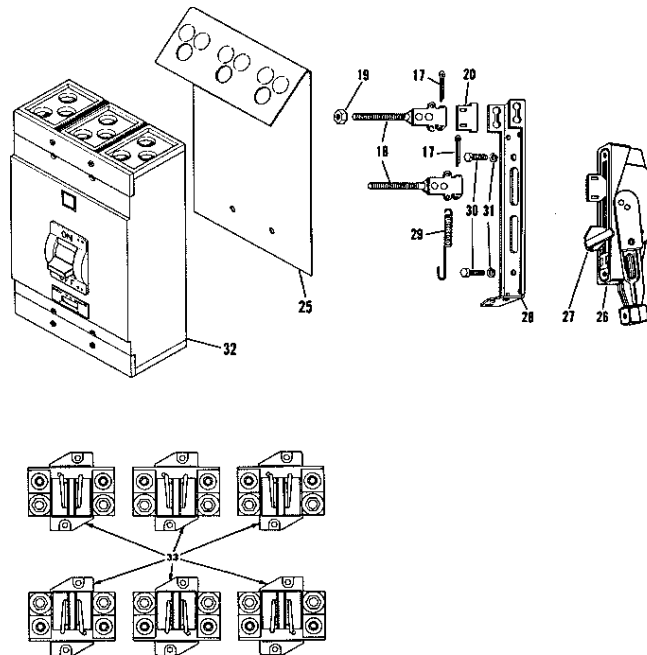


Figure 2

Figure 3
Operating Rod and
Stiffener Rod

REPLACEMENT PARTS LIST			
Item	Description	Part Number	Qty
1	Operating Mech. Sub-Assembly..... (Includes item 2 thru 25)	9422 RT1	1
2	Mfg. Frame Assembly.....	31004-308-50	1
3	Bail Arm Bar.....	31004-353-01	1
4	Drive Pin.....	31004-296-01	1
5	"E" Ring 3/8.....	29907-04010	1
6	Spring Seat.....	31004-241-01	2
7	Operating Spring.....	163955	2
8	"E" Ring 3/8.....	29909-02410	4
9	Spring Guide.....	31004-237-02	2
10	R. Side Bail Arm Side Plate.....	31004-355-50	1
11	L. Side Bail Arm Side Plate.....	31004-355-51	1
13	Adjustment Lever.....	31004-354-01	2
14	Screw 1/4-20 x 1/2.....	21601-20160	8
15	Washer 1/4.....	23601-00200	4
16	Screw Assembly 1/4-20 x 1/2.....	21916-20160	4
17	Cotter Pin 1/8 x 1 1/4.....	24201-08400	2
18	Rod Assembly.....	9422 R1	2
19	Nut 3/8-16.....	23002-00240	1
20	Stiffener Coupling.....	31055-168-01	1
21	Screw 3/16-18 x 4 1/2.....	21001-22831	4
22	Washer 3/16.....	23701-00220	4
23	Stiffener Bracket.....	31004-298-01	1
24	Screw Assembly 1/4-20 x 3/8.....	21926-20120	1
25	Line Terminal Cover.....	30002-032-04	1
26	Operating Handle Mechanism.....	9422 A1	1
27	Locking Lever.....	31008-467-01	1
28	Stiffener Bracket.....	31008-470-01	1
29	Handle Return Spring.....	30017-143-01	1
30	Hex Head Cap Screw 1/4-20 x 3/8.....	21401-20200	2
31	Lock Washer 1/4.....	23701-00200	2
32	Automatic Circuit Interrupter.....	MAL 360008M	1
33	Fuse Base and Clip Assembly..... Consists of Line and Load Side Fuse Bases, Clips, and Lugs.	30015-127-50	3
34*	Class R Fuse Clip Rejection Pin Kit.....	9999 SR5	1

* Not Shown



ORDERING INSTRUCTIONS — See Page 2



ADJUSTMENT AND REPAIR INFORMATION

WARNING: Hazard of electrical shock or burn. Be sure to turn off power supplying this equipment before working on it.

If the circuit interrupter, Item 32, the operating mechanism, Item 1, or certain parts of the operating mechanism are replaced, it may be necessary to readjust the operating mechanism to insure proper operation. Test for proper operation as follows:

1. Place the operating handle in ON position and push the insulated recessed Push-To-Trip button on the front of the circuit interrupter with a pencil or other small tool. This will cause the circuit interrupter to trip.
2. Attempt to reset the circuit interrupter by moving the operating handle to OFF position. When reset, circuit interrupter will turn ON and OFF with an audible snap.
3. If the circuit interrupter does not reset, place handle in ON position, decrease gap "E" by loosening screw assemblies in upper adjustment lever, reducing gap "E" (figure 1) and tightening screw assemblies to 70 inch pounds. Repeat as necessary until circuit interrupter can be turned ON and OFF, and reset with the operating handle.
4. It may be necessary to turn threaded operating rod out one or two turns and reconnect handle linkage with cotter pin at point Q (figure 2). This adjustment must be made with the operating handle and the circuit interrupter mechanism in ON position.

If a new operating rod or stiffner rod (item 18, Figures 2 & 3) is necessary, it should be cut to proper Length:

Operating Rod $L = D - 2\frac{3}{4}$ inches

Stiffner Rod $L = D - T - 4\frac{1}{4}$ inches

D = distance from handle mounting surface to circuit interrupter mounting surface.

T = Flange thickness of handle mounting surface.

ELECTRICAL INTERLOCK

A one or two pole electrical interlock mechanism may be added or replaced on these circuit interrupter operating mechanisms. The snap switch only may also be replaced on existing interlock installations. Catalog numbers are shown in Table below.

Electrical Interlock Type	Electrical Interlock Mechanism Complete		Replacement Snap Switch Only	
	Class	Type	Class	Type
Single Pole	9999	R-26	9007	A0-2
Double Pole	9999	R-27	9007	C0-3

ORDERING INFORMATION REQUIRED

1. Specify quantity, part number, and description of part.
2. Order circuit interrupter, Item 32, from Distribution Equipment Division.