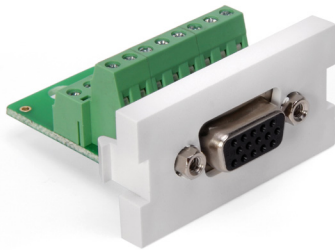


## VGA HD15 Video Screw-Terminal MOS Module

### APPLICATION

The Leviton VGA HD15 Screw-Terminal Multimedia Outlet System (MOS) Module is an analog connector for video signal transmission. The module snaps into MOS Wallplates and Surface-Mount Boxes.



### SPECIFICATION

The outlet connector modules shall be made of fire-retardant plastic. Modules must be capable of interchangeable mounting between various multimedia surface and flush-mount outlets. Inserts shall be capable of maintaining a minimum bend radius with the area of minimum NEMA box enclosures.

### FEATURES

- Compatible with single- and dual-gang MOS Wallplates and Surface-Mount Boxes
- Available in white and ivory colors

### DESIGN CONSIDERATIONS

- Used with video cables comprised of (3) coax (R,G,B), (4) UTP, (2) conductor lines for horizontal and vertical sync, and (1) draw
- Not for use with UTP cable
- Allow enough room for cable slack and tight bend radius
- Not for use in telcom circuits
- Front loading
- One unit high

### PHYSICAL SPECIFICATIONS

Dimensions: See page two

Housing Material: Fire-retardant plastic, rated UL 94V-0

### STANDARDS COMPLIANCE

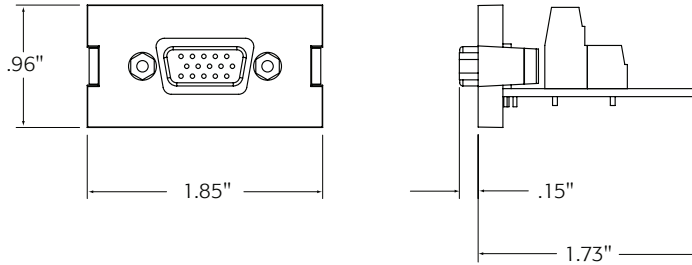
cULus Listed (UL1863, CAN/CSA-C22.2 NO. 182.4-M90)

### WARRANTY INFORMATION

One-year limited warranty. For a copy of Leviton product warranties, visit [www.leviton.com](http://www.leviton.com).

**ELECTRONIC FILES**

For CAD files, typical specs, or technical drawings (.DXF, .DWG), visit [www.leviton.com](http://www.leviton.com).



41295-HDX

**VGA Pinout Table**

PIN	Signal	Wire
1	Red	Coax CC
2	Green	Coax CC
3	Blue	Coax CC
4	ID BIT 2	TP 1
5	Ground	TP 1
6	Red Shield	Coax Shield
7	Green Shield	Coax Shield
8	Blue Shield	Coax Shield
9	DDV +5V	Cond 1
10	Sync Rtn	TP 3/4
11	ID BIT 0	TP 2
12	ID BIT 1	TP 2
13	Horz Sync	Cond 2
14	Ver Sync	TP 3
15	ID BIT 3	TP 4
16	Shell	Drain Wire

**PART NUMBERS**

Description	White	Ivory
VGA HD15 Video Screw Terminal MOS Module	41295-HDW	41295-HDI



**Leviton Network Solutions**  
2222 - 222nd St. SE  
Bothell, WA 98021-4416

**Asia / Pacific**  
T +1.631.812.6228  
E [infoasean@leviton.com](mailto:infoasean@leviton.com)

**Canada**  
T +1.514.954.1840  
E [pcservice@leviton.com](mailto:pcservice@leviton.com)

**Caribbean**  
T +1.954.593.1896  
E [infocaribbean@leviton.com](mailto:infocaribbean@leviton.com)

**China**  
T +852.2774.9876  
E [infochina@leviton.com](mailto:infochina@leviton.com)

**Colombia**  
T +57.1.743.6045  
E [infocolombia@leviton.com](mailto:infocolombia@leviton.com)

tel 1-800-824-3005  
tel +1-425-486-2222  
[appeng@leviton.com](mailto:appeng@leviton.com)  
[www.leviton.com](http://www.leviton.com)

**Europe**  
T +33.6.8869.1380  
E [infoeurope@leviton.com](mailto:infoeurope@leviton.com)

**India / SAARC**  
T +91.80.4322.5678  
E [infoindia@leviton.com](mailto:infoindia@leviton.com)

**Mexico**  
T +52.55.5082.1040  
E [lsamarketing@leviton.com](mailto:lsamarketing@leviton.com)

**Middle East & Africa**  
T +971.4.886.4722  
E [lmeinfo@leviton.com](mailto:lmeinfo@leviton.com)

**South Korea**  
T +82.2.3273.9963  
E [infokorea@leviton.com](mailto:infokorea@leviton.com)